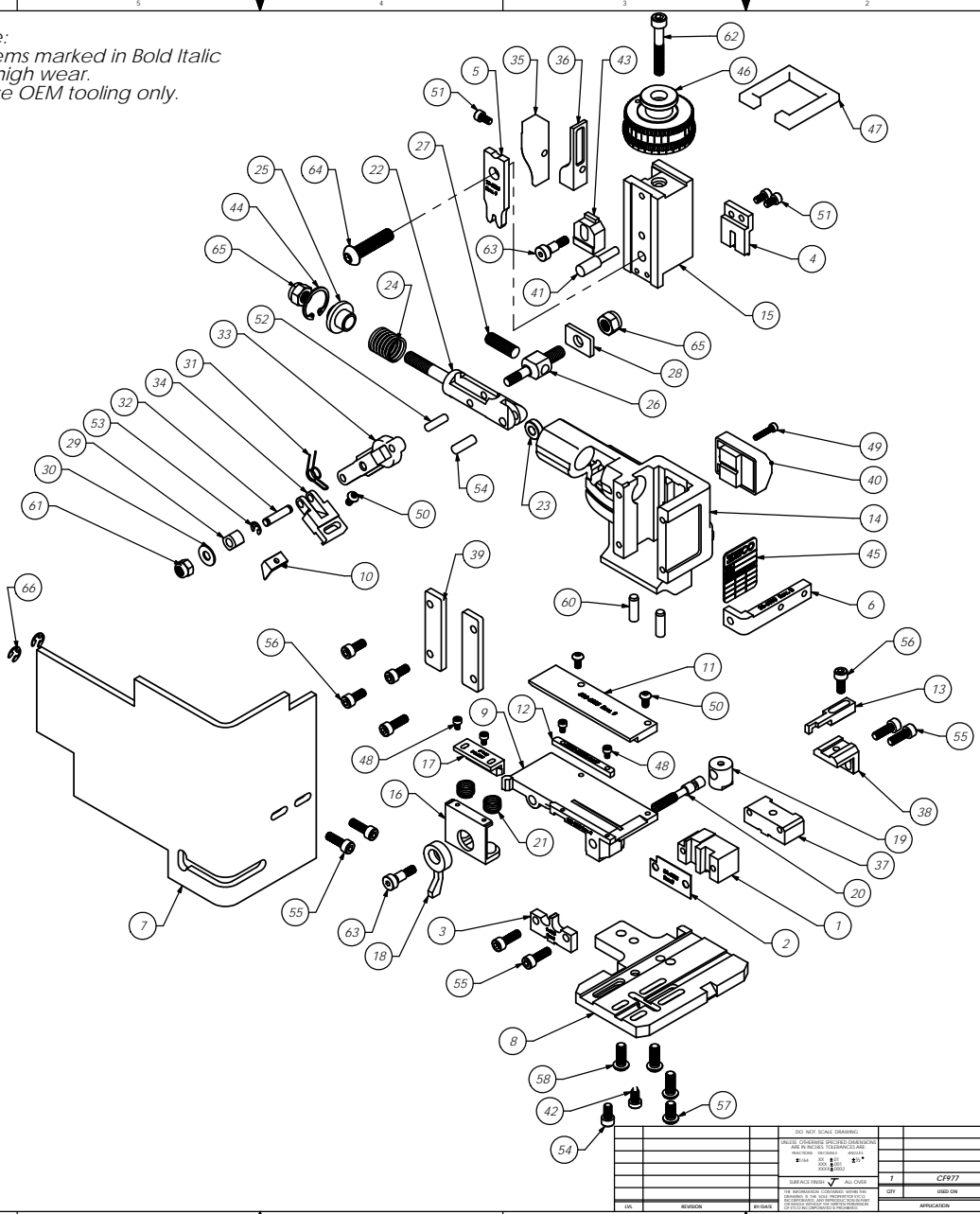


Parts List				
Item No.	Part Code	Part No.	Description	QTY.
1	<b>62589</b>	<b>8-6025</b>	<b>Cut-Off Die</b>	1
2	<b>62591</b>	<b>8A-6025</b>	<b>Scrap Retainer</b>	1
3	<b>62588</b>	<b>9-6025</b>	<b>Anvil</b>	1
4	<b>62593</b>	<b>12-6025</b>	<b>Cut-Off Punch</b>	1
5	<b>62592</b>	<b>13-6025</b>	<b>Wire Rolling Tool</b>	1
6	61626	26-6000	Guard Bracket	1
7	76403	199-3005	Safety Guard	1
8	62590	200-6025	Base Plate	1
9	62594	250-6025	Feed Plate	1
10	62596	303-6025	Feed Finger	1
11	62598	500-6025	Rear Guide	1
12	61663	1000-6003	Front Guide	1
13	62702	1600-6025	Stripper/Wire Stop	1
14	61542	MM1-S	Frame	1
15	61545	MM3-S	Plunger	1
16	61736	MM7-S-1	Brake	1
17	61738	MM7-S-2	Brake Shoe	1
18	61550	MM8-S	Brake Lever	1
19	61551	MM9-S	Adjustment Screw Retainer	1
20	61552	MM10-S	Adjustment Screw	1
21	61553	MM11-S	Brake Spring	2
22	61554	MM12	Adjustable Feed Piston	1
23	61555	MM13	Cam Roller	1
24	61556	MM14	Piston Spring	1
25	61557	MM15	Spring Plate	1
26	61558	MM16	Feed Adjustment Block	1
27	61559	MM17	Feed Adjustment Screw	1
28	61560	MM18	Retainer	1
29	61561	MM19	Guide Block	1
30	61562	MM20	Feed Washer	1
31	61563	MM21	Feed Finger Spring	1
32	61564	MM22	Feed Finger Shaft	1
33	61565	MM23	Feed Arm	1
34	61566	MM24	Feed Finger Retainer	1
35	61573	MM31	Post-feed Cam	1
36	61574	MM32	Pre-Feed Cam	1
37	61581	MM37-S	Tool Block	1
38	62703	MM38-S-1	Backup Block	1
39	61583	MM39	Gib	2
40	61585	MM43	Counter Ass'y.	1
41	61586	MM44	Locator Pin	1
42	61588	MM47	Dog Screw	1
43	61590	MM48	IRT Adjustment Block	1
44	61595	MM56	Retaining Ring	1
45	61598	MM59	ID Plate	1
46	61596	MM57	Continuous Regulation Head Assembly	1
47	61597	MM58	Protection Spacer	1
48	M3x0.5_5.0sh		M3 x 5mm Socket Hd Cap Screw	4
49	M3x0.5_16.0sh		M3 x 0.5 x 16mm Socket Hd Cap Screw	1
50	M4x_7_8.0bh		M4 x .7 x 8mm Button Hd Cap Screw	3
51	M4x0.7_8.0sh		M4 x .7 x 8.0 Socket Hd Cap Screw	3
52	M5_18.0dp		M5 x 18mm Dowel Pin	1
53	M5_M3_9err		M5 External Retaining Ring	2
54	M5x_8_10.0sh		M5 x .8 x 10mm Socket Hd Cap Screw	1
55	M5x_8_16.0sh		M5 x .8 x 16mm Socket Hd Cap Screw	7
56	M5x_8_12.0sh		M5 x .8 x 12mm Socket Hd Cap Screw	4
57	M6x1.0_12.0bh		M6 x 1.0 x 12mm Button Hd Cap Screw	1
58	M6x1.0_16.0bh		M6 x 1.0 x 16mm Button Hd Cap Screw	3
54	M6_18dp		M6 x 18mm Dowel Pin	1
60	M6_20dp		M6 x 20mm Dowel Pin	2
61	M6_in		M6 Lock Nut	1
62	M6x1.0_40.0sh		M6 x 1.0 x 40mm Socket Hd Cap Screw	1
63	M6_10shss		M6 x 10mm Socket Hd Shoulder Screw	2
64	62092	M8 x 1.25_35.0bh	M8 x 1.25 x 35mm Button Hd Cap Screw	1
65	M8_in		M8 Lock Nut	2
66	72069	McMaster Carr #98407A122	#10 E-Style Retaining Ring	2

Note:  
 1) Items marked in **Bold Italic** are high wear.  
 2) Use OEM tooling only.



CF977  
79264

NO. OF SHEETS: 1		SHEET NO.: 1		DATE: 12/4/2012	
DRAWN BY: [Blank]		CHECKED BY: [Blank]		APPROVED BY: [Blank]	
TITLE: Side Feed		PART NO.: CF977		REV: 1	
MATERIAL: [Blank]		QUANTITY: [Blank]		UNIT OF MEASURE: [Blank]	
MANUFACTURER: [Blank]		SPECIFICATIONS: [Blank]		DRAWING NO.: 79264	
REVISION: [Blank]		DESCRIPTION: [Blank]		APPROVAL: [Blank]	