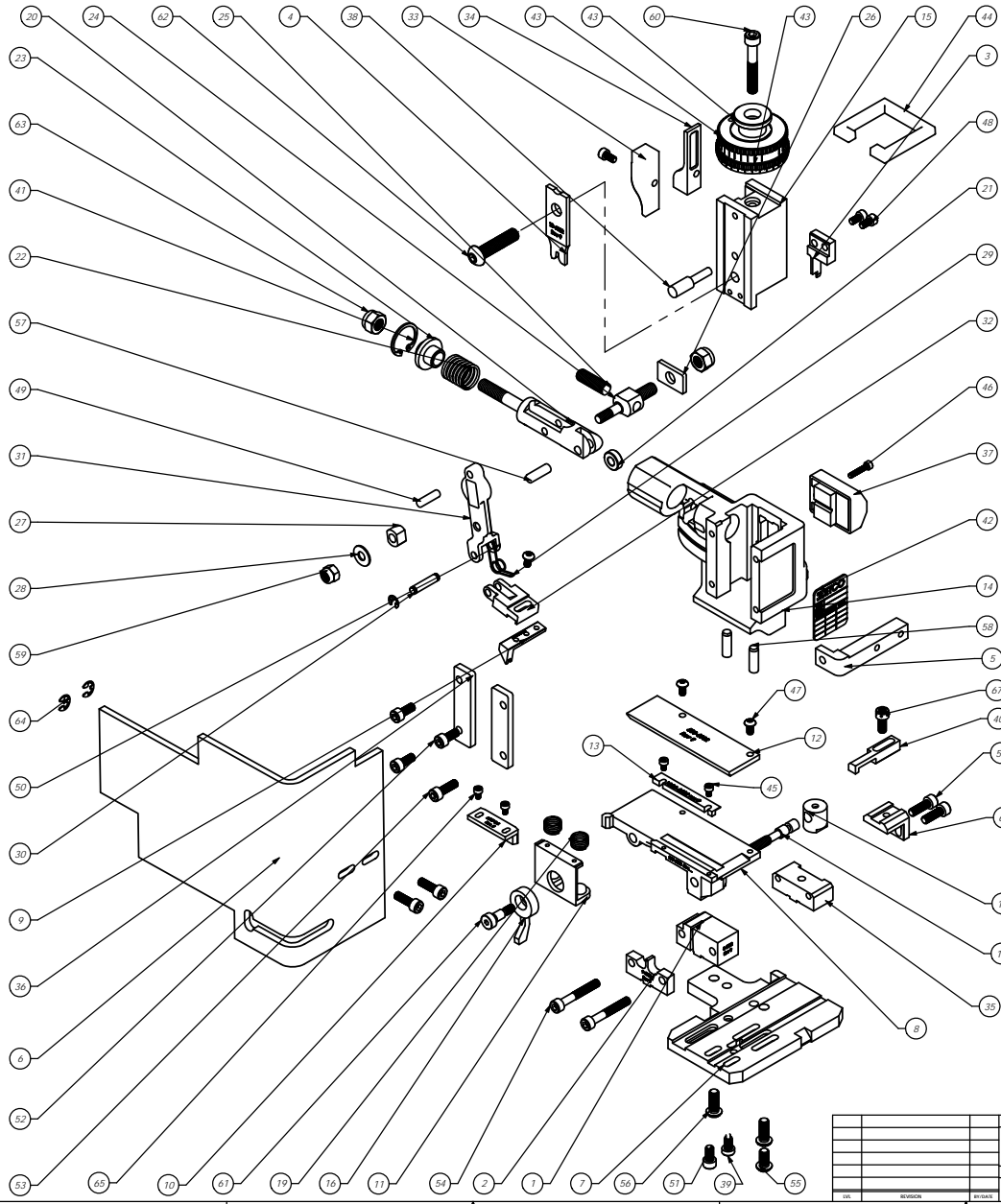


Parts List				
Item No	Part Code	Part No.	Description	QTY
1	62840	8-6032	Cut-off Die	1
2	62843	9-6032	Anvil	1
3	62841	12-6032	Cut-off Punch	1
4	62842	13-6032	Wire Rolling Tool	1
5	61606	26-6000	Guard Bracket	1
6	76403	199-3005	Safety Guard	1
7	62845	200-6032	Base Plate	1
8	62855	250-6032	Feed Plate	1
9	62846	301-6032	Feed Finger	1
10	62605	MM7-S	Brake Shoe	1
11	61736	MM7-S-1	Brake Shoe	1
12	62844	500-6032	Row Guide	1
13	62848	1000-6032	Front Guide	1
14	61542	MM1-S	Frame	1
15	61545	MM3-S	Flange	1
16	61550	MM8-S	Brake Lever	1
17	61551	MM9-S	Adjustment Screw Retainer	1
18	61552	MM10-S	Adjustment Screw	1
19	61553	MM11-S	Brake Spring	2
20	61554	MM12	Adjustable Feed Piston	1
21	61555	MM13	Cam Roller	1
22	61556	MM14	Piston Spring	1
23	61557	MM15	Spring Plate	1
24	61558	MM16	Feed Adjustment Block	1
25	61559	MM17	Feed Adjustment Screw	1
26	61560	MM18	Retainer	1
27	61561	MM19	Guide Block	1
28	61562	MM20	Feed Washer	1
29	61563	MM21	Feed Finger Spring	1
30	61564	MM22	Feed Finger Shaft	1
31	61565	MM23	Feed Arm	1
32	61566	MM24	Feed Finger Retainer	1
33	61573	MM31	Post Feed Cam	1
34	61574	MM32	Pre-Feed Cam	1
35	61581	MM42-S	Tool Block	1
36	61583	MM39	CG	2
37	61585	MM43	Counter Assy.	1
38	61586	MM44	Locator Pin	1
39	61588	MM47	Dog Screw	1
40	62850	MM50-S	Slipper/Wire Slip	1
41	61595	MM56	Retaining Ring	1
42	61598	MM59	ID Plate	1
43	61596	MM57	Continuous Regulation Head Assembly	1
44	61597	MM58	Protection Spacer	1
45	61594	MM55-S-08h	M3 x 8mm Socket Hd Cap Screw	2
46	61595	M3x0.5-16-08h	M3 x 0.5 x 16mm Socket Hd Cap Screw	1
47	61596	M4x 7-8-08h	M4 x 7 x 8mm Button Hd Cap Screw	3
48	61597	M4x0.7-8-D8h	M4 x 7 x 8 D Socket Hd Cap Screw	3
49	61598	M5-18-08p	M5 x 18mm Dowel Pin	1
50	61599	M5-M3-Nut	M5 External Retaining Ring	2
51	63521	M5x 8-10-08h	M5 x 8 x 10mm Socket Hd Cap Screw	1
52	61598	M5x 8-12-08h	M5 x 8 x 12mm Socket Hd Cap Screw	3
53	61599	M5x 8-16-D8h	M5 x 8 x 16mm Socket Hd Cap Screw	5
54	61598	M5x 8-35-08h	M5 x 08 x 35mm Socket Hd Cap Screw	2
55	61599	M6x 0-12-08h	M6 x 1.0 x 12mm Button Hd Cap Screw	1
56	61599	M6x 0-16-08h	M6 x 1.0 x 16mm Button Hd Cap Screw	2
57	61599	M6-18dp	M6 x 18mm Dowel Pin	1
58	61599	M6-20dp	M6 x 20mm Dowel Pin	2
59	61599	M6-Nut	M6 Lock Nut	1
60	61599	M6x 1-40-08h	M6 x 1.0 x 40mm Socket Hd Cap Screw	1
61	61599	M6-10hss	M6 x 10mm Socket Hd Shoulder Screw	1
62	62092	M8 x 1.25-35-08h	M8 x 1.25 x 35mm Button Hd Cap Screw	1
63	61599	M8-Nut	M8 Lock Nut	2
64	72069	McMaster Cam 2908374-122	#10 E-Style Retaining Ring	2
65	61599	M3 x 5	M3 x 5	1
66	62703	MM38-S-1	Backup Block	1
67	61599	M5-8-12-D8h	M5 x 8 x 12mm Socket Hd Cap Screw	1

Note:
 1) Items marked in "Bold Italic" are high wear components.
 2) Use OEM replacement tooling only.



R132AS
79279

REV	REVISION	BY	DATE	DESCRIPTION
1				
2				

SEE PARTS LIST	SEE PARTS LIST
QUANTITY	DESCRIPTION
1	R132
1	USED ON
1	APPLICATION

SEE PARTS LIST	SEE PARTS LIST
QUANTITY	DESCRIPTION
1	R132AS
1	USED ON
1	APPLICATION