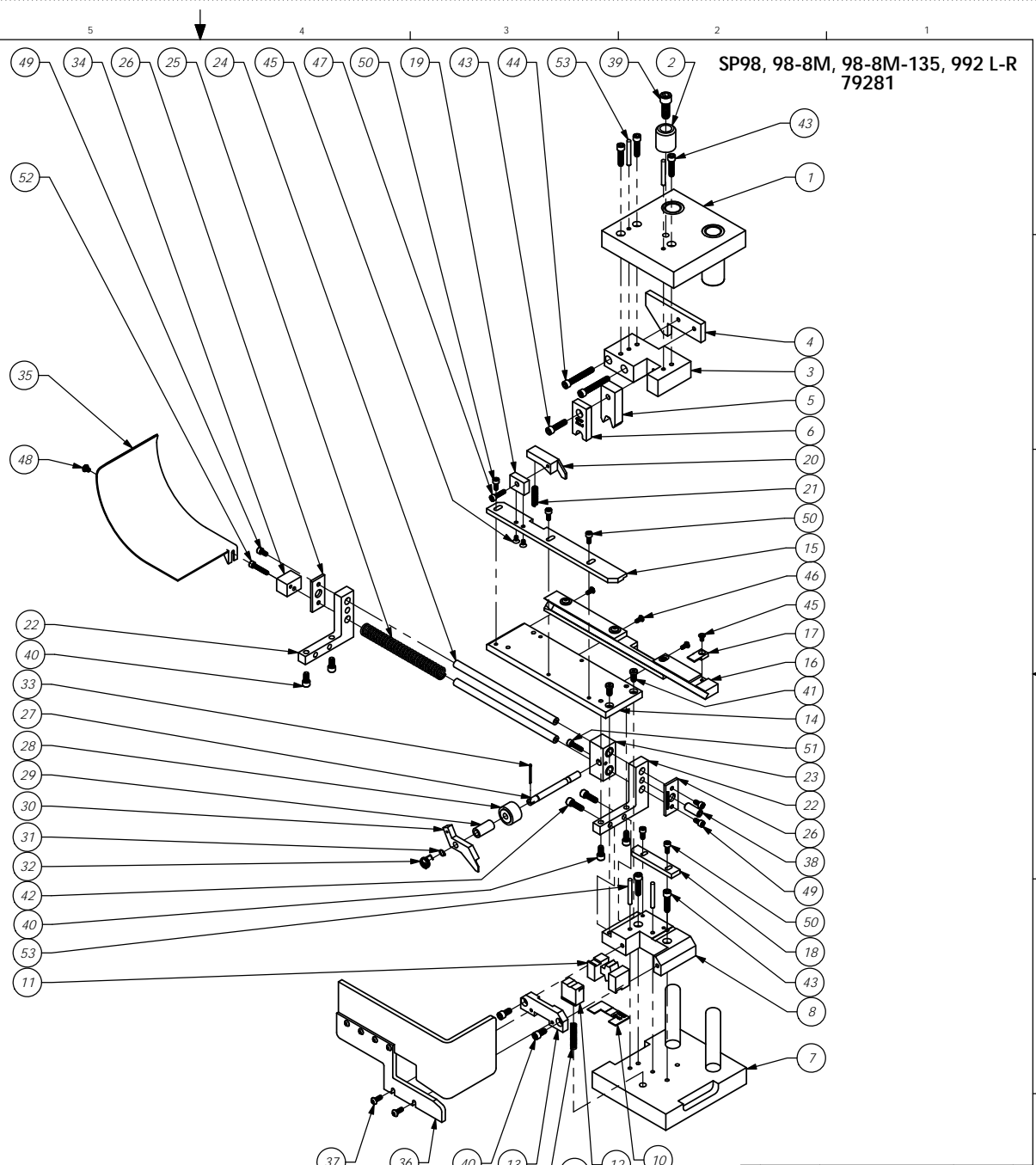


ITEM NO.	PART NUMBER	DESCRIPTION	SP98-8M-135/QTY.
1	68542-Die Hat	Die Hat	1
2	68001 - HAT SHANK	Hat Shank	1
3	68543-Tool Holder	Tool Holder	1
4	68039-Cam	Cam - 7-8mm	1
5	68752-Roll Tool	Roll Tool	1
6	62127-Front Driver	Front Driver (8MM)	1
7	68544-Die Base	Die Base	1
8	68545-Die Holder	Die Holder	1
9	68012 - SPRING	Spring	1
10	68034 - SPACER	Spacer	1
11	68547-Anvil	Anvil	1
12	68548-Carrier Cut Off	Carrier Cut Off	1
13	68546-Die Cover	Die Cover	1
14	68549-Feed Plate	Feed Plate	1
15	68550-Front Guide	Front Guide	1
16	68744-Rear Guide	Rear Guide	1
17	68745-Rear Guide Insert	Rear Guide Insert/Stripper	1
18	68747-Rear Guide Extension	Rear Guide Extension	1
19	68053-Brake Mount	Brake Mount	1
20	68499-Brake	Brake	1
21	68020 - BRAKE SPRING	Spring	1
22	68055-Slide Bracket	Slide Bracket	2
23	68056-Slide Block	Slide Block	1
24	68028 - SLIDE SHAFT	Slide Shaft	2
25	68031 - SPRING	Spring	1
26	68029 - SLIDE END CAP	Slide End Cap	2
27	68551-Feed Finger Shaft	Feed Finger Shaft	1
28	68022 - BEARING	Bearing	1
29	62869-Feed Finger Spacer	Feed Finger Spacer	1
30	68024 - FEED FINGER	Feed Finger	1
31	68025 - SPRING CLIP	Spring Clip	1
32	68026 - FEED FINGER SPRING	Feed Finger Spring	1
33	Default	68090-Cotter Pin - 1/6" x 1"	1
34	62867-Chute Spacer	Chute Spacer	1
35	68064-Chute	Chute	1
36	68743-Guard	Guard	1
37	10-32_50bh	#10-32 x 1/2" Button Hd Cap Screw	2
38	3.8-16_1.00ss	3/8-16 x 2" Socket Hd. Set Screw	1
39	3.8-16_1.00sh	3/8-16 x 1" Socket Hd Cap Screw	1
40	1.4-20_50sh	1/4-20 x 1/2" Socket Hd Cap Screw	6
41	1.4-20_50lsh	Low Hd. Socket Cap Screw	2
42	1.4-20_75sh	1/4-20 x 3/4" Socket Hd Cap Screw	2
43	1.4-20_1.00sh	1/4-20 x 1" Socket Hd Cap Screw	6
44	1.4-20_1.75 sh	1/4-20 x 1 3/4" Socket Hd Cap Screw	2
45	8-32_31fhs	#8-32 x 5/16" Flat Hd Screw - Phillips	3
46	8-32_38bh	#8-32 x 3/8" Button Hd Cap Screw	3
47	10-24_75sh	#10-24 x 3/4" Socket Hd Cap Screw	1
48	10-32_25bh	#10-32 x 1/4" Button Hd Cap Screw	1
49	10-32_38sh	#10-32 x 3/8" Socket Hd Cap Screw	3
50	10-32_44sh	#10-32 x 7/16" Socket Hd Cap Screw	5
51	10-32_75sh	#10-32 x 3/4" Socket Hd Cap Screw	1
52	10-32_1.00sh	#10-32 x 1" Socket Hd Cap Screw	1
53	3.16_1.5dp	3/16 x 1 1/2" Dowel Pin	4



SP98, 98-8M, 98-8M-135, 992 L-R 79281

DO NOT SCALE DRAWING		UNLESS OTHERWISE SPECIFIED DIMENSIONS ARE IN INCHES TOLERANCES ARE:	
FRACTIONS	DECIMALS	ANGLES	
±1/64	.XX ±.01	±1/2°	
	.XXX ±.001		
	.XXXX ±.0002		
SURFACE FINISH: <input checked="" type="checkbox"/> ALL OVER		REVISION	
THE INFORMATION CONTAINED HEREIN IS THE PROPERTY OF ETCO ENGINEERED PRODUCTS AND IS TO BE USED ONLY FOR THE PURPOSES AND IN THE MANNER SPECIFIED HEREIN. ANY OTHER USE IS PROHIBITED.		DATE	BY
F	Re-ass'y from AP 7022 Rev E	1/2012	
LVL	REVISION	BY/DATE	

ITEM NO.	PART No.	DESCRIPTION	MATERIAL SPECIFICATION	QTY REQD
PAPER LIST				
E ETCO ENGINEERED PRODUCTS 25 BELLOWS STREET WARWICK RI 02888 (401)-467-2400				
SP98-8M-135 "8mm" L-R Applicator				
SCALE: 1:4		DATE: SCJ	DATE: 1/27/12	REV: F