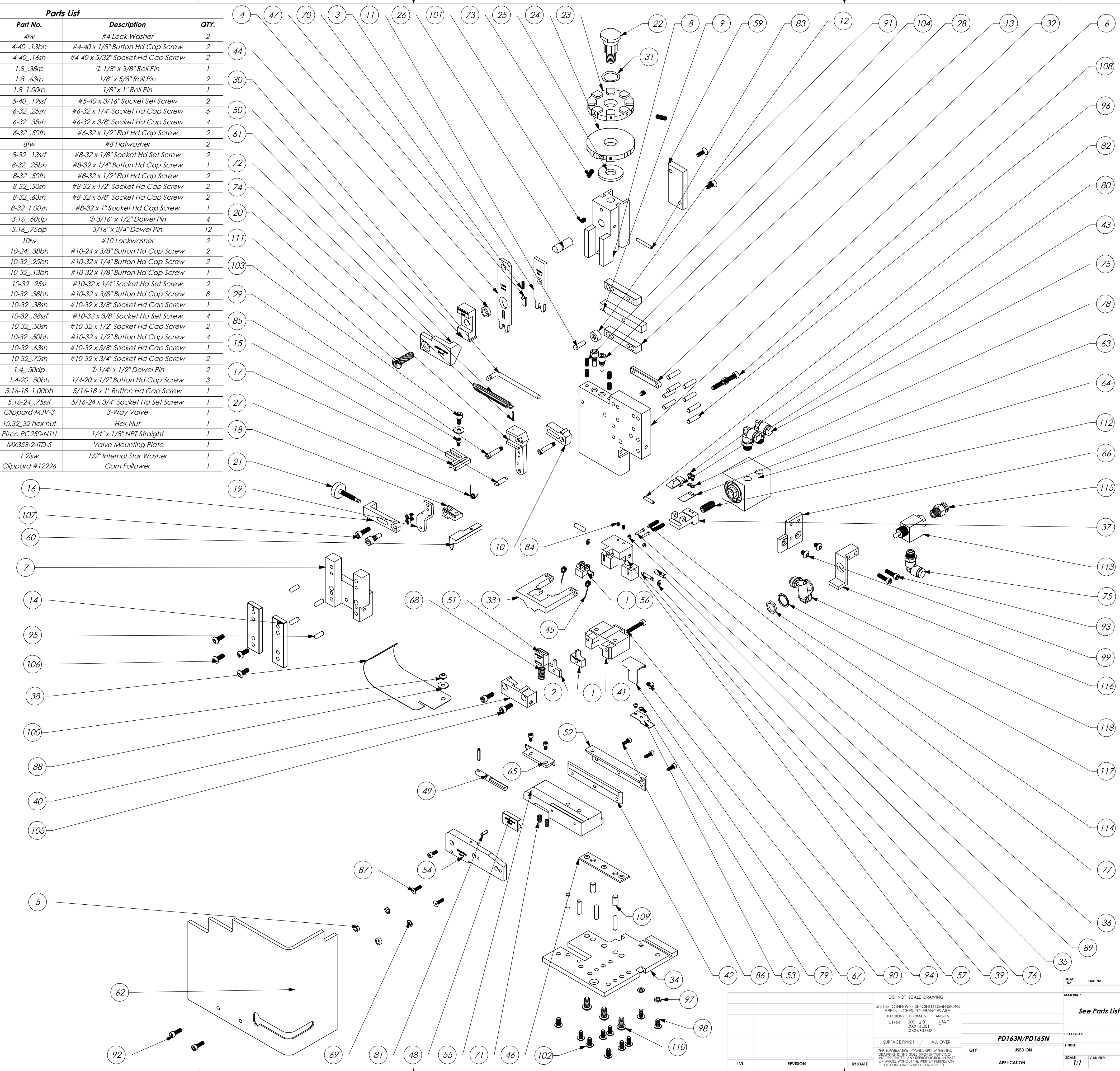


Parts List				Parts List					
Item No.	Part Code	Part No.	Description	QTY.	Item No.	Part Code	Description	QTY.	
1	76652	9-4001	Wire Anvil	1	78	63202	4lw	#4 Lock Washer	2
2	76651	9A-4001	Insulation Anvil	1	79	63203	4-40_13bh	#4-40 x 1/8" Button Hd Cap Screw	2
3	76655	13-4001	Wire Rolling Tool	1	80	63204	4-40_16sh	#4-40 x 5/32" Socket Hd Cap Screw	2
4	76559	14-4001	Insulation Rolling Tool	1	81	63205	1.8_38rp	Ø 1/8" x 3/8" Roll Pin	1
5	73888	G5-125	Guard Spacer	2	82	63053	1.8_63rp	1/8" x 5/8" Roll Pin	2
6	71494	MX2A-S-1	Mounting Frame	1	83	62040	1.8_100rp	1/8" x 1" Roll Pin	1
7	71030	MX2B-S	Plunger Frame	1	84	63206	5-40_19ssf	#5-40 x 3/16" Socket Set Screw	2
8	74343	MX3	Ram	1	85	63207	6-32_25sh	#6-32 x 1/4" Socket Hd Cap Screw	5
9	74438	MX5-S	Cam Rack	1	86	63209	6-32_38sh	#6-32 x 3/8" Socket Hd Cap Screw	4
10	74346	MX6-1	Gear Arm	1	87	63057	6-32_50fh	#6-32 x 1/2" Flat Hd Cap Screw	2
11	74347	MX7	Cam Pin	1	88	63210	8fw	#8 Flatwasher	2
12	74350	MX8	Cam Roller	1	89	63211	8-32_13ssf	#8-32 x 1/8" Socket Hd Set Screw	2
13	74351	MX10-S	Rack Pad	2	90	63212	8-32_25bh	#8-32 x 1/4" Button Hd Cap Screw	1
14	74352	MX11	Gib	2	91	63052	8-32_50fh	#8-32 x 1/2" Flat Hd Cap Screw	2
15	74356	MX12	Feed Finger Pivot Pin	1	92	63164	8-32_50sh	#8-32 x 1/2" Socket Hd Cap Screw	2
16	74360	MX13	Adjusting Bar	1	93	63162	8-32_63sh	#8-32 x 5/8" Socket Hd Cap Screw	2
17	76868	MX14-1-S	Feed Finger Arm	1	94	63213	8-32_100sh	#8-32 x 1" Socket Hd Cap Screw	1
18	76874	MX15-1-S	Feed Finger Guide	1	95	63158	3.16_50dp	Ø 3/16" x 1/2" Dowel Pin	4
19	74364	MX16	Retainer	1	96	63470	3.16_75dp	3/16" x 3/4" Dowel Pin	12
20	71495	MX18-S-1	Swing Arm	1	97	78517	10lw	#10 Lockwasher	2
21	74376	MX25	Stroke Adjustment Screw	1	98	63531	10-24_38bh	#10-24 x 3/8" Button Hd Cap Screw	2
22	74407	MX33	Mounting Post	1	99		10-32_25bh	#10-32 x 1/4" Button Hd Cap Screw	2
23	72002	MX34-D	Wire Crimp Dial	1	100		10-32_13bh	#10-32 x 1/8" Button Hd Cap Screw	1
24	74409	MX35	Insulation Dial	1	101	63054	10-32_25ss	#10-32 x 1/4" Socket Hd Set Screw	2
25	74411	MX36	Dial Spacer	1	102	78993	10-32_38bh	#10-32 x 3/8" Button Hd Cap Screw	8
26	74412	MX44	Locating Dowel	1	103	70110	10-32_38sh	#10-32 x 3/8" Socket Hd Cap Screw	1
27	74415	MX45-S	Feed Finger Spring	1	104		10-32_38ssf	#10-32 x 3/8" Socket Hd Set Screw	4
28	74419	MX50	Safety Pivot Pin	3	105	63056	10-32_50sh	#10-32 x 1/2" Socket Hd Cap Screw	2
29	71493	MX52-S-1	Pivot Pin	2	106		10-32_50bh	#10-32 x 1/2" Button Hd Cap Screw	4
30	74614	MX90-S	Spring Bracket	1	107	70293	10-32_63sh	#10-32 x 5/8" Socket Hd Cap Screw	1
31	72310	MX104	Wave Disc Spring	1	108	63532	10-32_75sh	#10-32 x 3/4" Socket Hd Cap Screw	2
32	71678	MX105	Pivot Pin Plate	1	109		1.4_50dp	Ø 1/4" x 1/2" Dowel Pin	2
33	70865	MX301-4-ITD-S	Latching Gate	1	110	63632	1.4-20_50bh	1/4-20 x 1/2" Button Hd Cap Screw	3
34	72261	MX302-1-ITD-S	Base Plate	1	111	63055	5.16-18_1.00bh	5/16-18 x 1" Button Hd Cap Screw	1
35	76563	MX304-ITD-S	Hinge Pin	2	112		5.16-24_75ssf	5/16-24 x 3/4" Socket Hd Set Screw	1
36	76564	MX305-ITD-S	Pin	2	113	72318	Clippard MJV-3	3-Way Valve	1
37	72258	MX306-1-ITD-S	Insulation Pusher for 3/16 Fern. Terminal	1	114		15.32_32 hex nut	Hex Nut	1
38	76566	MX307-ITD-S	Stock Chute	1	115	73222	Pisco PC250-N1U	1/4" x 1/8" NPT Straight	1
39	76567	MX308-ITD-S	Latch Pivot Pin	1	116	61993	MX358-2-ITD-S	Valve Mounting Plate	1
40	78936	MX309-4-ITD-S	Cut-off Keeper	1	117		1.25w	1/2" Internal Star Washer	1
41	72257	MX310-1-ITD-S	Die Holder	1	118	72317	Clippard #12296	Cam Follower	1
42	76571	MX312-ITD-S	Left Feed Shim [3/16" Terminal]	1					
43	76573	MX314-ITD-S	Catch	1					
44	76574	MX315-ITD-S	Insulation Tool Spacer	1					
45	76575	MX316-ITD-S	Latch Spring	2					
46	76576	MX317-ITD-S	Base Plate Spacer	1					
47	76578	MX319-ITD-S	Knock off	1					
48	76579	MX320-ITD-S	Brake	1					
49	76580	MX321-ITD-S	Brake Actuator	1					
50	76583	MX324-ITD-S	Cut-off Pad Pusher	1					
51	78935	MX326-4-ITD-S	Cut-off Pad	1					
52	76586	MX327-ITD-S	Left Feed Rail	1					
53	76587	MX328-ITD-S	Hold Down Spring	1					
54	76588	MX329-ITD-S	Right Feed Rail	1					
55	76589	MX330-ITD-S	Feed Plate	1					
56	76590	MX331-ITD-S	Latch (Automatic)	1					
57	76591	MX332-ITD-S	Support	1					
58	76593	MX334-ITD-S	Latch/Wire Stop	1					
59	76608	MX335-ITD-S	Cam	1					
60	71686	MX337-2-ITD-S	Feed Finger	1					
61	72233	MX338-1-ITD-S	Arm Switch Cam (1 1/8" Stroke)	1					
62	70745	MX339-ITD-S	Guard	1					
63	72260	MX344-1-ITD-S	Leaf Spring	1					
64	72099	MX348-ITD-S	.550 Strike Slide Cylinder	1					
65	72893	MX357-ITD-S	Bracket	1					
66	78733	MX358-1-ITD-S	Valve Mounting Plate	1					
67	78835	MX360-ITD-S	Scrap Retainer	1					
68	78719	LC-051D-11-M	Compression Spring	1					
69	72069	McMaster-Carr #98407A118	#8 E-Style Retaining Ring	2					
70	72315	LC-022A-4	Compression Spring	1					
71	78681	LC-029B-3-M	Compression Spring	2					
72	74611	LE-037CD-6	Extension Spring	1					
73	70739	McMaster-Carr #3126A53	Spring Plunger	2					
74	74447	McMaster-Carr #98296A109	Expansion Pin (1/16 x 1/2)	1					
75	72352	Pisco PL250-N1U	Ø1/4" x 1/8-NPT Elbow Fitting, White	3					
76	63200	Truarc #5555-12	Retaining Ring	2					
77	63201	Vlier #PH-51-P	Spring Plunger	2					



PD163/165N
(.100-.140 Dia. Ins.)
79293

NOTE:
 (1) Items marked in bold text are high wear items.
 (2) Use OEM replacement tooling only.
 (3) Recommended machine speed for automatic equipment is a maximum of 3500 parts per hour.

REV.	DESCRIPTION	DATE	BY	CHKD.	APP.
1	PD163/165N (.10-14 Dia Ins.)	24Jun10	CSG		

ITEM NO.	PART NO.	DESCRIPTION	MATERIAL SPECIFICATION	QTY.
1	76652	Wire Anvil		1
2	76651	Insulation Anvil		1
3	76655	Wire Rolling Tool		1
4	76559	Insulation Rolling Tool		1
5	73888	Guard Spacer		2
6	71494	Mounting Frame		1
7	71030	Plunger Frame		1
8	74343	Ram		1
9	74438	Cam Rack		1
10	74346	Gear Arm		1
11	74347	Cam Pin		1
12	74350	Cam Roller		1
13	74351	Rack Pad		2
14	74352	Gib		2
15	74356	Feed Finger Pivot Pin		1
16	74360	Adjusting Bar		1
17	76868	Feed Finger Arm		1
18	76874	Feed Finger Guide		1
19	74364	Retainer		1
20	71495	Swing Arm		1
21	74376	Stroke Adjustment Screw		1
22	74407	Mounting Post		1
23	72002	Wire Crimp Dial		1
24	74409	Insulation Dial		1
25	74411	MX36	Dial Spacer	1
26	74412	MX44	Locating Dowel	1
27	74415	MX45-S	Feed Finger Spring	1
28	74419	MX50	Safety Pivot Pin	3
29	71493	MX52-S-1	Pivot Pin	2
30	74614	MX90-S	Spring Bracket	1
31	72310	MX104	Wave Disc Spring	1
32	71678	MX105	Pivot Pin Plate	1
33	70865	MX301-4-ITD-S	Latching Gate	1
34	72261	MX302-1-ITD-S	Base Plate	1
35	76563	MX304-ITD-S	Hinge Pin	2
36	76564	MX305-ITD-S	Pin	2
37	72258	MX306-1-ITD-S	Insulation Pusher for 3/16 Fern. Terminal	1
38	76566	MX307-ITD-S	Stock Chute	1
39	76567	MX308-ITD-S	Latch Pivot Pin	1
40	78936	MX309-4-ITD-S	Cut-off Keeper	1
41	72257	MX310-1-ITD-S	Die Holder	1
42	76571	MX312-ITD-S	Left Feed Shim [3/16" Terminal]	1
43	76573	MX314-ITD-S	Catch	1
44	76574	MX315-ITD-S	Insulation Tool Spacer	1
45	76575	MX316-ITD-S	Latch Spring	2
46	76576	MX317-ITD-S	Base Plate Spacer	1
47	76578	MX319-ITD-S	Knock off	1
48	76579	MX320-ITD-S	Brake	1
49	76580	MX321-ITD-S	Brake Actuator	1
50	76583	MX324-ITD-S	Cut-off Pad Pusher	1
51	78935	MX326-4-ITD-S	Cut-off Pad	1
52	76586	MX327-ITD-S	Left Feed Rail	1
53	76587	MX328-ITD-S	Hold Down Spring	1
54	76588	MX329-ITD-S	Right Feed Rail	1
55	76589	MX330-ITD-S	Feed Plate	1
56	76590	MX331-ITD-S	Latch (Automatic)	1
57	76591	MX332-ITD-S	Support	1
58	76593	MX334-ITD-S	Latch/Wire Stop	1
59	76608	MX335-ITD-S	Cam	1
60	71686	MX337-2-ITD-S	Feed Finger	1
61	72233	MX338-1-ITD-S	Arm Switch Cam (1 1/8" Stroke)	1
62	70745	MX339-ITD-S	Guard	1
63	72260	MX344-1-ITD-S	Leaf Spring	1
64	72099	MX348-ITD-S	.550 Strike Slide Cylinder	1
65	72893	MX357-ITD-S	Bracket	1
66	78733	MX358-1-ITD-S	Valve Mounting Plate	1
67	78835	MX360-ITD-S	Scrap Retainer	1
68	78719	LC-051D-11-M	Compression Spring	1
69	72069	McMaster-Carr #98407A118	#8 E-Style Retaining Ring	2
70	72315	LC-022A-4	Compression Spring	1
71	78681	LC-029B-3-M	Compression Spring	2
72	74611	LE-037CD-6	Extension Spring	1
73	70739	McMaster-Carr #3126A53	Spring Plunger	2
74	74447	McMaster-Carr #98296A109	Expansion Pin (1/16 x 1/2)	1
75	72352	Pisco PL250-N1U	Ø1/4" x 1/8-NPT Elbow Fitting, White	3
76	63200	Truarc #5555-12	Retaining Ring	2
77	63201	Vlier #PH-51-P	Spring Plunger	2