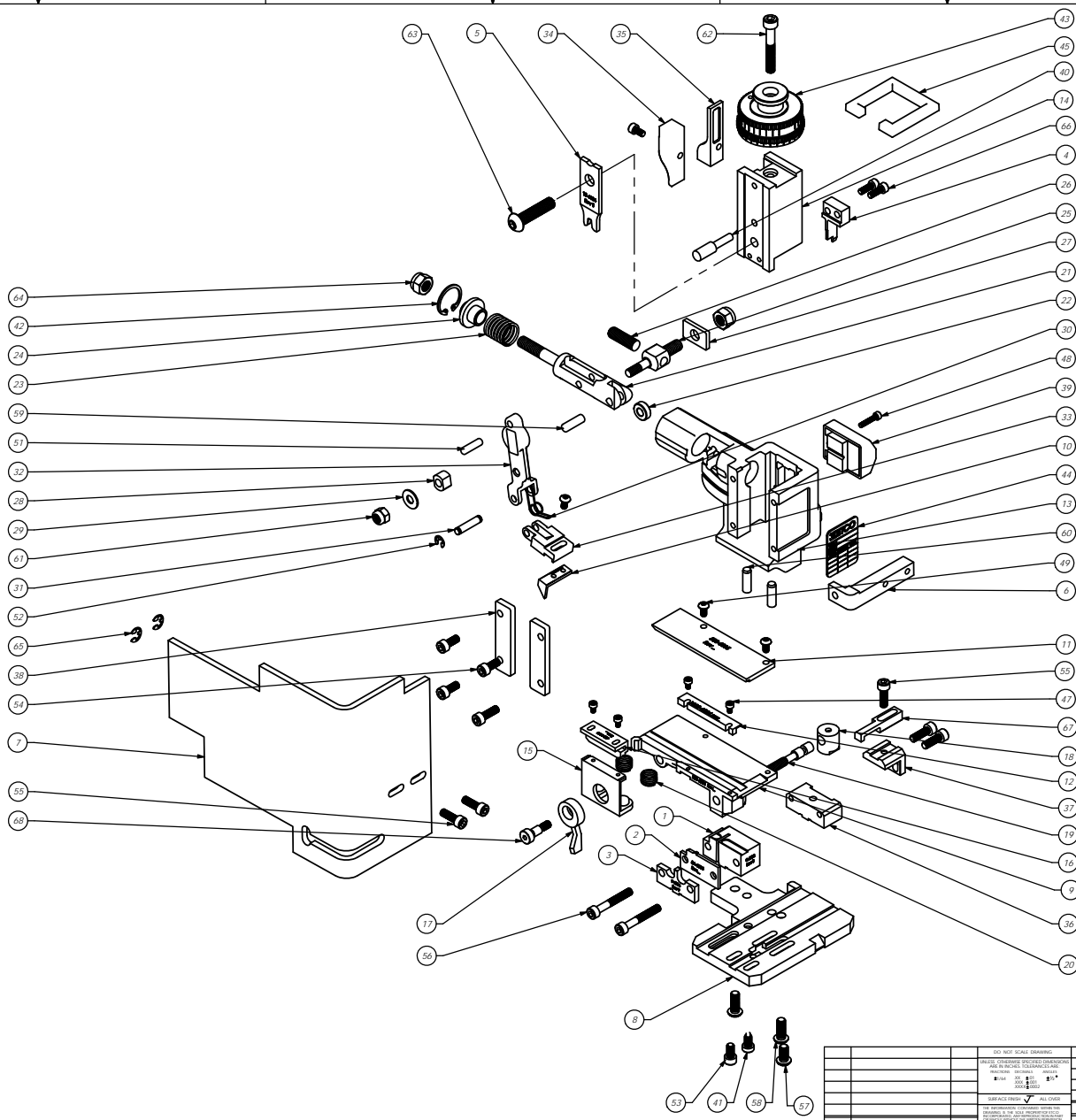


Parts List				
Item No.	Part Code	Part No.	Description	QTY.
1	62988	8-6034	Cut-off Die	1
2	62989	8A-6034	Die Cover Plate	1
3	62991	9-6034	Anvil	1
4	62992	12-6034	Cut-off Punch	1
5	62990	12-6034	Wire Rolling Tool	1
6	61626	26-6000	Guard Bracket	1
7	76403	199-3005	Safety Guard	1
8	63038	200-6034	Base Plate	1
9	62993	250-6034	Feed Plate	1
10	62996	303-6034	Feed Finger	1
11	62994	500-6034	Rear Guide	1
12	62997	1000-6034	Front Guide	1
13	61542	MM1-S	Frame	1
14	61545	MM3-S	Plunger	1
15	61736	MM7-S-1	Brake	1
16	63179	403-3166	Brake Shoe	1
17	61550	MM8-S	Brake Lever	1
18	61551	MM9-S	Adjustment Screw Retainer	1
19	61552	MM10-S	Adjustment Screw	1
20	61553	MM11-S	Brake Spring	2
21	61554	MM12	Adjustable Feed Piston	1
22	61555	MM13	Cam Roller	1
23	61556	MM14	Piston Spring	1
24	61557	MM15	Spring Plate	1
25	61558	MM16	Feed Adjustment Block	1
26	61559	MM17	Feed Adjustment Screw	1
27	61560	MM18	Retainer	1
28	61561	MM19	Guide Block	1
29	61562	MM20	Feed Washer	1
30	61563	MM21	Feed Finger Spring	1
31	61564	MM22	Feed Finger Shaft	1
32	61565	MM23	Feed Arm	1
33	61566	MM24	Feed Finger Retainer	1
34	61573	MM31	Post-feed Cam	1
35	61574	MM32	Pie-feed Cam	1
36	61581	MM37-S	Top Block	1
37	62703	MM38-S-1	Backup Block	1
38	61583	MM39	Gib	2
39	61585	MM42	Counter Assy.	1
40	61586	MM44	Locator Pin	1
41	61588	MM47	Drop Screw	1
42	61595	MM56	Retaining Ring	1
43	61596	MM57	Continuous Regulation Head Assembly	1
44	61598	MM59	ID Plate	1
45	61599	MM68	Protection Spacer	1
46	61657	1800-6003	Top Guide / Stock Chute	1
47	M3x0.5-5.0h		M3 x 5mm Socket Hd Cap Screw	4
48	M3x0.5-16.0h		M3 x 0.5 x 16mm Socket Hd Cap Screw	1
49	M4x 7-8.0h		M4 x 7 x 8mm Button Hd Cap Screw	3
50	M4x0.7-8.0h		M4 x 7 x 8.0 Socket Hd Cap Screw	1
51	M5-18.0dp		M5 x 18mm Dowel Pin	1
52	M5-M5.0ear		M5 External Retaining Ring	2
53	M5x 8-10.0h		M5 x 8 x 10mm Socket Hd Cap Screw	1
54	M5x 8-12.0h		M5 x 8 x 12mm Socket Hd Cap Screw	3
55	M5x 8-16.0h		M5 x 8 x 16mm Socket Hd Cap Screw	6
56	M5x 8-35.0h		M5 x 08 x 35mm Socket Hd Cap Screw	2
57	M6x1.0-12.0h		M6 x 1.0 x 12mm Button Hd Cap Screw	1
58	M6x1.0-16.0h		M6 x 1.0 x 16mm Button Hd Cap Screw	2
59	M6-18dp		M6 x 18mm Dowel Pin	1
60	M6-20dp		M6 x 20mm Dowel Pin	2
61	M6-in		M6 Lock Nut	1
62	M6x1.0-40.0h		M6 x 1.0 x 40mm Socket Hd Cap Screw	1
63	M6x1.25-35.0h		M6 x 1.25 x 35mm Button Hd Cap Screw	1
64	M6-in		M6 Lock Nut	2
65	M6-Master Coat #0862026122		#10 E-Style Retaining Ring	2
66	M4x0.7-12.0h		M4 x 12mm Socket Hd Cap Screw	2
67	MM52-S		Stripper/Wire Stop	1
68	M5-10hss		M5 x 10mm Socket Hd Shoulder Screw	1

NOTE:
(1) Items marked in bold text are high wear items.
(2) Use OEM replacement tooling only.



RL176
79294

REV	REVISED	DATE	BY	CHKD	APP'D
SEE PARTS LIST Side Feed RL176 QTY 1 USED ON 1-1 DRAWN 1-1 CHECKED 1-1 DESIGNED 1-1 ENGINEERED 1-1 MANUFACTURED 1-1					
6/25/2012					