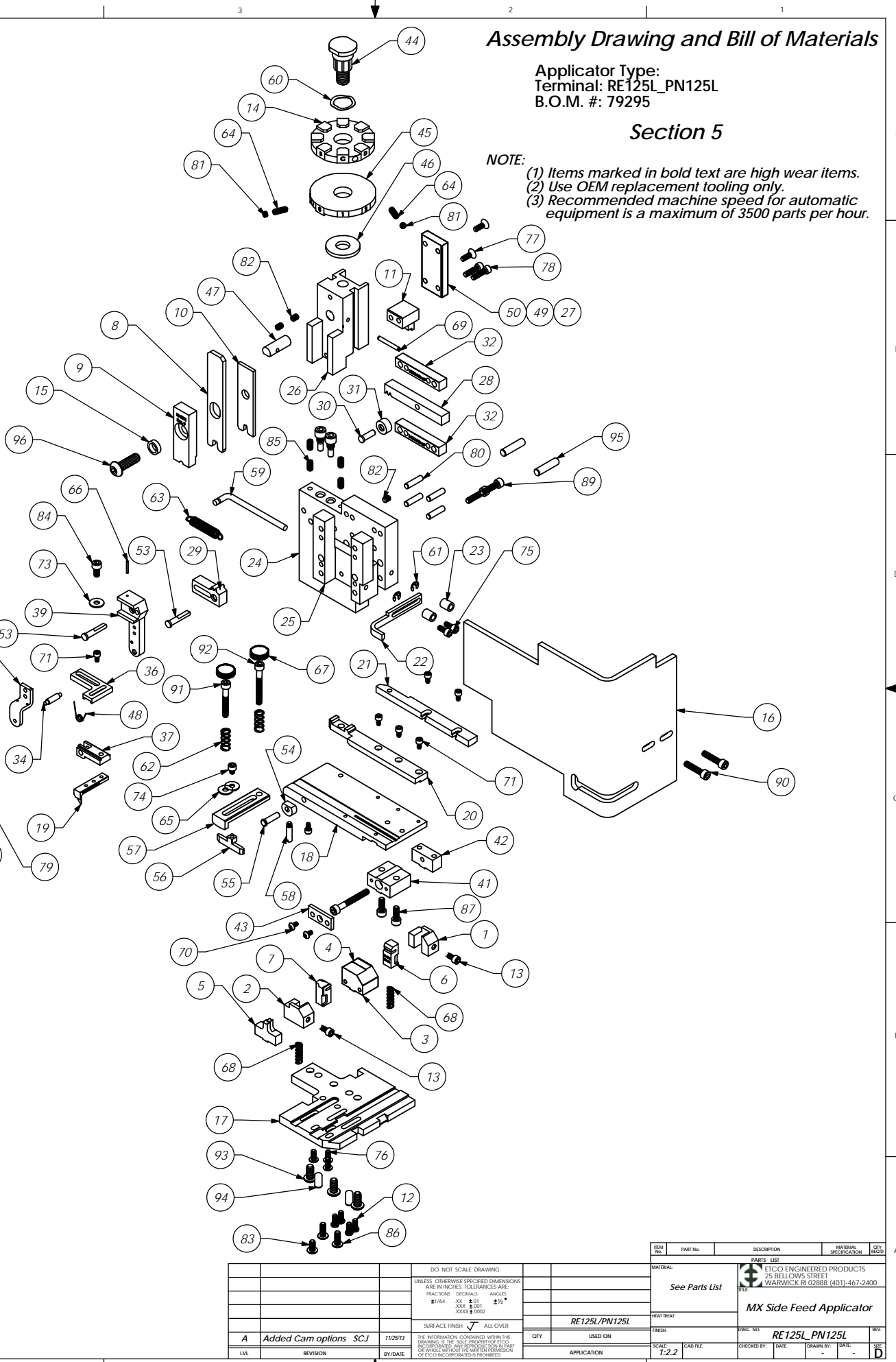


ITEM NO.	QTY.	Part Code	PART NUMBER	DESCRIPTION	ITEM NO.	QTY.	Part Code	PART NUMBER	DESCRIPTION
1	1	74287	8-3000	Cut-off Pad Retainer	69	1	62040	1.8_1.00rp	1/8" x 1" Roll Pin
2	1	74440	8-3003	Front Cut-off Pad Retainer	70	2	63792	6-32_.25bh	#6-32 x 1/4" Button Hd Cap Screw
3	1	63005	8A-3144	Cut-off Die (RE125L)	71	7	63207	6-32_.25sh	#6-32 x 1/4" Socket Hd Cap Screw
4	1	63011	8A-3144-1	Cut-off Die (PN125L)	72	2	63209	6-32_.38sh	#6-32 x 3/8" Socket Hd Cap Screw
5	1	63006	9-3144	Anvil	73	1	63210	8fw	#8 Flatwasher
6	1	74286	12-3000	Rear cut-off pad	74	1	60265	8-32_.19sh	#8-32 x 3/16" Socket Hd Cap Screw
7	1	74441	12-3003	Cut-off Pad	75	2	63161	8-32_.38sh	#8-32 x 3/8" Socket Hd Cap Screw
8	1	63008	14-3144	Insulation Rolling Tool	76	3	61472	8-32_.38bh	#8-32 x 3/8" Button Hd Cap Screw
9	1	62336	15-3001	Driver	77	2	63052	8-32_.50fh	#8-32 x 1/2" Flat Hd Cap Screw
10	1	63007	13-3144	Wire Rolling Tool	78	2	63162	8-32_.63sh	#8-32 x 5/8" Socket Hd Cap Screw
11	1	63010	15-3144	Driver	79	4	63158	3.16_.50dp	Φ 3/16" x 1/2" Dowel Pin
12	4	75770	26-3020	#8-32 x 3/8" Button Hd Cap Screw	80	4	63470	3.16_.75dp	Φ 3/16" x 3/4" Dowel Pin
13	2	77265	26-3088	Locking Screw	81	2		10-32_.13hl	#10-32 x 1/8" Hollow Lock Socket Hd Set Screw
14	1	72269	34-3016	Wire Crimp Dial	82	3	63054	10-32_.25ss	#10-32 x 1/4" Socket Hd Set Screw
15	1	63001	153S-3001	IRT Spacer	83	1	78993	10-32_.38bh	#10-32 x 3/8" Button Hd Cap Screw
16	1	76403	199-3005	Safety Guard	84	1	70110	10-32_.38sh	#10-32 x 3/8" Socket Hd Cap Screw
17	1	63918	200-3144	Baseplate	85	4	71626	10-32_.38ss	#10-32 x 3/8" Socket Hd Set Screw
18	1	63002	250-3144	Feed Plate	86	2	76501	10-32_.50bh	#10-32 x 1/2" Button Hd Cap Screw
19	1	61697	303-3009-1	Feed Finger	87	6	63056	10-32_.50sh	#10-32 x 1/2" Socket Hd Cap Screw
20	1	63003	500-3144	Rear Guide Rail	88	1	70293	10-32_.63sh	#10-32 x 5/8" Socket Hd Cap Screw
21	1	63004	1000-3144	Front Guide Rail	89	2	63532	10-32_.75sh	#10-32 x 3/4" Socket Hd Cap Screw
22	1	74568	1600-3000	Stripper / Wire Stop	90	2	70925	10-32_.88sh	#10-32 x 7/8" Socket Hd Cap Screw
23	2	74491	GS-375	Guard Spacer	91	1	77396	10-32_1.25sh	#10-32 x 1 1/4" Socket Hd Cap Screw
24	1	71029	MX2A-S	Mounting Frame	92	2	63826	10-32_1.50sh	#10-32 x 1 1/2" Socket Hd Cap Screw
25	1	71030	MX2B-S	Plunger Frame	93	3	63632	1.4-20_.50bh	1/4-20 x 1/2" Button Hd Cap Screw
26	1	74343	MX3	Ram	94	2	63827	1.4_.50dp	Φ 1/4" x 1/2" Dowel Pin
27	1	74344	MX4-S	Cam (1 5/8" Up Stroke)	95	2	63510	1.4_1.00dp	1/4 x 1" Dowel Pin
28	1	74438	MX5-S	Cam Rack	96	1	63055	5.16-18_1.00bh	5/16-18 x 1" Button Hd Cap Screw
29	1	74346	MX6	Gear Arm					
30	1	74347	MX7	Cam Pin					
31	1	74350	MX8	Cam Roller					
32	2	74351	MX10-S	Rack Pad					
33	2	74352	MX11	Gib					
34	1	74356	MX12	Feed Finger Pivot Pin					
35	1	74360	MX13	Adjusting Bar					
36	1	74361	MX14-S	Feed Finger Arm					
37	1	74362	MX15-S	Feed Finger Guide					
38	1	74364	MX16	Retainer					
39	1	74371	MX18-S	Swing Arm					
40	1	74376	MX25	Stroke Adjustment Screw					
41	1	74384	MX29-S	Slide Support					
42	1	74388	MX30-S	Support Anchor					
43	1	74390	MX32-S	Support Cover					
44	1	74407	MX33	Mounting Post					
45	1	74409	MX35	Insulation Dial					
46	1	74411	MX36	Dial Spacer					
47	1	74412	MX44	Locating Dowel					
48	1	74415	MX45-S	Feed Finger Spring					
49	1	74416	MX47-S	Cam (1 5/8" Down stroke)					
50	1	74417	MX48-S	Cam (1 1/8" Up Stroke)					
51	1	74418	MX49	Tool Retainer					
52	3	74419	MX50	Safety Pivot Pin					
53	2	74420	MX52	Pivot Pin					
54	1	74425	MX84-S	Brake Cam					
55	1	74426	MX85-S	Cam Pivot Pin					
56	1	74428	MX86-S	Brake Shoe					
57	1	75915	MX87-1-S	Lift Arm					
58	1	74430	MX88-S	Lever					
59	1	74614	MX90-S	Spring Bracket					
60	1	72310	MX104	Wave Disc Spring					
61	2	75083	Irving 3100-18	External Retaining Ring					
62	2	77322	LC-045E-10-M	Spring					
63	1	74611	LE-037CD-6	Extension Spring					
64	2	70739	McMaster-Carr #3126A53	Spring Plunger					
65	2	72519	McMaster-Carr #98029A043	#8 Hardened Washer					
66	1	74447	McMaster-Carr #98296A109	Expansion Pin (1/16 x 1/2")					
67	2	73785	SPI 99-602-5	#10 Black Knurled Knob					
68	2	74578	4-034-875	Spring					

**NOTE: ITEMS MARKED IN BOLD TEXT ARE HIGH WEAR ITEMS**



**Assembly Drawing and Bill of Materials**

Applicator Type:  
Terminal: RE125L\_PN125L  
B.O.M. #: 79295

**Section 5**

**NOTE:**  
(1) Items marked in bold text are high wear items.  
(2) Use OEM replacement tooling only.  
(3) Recommended machine speed for automatic equipment is a maximum of 3500 parts per hour.

ITEM NO.	PART NO.	DESCRIPTION	MATERIAL SPECIFICATION	QTY.	REVISION
See Parts List					
RE125L/PN125L					
FINISH: USED ON					
SCALE: 1:2.2					
DATE: _____					
DRAWN BY: _____					
DATE: _____					
DATE: _____					
DATE: _____					