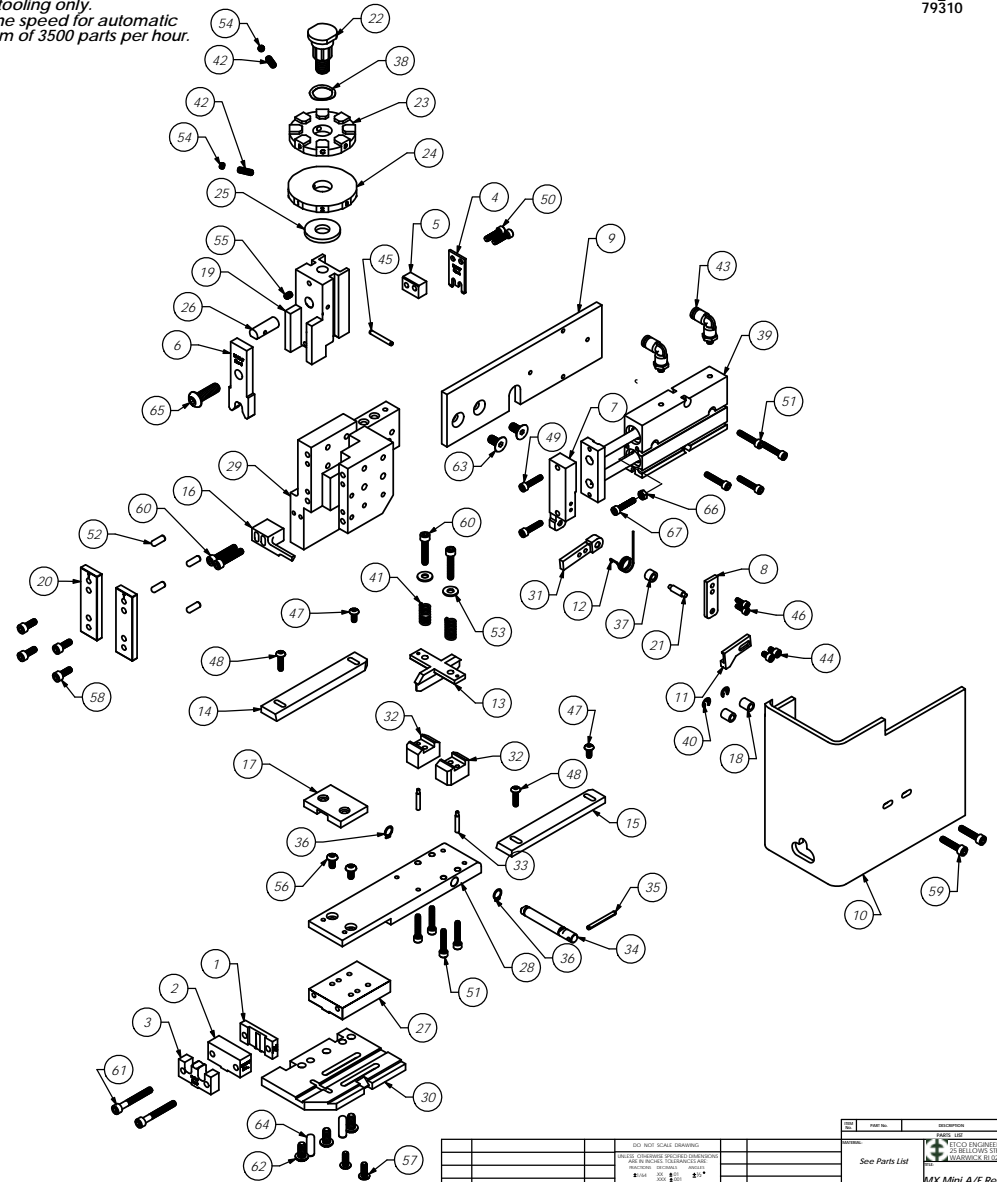


Parts List				
Item No.	Part Code	Part No.	Description	Defa ult/O TY.
1	63221	8-3147	Rear Cut-off Die	1
2	63220	8A-3147	Front Cut-off Die	1
3	63217	9-3147	Wire Anvil	1
4	63222	12-3147	Cut-off	1
5	63223	12A-3147	Cut-off Punch Spacer	1
6	63219	13-3147	Wire Rolling Tool	1
7	77640	26-3087	Feed Finger Adapter	1
8	77641	26A-3087	Feed Finger Cover Plate	1
9	63289	35A-3147	Air Cylinder Support Bracket	1
10	71223	199-3001G-2	Guard	1
11	63238	303-3147	Feed Finger	1
12	71128	307-87	Feed Finger Spring	1
13	63237	403-3147	Brake Shoe	1
14	63233	500-3147	Left Guide Rail	1
15	63234	1000-3147	Right Guide Rail	1
16	63290	1600A-3147	Stripper	1
17	63235	1600-3147	Hold Down	1
18	74491	GS-375	Guard Spacer	2
19	74343	MX3	Ram	1
20	74352	MX11	Gib	2
21	74356	MX12	Feed Finger Pivot Pin	1
22	74407	MX33	Mounting Post	1
23	63291	34-3147	Wire Crimp Dial Blank	1
24	74409	MX35	Insulation Dial	1
25	77605	MX36-135	Spacer Washer	1
26	74412	MX44	Locating Dowel	1
27	74908	MX54-R	Slide Support	1
28	74816	MX55-R	Feed Plate	1
29	74909	MX58-R	Frame	1
30	63241	200-3147	Baseplate	1
31	63239	MX73-R-4	Feed Arm	1
32	74821	MX92-R	Brake Support	2
33	74822	MX93-R	Lifter	2
34	74823	MX94-R	Brake Shaft	1
35	74825	MX96-R	Brake Handle	1
36	74827	MX97-R	Retaining Ring	2
37	72286	MX99-R-1	Spacer	1
38	72310	MX104	Wave Disc Spring	1
39	77647	HIBDAM-16-1.5	Twin Rod Air Cyl.	1
40	75083	Irving 3100-18	External Retaining Ring	2
41	75342	LC-045E-6-M	Brake Spring	2
42	70739	McMaster-Carr #3126A53	Spring Plunger	2
43	62169	Pisco PL156-U10U	Ø5/32" x 10-32 Elbow Fitting, White	2
44	63163	8-32_25sh	#8-32 x 1/4" Socket Hd Cap Screw	2
45	62040	1.8_1.00rp	1/8" x 1" Roll Pin	1
46	63209	6-32_38sh	#6-32 x 3/8" Socket Hd Cap Screw	2
47		8-32_38bh	#8-32 x 3/8" Button Hd Cap Screw	2
48		8-32_62bh	#8-32 x 5/8" Button Hd Cap Screw	2
49		8-32_75sh	#8-32 x 3/4" Socket Hd Cap Screw	2
50	63162	8-32_63sh	#8-32 x 5/8" Socket Hd Cap Screw	2
51		8-32_88sh	#8-32 x 7/8" Socket Hd Cap Screw	8
52	63158	3.16_50dp	Ø 3/16" x 1/2" Dowel Pin	4
53		10fw-a	#10A Flatwasher	2
54		10-32_13hl	#10-32 x 1/8" Hollow Lock Socket Hd Set Screw	2
55	63054	10-32_25ss	#10-32 x 1/4" Socket Hd Set Screw	2
56	78993	10-32_38bh	#10-32 x 3/8" Button Hd Cap Screw	2
57		10-32_50bh	#10-32 x 1/2" Button Hd Cap Screw	2
58	63056	10-32_50sh	#10-32 x 1/2" Socket Hd Cap Screw	4
59		10-32_88sh	#10-32 x 7/8" Socket Hd Cap Screw	2
60	63155	10-32_1.00sh	#10-32 x 1" Socket Hd Cap Screw	4
61		10-32_1.50sh	#10-32 x 1 1/2" Socket Hd Cap Screw	2
62	63632	1.4-20_50bh	1/4-20 x 1/2" Button Hd Cap Screw	3
63		1.4-20_50fh	1/4-20 x 1/2" Flat Hd Cap Screw	2
64		1.4_75dp	1/4" x 3/4" Dowel Pin	2
65	63055	5.16-18_1.00bh	5/16-18 x 1" Button Hd Cap Screw	1
66		M4x0.7th	M4 x .7 Hex Nut	1
67		M4x0.7_20.0sh	M4 x 20mm Socket Hd Cap Screw	1

NOTE:
(1) Items marked in bold text are high wear items.
(2) Use OEM replacement tooling only.
(3) Recommended machine speed for automatic equipment is a maximum of 3500 parts per hour.



DT10E_DT15E
79310

REV	REV	REV	REV	REV	REV
1	2	3	4	5	6
DESCRIPTION	DESCRIPTION	DESCRIPTION	DESCRIPTION	DESCRIPTION	DESCRIPTION
NO. OF SHEETS	NO. OF SHEETS	NO. OF SHEETS	NO. OF SHEETS	NO. OF SHEETS	NO. OF SHEETS
1	1	1	1	1	1
TITLE	TITLE	TITLE	TITLE	TITLE	TITLE
DT10E/A5E	DT10E/A5E	DT10E/A5E	DT10E/A5E	DT10E/A5E	DT10E/A5E
DATE	DATE	DATE	DATE	DATE	DATE
12/6/2012	12/6/2012	12/6/2012	12/6/2012	12/6/2012	12/6/2012
DESIGNED BY	DESIGNED BY	DESIGNED BY	DESIGNED BY	DESIGNED BY	DESIGNED BY
CHECKED BY	CHECKED BY	CHECKED BY	CHECKED BY	CHECKED BY	CHECKED BY
APPROVED BY	APPROVED BY	APPROVED BY	APPROVED BY	APPROVED BY	APPROVED BY