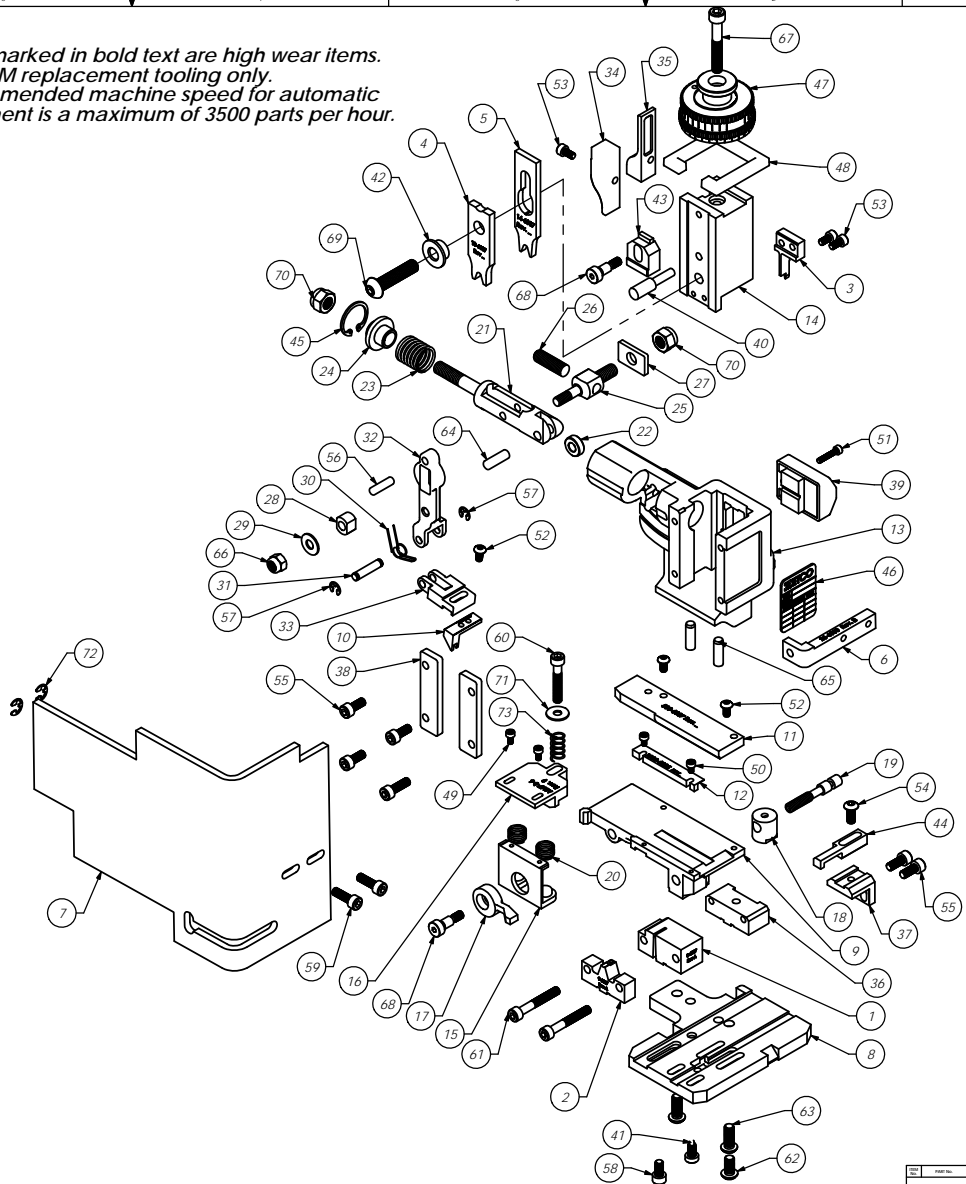


Item No.	Part Code	Part No.	Description	QTY.
1	63245	8-6037	Cut-off Die	1
2	63262	9-6037	Insulation Anvil	1
3	63242	12-6037	Cut-off Punch	1
4	63243	13-6037	Wire Rolling Tool	1
5	63244	14-6037	Insulation Rolling Tool	1
6	61626	26-6000	Guard Bracket	1
7	76403	199-3005	Safety Guard	1
8	63264	200-6037	Base Plate	1
9	63268	250-6037	Feed Plate	1
10	63269	303-6037	Feed Finger	1
11	63265	500-6037	Rear Guide	1
12	63064	1000-6035	Front Guide	1
13	61542	MM1-S	Frame	1
14	61545	MM3-S	Plunger	1
15	61736	MM7-S-1	Brake	1
16	62938	MM7-S-6	Brake Shoe	1
17	61550	MM8-S	Brake Lever	1
18	61551	MM9-S	Adjustment Screw Retainer	1
19	61552	MM10-S	Adjustment Screw	1
20	61553	MM11-S	Brake Spring	2
21	61554	MM12	Adjustable Feed Piston	1
22	61555	MM13	Cam Roller	1
23	61556	MM14	Piston Spring	1
24	61557	MM15	Spring Plate	1
25	61558	MM16	Feed Adjustment Block	1
26	61559	MM17	Feed Adjustment Screw	1
27	61560	MM18	Retainer	1
28	61561	MM19	Guide Block	1
29	61562	MM20	Feed Washer	1
30	61563	MM21	Feed Finger Spring	1
31	61564	MM22	Feed Finger Shaft	1
32	61565	MM23	Feed Arm	1
33	61566	MM24	Feed Finger Retainer	1
34	61573	MM31	Post-feed Cam	1
35	61574	MM32	Pre-feed Cam	1
36	61581	MM37-S	Tool Block	1
37	62703	MM38-S-1	Backup Block	1
38	61583	MM39	Gib	2
39	61585	MM43	Counter Ass'y.	1
40	61586	MM44	Locator Pin	1
41	61588	MM47	Dog Screw	1
42	61870	MM49-3	Tool Holder	1
43	61590	MM48	IRT Adjustment Block	1
44	62850	MM52-S	Stripper/Wire Stop	1
45	61595	MM56	Retaining Ring	1
46	61598	MM59	ID Plate	1
47	61596	MM57	Continuous Regulation Head Assembly	1
48	61597	MM58	Protection Spacer	1
49	<b>M3x0.5_6.0sh</b>	<b>M3 x 0.5 x 6mm Socket Hd Cap Screw</b>	<b>2</b>	
50	<b>M3x0.5_5.0sh</b>	<b>M3 x 5mm Socket Hd Cap Screw</b>	<b>2</b>	
51	<b>M3x0.5_16.0sh</b>	<b>M3 x 0.5 x 16mm Socket Hd Cap Screw</b>	<b>1</b>	
52	<b>M4x.7_8.0bh</b>	<b>M4 x .7 x 8mm Button Hd Cap Screw</b>	<b>3</b>	
53	<b>M4x0.7_8.0sh</b>	<b>M4 x .7 x 8.0 Socket Hd Cap Screw</b>	<b>3</b>	
54	<b>B18.3.4M - 8 x 1.25 x 10 SBHCS --S</b>	<b>Button Hd. Cap Screw</b>	<b>1</b>	
55	<b>M5x.8_12.0sh</b>	<b>M5 x .8 x 12mm Socket Hd Cap Screw</b>	<b>5</b>	
56	<b>M5_18.0dp</b>	<b>M5 x 18mm Dowel Pin</b>	<b>1</b>	
57	<b>M5_M3.9err</b>	<b>M5 External Retaining Ring</b>	<b>2</b>	
58	63521	<b>M5x.8_10.0sh</b>	<b>M5 x .8 x 10mm Socket Hd Cap Screw</b>	<b>1</b>
59	<b>M5x.8_16.0sh</b>	<b>M5 x .8 x 16mm Socket Hd Cap Screw</b>	<b>3</b>	
60	<b>M5x.8_30.0sh</b>	<b>M5 x .08 x 30mm Socket Hd Cap Screw</b>	<b>1</b>	
61	<b>M5x.8_35.0sh</b>	<b>M5 x .08 x 35mm Socket Hd Cap Screw</b>	<b>2</b>	
62	<b>M6x1.0_12.0bh</b>	<b>M6 x 1.0 x 12mm Button Hd Cap Screw</b>	<b>1</b>	
63	<b>M6x1.0_16.0bh</b>	<b>M6 x 1.0 x 16mm Button Hd Cap Screw</b>	<b>2</b>	
64	<b>M6_18dp</b>	<b>M6 x 18mm Dowel Pin</b>	<b>1</b>	
65	<b>M6_20dp</b>	<b>M6 x 20mm Dowel Pin</b>	<b>2</b>	
66	<b>M6 ln</b>	<b>M6 Lock Nut</b>	<b>1</b>	
67	<b>M6x1.0_40.0sh</b>	<b>M6 x 1.0 x 40mm Socket Hd Cap Screw</b>	<b>1</b>	
68	<b>M6_10shss</b>	<b>M6 x 10mm Socket Hd Shoulder Screw</b>	<b>2</b>	
69	62092	<b>M8 x 1.25_35.0bh</b>	<b>M8 x 1.25 x 35mm Button Hd Cap Screw</b>	<b>1</b>
70	<b>M8 ln</b>	<b>M8 Lock Nut</b>	<b>2</b>	
71	<b>10fw</b>	<b>#10 Flatwasher</b>	<b>1</b>	
72	72069	McMaster Carr #98407A122	#10 E-Style Retaining Ring	2
73	61897	LC-040-E6	Brake Spring	1

**NOTE:**

- (1) Items marked in bold text are high wear items.
- (2) Use OEM replacement tooling only.
- (3) Recommended machine speed for automatic equipment is a maximum of 3500 parts per hour.



R180  
79312

Approved For Tooling 7/5/2012

REV	REVISION	ISSUED BY	DATE	APPROVED BY	DATE
1					

NO IMP SCALE DRAWING		ALL DIMENSIONS UNLESS OTHERWISE SPECIFIED ARE IN INCHES	
DIMENSIONS ARE TO BE TAKEN FROM THE CENTERLINE UNLESS OTHERWISE SPECIFIED		ALL DIMENSIONS ARE TO BE TAKEN FROM THE CENTERLINE UNLESS OTHERWISE SPECIFIED	
SURFACE FINISH: RA 0.8 UNLESS OTHERWISE SPECIFIED		SURFACE FINISH: RA 0.8 UNLESS OTHERWISE SPECIFIED	
TOLERANCES: UNLESS OTHERWISE SPECIFIED		TOLERANCES: UNLESS OTHERWISE SPECIFIED	

See Parts List	R180	1	1	1	1
QUANTITY	DESCRIPTION	UNIT	ISSUED ON	ISSUED BY	ISSUED FOR
2	M6 x 1.0 x 12mm Button Hd Cap Screw		12/6/2012		