

ITEM NO.	Part Code	QTY.	PART NUMBER	DESCRIPTION
1	69867	1	8-CF156F	Die
2	69868	1	9-CF156F	Anvil
3	69866	2	12-CF156F	Cut-off Punch
4	60009	1	12H-CF156F	Blade Holder
5	67578	1	13-CS166	Wire Rolling Tool
6	73901	1	101-R	Top Casting
7	69859	2	169	Gib
8	63535	1	176R-SPB	Guard
9	60226	2	176S-090	Guard Spacer
10	72000	1	205R-CF156F	Base Plate
11	76986	1	250-244	Die Plate
12	76873	1	301-4	Shoulder Screw
13	69251	1	303-156FN	Feed Finger
14	66894	1	304-500	Feed Finger Spacer
15	77497	1	305-2	Feed Finger Arm
16	69206	1	306-TH-1	Feed Stop Arm
17	78092	1	307R-8	Feed Finger Spring
18	74400	1	308-Finished	Feed Shaft
19	74402	1	310	Cam Return Spring
20	74403	1	311	Roll Pin
21	74404	1	312	Cam Taper Pin
22	74495	1	401-Finished	Brake Shaft
23	74496	1	402	Spring Retainer
24	64596	1	403-95	Brake Body
25	74673	1	404_405as	Brake Cam Ass'y
26	74675	1	406	Cotter Pin
27	74676	1	407	Brake Spring
28	70951	1	408-1.045	Brake Spacer
29	69401	1	500-156FN	Rear Guide
30	69816	1	1000-156F	Front Guide
31	75716	1	1125R	Cam Roller Bracket
32	75719	1	1142	Cam Roller Bearing
33	69993	1	1600-156R-1	Wire Stop/Stripper
34	76191	1	1805	Stock Chute
35	60753	1	CS-TH156R	Slide Tool Holder
36	77634	1	CS-110	Plunger Shank
37	65333	1	CS-314R-156	Cam
38	77118	1	CS-11049R	Plunger
39	63506	1	McMaster-Carr #1095K11	1/8 NPT Grease Fitting
40	72069	2	McMaster Carr #98407A118	#8 E-Style Retaining Ring
41	62849	1	1.8_1.00dp	1/8" x 1" Dowel
42		2	1.8_.63dp	1/8" x 5/8" Dowel
43	77617	2	1.8_1.5dp	1/8" x 1-1/2" Dowel
44	63209	4	6-32_.38sh	#6-32 x 3/8" Socket Hd Cap Screw
45	63212	1	8-32_.25bh	#8-32 x 1/4" Button Hd Cap Screw
46	63163	2	8-32_.25sh	#8-32 x 1/4" Socket Hd Cap Screw
47		4	8-32_.28sh	#8-32 x 9/32" Socket Hd Cap Screw
48	63161	2	8-32_.38sh	#8-32 x 3/8" Socket Hd Cap Screw
49		5	8-32_.44sh	#8-32 x 7/16" Socket Hd Cap Screw
50	63164	2	8-32_.50sh	#8-32 x 1/2" Socket Hd Cap Screw
51	63472	4	10-32_.31sh	#10-32 x 5/16" Socket Hd Cap Screw
52	70925	1	10-32_.88sh	#10-32 x 7/8" Socket Hd Cap Screw
53	62307	1	10-32_1.12sh	#10-32 x 1 1/8" Socket Hd Cap Screw
54	63511	2	1.4-20_.25ssf	1/4-20 x 1/4" Socket Hd Set Screw
55	63492	1	1.4-20_.63sh	1/4-20 x 5/8" Socket Hd Cap Screw
56		1	1.4-20_.88sh	1/4-20 x 7/8" Socket Hd Cap Screw
57	62184	1	1.4-28_.50sh	1/4-28 x 1/2" Socket Hd Cap Screw
58	63510	2	1.4_1.00dp	1/4 x 1" Dowel Pin
59	63513	1	1.4-28_.75ss	1/4-28 x 3/4" Socket Set Screw
60	63512	1	1.4-28_jn	1/4-28 Jam Nut
61	62622	1	1.2_.75shss	1/2" x 3/4" Socket Hd Shoulder Screw

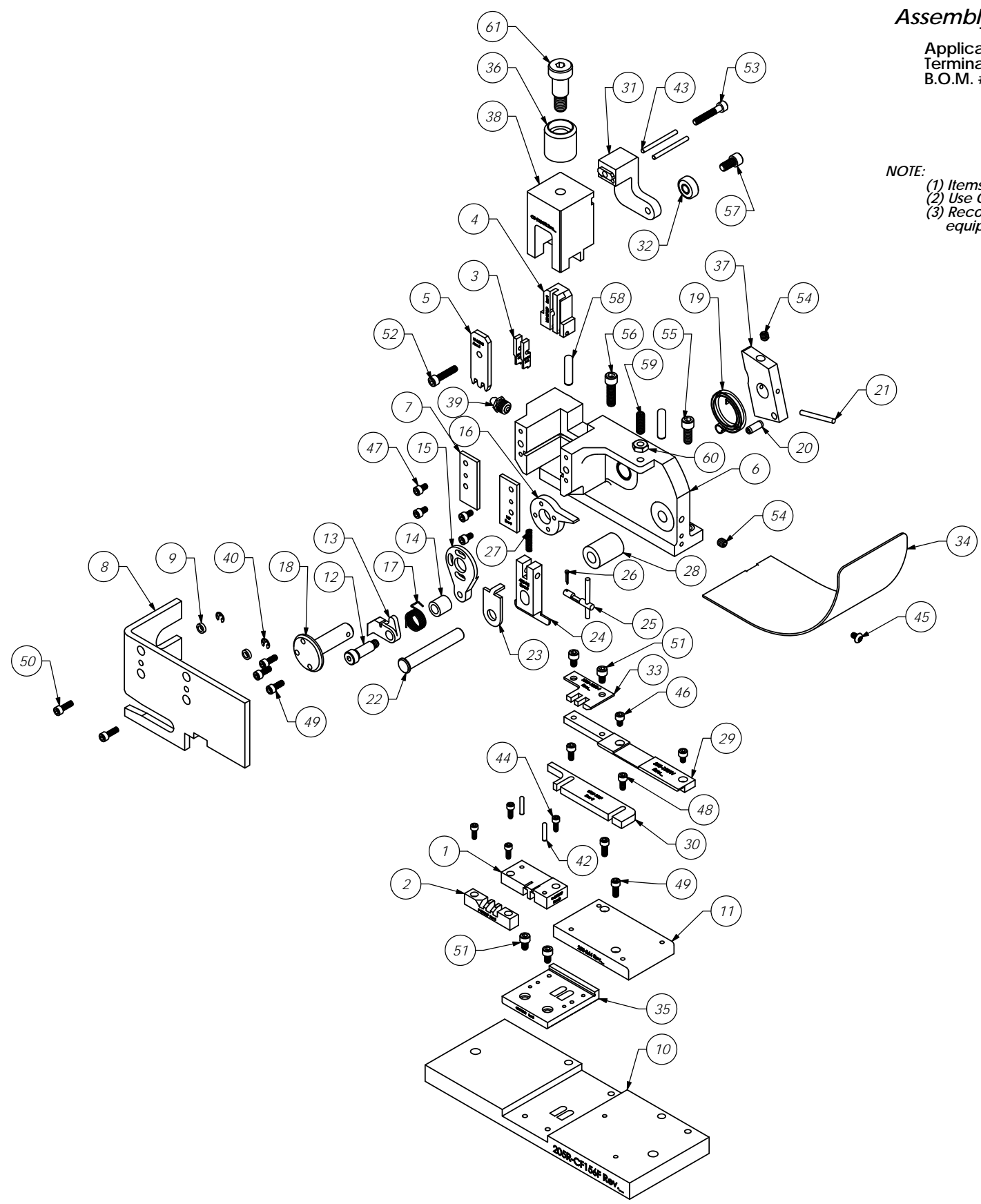
**NOTE: ITEMS MARKED IN BOLD TEXT ARE HIGH WEAR ITEMS**

### Assembly Drawing and Bill of Materials

Applicator Type: CP ECC Right to Left  
Terminal: CF156F Dual R-L  
B.O.M. #: 79314

### Section 5

- NOTE:**
- (1) Items marked in bold text are high wear items.
  - (2) Use OEM replacement tooling only.
  - (3) Recommended machine speed for automatic equipment is a maximum of 3500 parts per hour.



REV	DESCRIPTION	DATE	BY	CHKD	APP
A	ECR# 2397 SCJ	7/28/13			
LVL	REVISION	BY/DATE	DATE	DATE	DATE

ITEM NO.	PART NO.	DESCRIPTION	MATERIAL SPECIFICATION	QTY.	UOM.
See Parts List					
SURFACE FINISH: <input checked="" type="checkbox"/> ALL OVER UNLESS OTHERWISE SPECIFIED DIMENSIONS ARE IN INCHES. TOLERANCES ARE: FRACTIONS: DECIMALS ANGLES: ±1/64 XX ±.01 ±1/2° XXX ±.005 XXXX ±.002					
THE INFORMATION CONTAINED WITHIN THIS DRAWING IS THE SOLE PROPERTY OF ETICO. NO REPRODUCTION OR TRANSMISSION OF ANY INFORMATION HEREIN FOR ANY PURPOSES IS PERMITTED WITHOUT THE WRITTEN PERMISSION OF ETICO INCORPORATED. IS PROHIBITED.					
MATERIAL: See Parts List		PARTS LIST		ETICO ENGINEERED PRODUCTS 25 BELLEWS STREET WARWICK, RI 02886 (401) 467-2400	
HEAT TREAT:		FINISH:		CF156F Dual R-L	
SCALE: T:2		CAB FILE:		CF156F Dual R-L	
CHECKED BY: SCJ		DATE: 7/28/13		REV: A	
DRAWN BY: SCJ		DATE: 7/28/13		REV: D	