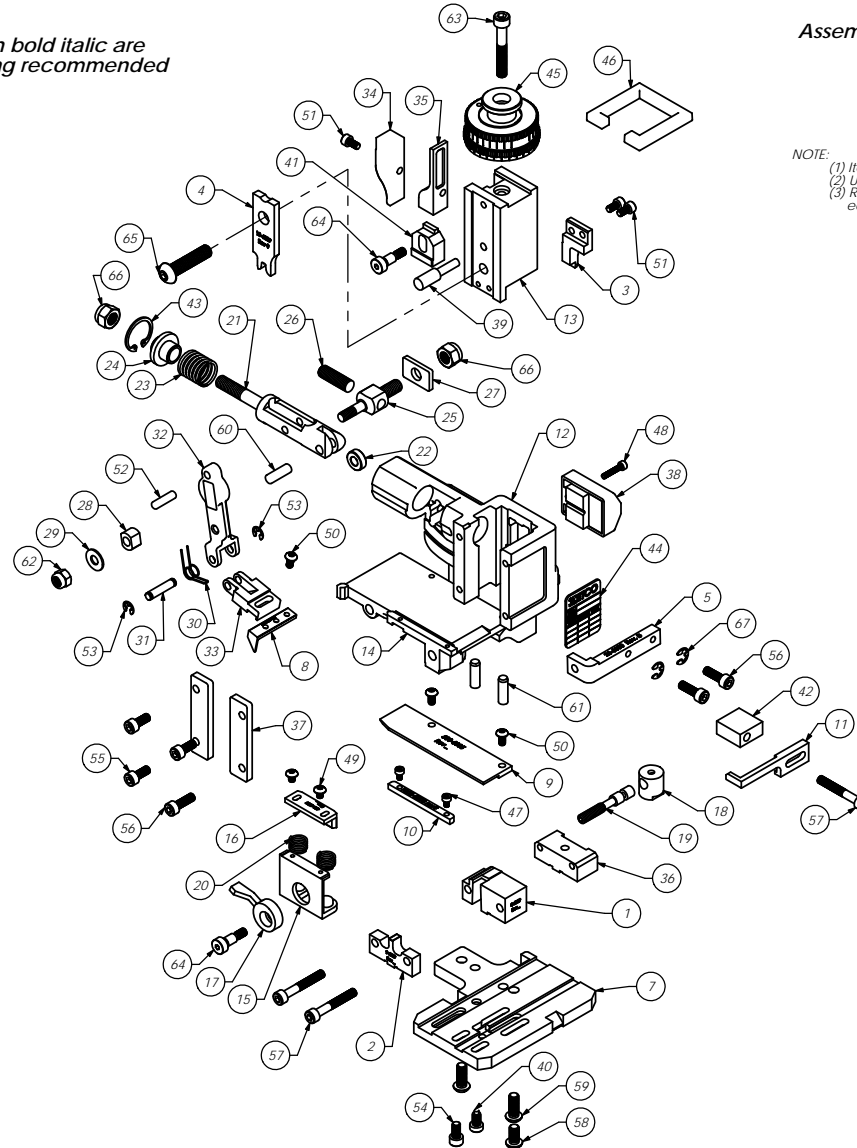


ITEM NO	Part Code	PART NUMBER	DESCRIPTION	QTY.
1	63333	8-6039	Cut-off Die	1
2	63331	9-6039	Anvil (12-16 AWG)	1
3	63334	12-6039	Cut-off Punch	1
4	63332	13-6039	WR Tool (12-16 AWG)	1
5	61626	26-6000	Guard Bracket	1
6	76403	199-3005	Safety Guard	1
7	63335	200-6039	Base Plate	1
8	61664	303-6003	Feed Finger	1
9	63063	500-6035	Rear Guide	1
10	61663	1000-6003	Front Guide	1
11	61661	1600-6003	Stripper	1
12	61542	MM1-S	Frame	1
13	61545	MM3-S	Plunger	1
14	63336	MM4-S-1	Feed Plate	1
15	61736	MM7-S-1	Brake	1
16	63101	403-6035	Brake Shoe	1
17	61550	MM8-S	Brake Lever	1
18	61551	MM9-S	Adjustment Screw Retainer	1
19	61552	MM10-S	Adjustment Screw	1
20	63102	MM11-1-S	Brake Spring	2
21	61554	MM12	Adjustable Feed Piston	1
22	61555	MM13	Cam Roller	1
23	61556	MM14	Piston Spring	1
24	61557	MM15	Spring Plate	1
25	61558	MM16	Feed Adjustment Block	1
26	61559	MM17	Feed Adjustment Screw	1
27	61560	MM18	Retainer	1
28	61561	MM19	Guide Block	1
29	61562	MM20	Feed Washer	1
30	61563	MM21	Feed Finger Spring	1
31	61564	MM22	Feed Finger Shaft	1
32	61565	MM23	Feed Arm	1
33	61566	MM24	Feed Finger Retainer	1
34	61573	MM31	Post-feed Cam	1
35	61574	MM32	Pre-Feed Cam	1
36	61581	MM37-S	Tool Block	1
37	61583	MM39	Gib	2
38	61585	MM43	Counter Ass'y.	1
39	61586	MM44	Locator Pin	1
40	61588	MM47	Dog Screw	1
41	61590	MM48	IRT Adjustment Block	1
42	61592	MM50-S	Stripper Spacer	1
43	61595	MM56	Retaining Ring	1
44	61598	MM59	ID Plate	1
45	61596	MM57	Continuous Regulation Head Assembly	1
46	61597	MM58	Protection Spacer	1
47		M3x0.5_5.0sh	M3 x 5mm Socket Hd Cap Screw	2
48		M3x0.5_16.0sh	M3 x 0.5 x 16mm Socket Hd Cap Screw	1
49	63103	M3x.6.0bh	M3 x 6mm Button Hd Cap Screw	2
50		M4x.7_8.0bh	M4 x .7 x 8mm Button Hd Cap Screw	3
51		M4x0.7_8.0sh	M4 x .7 x 8.0 Socket Hd Cap Screw	3
52		M5_18.0dp	M5 x 18mm Dowel Pin	1
53		M5_M3_9err	M5 External Retaining Ring	2
54	63521	M5x.8_10.0sh	M5 x .8 x 10mm Socket Hd Cap Screw	1
55		M5x.8_12.0sh	M5 x .8 x 12mm Socket Hd Cap Screw	3
56		M5x.8_16.0sh	M5 x .8 x 16mm Socket Hd Cap Screw	3
57		M5x.8_35.0sh	M5 x .8 x 35mm Socket Hd Cap Screw	3
58		M6x1.0_12.0bh	M6 x 1.0 x 12mm Button Hd Cap Screw	1
59		M6x1.0_16.0bh	M6 x 1.0 x 16mm Button Hd Cap Screw	2
60		M6_18dp	M6 x 18mm Dowel Pin	1
61		M6_20dp	M6 x 20mm Dowel Pin	2
62		M6_In	M6 Lock Nut	1
63		M6x1.0_40.0sh	M6 x 1.0 x 40mm Socket Hd Cap Screw	1
64		M6_10shss	M6 x 10mm Socket Hd Shoulder Screw	2
65	62092	M8 x1.25_35.0bh	M8 x 1.25 x 35mm Button Hd Cap Screw	1
66		M8_In	M8 Lock Nut	2
67	72069	McMaster Carr #98407A122	#10 E-Style Retaining Ring	2

Note:
1) Items marked in bold italic are high wear tooling recommended for stocking.



Assembly Drawing and Bill of Materials

Applicator Type: Mighty Mini
Terminal: PN187 GP5_GP8
B.O.M. #: 79317

Section 5

NOTE:
(1) Items marked in bold text are high wear items.
(2) Use OEM replacement tooling only.
(3) Recommended machine speed for automatic equipment is a maximum of 3500 parts per hour.

REV	DESCRIPTION	DATE	BY	CHKD
1	ISSUED FOR PRODUCTION			
2	REVISED TO ADD PARTS LIST			
3	REVISED TO ADD PARTS LIST			
4	REVISED TO ADD PARTS LIST			
5	REVISED TO ADD PARTS LIST			
6	REVISED TO ADD PARTS LIST			
7	REVISED TO ADD PARTS LIST			
8	REVISED TO ADD PARTS LIST			
9	REVISED TO ADD PARTS LIST			
10	REVISED TO ADD PARTS LIST			
11	REVISED TO ADD PARTS LIST			
12	REVISED TO ADD PARTS LIST			
13	REVISED TO ADD PARTS LIST			
14	REVISED TO ADD PARTS LIST			
15	REVISED TO ADD PARTS LIST			
16	REVISED TO ADD PARTS LIST			
17	REVISED TO ADD PARTS LIST			
18	REVISED TO ADD PARTS LIST			
19	REVISED TO ADD PARTS LIST			
20	REVISED TO ADD PARTS LIST			
21	REVISED TO ADD PARTS LIST			
22	REVISED TO ADD PARTS LIST			
23	REVISED TO ADD PARTS LIST			
24	REVISED TO ADD PARTS LIST			
25	REVISED TO ADD PARTS LIST			
26	REVISED TO ADD PARTS LIST			
27	REVISED TO ADD PARTS LIST			
28	REVISED TO ADD PARTS LIST			
29	REVISED TO ADD PARTS LIST			
30	REVISED TO ADD PARTS LIST			
31	REVISED TO ADD PARTS LIST			
32	REVISED TO ADD PARTS LIST			
33	REVISED TO ADD PARTS LIST			
34	REVISED TO ADD PARTS LIST			
35	REVISED TO ADD PARTS LIST			
36	REVISED TO ADD PARTS LIST			
37	REVISED TO ADD PARTS LIST			
38	REVISED TO ADD PARTS LIST			
39	REVISED TO ADD PARTS LIST			
40	REVISED TO ADD PARTS LIST			
41	REVISED TO ADD PARTS LIST			
42	REVISED TO ADD PARTS LIST			
43	REVISED TO ADD PARTS LIST			
44	REVISED TO ADD PARTS LIST			
45	REVISED TO ADD PARTS LIST			
46	REVISED TO ADD PARTS LIST			
47	REVISED TO ADD PARTS LIST			
48	REVISED TO ADD PARTS LIST			
49	REVISED TO ADD PARTS LIST			
50	REVISED TO ADD PARTS LIST			
51	REVISED TO ADD PARTS LIST			
52	REVISED TO ADD PARTS LIST			
53	REVISED TO ADD PARTS LIST			
54	REVISED TO ADD PARTS LIST			
55	REVISED TO ADD PARTS LIST			
56	REVISED TO ADD PARTS LIST			
57	REVISED TO ADD PARTS LIST			
58	REVISED TO ADD PARTS LIST			
59	REVISED TO ADD PARTS LIST			
60	REVISED TO ADD PARTS LIST			
61	REVISED TO ADD PARTS LIST			
62	REVISED TO ADD PARTS LIST			
63	REVISED TO ADD PARTS LIST			
64	REVISED TO ADD PARTS LIST			
65	REVISED TO ADD PARTS LIST			
66	REVISED TO ADD PARTS LIST			
67	REVISED TO ADD PARTS LIST			