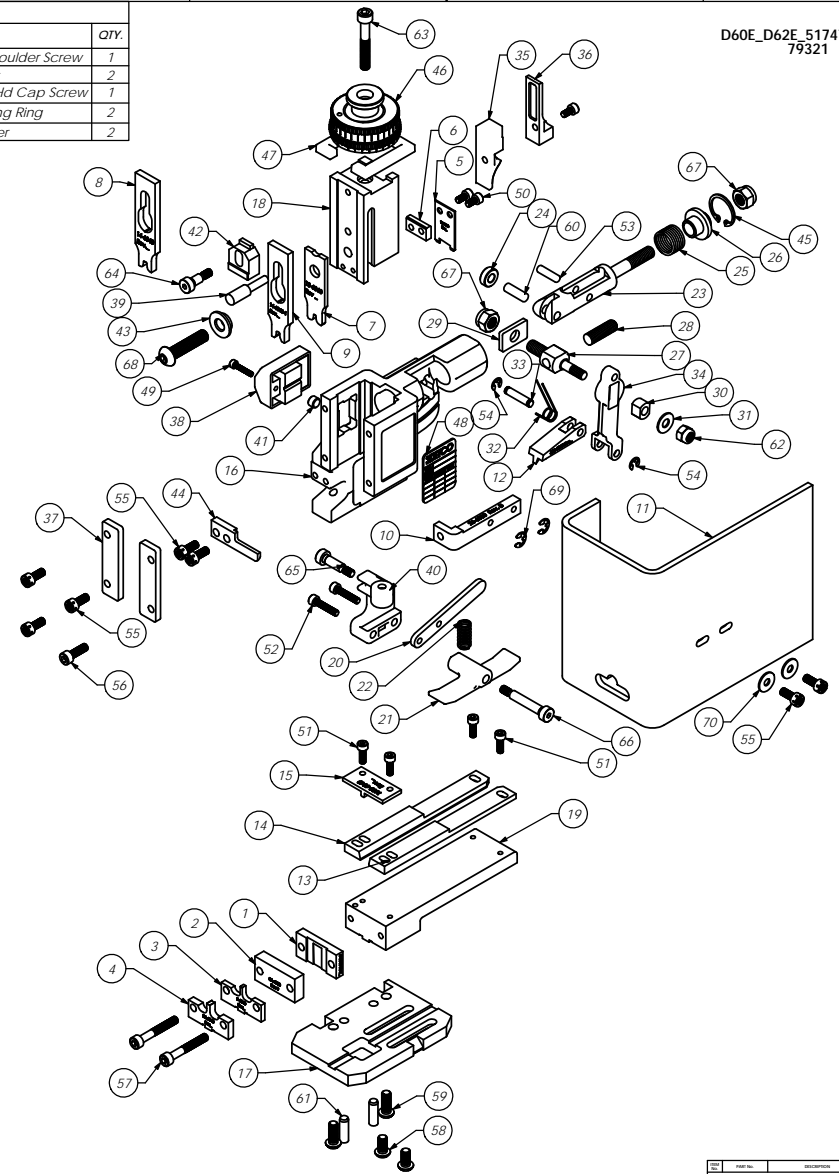


Parts List					Parts List				
Item No.	Part Code	Part No.	Description	QTY.	Item No.	Part Code	Part No.	Description	QTY.
1	63384	8-6040	Rear Cut-Off Die	1	66		<i>M6_30shss</i>	<i>M6 x 30mm Socket Hd Shoulder Screw</i>	1
2	62818	8A-6030	Front Cut-Off Die	1	67		<i>M8_In</i>	<i>M8 Lock Nut</i>	2
3	63388	9-6040	Conductor Anvil	1	68	62092	<i>M8 x 1.25_35.0bh</i>	<i>M8 x 1.25 x 35mm Button Hd Cap Screw</i>	1
4	63387	9A-6040	Ins. Anvil	1	69	72069	McMaster Carr #98407A12Z	<i>#10 E-Style Retaining Ring</i>	2
5	63390	12-6040	Cut-off Punch	1	70		<i>10fw</i>	<i>#10 Flatwasher</i>	2
6	63391	12A-6040	Cut-off spacer	1					
7	63385	13-6040	Wire Rolling Tool	1					
8	63386	14-6040	Insulation Rolling Tool	1					
9	63389	14-6040-1	Insulation Overlap Roll Tool	1					
10	61626	26-6000	Guard Bracket	1					
11	61715	199-6001	Guard	1					
12	63395	303-6040	Feed Finger	1					
13	63393	500-6040	Right Guide	1					
14	63394	1000-6040	Left Guide Rail	1					
15	63392	1600-6040	Guide Mounted Hold Down	1					
16	61600	MM1-R	Frame	1					
17	61601	MM2-R	Base Plate	1					
18	61602	MM3-R	Plunger	1					
19	61603	MM4-R	Feed Plate	1					
20	61605	MM8-R	Brake Lever	1					
21	61604	MM7-R	Brake	1					
22	61633	MM11-R	Brake Spring	1					
23	61554	MM12	Adjustable Feed Piston	1					
24	61555	MM13	Cam Roller	1					
25	61556	MM14	Piston Spring	1					
26	61557	MM15	Spring Plate	1					
27	61558	MM16	Feed Adjustment Block	1					
28	61559	MM17	Feed Adjustment Screw	1					
29	61560	MM18	Retainer	1					
30	61561	MM19	Guide Block	1					
31	61562	MM20	Feed Washer	1					
32	61563	MM21	Feed Finger Spring	1					
33	61564	MM22	Feed Finger Shaft	1					
34	61565	MM23	Feed Arm	1					
35	61573	MM31	Post-feed Cam	1					
36	61574	MM32	Pre-Feed Cam	1					
37	61583	MM39	Gib	2					
38	61585	MM43	Counter Ass'y.	1					
39	61586	MM44	Locator Pin	1					
40	61609	MM45-R	Brake Arm	1					
41	61587	MM46	Counter Button	1					
42	61590	MM48	IRT Adjustment Block	1					
43	61918	MM49-6	Tool Holder	1					
44	61611	MM51-R	Stripper	1					
45	61595	MM56	Retaining Ring	1					
46	61596	MM57	Continuous Regulation Head Assembly	1					
47	61597	MM58	Protection Spacer	1					
48	61598	MM59	ID Plate	1					
49		<i>M3x0.5_16.0sh</i>	<i>M3 x 0.5 x 16mm Socket Hd Cap Screw</i>	1					
50		<i>M4x0.7_8.0sh</i>	<i>M4 x .7 x 8.0 Socket Hd Cap Screw</i>	3					
51		<i>M4x0.7_12.0sh</i>	<i>M4 x 12mm Socket Hd Cap Screw</i>	4					
52		<i>M4x0.7_20.0sh</i>	<i>M4 x 20mm Socket Hd Cap Screw</i>	2					
53		<i>M5_18.0dp</i>	<i>M5 x 18mm Dowel Pin</i>	1					
54		<i>M5_M3.9err</i>	<i>M5 External Retaining Ring</i>	2					
55		<i>M5-.8_12.0sh</i>	<i>M5 x .8 x 12mm Socket Hd Cap Screw</i>	7					
56		<i>M5x.8_16.0sh</i>	<i>M5 x .8 x 16mm Socket Hd Cap Screw</i>	1					
57		<i>M5x.8_35.0sh</i>	<i>M5 x .08 x 35mm Socket Hd Cap Screw</i>	2					
58		<i>M6x1.0_12.0bh</i>	<i>M6 x 1.0 x 12mm Button Hd Cap Screw</i>	2					
59		<i>M6x1.0_16.0bh</i>	<i>M6 x 1.0 x 16mm Button Hd Cap Screw</i>	2					
60		<i>M6_18dp</i>	<i>M6 x 18mm Dowel Pin</i>	1					
61		<i>M6_20dp</i>	<i>M6 x 20mm Dowel Pin</i>	2					
62		<i>M6_In</i>	<i>M6 Lock Nut</i>	1					
63		<i>M6x1.0_40.0sh</i>	<i>M6 x 1.0 x 40mm Socket Hd Cap Screw</i>	1					
64		<i>M6_10shss</i>	<i>M6 x 10mm Socket Hd Shoulder Screw</i>	1					
65		<i>M6_16shss</i>	<i>M6 x 16mm Socket Hd Shoulder Screw</i>	1					

Note:
1) Items in Bold Italic are high wear tooling.
2) Use OEM replacement tooling only.



D60E_D62E_51747_51769
79321

REV	DESCRIPTION	DATE	BY	CHKD

NO SCALE DRAWING	DATE	BY	CHKD
DESIGN ENGINEER			
DESIGN CHECKER			
DESIGN APPROVER			
DESIGN RELEASE			
DESIGN CANCEL			
DESIGN REWORK			
DESIGN REWORK CHECK			
DESIGN REWORK APPROVE			
DESIGN REWORK RELEASE			
DESIGN REWORK CANCEL			
DESIGN REWORK REWORK			

