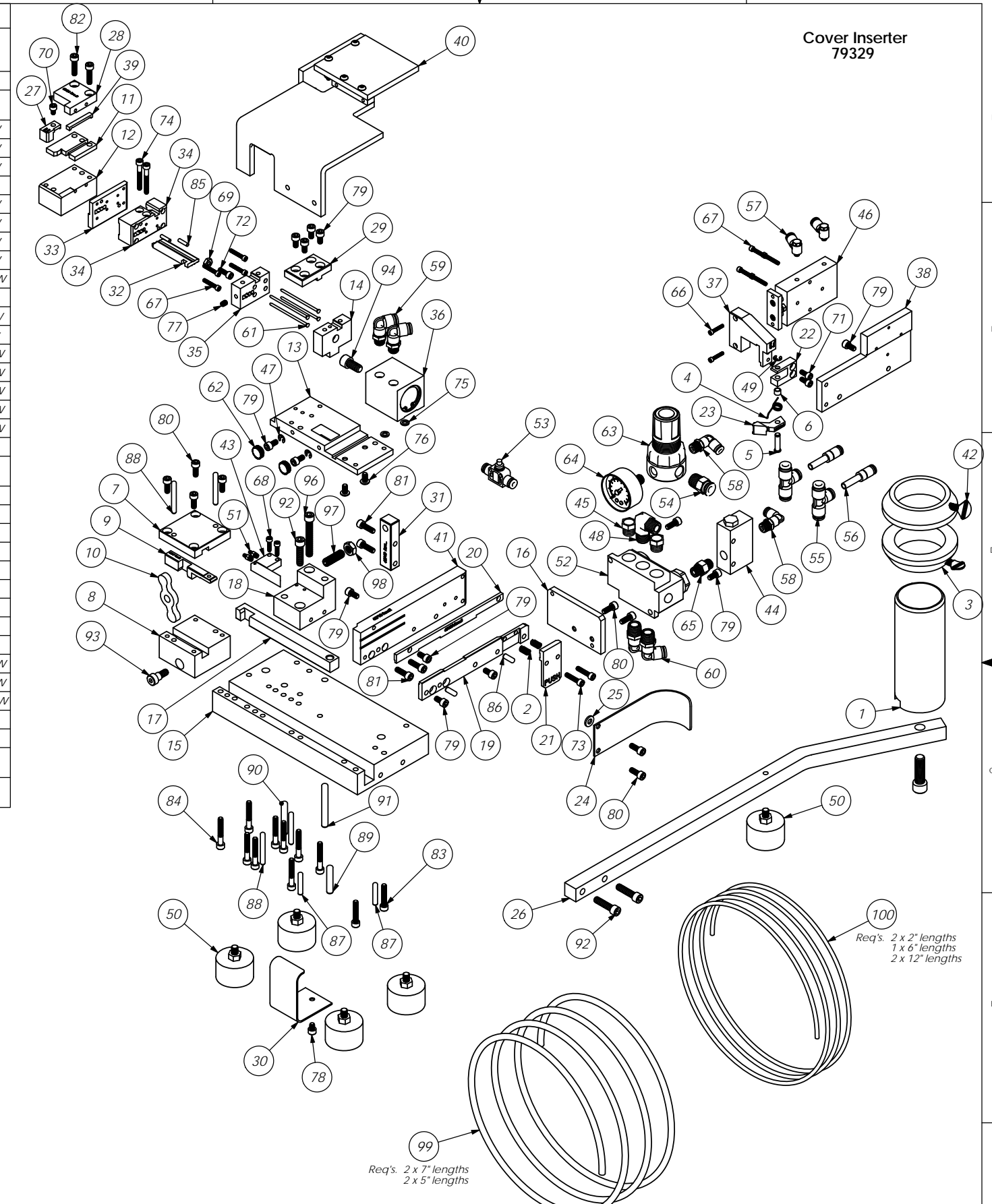


Parts List					Parts List				
Item No.	Part Code	QTY.	Part No.	Description	Item No.	Part Code	QTY.	Part No.	Description
1	75250	1	28-4	Reel Holder	64	63190	1	Watts 274Z160S	Air Pressure Gauge
2	73952	2	231	Stripper Spring	65	64123	1	1_8 x 1_8 NPT Straight Male	1/8" x 1/8" NPT Straight
3	73335	2	A47	Collar	66		2	4-40_63sh	#4-40 x 5/8" Socket Hd Cap Screw
<b>4</b>	<b>73451</b>	<b>1</b>	<b>ABX18</b>	<b>Feed Finger Spring</b>	67	63153	8	5-40_75sh	#5-40 x 3/4" Socket Hd Cap Screw
5	73452	1	ABX22	Feed Pin	68	63544	2	6-32_50sh	#6-32 x 1/2" Socket Hd Cap Screw
6	73441	1	ABX23	Feed Finger Spacer	69	63149	1	8-32hn	8-32 Hex Nut
7	63015	1	Slide Guide Block	Slide Guide Block	70	63163	1	8-32_25sh	#8-32 x 1/4" Socket Hd Cap Screw
8	63016	1	Slide Mounting Block	Slide Mounting Block	71	63161	2	8-32_38sh	#8-32 x 3/8" Socket Hd Cap Screw
9	63017	1	Hold Down Slide	Hold Down Slide	72	63164	1	8-32_50sh	#8-32 x 1/2" Socket Hd Cap Screw
10	63018	1	Rocker Arm	Rocker Arm	73	63787	2	8-32_75sh	#8-32 x 3/4" Socket Hd Cap Screw
11	63019	1	Nest	Nest	74	72096	2	8-32_1.25sh	#8-32 x 1 1/4" Socket Hd Cap Screw
12	63020	1	Nest Mounting Block	Nest Mounting Block	75	78517	2	10lw	#10 Lockwasher
13	63021	1	Mounting Plate	Mounting Plate	76	63531	2	10-24_38bh	#10-24 x 3/8" Button Hd Cap Screw
14	63022	1	Punch Holder to Cylinder Adapter Plate	Cyl. Adapt. Plate	77	63054	1	10-32_25ss	#10-32 x 1/4" Socket Hd Set Screw
15	63026	1	Base Plate	Base Plate	78	63473	1	10-32_25sh	#10-32 x 1/4" Socket Hd Cap Screw
16	63031	1	Control Valve Mounting Bracket	Control Valve Mounting Bracket	79	70110	12	10-32_38sh	#10-32 x 3/8" Socket Hd Cap Screw
17	63066	1	Push Rod	Push Rod	80	63056	9	10-32_50sh	#10-32 x 1/2" Socket Hd Cap Screw
18	63135	1	Feed Mtg. Block	Feed Mounting Block	81	70293	4	10-32_63sh	#10-32 x 5/8" Socket Hd Cap Screw
19	63137	1	Bottom Guide Rail	Bottom Guide Rail	82	63532	2	10-32_75sh	#10-32 x 3/4" Socket Hd Cap Screw
20	63138	1	Adjustable Guide Rail	Adjustable Guide Rail	83	63155	2	10-32_1.00sh	#10-32 x 1" Socket Hd Cap Screw
21	63139	1	Brake	Brake	84	77396	9	10-32_1.25sh	#10-32 x 1 1/4" Socket Hd Cap Screw
22	63140	1	Feed Finger Bracket	Feed Finger Bracket	85	63507	2	1.8_50dp	Ø 1/8" x 1/2" Dowel
<b>23</b>	<b>63141</b>	<b>1</b>	<b>Feed Finger</b>	<b>Feed Finger</b>	86	63158	2	3.16_50dp	Ø 3/16" x 1/2" Dowel Pin
24	63144	1	Stock Chute	Stock Chute	87	62010	2	3.16_1.00dp	3/16" x 1" Dowel Pin
25	63146	1	Stock Chute Spacer	Stock Chute Spacer	88		4	3.16_1.50dp	3/16 x 1 1/2" Dowel Pin
26	63148	1	Reel Arm	Reel Arm	89	63151	1	1.4_1.25dp	1/4 x 1 1/4 Dowel Pin
27	63403	1	Hold Down Slide Cap	Hold Down Slide Cap	90		1	1.4_1.50dp	1/4 x 1 1/2 Dowel Pin
28	63404	1	Housing Guide	Housing Guide	91	63160	1	1.4_2.00dp	1/4 x 2" Dowel Pin
29	63407	1	Cover Plate	Cover Plate	92	63168	3	1.4-20_1.00sh	1/4-20 x 1" Socket Hd Cap Screw
30	63409	1	Scrap Deflector	Scrap Deflector	93	63013	1	5.16_25shss	5/16 x 1/4" Shoulder Screw
31	63740	1	Feed Stop	Feed Stop	94	63156	1	5.16-24_62sh	5/16-24 x 5/8" Socket Hd Cap Screw
<b>32</b>	<b>63474</b>	<b>1</b>	<b>Blanking Punch_XP</b>	<b>Blanking Punch</b>	95	63169	1	3.8-16_1.25sh	3/8-16 x 1 1/4 Socket Hd Cap Screw
<b>33</b>	<b>63475</b>	<b>1</b>	<b>Blanking Die_XP</b>	<b>Blanking Die</b>	96		1	1.4-20_1.75 sh	1/4-20 x 1 3/4" Socket Hd Cap Screw
34	63476	1	Guide Block_XP	Guide Block	97		1	5.16-24_1.00ssf	5/16-24 x 1" Socket Hd Set Screw
35	63478	1	Punch Holder_XP	Punch Holder	98		1	5.16-24hn	5/16-24 Hex Nut
36	63522	1	Insertion Cylinder	Insertion Cylinder	99	62172	1	1_4 inch Polyurethane Air Line Tubing	1/4" Air Line Tubing
37	63738	1	Feed Arm (Twin Rod Cyl)	Feed Arm	100	62171	1	5_32 inch Polyurethane Air Line Tubing	5/32" Air Line Tubing
38	63739	1	Feed Cylinder Support	Feed Cylinder Support					
39	63772	1	Limit Switch Actuator	Limit Switch Actuator					
40	63781	1	Safety Guard	Safety Guard					
41	63793	1	Feed Track	Feed Track					
42	73336	2	Collar Screw	Reel Holder Collar Screw					
43	63773	1	Fabco-Air MSV-2	Limit Switch					
44	63774	1	Fabco-Air OS-1	One Shot Valve					
45	63530	2	Grainger Speedaire #1EJ16	Breather Vent					
46	63794	1	Humphrey #HTDA-10-1.0	Feed Cylinder					
47	75083	2	Irving 3100-18	External Retaining Ring					
48	63467	1	McMaster Carr #9171K22	90° 1/4-NPT Male x 1/4-NPT Male					
49	72069	1	McMaster Carr #98407A118	#8 E-Style Retaining Ring					
50	63014	5	McMaster Carr #9995T91	Leveling Foot					
51	63775	2	Mem-Co B2	Mem-Co B2 Fitting					
52	71372	1	NOVA I N2-SP	Mead Control Valve					
53	72408	1	Pisco JSU156	Ø5/32" In-line Flow Control					
54	64115	1	Pisco PC250-N2U	Ø1/4" x 1/4-NPT Straight Connector, Black					
55	71211	2	Pisco PE250	1/4" Union Tee					
56	70022	2	Pisco PGJ250-156	Reducer					
57	75691	2	Pisco PH156-U10U	5/32" x 10-32 Banjo Fitting					
58	73803	2	Pisco PL156-N1U	Ø5/32" x 1/8-NPT Elbow Fitting					
59	72352	2	Pisco PL250-N1U	Ø1/4" x 1/8-NPT Elbow Fitting, White					
60	76192	2	Pisco PL250-N2U	1/4" x 1/4" NPT Elbow Fitting					
<b>61</b>	<b>63028</b>	<b>4</b>	<b>Royal RQA .0920 x 2 1_8</b>	<b>Pilot Pin</b>					
62	63468	2	SPI 99-601-7	#8 Black Knurled Knob					
63	62083	1	Watts R364-02C	Regulator					

**Note:**  
**1) Items marked in "Bold Italic" are high wear tooling.**  
**2) Use OEM replacement tooling only.**



REV	DESCRIPTION	DATE	BY	CHECKED	DATE
F	ECR# 2688 SCJ	12/10/13	DO NOT SCALE DRAWINGS		
E	ECR# 2674 SCJ	12/02/13	UNLESS OTHERWISE SPECIFIED DIMENSIONS ARE IN INCHES. TOLERANCES ARE FRACTIONAL DECIMALS ANGLES		
D	Feed update/limit switch added	09/01/12	±1/64 XX ±.015 XXX ±.002		
C	Refer to Eng. Change Sheet	09/01/12			
B	Modified ins. cylinder	09/01/12	SURFACE FINISH: ✓ ALL OVER		
A	Added XP Tooling	2/7/012			
LVL	REVISION	BY/DATE			

ITEM NO.	PART NO.	DESCRIPTION	MATERIAL SPECIFICATION	QTY.	REMARKS
1	79329	Cover Inserter		1	

REV	DESCRIPTION	DATE	BY	CHECKED	DATE
D	Cover Inserter	26Aug10			