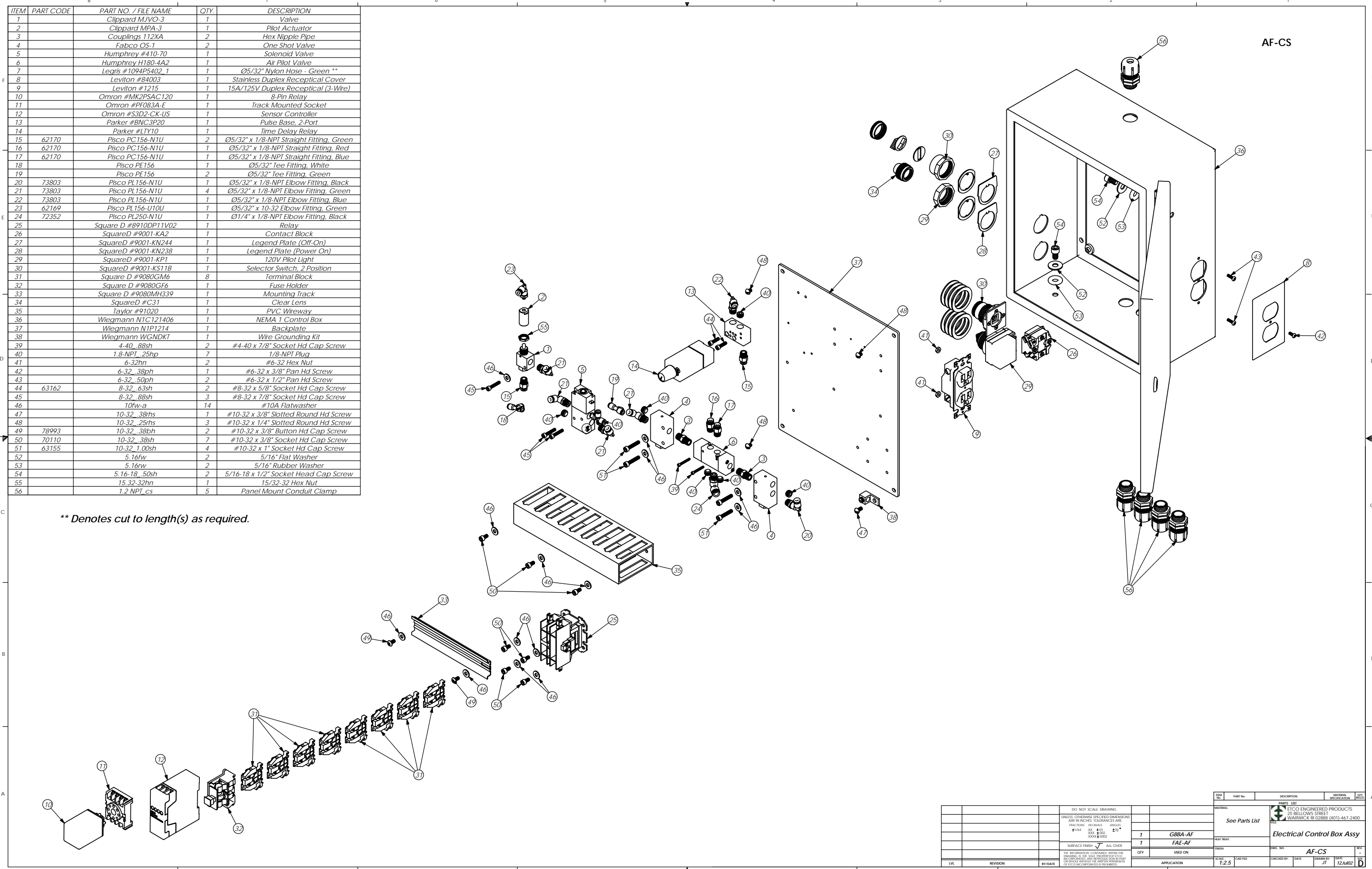


ITEM	PART CODE	PART NO. / FILE NAME	QTY.	DESCRIPTION
1		Clippard MJVO-3	1	Valve
2		Clippard MPA-3	1	Pilot Actuator
3		Couplings 112XA	2	Hex Nipple Pipe
4		Fabco OS-1	2	One Shot Valve
5		Humphrey #410-70	1	Solenoid Valve
6		Humphrey H180-4A2	1	Air Pilot Valve
7		Legris #1094P5402_1	1	Ø5/32" Nylon Hose - Green **
8		Leviton #84003	1	Stainless Duplex Receptical Cover
9		Leviton #1215	1	15A/125V Duplex Receptical (3-Wire)
10		Omron #MK2PSAC120	1	8-Pin Relay
11		Omron #PF083A-E	1	Track Mounted Socket
12		Omron #S3D2-CK-US	1	Sensor Controller
13		Parker #BNC3P20	1	Pulse Base, 2-Port
14		Parker #LTY10	1	Time Delay Relay
15	62170	Pisco PC156-N1U	2	Ø5/32" x 1/8-NPT Straight Fitting, Green
16	62170	Pisco PC156-N1U	1	Ø5/32" x 1/8-NPT Straight Fitting, Red
17	62170	Pisco PC156-N1U	1	Ø5/32" x 1/8-NPT Straight Fitting, Blue
18		Pisco PE156	1	Ø5/32" Tee Fitting, White
19		Pisco PE156	2	Ø5/32" Tee Fitting, Green
20	73803	Pisco PL156-N1U	1	Ø5/32" x 1/8-NPT Elbow Fitting, Black
21	73803	Pisco PL156-N1U	4	Ø5/32" x 1/8-NPT Elbow Fitting, Green
22	73803	Pisco PL156-N1U	1	Ø5/32" x 1/8-NPT Elbow Fitting, Blue
23	62169	Pisco PL156-U10U	1	Ø5/32" x 10-32 Elbow Fitting, Green
24	72352	Pisco PL250-N1U	1	Ø1/4" x 1/8-NPT Elbow Fitting, Black
25		Square D #8910DP11V02	1	Relay
26		SquareD #9001-KA2	1	Contact Block
27		SquareD #9001-KN244	1	Legend Plate (Off-On)
28		SquareD #9001-KN238	1	Legend Plate (Power On)
29		SquareD #9001-KP1	1	120V Pilot Light
30		SquareD #9001-KS11B	1	Selector Switch, 2 Position
31		Square D #9080GM6	8	Terminal Block
32		Square D #9080GF6	1	Fuse Holder
33		Square D #9080MH339	1	Mounting Track
34		SquareD #C31	1	Clear Lens
35		Taylor #91020	1	PVC Wireway
36		Wiegmann N1C121406	1	NEMA 1 Control Box
37		Wiegmann N1P1214	1	Backplate
38		Wiegmann WGNDKT	1	Wire Grounding Kit
39		4-40 .88sh	2	#4-40 x 7/8" Socket Hd Cap Screw
40		1/8-NPT .25hp	7	1/8-NPT Plug
41		6-32hn	2	#6-32 Hex Nut
42		6-32 .38ph	1	#6-32 x 3/8" Pan Hd Screw
43		6-32 .50ph	2	#6-32 x 1/2" Pan Hd Screw
44	63162	8-32 .63sh	2	#8-32 x 5/8" Socket Hd Cap Screw
45		8-32 .88sh	3	#8-32 x 7/8" Socket Hd Cap Screw
46		10fw-a	14	#10A Flatwasher
47		10-32 .38rsh	1	#10-32 x 3/8" Slotted Round Hd Screw
48		10-32 .25rsh	3	#10-32 x 1/4" Slotted Round Hd Screw
49	78993	10-32 .38bh	2	#10-32 x 3/8" Button Hd Cap Screw
50	70110	10-32 .38sh	7	#10-32 x 3/8" Socket Hd Cap Screw
51	63155	10-32 .100sh	4	#10-32 x 1" Socket Hd Cap Screw
52		5.16fw	2	5/16" Flat Washer
53		5.16rw	2	5/16" Rubber Washer
54		5.16-18 .50sh	2	5/16-18 x 1/2" Socket Head Cap Screw
55		15.32-32hn	1	15/32-32 Hex Nut
56		1.2 NPT. cs	5	Panel Mount Conduit Clamp

\*\* Denotes cut to length(s) as required.



AF-CS

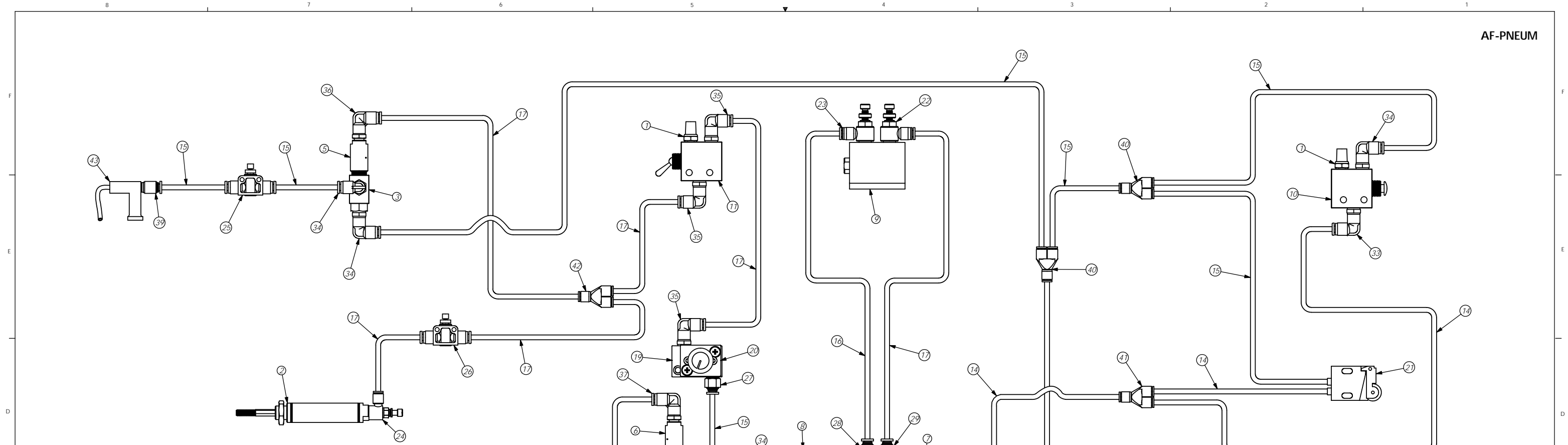
REV	REVISION	EY/DATE	DESCRIPTION	SCALE	DATE	BY	CHKD	APP
1			CBBA-AF	1:2.5				
1			FAE-AF					
1			USED ON					

ITEM NO.	PART NO.	DESCRIPTION	MATERIAL SPECIFICATION	QTY.	REMARKS
1	CBBA-AF	Electrical Control Box Assy		1	

DATE	BY	CHKD	APP
12/10/02	JT		



Item	Part Code	Part No./File Name	Description	QTY.
44		Watts C35-02FRLAHC	Cube Combination System	1
43		TAN-AF	Air Nozzle, Track	1
42	75323	Pisco PY156	Ø5/32" Y-Fitting, Blue	1
41	75323	Pisco PY156	Ø5/32" Y-Fitting, Black	1
40	75323	Pisco PY156	Ø5/32" Y-Fitting, Green	2
39		Pisco POC156-U10U	Ø5/32" x 10-32 Hex Holed Straight, Green	1
38	72352	Pisco PL250-N1U	Ø1/4" x 1/8-NPT Elbow Fitting, Black	1
37	62169	Pisco PL156-U10U	Ø5/32" x 10-32 Elbow Fitting, Green	1
36	62169	Pisco PL156-U10U	Ø5/32" x 10-32 Elbow Fitting, Blue	1
35	73803	Pisco PL156-N1U	Ø5/32" x 1/8-NPT Elbow Fitting, Blue	3
34	73803	Pisco PL156-N1U	Ø5/32" x 1/8-NPT Elbow Fitting, Green	7
33	73803	Pisco PL156-N1U	Ø5/32" x 1/8-NPT Elbow Fitting, Black	2
32		Pisco PE156	Ø5/32" Tee Fitting, Green	2
31		Pisco PE156	Ø5/32" Tee Fitting, White	1
30		Pisco PC250-N2U	Ø1/4" x 1/4-NPT Straight Connector, Black	1
29	62170	Pisco PC156-N1U	Ø5/32" x 1/8-NPT Straight Fitting, Blue	1
28	62170	Pisco PC156-N1U	Ø5/32" x 1/8-NPT Straight Fitting, Red	1
27	62170	Pisco PC156-N1U	Ø5/32" x 1/8-NPT Straight Fitting, Green	3
26	72408	Pisco JSU156	Ø5/32" In-line Flow Control	1
25	72408	Pisco JSU156	Ø5/32" In-line Flow Control	1
24		Pisco JSC156-U10U	Ø5/32" x 10-32 Speed Control	1
23		Pisco JNC156-N1U	Ø5/32" x 1/8-NPT Flow Control	1
22		Pisco JNC156-N1U	Ø5/32" x 1/8-NPT Flow Control	1
21	70425	Parker #PXC1M121	Limit Switch	1
20		Parker #LTY10	Time Delay Relay	1
19		Parker #BNC3P20	Pulse Base, 2-Port	1
18		Legris #1094P5601	Ø1/4" Nylon Tubing, Black	1
17		Legris #1094P0404	Ø5/32" Nylon Tubing, Blue	1
16		Legris #1094P0403	Ø5/32" Nylon Tubing, Red	1
15		Legris #1094P0402	Ø5/32" Nylon Tubing, Green	1
14		Legris #1094P0401	Ø5/32" Nylon Tubing - Black	1
13		Humphrey H180-4A2	Air Pilot Valve	1
12		Humphrey #410-70	Solenoid Valve	1
11	70426	Humphrey 31V	Air Valve, Single Throw	1
10	70427	Humphrey 31P	Air Valve, Spring Return	1
9		Fabco SCL-121-5	Slide Cylinder	1
8		Fabco OS-1	One Shot Valve	2
7		Couplings 112XA	Hex Nipple Pipe	2
6		Clippard MPA-3	Pilot Actuator	1
5		Clippard MPA-2	Pilot Actuator	1
4		Clippard MJVO-3	Valve	1
3	72318	Clippard MJV-3	3-Way Valve	1
2	70261	Bimba M-02-1.5-NR	Push Cylinder	1
1	62168	Allied P-18	1/8-NPT Exhaust Muffler	2
Item	Part Code	Part No./File Name	Description	QTY.

REV	REVISION	EVIDENCE	DATE	APPROVAL	SCALE	LEAD FILE	CHECKED BY	DATE	DRAWN BY	DATE	REV
1					None						1

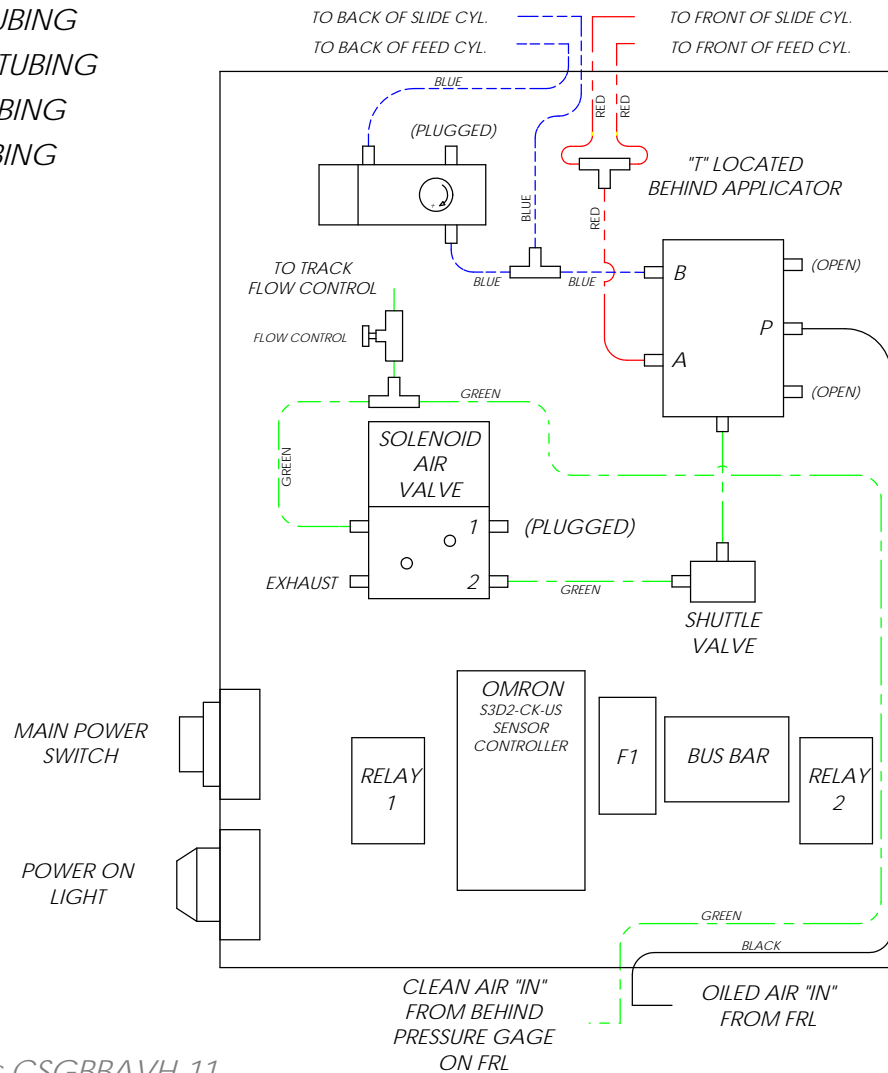
ITEM NO.	PART NO.	DESCRIPTION	MATERIAL SPECIFICATION	QTY.
1	GBBA-AF	ALL OVER		1
1	FAE-AF	USED ON		1

DATE	BY	DESCRIPTION
6/26/2012	JT	Pneumatic Schematic

# AF-PNEUM-OS

- $\phi$  1/4" BLACK TUBING
- - -  $\phi$  5/32" GREEN TUBING
- - -  $\phi$  5/32" BLUE TUBING
- - -  $\phi$  5/32" RED TUBING

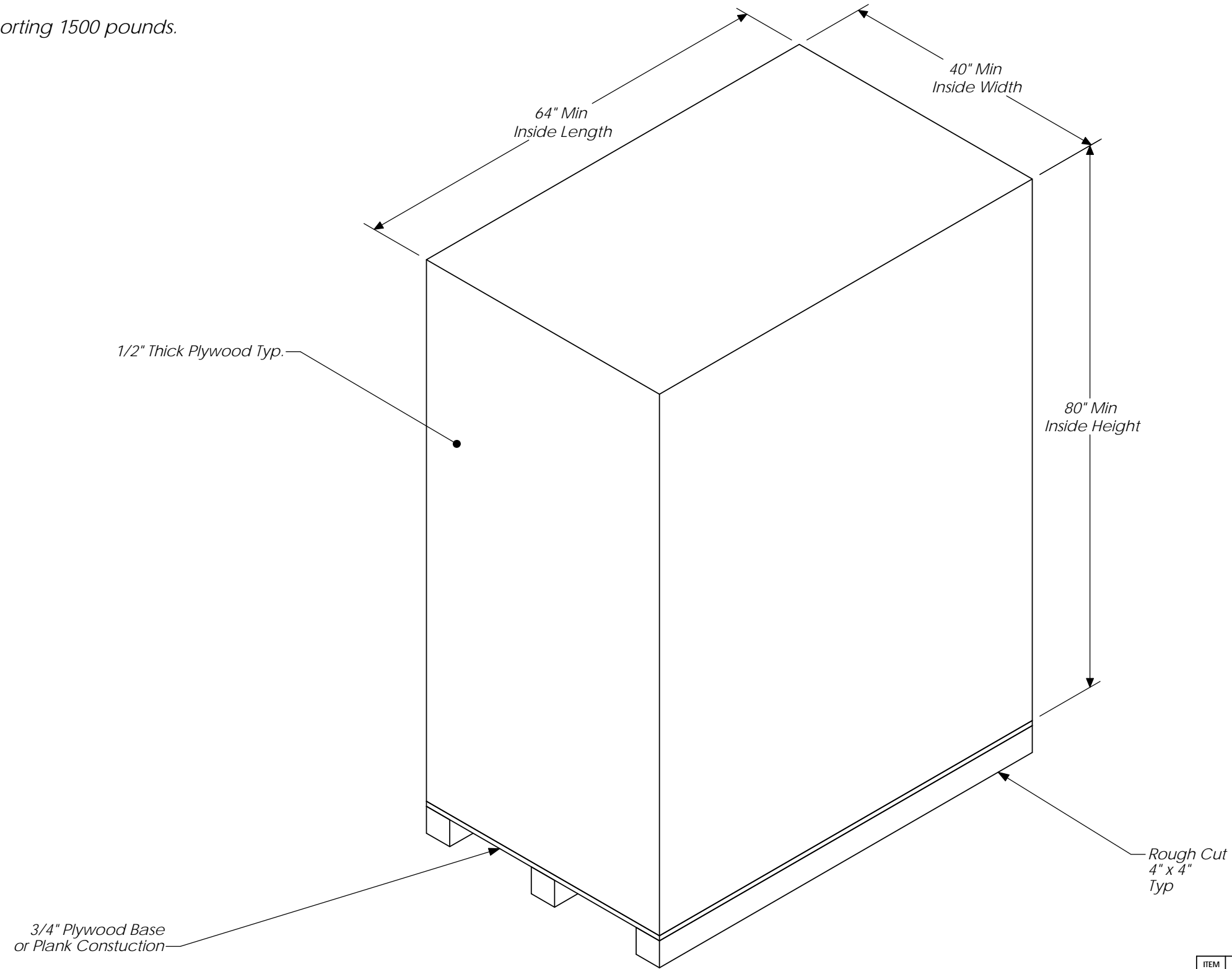


Note:  
Applicable to serial numbers CSGBBAVH-11  
thru CSGBBAVH-14 only.

ITEM No.	PART No.	DESCRIPTION	MATERIAL SPECIFICATION	QTY REQ'D
<b>PARTS LIST</b>				
<b>MATERIAL:</b>		<b>ETCO ENGINEERED PRODUCTS</b> 25 BELLOWS STREET WARWICK RI 02888 (401)-467-2400 TITLE:		
		<b>Pneumatic Schematic</b>		
<b>HEAT TREAT:</b>				
<b>FINISH:</b>		<b>DWG. NO.</b>		<b>REV.</b>
<b>SCALE:</b>	<b>CAD FILE:</b>	<b>CHECKED BY:</b>	<b>DATE:</b>	<b>SIZE</b>
<b>1:1</b>				<b>A</b>
<b>DO NOT SCALE DRAWING</b>				
UNLESS OTHERWISE SPECIFIED DIMENSIONS ARE IN INCHES. TOLERANCES ARE:				
FRACTIONS	DECIMALS	ANGLES		
$\pm 1/64$	XX $\pm 01$	$\pm 1/2^\circ$		
	.XXX $\pm 001$			
	.XXXX $\pm 0002$			
<b>SURFACE FINISH</b> $\checkmark$ <b>ALL OVER</b>		<b>See Note</b>		
<b>REQ'D</b>	<b>USED ON</b>	<b>P/N</b>		
<b>LVL</b>		<b>APPLICATION</b>		
<b>REVISION</b>	<b>BY/DATE</b>			
THE INFORMATION CONTAINED WITHIN THIS DRAWING IS THE SOLE PROPERTY OF ETCO INCORPORATED. ANY REPRODUCTION IN PART OR WHOLE WITHOUT THE WRITTEN PERMISSION OF ETCO INCORPORATED IS PROHIBITED.				

Note:  
Must be capable of supporting 1500 pounds.

**C-AF**

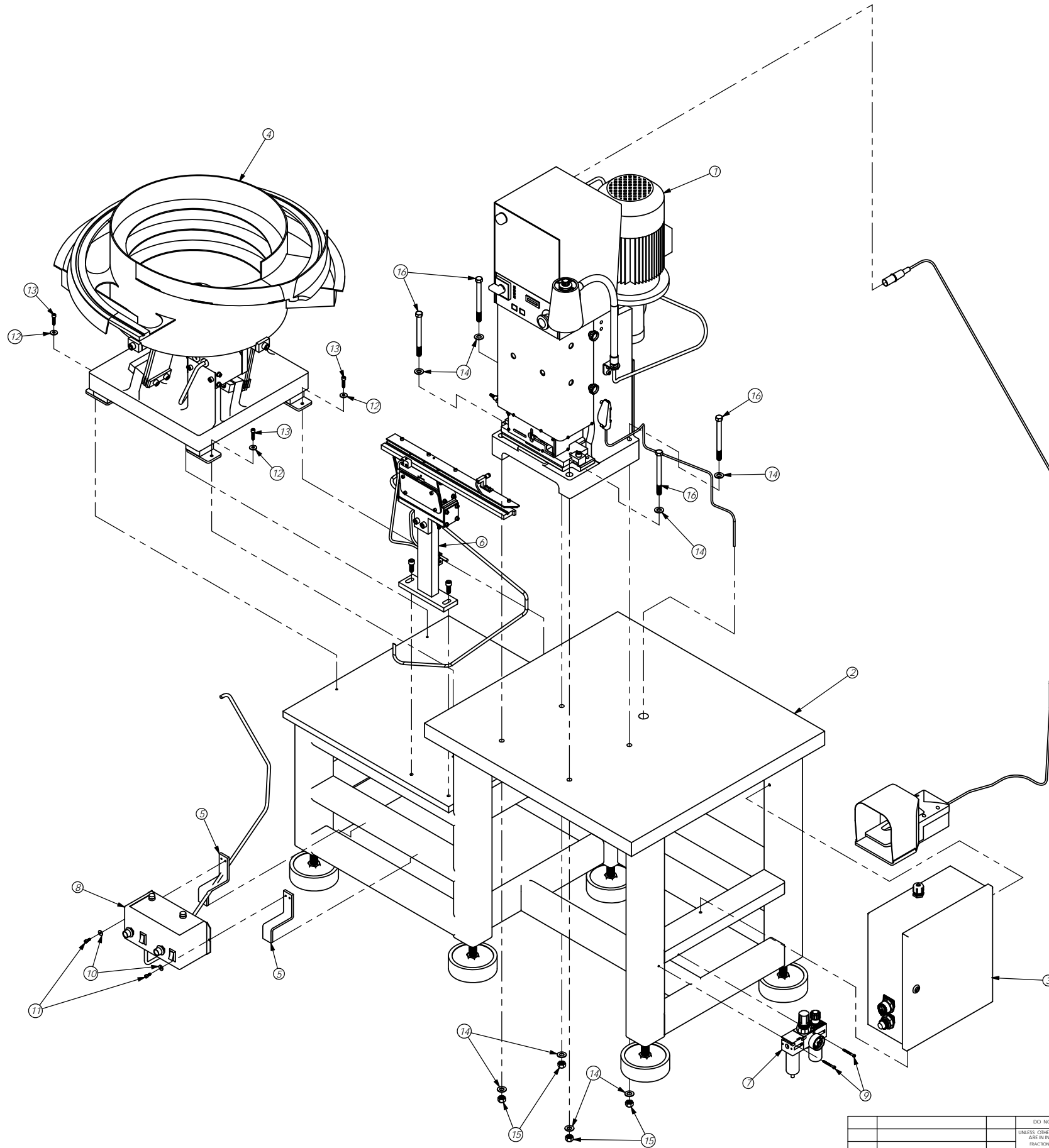


DO NOT SCALE DRAWING		
UNLESS OTHERWISE SPECIFIED DIMENSIONS ARE IN INCHES. TOLERANCES ARE:		
FRACTIONS	DECIMALS	ANGLES
±1/64	.XX ±.01	±1/2°
	.XXX ±.001	
	.XXXX ±.0002	
SURFACE FINISH $\checkmark$ ALL OVER		
THE INFORMATION CONTAINED WITHIN THIS DRAWING IS THE SOLE PROPERTY OF ETCO INCORPORATED. ANY REPRODUCTION IN PART OR WHOLE WITHOUT THE WRITTEN PERMISSION OF ETCO INCORPORATED IS PROHIBITED.		
LVL	REVISION	BY/DATE

ITEM No.	PART No.	DESCRIPTION	MATERIAL SPECIFICATION	QTY REQ'D
PARTS LIST				
MATERIAL:		ETCO ENGINEERED PRODUCTS 25 BELLOWS STREET WARWICK RI 02888 (401)-467-2400		
See Above		TITLE: <b>Packing Crate</b>		
HEAT TREAT:		DWG. NO. <b>C-AF</b>		
FINISH:		REV.		
SCALE: <b>1:14</b>	CAD FILE:	CHECKED BY:	DATE:	DRAWN BY: <b>JT</b> DATE: <b>22Jun04</b> SIZE <b>B</b>
APPLICATION				

Item	Part Code	Default/Qty	Part No./File Name	Description
1		1	T25-GBBA-AF	Press Assembly, GBBA-AF
2		1	201-AF	Mounting Bench
3		1	AF-CS	Electrical Control Box Assy
4		1	FB-G-AF	Feeder Bowl
5		2	MB-AF	Mtg. Bracket, Feed Control
6		1	VT-AF	Vibratory Track Assembly
7		1	Watts C35-02FRLAHC	Cube Combination System
8		1	Rodix FC-92	Bowl Feeder Control
9		2	8-32_1.50sh	#8-32 x 1 1/2" Socket Hd Cap Screw
10		2	10fw	#10 Flatwasher
11	63056	2	10-32_50sh	#10-32 x 1/2" Socket Hd Cap Screw
12		4	1.4fw	1/4" Flatwasher
13	63168	4	1.4-20_1.00sh	1/4-20 x 1" Socket Hd Cap Screw
14		8	7.16fw	7/16" Flat Washer
15		4	7.16-14hn	7/16-14 Hex Nut
16		4	7.16-14_5.0hh	7/16-14 x 5" Hex Bolt

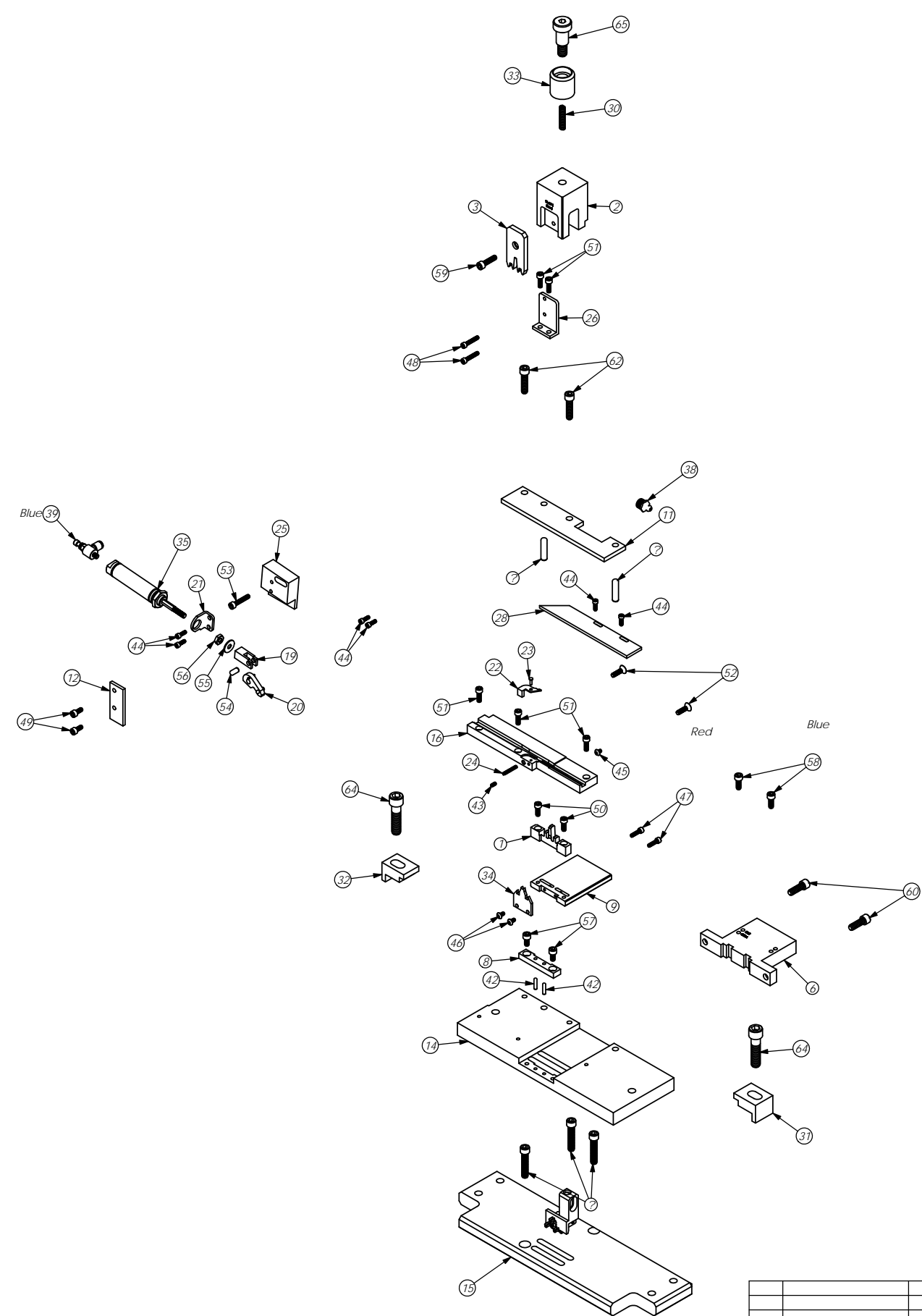
GBBA-AF



ITEM No.	PART No.	DESCRIPTION	MATERIAL SPECIFICATION	QTY.	REVISION
		DO NOT SCALE DRAWING			
		UNLESS OTHERWISE SPECIFIED DIMENSIONS ARE IN INCHES. TOLERANCES ARE FRACTIONAL DECIMALS ANGLES			
		1/64 .001 .002 .005 .010 .015 .020 .030 .040 .050 .060 .070 .080 .090 .100 .125 .150 .175 .200 .250 .300 .375 .450 .500 .625 .750 .875 1.000 1.250 1.500 1.750 2.000 2.500 3.000 3.500 4.000 4.500 5.000			
		SURFACE FINISH ALL OVER			
		THE INFORMATION CONTAINED WITHIN THIS DRAWING IS THE SOLE PROPERTY OF ETICO. NO REPRODUCTION OR TRANSMISSION OF THIS INFORMATION IN ANY FORM OR BY ANY MEANS, ELECTRONIC OR MECHANICAL, INCLUDING PHOTOCOPYING, RECORDING, OR BY ANY INFORMATION STORAGE AND RETRIEVAL SYSTEM, IS PERMITTED WITHOUT THE WRITTEN PERMISSION OF ETICO ENGINEERED PRODUCTS.			
		ETICO ENGINEERED PRODUCTS 25 BELLOWS STREET WARWICK, RI 02888 (401) 467-2400			
		Automatic Feed Press			
		GBBA			
		USED ON			
		SCALE: 1:6			
		APPROVAL			
		DATE: 6/26/2012			

ITEM	PART CODE	PART NO. / FILE NAME	QTY.	DESCRIPTION
1	60288	9-BRIDGE-AF	1	Anvil
2	61348	11-AF-1	1	Plunger
3	60045	13-BRIDGE	1	Wire Rolling Tool
4	60681	19-G-AF	1	Assembly Stop Tab
5	60918	22-G-AF	1	Proximity Switch Filler Plate
6		26-AF	1	Slide Cylinder Mounting Plate
7		27-AF	1	Slide Pusher Plate
8		28-G-AF	1	Slide Stop
9	60285	29-G-AF	1	Slide
10		101-AF	1	Casting
11		116-187-AF	1	Casting Spacer
12		169-L-AF	1	Left Gib
13		169-R-AF	1	Right Gib
14		205-G-AF	1	Base Plate
15		205-AP-G-AF	1	Adapter Plate
16	60374	250-G-AF	1	Die Plate
17	62835	301-AF	1	Slide Cylinder Screw
18	62834	302-AF	1	Slide Cylinder Washer
19	60339	303A-AF	1	Clevis Bracket
20	70338	303-G-AF	1	Feed Finger
21		305-AF	1	Cylinder Mount
22		306-AF	1	Feed Stop
23	60372	306A-AF	1	Feed Stop Pivot Pin
24	70373	307-AF	1	Feed Stop Spring
25		314-G-AF	1	Adj. Cylinder Mount Brkt
26	60919	315-AF	1	Cylinder Release Switch Mount
27		500-G-AF	1	Rear Guide
28	70252	1000-G-AF	1	Top Guide
29		1600-AF	1	Stripper
30	70365	1600S-AF	1	Stripper Spring
31	70292	BPC-GAMMA	1	Clamp, Base Plate
32	70291	BPC-GAMMA-AF	1	Clamp, Base Plate
33	77634	CS-110	1	Plunger Shank
34	60363	WG-G-AF	1	Wire Guide
35	70261	Bimba M-02-1.5-NR	1	Push Cylinder
36		Fabco SOL-121-5	1	Slide Cylinder
37	70397	Keyence EH-614A	1	Proximity Switch
38	63506	McMaster-Carr #1095K11	1	1/8 NPT Grease Fitting
39		Pisco JSC156-U10U	1	Ø5/32" x 10-32 Speed Control
40	73803	Pisco PL156-N1U	1	Ø5/32" x 1/8-NPT Elbow Fitting, Red
41	73803	Pisco PL156-N1U	1	Ø5/32" x 1/8-NPT Elbow Fitting, Blue
42	63507	1.8 .50dp	2	Ø 1/8" x 1/2" Dowel
43		5-40 .25ssf	1	#5-40 x 1/4" Socket Set Screw
44		5-40 .38sh	6	#5-40 x 3/8" Socket Hd Cap Screw
45		6-32 .19bh	1	#6-32 x 3/16" Button Hd Cap Screw
46		6-32 .25bh	2	#6-32 x 1/4" Button Hd Cap Screw
47	63544	6-32 .50sh	2	#6-32 x 1/2" Socket Hd Cap Screw
48		6-32 .75sh	2	#6-32 x 3/4" Socket Hd Cap Screw
49	63161	8-32 .38sh	4	#8-32 x 3/8" Socket Hd Cap Screw
50		8-32 .44sh	2	#8-32 x 7/16" Socket Hd Cap Screw
51	63164	8-32 .50sh	5	#8-32 x 1/2" Socket Hd Cap Screw
52		8-32 .63fh	2	#8-32 x 3/8 Flat Hd Cap Screw
53		8-32 .88sh	1	#8-32 x 7/8" Socket Hd Cap Screw
54		3.16 .38dp	1	3/16" x 3/8" Dowel Pin
55		10fw	1	#10 Flatwasher
56	63167	10-32 hn	1	#10-32 Hex Nut
57	70110	10-32 .38sh	2	#10-32 x 3/8" Socket Hd Cap Screw
58	63056	10-32 .50sh	2	#10-32 x 1/2" Socket Hd Cap Screw
59	63532	10-32 .75sh	1	#10-32 x 3/4" Socket Hd Cap Screw
60	70030	1.4-20 .75sh	2	1/4-20 x 3/4" Socket Hd Cap Screw
61	63510	1.4 .100dp	2	1/4 x 1" Dowel Pin
62	63168	1.4-20 .100sh	2	1/4-20 x 1" Socket Hd Cap Screw
63	63487	1.4-20 .125sh	3	1/4-20 x 1 1/4" Socket Hd Cap Screw
64		3.8-16 .150sh	2	3/8-16 x 1 1/2" Socket Hd Cap Screw
65	62622	1.2 .75shss	1	1/2" x 3/4" Socket Hd Shoulder Screw
66		GBBA	1	Ground Blade Bridge Assy
67	60798	1600-375	1	Stripper/Pressure Pad

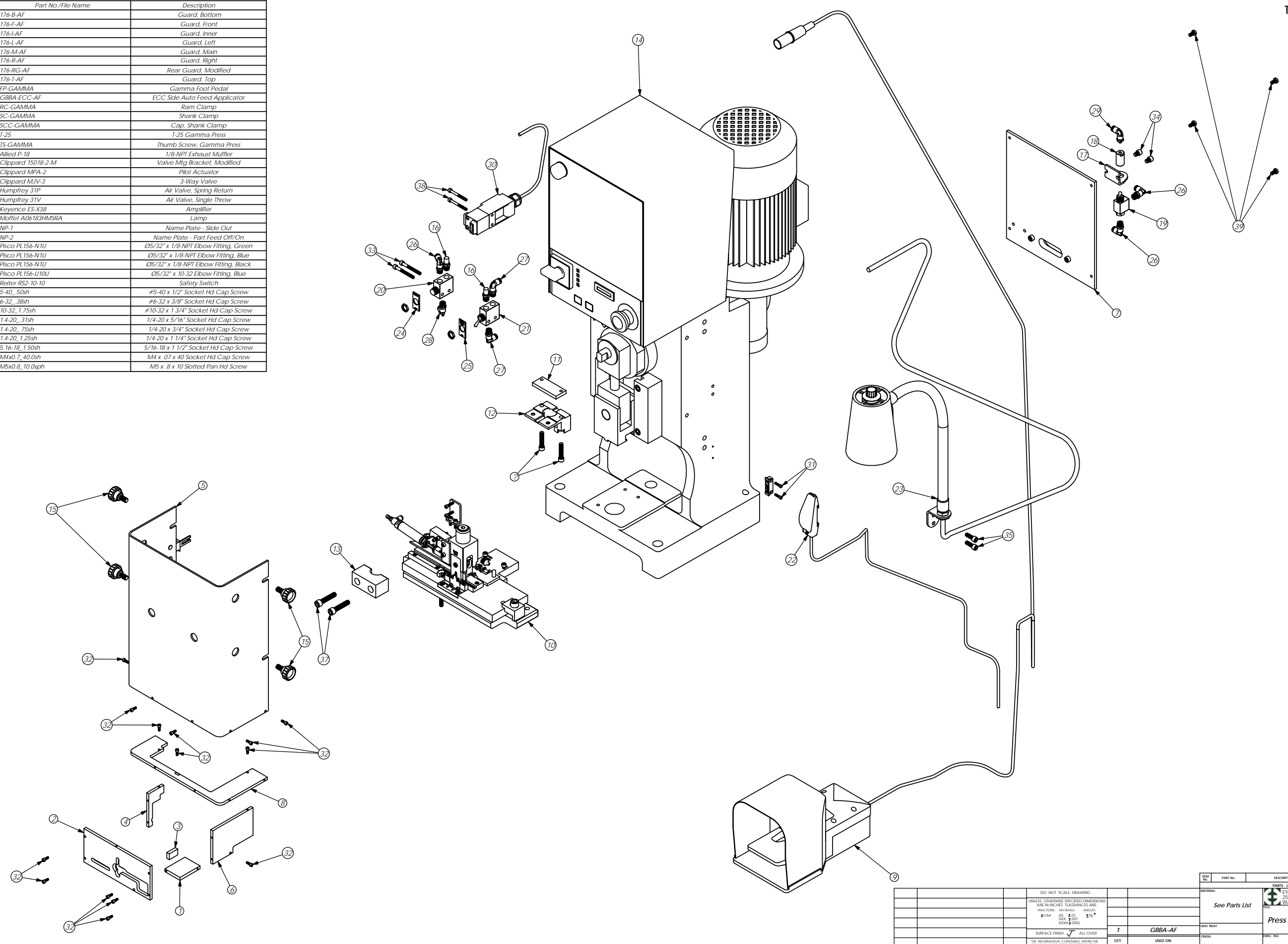
GBBA-ECC-AF



ITEM	PART NO.	DESCRIPTION	MATERIAL SPECIFICATION	QTY.	REVISION
1	GBBA-AF	USED ON			
<p>DO NOT SCALE DRAWING</p> <p>UNLESS OTHERWISE SPECIFIED DIMENSIONS ARE IN INCHES. TOLERANCES ARE FRACTIONAL DECIMALS ANGLES SURFACE FINISH ALL OVER</p> <p>THE INFORMATION CONTAINED WITHIN THIS DRAWING IS THE SOLE PROPERTY OF ETICO. NO PART OF THIS DRAWING OR ANY INFORMATION HEREIN MAY BE REPRODUCED OR TRANSMITTED IN ANY FORM OR BY ANY MEANS, ELECTRONIC OR MECHANICAL, INCLUDING PHOTOCOPYING, RECORDING, OR BY ANY INFORMATION STORAGE AND RETRIEVAL SYSTEM, WITHOUT THE WRITTEN PERMISSION OF ETICO INCORPORATED. IS PROHIBITED.</p>					
SCALE: 1:2.75		DATE: 2/26/2012	DESIGNED BY: JF	DATE: 2/26/2012	REV: -



PARTS LIST				
Item	Part Code	QTY.	Part No./File Name	Description
1		1	176-B-AF	Guard, Bottom
2	60344	1	176-F-AF	Guard, Front
3		1	176-I-AF	Guard, Inner
4		1	176-L-AF	Guard, Left
5	60917	1	176-M-AF	Guard, Main
6	60402	1	176-R-AF	Guard, Right
7		1	176-RG-AF	Rear Guard, Modified
8		1	176-T-AF	Guard, Top
9		1	FP-GAMMA	Gamma Foot Pedal
10		1	GBBA-ECC-AF	ECC Side Auto Feed Applicator
11		1	RC-GAMMA	Ram Clamp
12		1	SC-GAMMA	Shank Clamp
13		1	SCC-GAMMA	Cap. Shank Clamp
14		1	T-25	T-25 Gamma Press
15		4	TS-GAMMA	Thumb Screw, Gamma Press
16	62168	2	Allied P-18	1/8"NPT Exhaust Muffler
17		1	Clippard 15018-2-M	Valve Mtg Bracket, Modified
18		1	Clippard MPA-2	Pilot Actuator
19	72318	1	Clippard MUV-3	3-Way Valve
20	70427	1	Humphrey 31P	Air Valve, Spring Return
21	70426	1	Humphrey 31V	Air Valve, Single Throw
22	70381	1	Keyence ES-X38	Amplifier
23		1	Moffet A06183HMSRA	Lamp
24		1	NP-1	Name Plate - Slide Out
25		1	NP-2	Name Plate - Part Feed Off/On
26	73803	3	Pisco PL156-N1U	Ø5/32" x 1/8"NPT Elbow Fitting, Green
27	73803	2	Pisco PL156-N1U	Ø5/32" x 1/8"NPT Elbow Fitting, Blue
28	73803	1	Pisco PL156-N1U	Ø5/32" x 1/8"NPT Elbow Fitting, Black
29	62169	1	Pisco PL156-U10U	Ø5/32" x 10-32 Elbow Fitting, Blue
30		1	Reiter RS2-10-10	Safety Switch
31		2	5-40_50sh	#5-40 x 1/2" Socket Hd Cap Screw
32	63209	14	6-32_38sh	#6-32 x 3/8" Socket Hd Cap Screw
33	63166	2	10-32_1.75sh	#10-32 x 1 3/4" Socket Hd Cap Screw
34		2	1.4-20_31sh	1/4-20 x 5/16" Socket Hd Cap Screw
35	70030	2	1.4-20_75sh	1/4-20 x 3/4" Socket Hd Cap Screw
36	63487	2	1.4-20_1.25sh	1/4-20 x 1 1/4" Socket Hd Cap Screw
37		2	5.16-18_1.50sh	5/16-18 x 1 1/2" Socket Hd Cap Screw
38		2	M4x0.7_40.0sh	M4 x .07 x 40 Socket Hd Cap Screw
39		4	M5x0.8_10.0sph	M5 x .8 x 10 Slotted Pan Hd Screw



REV	REVISION	BY/DATE	DESCRIPTION	SCALE	APP. FILE	CHECKED BY	DATE	DRAWN BY	DATE	REV
1			GBBA-AF							
			USED ON							
			APPLICATION							

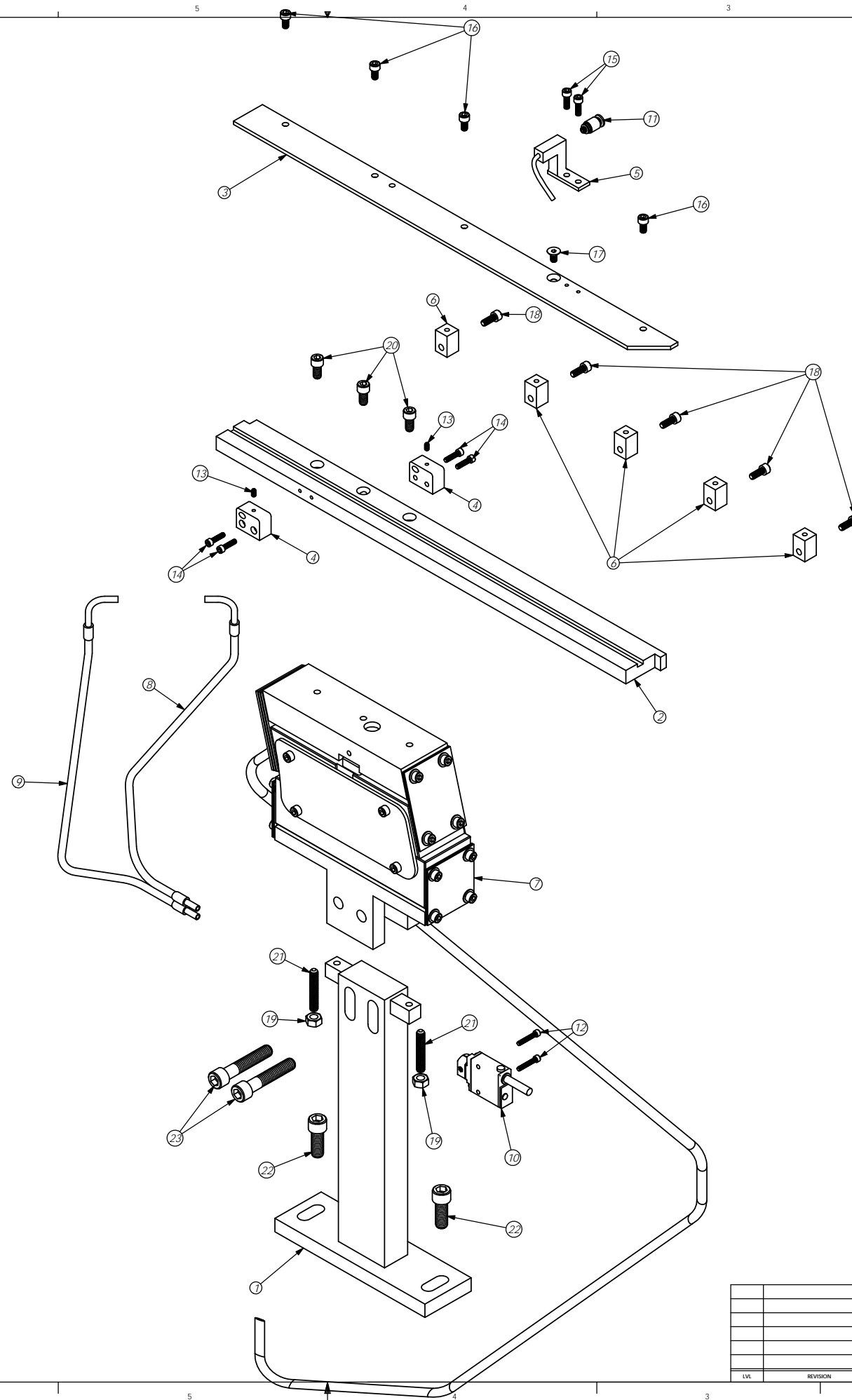
ITEM No.	PART No.	DESCRIPTION	MATERIAL SPECIFICATION	QTY.	REVISION
		See Parts List			
SURFACE FINISH: <input checked="" type="checkbox"/> ALL OVER UNLESS OTHERWISE SPECIFIED DIMENSIONS ARE IN INCHES. TOLERANCES ARE: FRACTIONS: DECIMALS: ANGLES: ±1/64 XX ±.01 ±1/2° XXX ±.005 XXXX ±.0025					
THE INFORMATION CONTAINED WITHIN THIS DRAWING IS THE SOLE PROPERTY OF ETICO. NO REPRODUCTION OR TRANSMISSION OF THIS DRAWING OR ANY PART THEREOF IS PERMITTED WITHOUT THE WRITTEN PERMISSION OF ETICO INCORPORATED.					

MATERIAL	ETICO ENGINEERED PRODUCTS 25 BELLEWS STREET WARWICK, RI 02888 (401) 467-2400
TITLE	Press Assembly, GBBA-AF
DATE	6/26/2012

PARTS LIST				
Item	Part Code	QTY.	Part No./File Name	Description
1		1	201A-AF	Track Stand
2		1	FT-G-AF	Feed Track
3		1	FIC-G-AF	Feed Track Cover
4		2	SH-AF	Sensor Holder
5		1	TAN-AF	Air Nozzle, Track
6		5	TCS-AF	Standoff, Track Cover
7		1	V-AF	Vibrator, Track Feed
8		1	Banner IA23S	Fiber Optic Cable
9		1	Banner IA23S	Fiber Optic Cable
10		1	Banner SM312FP	Sensor, Fiber Optic
11		1	Pisco POC156-U10U	Ø5/32" x 10-32 Hex Holed Straight, Black
12	63153	2	5-40_75sh	#5-40 x 3/4" Socket Hd Cap Screw
13	63208	2	6-32_25ssf	#6-32 x 1/4" Socket Hd Set Screw
14		4	6-32_56sh	#6-32 x 9/16" Socket Hd Cap Screw
15	63164	2	8-32_50sh	#8-32 x 1/2" Socket Hd Cap Screw
16	63150	4	10-24_38sh	#10-24 x 3/8" Socket Hd Cap Screw
17		1	10-24_38th	#10-24 x 3/8" Flat Hd Socket Screw
18	63056	5	10-32_50sh	#10-32 x 1/2" Socket Hd Cap Screw
19		2	1/4-20hn	1/4-20 Hex Nut
20	78328	3	1/4-20_50sh	1/4-20 x 1/2" Socket Hd Cap Screw
21		2	1/4-20_150sf	1/4-20 x 1 1/2" Socket Set Screw
22		2	3/8-16_100sh	3/8-16 x 1" Socket Hd Cap Screw
23		2	3/8-16_200sh	3/8-16 x 2" Socket Hd Cap Screw

VT-AF



REV	DATE	DESCRIPTION	BY	CHKD
1		GBBA		
1		FAE		

ITEM	PART NO.	DESCRIPTION	MATERIAL SPECIFICATION	QTY	REVISION
		DO NOT SCALE DRAWING			
		UNLESS OTHERWISE SPECIFIED DIMENSIONS ARE IN INCHES. DECIMALS ARE FRACTIONS. DIMENSIONS ANGLES			
		1/64 XX 1/32 1/16 *			
		XXXX XX			
		XXXX XX			
		SURFACE FINISH ALL OVER			
		THE INFORMATION CONTAINED WITHIN THIS DRAWING IS THE SOLE PROPERTY OF ETICO. NO REPRODUCTION OR TRANSMISSION OF THIS INFORMATION IN ANY FORM OR BY ANY MEANS, ELECTRONIC OR MECHANICAL, INCLUDING PHOTOCOPYING, RECORDING, OR BY ANY INFORMATION STORAGE AND RETRIEVAL SYSTEM, IS PERMITTED WITHOUT THE WRITTEN PERMISSION OF ETICO INCORPORATED.			

MATERIAL	DESCRIPTION	QTY	REVISION
See Parts List			

SCALE	CAD FILE	CHECKED BY	DATE	DRAWN BY	DATE
1:2					6/26/2012

ETICO ENGINEERED PRODUCTS  
 25 BELLEWIS STREET  
 WARWICK, RI 02888 (401) 467-2400  
**Vibratory Track Assembly**  
 VT-AF  
 16Dec08