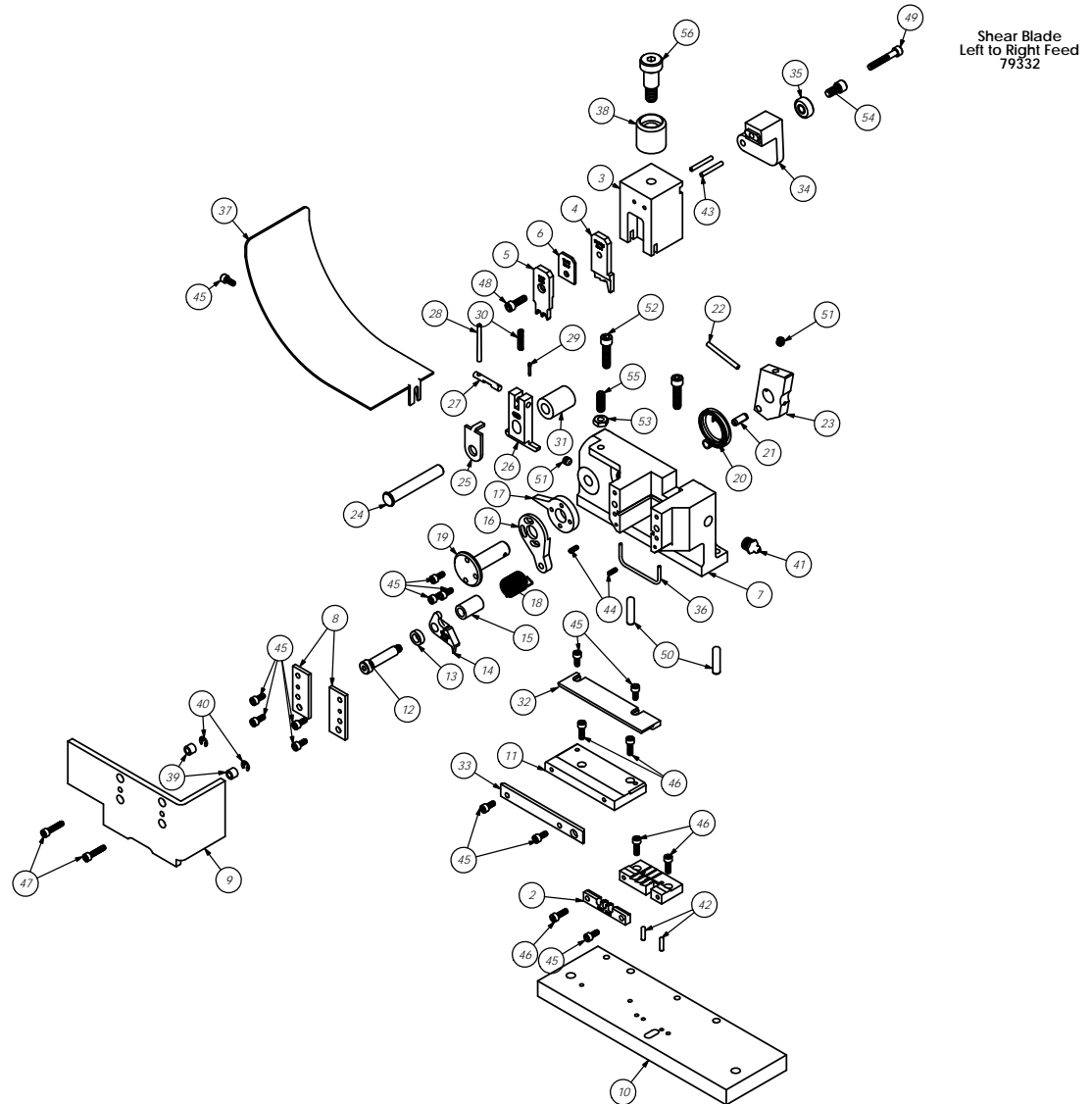


ITEM NO.	Part_Code	PART NUMBER	DESCRIPTION	QTY.
1	69307	8-127-L	Die	1
2	61019	9-150	Anvil	1
3	69326	11-CS-153	Plunger	1
4	69803	12-099L-1	Shear Punch	1
5	62451	13-129	Wire Rolling Tool	1
6	67596	19-075	Spacer	1
7	60073	101-71L	Top Casting	1
8	67600	169-16	Gib	2
9	63561	176L-ACS	Guard	1
10		210L	Base Plate, Left	1
11	60793	250-259L	Die Plate	1
12	76923	301-6	Shoulder Screw	1
13	73399	302-160	Feed Finger Spacer	1
14	69207	303-33L	Feed Finger	1
15	73400	304-.840	Feed Finger Spacer	1
16	74393	305-Finished	Feed Finger Arm	1
17	69206	306-1H-1	Feed Stop Arm	1
18	77060	307-20	Feed Finger Spring	1
19	74400	308-Finished	Feed Shaft	1
20	74402	310	Cam Return Spring	1
21	74403	311	Roll Pin	1
22	74404	312	Cam Taper Pin	1
23	63654	314L-9A-CP	Cam Body	1
24	74495	401-Finished	Brake Shaft	1
25	74496	402	Spring Retainer	1
26	74594	403-93	Brake Body	1
27	74673	404	Brake Cam	1
28	74674	405	Taper Pin	1
29	74675	406	Cotter Pin	1
30	74676	407	Brake Spring	1
31	69958	408-1.050	Brake Spacer	1
32	63584	500-CS-SB-L	Rear Guide	1
33	60779	1000-120-1	Front Guide	1
34	75710	1125-Finished	Cam Roller Bracket	1
35	75719	1142	Cam Roller Bearing	1
36	75883	1600-122	Stripper	1
37	76186	1800	Stock Chute	1
38	77634	CS-110	Plunger Shank	1
39	69624	176S-250	Guard Spacer	2
40	75083	Irving 3100-18	External Retaining Ring	2
41	63506	McMaster-Carr #1095K11	1/8 NPT Grease Fitting	1
42	63507	1.8_50dp	Ø 1/8" x 1/2" Dowel	2
43	62849	1.8_1.00dp	1/8" x 1" Dowel	2
44		5-40_38ssf	#5-40 x 3/8" Socket Hd Set Screw	2
45	63161	8-32_38sh	#8-32 x 3/8" Socket Hd Cap Screw	13
46	63164	8-32_50sh	#8-32 x 1/2" Socket Hd Cap Screw	5
47		8-32_75sh	#8-32 x 3/4" Socket Hd Cap Screw	2
48	70293	10-32_63sh	#10-32 x 5/8" Socket Hd Cap Screw	1
49	77396	10-32_1.25sh	#10-32 x 1 1/4" Socket Hd Cap Screw	1
50	63510	1.4_1.00dp	1/4 x 1" Dowel Pin	2
51	63511	1.4-20_25ssf	1/4-20 x 1/4" Socket Hd Set Screw	2
52	63168	1.4-20_1.00sh	1/4-20 x 1" Socket Hd Cap Screw	2
53	63512	1.4-28_jn	1/4-28 Jam Nut	1
54	62184	1.4-28_50sh	1/4-28 x 1/2" Socket Hd Cap Screw	1
55	63513	1.4-28_75ss	1/4-28 x 3/4" Socket Set Screw	1
56	62622	1.2_75shss	1/2" x 3/4" Socket Hd Shoulder Screw	1



Shear Blade  
Left to Right Feed  
79332

REV	DESCRIPTION	DATE	BY	CHKD
A	Added missing parts SCJ	07/27	SCJ	
1	ISSUED	07/27	SCJ	

NO. OF SCALE DRAWINGS	1	DATE	07/27
NO. OF PARTS LIST	1	DATE	07/27
NO. OF DIMENSIONAL DRAWINGS	1	DATE	07/27
NO. OF ASSEMBLY DRAWINGS	1	DATE	07/27
NO. OF MATERIAL SPECIFICATIONS	1	DATE	07/27
NO. OF FINISH SPECIFICATIONS	1	DATE	07/27
NO. OF TOLERANCE SPECIFICATIONS	1	DATE	07/27
NO. OF SURFACE FINISH SPECIFICATIONS	1	DATE	07/27
NO. OF THERMAL TREATMENT SPECIFICATIONS	1	DATE	07/27
NO. OF COATING SPECIFICATIONS	1	DATE	07/27
NO. OF OTHER SPECIFICATIONS	1	DATE	07/27

ITEM NO.	QTY.	DESCRIPTION	UNIT
1	1	See Parts List	
2	1	See Parts List	
3	1	See Parts List	
4	1	See Parts List	
5	1	See Parts List	
6	1	See Parts List	
7	1	See Parts List	
8	2	See Parts List	
9	1	See Parts List	
10	1	See Parts List	
11	2	See Parts List	
12	1	See Parts List	
13	13	See Parts List	
14	5	See Parts List	
15	2	See Parts List	
16	1	See Parts List	
17	1	See Parts List	
18	1	See Parts List	
19	1	See Parts List	
20	2	See Parts List	
21	2	See Parts List	
22	1	See Parts List	
23	1	See Parts List	
24	1	See Parts List	
25	1	See Parts List	
26	1	See Parts List	
27	1	See Parts List	
28	1	See Parts List	
29	1	See Parts List	
30	1	See Parts List	
31	1	See Parts List	
32	1	See Parts List	
33	1	See Parts List	
34	1	See Parts List	
35	1	See Parts List	
36	1	See Parts List	
37	1	See Parts List	
38	1	See Parts List	
39	2	See Parts List	
40	2	See Parts List	
41	1	See Parts List	
42	1	See Parts List	
43	1	See Parts List	
44	2	See Parts List	
45	13	See Parts List	
46	5	See Parts List	
47	2	See Parts List	
48	1	See Parts List	
49	1	See Parts List	
50	2	See Parts List	
51	2	See Parts List	
52	2	See Parts List	
53	1	See Parts List	
54	1	See Parts List	
55	1	See Parts List	
56	1	See Parts List	