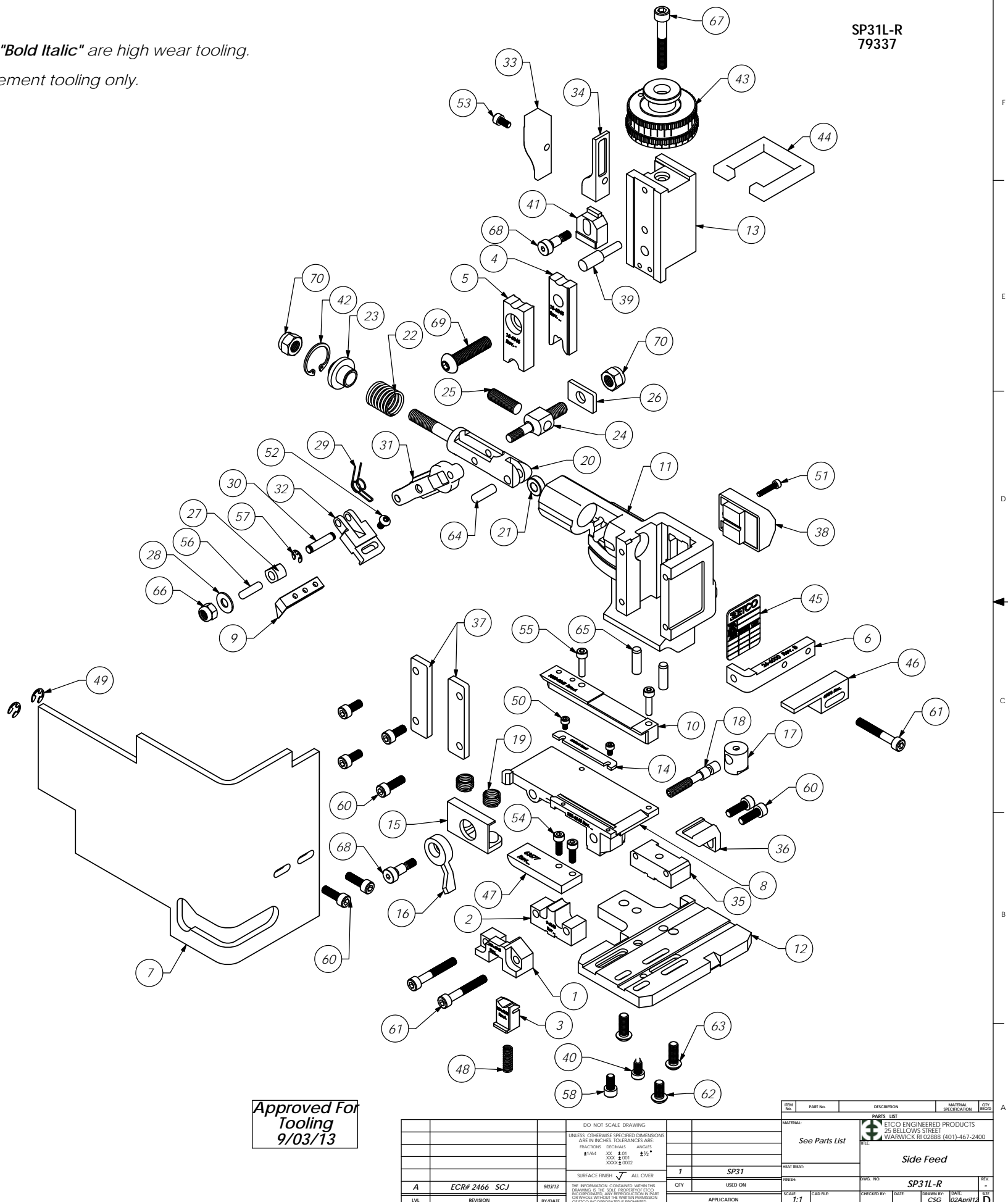


Parts List				
Item No.	Part Code	Part No.	Description	QTY.
1	63545	8A-6045	Front Cut-off Pad Retainer	1
2	63547	9-6045	Anvil	1
3	63546	12A-6045	Cut-off Pad	1
4	63548	13-6045	Rolling Tool	1
5	63550	15-6045	Cut-Off Pad Driver	1
6	61626	26-6000	Guard Bracket	1
7	63583	199-6045	Safety Guard	1
8	63554	250-6045	Feed Plate	1
9	63557	303-6045	Feed Finger	1
10	63555	1000-6045	Rear Guide	1
11	61542	MM1-S	Frame	1
12	61543	MM2-S	Base Plate	1
13	61545	MM3-S	Plunger	1
14	61762	MM6-S-1	Front Guide	1
15	61549	MM7-S	Brake	1
16	61550	MM8-S	Brake Lever	1
17	61551	MM9-S	Adjustment Screw Retainer	1
18	61552	MM10-S	Adjustment Screw	1
19	61553	MM11-S	Brake Spring	2
20	61554	MM12	Adjustable Feed Piston	1
21	61555	MM13	Cam Roller	1
22	61556	MM14	Piston Spring	1
23	61557	MM15	Spring Plate	1
24	61558	MM16	Feed Adjustment Block	1
25	61559	MM17	Feed Adjustment Screw	1
26	61560	MM18	Retainer	1
27	61561	MM19	Guide Block	1
28	61562	MM20	Feed Washer	1
29	61563	MM21	Feed Finger Spring	1
30	61564	MM22	Feed Finger Shaft	1
31	61565	MM23	Feed Arm	1
32	61566	MM24	Feed Finger Retainer	1
33	61573	MM31	Post-feed Cam	1
34	61574	MM32	Pre-Feed Cam	1
35	61581	MM37-S	Tool Block	1
36	63575	MM38-S-2	Backup Block	1
37	61583	MM39	Gib	2
38	61585	MM43	Counter Ass'y.	1
39	61586	MM44	Locator Pin	1
40	61588	MM47	Dog Screw	1
41	61590	MM48	IRT Adjustment Block	1
42	61595	MM56	Retaining Ring	1
43	61596	MM57	Continuous Regulation Head Assembly	1
44	61597	MM58	Protection Spacer	1
45	61598	MM59	ID Plate	1
46	63576	63576	Stripper	1
47	63577	63577	Stock Chute	1
48	60601	LC-032C-8	Spring	1
49	72069	McMaster Carr #98407A122	#10 E-Style Retaining Ring	2
50		M3x0.5_5.0sh	M3 x 5mm Socket Hd Cap Screw	2
51		M3x0.5_16.0sh	M3 x 0.5 x 16mm Socket Hd Cap Screw	1
52		M4x.7_8.0bh	M4 x .7 x 8mm Button Hd Cap Screw	1
53		M4x0.7_8.0sh	M4 x .7 x 8.0 Socket Hd Cap Screw	1
54		M4x0.7_12.0sh	M4 x 12mm Socket Hd Cap Screw	2
55		M4x0.7_16.0sh	M4x0.7x 16 Socket Hd. Cap Screw	2
56		M5_18.odp	M5 x 18mm Dowel Pin	1
57		M5_M3.9err	M5 External Retaining Ring	2
58	63521	M5x.8_10.0sh	M5 x .8 x 10mm Socket Hd Cap Screw	1
59		M5x.8_12.0sh	M5 x .8 x 12mm Socket Hd Cap Screw	3
60		M5x.8_16.0sh	M5 x .8 x 16mm Socket Hd Cap Screw	5
61		M5x.8_25.0sh	M5 x .08 x 25mm Socket Hd Cap Screw	3
62		M6x1.0_12.0bh	M6 x 1.0 x 12mm Button Hd Cap Screw	1
63		M6x1.0_16.0bh	M6 x 1.0 x 16mm Button Hd Cap Screw	2
64		M6_18dcp	M6 x 18mm Dowel Pin	1
65		M6_20dcp	M6 x 20mm Dowel Pin	2
66		M6_In	M6 Lock Nut	1
67		M6x1.0_40.0sh	M6 x 1.0 x 40mm Socket Hd Cap Screw	1
68		M6_10shss	M6 x 10mm Socket Hd Shoulder Screw	2
69	62092	M8 x 1.25_35.0bh	M8 x 1.25 x 35mm Button Hd Cap Screw	1
70		M8_In	M8 Lock Nut	2

Note:

- 1) Items marked in *"Bold Italic"* are high wear tooling.
- 2) Use OEM replacement tooling only.



SP31L-R
79337

Approved For
Tooling
9/03/13

ITEM NO. PART NO. DESCRIPTION MATERIAL QTY. UOM.				PARTS LIST			
UNLESS OTHERWISE SPECIFIED DIMENSIONS ARE IN INCHES. TOLERANCES ARE: FINISHING: DECIMALS ANGLES ±.004 XX ±.01 ±.1% XXXX .0005 XX ±.0001 XXXX .0005							
SURFACE FINISH: ✓ ALL OVER							
A ECR# 2466 SCJ RBP72				SP31			
REV. REVISION		BY/DATE		QTY USED ON		FINISH	
LVL				SCALE: 1:1			
APPLICATION				DATE: 02Apr11		DRAWN BY: CSC	
				CHECKED BY: DATE:		DATE: 02Apr11	
				MATERIAL: See Parts List		ETCO ENGINEERED PRODUCTS 25 BELLOWS STREET WARWICK, RI 02886 (401) 467-2400	
				HEAT TREAT:		Side Feed	
				PART NO. SP31L-R		REV: -	
						9/3/2013	