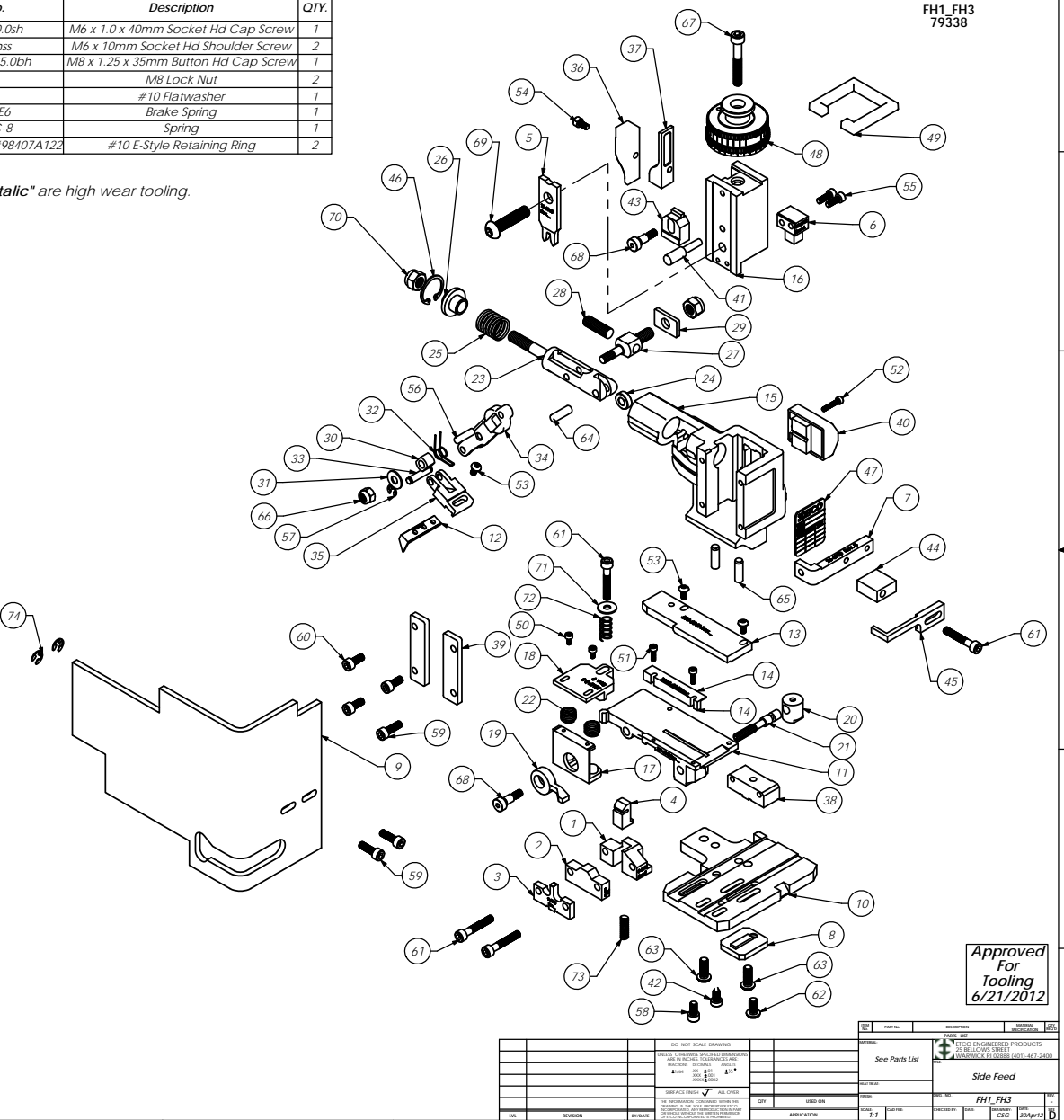


Parts List					Parts List				
Item No.	Part Code	Part No.	Description	QTY.	Item No.	Part Code	Part No.	Description	QTY.
1	<b>61846</b>	8-6012	Rear Cut-Off Die	1	67		M6x1.0_40.0sh	M6 x 1.0 x 40mm Socket Hd Cap Screw	1
2	<b>63580</b>	8A-6048	Cut-Off Die	1	68		M6_10shss	M6 x 10mm Socket Hd Shoulder Screw	2
3	<b>63578</b>	9-6048	Anvil	1	69	62092	M8 x1.25_35.0bh	M8 x 1.25 x 35mm Button Hd Cap Screw	1
4	<b>61847</b>	12-6012	Rear Cut-Off Pad	1	70		M8_in	M8 Lock Nut	2
5	<b>63579</b>	13-6048	Wire Rolling Tool	1	71	63753	10fv	#10 Flatwasher	1
6	61848	15-6012	Punch Driver	1	72	61897	LC-040-E6	Brake Spring	1
7	61626	26-6000	Guard Bracket	1	73	60601	LC-032C-8	Spring	1
8	61894	26-6012	Spring Retainer	1	74	72069	McMaster Carr #98407A122	#10 E-Style Retaining Ring	2
9	63583	199-6045	Safety Guard	1					
10	63587	200-6048	Base Plate	1					
11	63585	250-6048	Feed Plate	1					
12	61664	303-6003	Feed Finger	1					
13	63586	500-6048	Rear Guide	1					
14	63630	1000-6048	Front Guide	1					
15	61542	MM1-S	Frame	1					
16	61545	MM3-S	Plunger	1					
17	61736	MM7-S-1	Brake	1					
18	61896	MM7-S-3	Brake Shoe	1					
19	61550	MM8-S	Brake Lever	1					
20	61551	MM9-S	Adjustment Screw Retainer	1					
21	61552	MM10-S	Adjustment Screw	1					
22	61553	MM11-S	Brake Spring	2					
23	61554	MM12	Adjustable Feed Piston	1					
24	61555	MM13	Cam Roller	1					
25	61556	MM14	Piston Spring	1					
26	61557	MM15	Spring Plate	1					
27	61558	MM16	Feed Adjustment Block	1					
28	61559	MM17	Feed Adjustment Screw	1					
29	61560	MM18	Retainer	1					
30	61561	MM19	Guide Block	1					
31	61562	MM20	Feed Washer	1					
32	61563	MM21	Feed Finger Spring	1					
33	61564	MM22	Feed Finger Shaft	1					
34	61565	MM23	Feed Arm	1					
35	61566	MM24	Feed Finger Retainer	1					
36	61573	MM31	Post-feed Cam	1					
37	61574	MM32	Pre-feed Cam	1					
38	63629	MM37-S-3	Tool Block	1					
39	61583	MM39	Gib	2					
40	61585	MM43	Counter Ass'y	1					
41	61586	MM44	Locator Pin	1					
42	61588	MM47	Dog Screw	1					
43	61590	MM48	IRT Adjustment Block	1					
44	61592	MM50-S	Stripper Spacer	1					
45	61593	MM51-S	Stripper	1					
46	61595	MM56	Retaining Ring	1					
47	61598	MM59	ID Plate	1					
48	61596	MM57	Continuous Regulation Head Assembly	1					
49	61597	MM58	Protection Spacer	1					
50		M3x0.5_6.0sh	M3 x 0.5 x 6mm Socket Hd Cap Screw	2					
51		M3x0.5_12.0sh	M3 x 0.5 x 12mm Socket Hd Cap Screw	2					
52		M3x0.5_16.0sh	M3 x 0.5 x 16mm Socket Hd Cap Screw	1					
53		M4x_7_8.0bh	M4 x .7 x 8mm Button Hd Cap Screw	3					
54		M4x0_7_8.0sh	M4 x .7 x 8.0 Socket Hd Cap Screw	1					
55		M4x0_7_12.0sh	M4 x 12mm Socket Hd Cap Screw	2					
56		M5_18.0dp	M5 x 18mm Dowel Pin	1					
57		M5_M3_9err	M5 External Retaining Ring	2					
58	63521	M5x.8_10.0sh	M5 x .8 x 10mm Socket Hd Cap Screw	1					
59		M5x.8_16.0sh	M5 x .8 x 16mm Socket Hd Cap Screw	3					
60		M5x.8_12.0sh	M5 x .8 x 12mm Socket Hd Cap Screw	3					
61		M5x.8_30.0sh	M5 x .8 x 30mm Socket Hd Cap Screw	4					
62		M6x1.0_12.0bh	M6 x 1.0 x 12mm Button Hd Cap Screw	1					
63		M6x1.0_16.0bh	M6 x 1.0 x 16mm Button Hd Cap Screw	2					
64		M6_18dp	M6 x 18mm Dowel Pin	1					
65		M6_20dp	M6 x 20mm Dowel Pin	2					
66		M6_in	M6 Lock Nut	1					

Note:  
 1) Items marked in "**Bold Italic**" are high wear tooling.  
 2) Use OEM tooling only.



FH1\_FH3  
79338

Approved For Tooling  
6/21/2012

NO. 1	REV. 1	ISSUED	DATE	BY	CHKD	DATE
1						
<small>DO NOT SCALE DRAWING          DIMENSIONS SHOWN IN THIS DRAWING ARE TO BE USED AS DIMENSIONS UNLESS OTHERWISE SPECIFIED          DIMENSIONS ARE IN MILLIMETERS UNLESS OTHERWISE SPECIFIED          UNLESS OTHERWISE SPECIFIED ALL DIMENSIONS ARE TO BE TO DIMENSIONS UNLESS OTHERWISE SPECIFIED          SURFACE FINISH: ✓ RZ 0.40          DIMENSIONS IN PARENTHESIS ARE DIMENSIONS OF DIMENSIONAL TOLERANCES UNLESS OTHERWISE SPECIFIED</small>					See Parts List Side Feed FH1_FH3 CSB 30Apr12	
DATE	ISSUED	DATE	BY	CHKD	DATE	
2						
3						