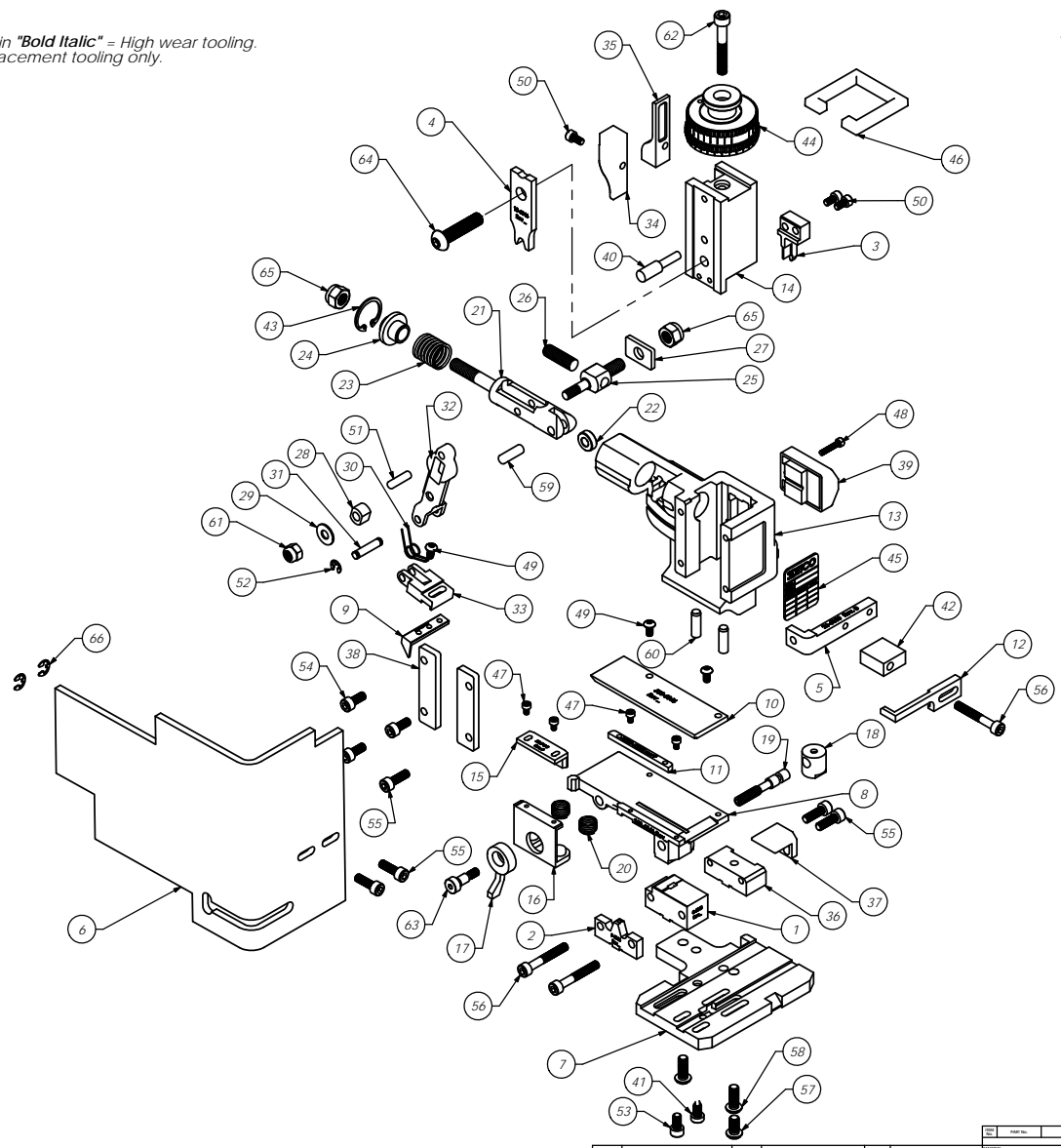


Parts List				
Item No.	Part Code	Part No.	Description	QTY.
1	63567	8-6046	Cut-off Die	1
2	63566	9-6046	Anvil	1
3	63570	12-6046	Cut-off Punch	1
4	63569	13-6046	Wire Rolling Tool	1
5	61626	26-6000	Guard Bracket	1
6	76403	199-3005	Safety Guard	1
7	63568	200-6046	Base Plate	1
8	63571	250-6046	Feed Plate	1
9	61664	303-6003	Feed Finger	1
10	63572	500-6046	Rear Guide	1
11	61663	1000-6003	Front Guide	1
12	61661	1600-6003	Stripper	1
13	61542	MM1-S	Frame	1
14	61545	MM3-S	Plunger	1
15	62605	MM7-S-5	Brake Shoe	1
16	61736	MM7-S-1	Brake	1
17	61550	MM8-S	Brake Lever	1
18	61551	MM9-S	Adjustment Screw Retainer	1
19	61552	MM10-S	Adjustment Screw	1
20	61553	MM11-S	Brake Spring	2
21	61554	MM12	Adjustable Feed Piston	1
22	61555	MM13	Cam Roller	1
23	61556	MM14	Piston Spring	1
24	61557	MM15	Spring Plate	1
25	61558	MM16	Feed Adjustment Block	1
26	61559	MM17	Feed Adjustment Screw	1
27	61560	MM18	Retainer	1
28	61561	MM19	Guide Block	1
29	61562	MM20	Feed Washer	1
30	61563	MM21	Feed Finger Spring	1
31	61564	MM22	Feed Finger Shaft	1
32	61565	MM23	Feed Arm	1
33	61566	MM24	Feed Finger Retainer	1
34	61573	MM31	Post-feed Cam	1
35	61574	MM32	Pre-Feed Cam	1
36	61581	MM37-S	Tool Block	1
37	61582	MM38-S	Backup Block	1
38	61583	MM39	Gib	2
39	61585	MM43	Counter Assy.	1
40	61586	MM44	Locator Pin	1
41	61588	MM47	Dog Screw	1
42	61592	MM50-S	Stripper Spacer	1
43	61595	MM56	Retaining Ring	1
44	61596	MM57	Continuous Regulation Head Assembly	1
45	61598	MM59	ID Plate	1
46	61597	MM58	Protection Spacer	1
47		M3x0.5_5.0sh	M3 x 5mm Socket Hd Cap Screw	4
48		M3x0.5_16.0sh	M3 x 0.5 x 16mm Socket Hd Cap Screw	1
49		M4x_7_8.obh	M4 x .7 x 8mm Button Hd Cap Screw	3
50		M4x0.7_8.0sh	M4 x .7 x 8.0 Socket Hd Cap Screw	3
51		M5_18.dcp	M5 x 18mm Dowel Pin	1
52		M5_M3_9err	M5 External Retaining Ring	2
53	63521	M5x_8_10.0sh	M5 x .8 x 10mm Socket Hd Cap Screw	1
54		M5x_8_12.0sh	M5 x .8 x 12mm Socket Hd Cap Screw	3
55		M5x_8_16.0sh	M5 x .8 x 16mm Socket Hd Cap Screw	5
56		M5x_8_35.0sh	M5 x .08 x 35mm Socket Hd Cap Screw	3
57		M6x1.0_12.0bh	M6 x 1.0 x 12mm Button Hd Cap Screw	1
58		M6x1.0_16.0bh	M6 x 1.0 x 16mm Button Hd Cap Screw	2
59		M6_18.dcp	M6 x 18mm Dowel Pin	1
60		M6_20.dcp	M6 x 20mm Dowel Pin	2
61		M6_ln	M6 Lock Nut	1
62		M6x1.0_40.0sh	M6 x 1.0 x 40mm Socket Hd Cap Screw	1
63		M6_10shss	M6 x 10mm Socket Hd Shoulder Screw	1
64	62092	M8 x1.25_35.0bh	M8 x 1.25 x 35mm Button Hd Cap Screw	1
65		M8_ln	M8 Lock Nut	2
66	72069	McMaster Carr #98407A122	#10 E-Style Retaining Ring	2

Note
 1) Items marked in "Bold Italic" = High wear tooling.
 2) Use OEM replacement tooling only.



R90
79339

Approved For Tooling 6/5/2012

NO. 100	REV. 01	DATE 06/05/2012	BY JTB	CHECKED JTB
See Parts List Side Feed R90 22Apr12				