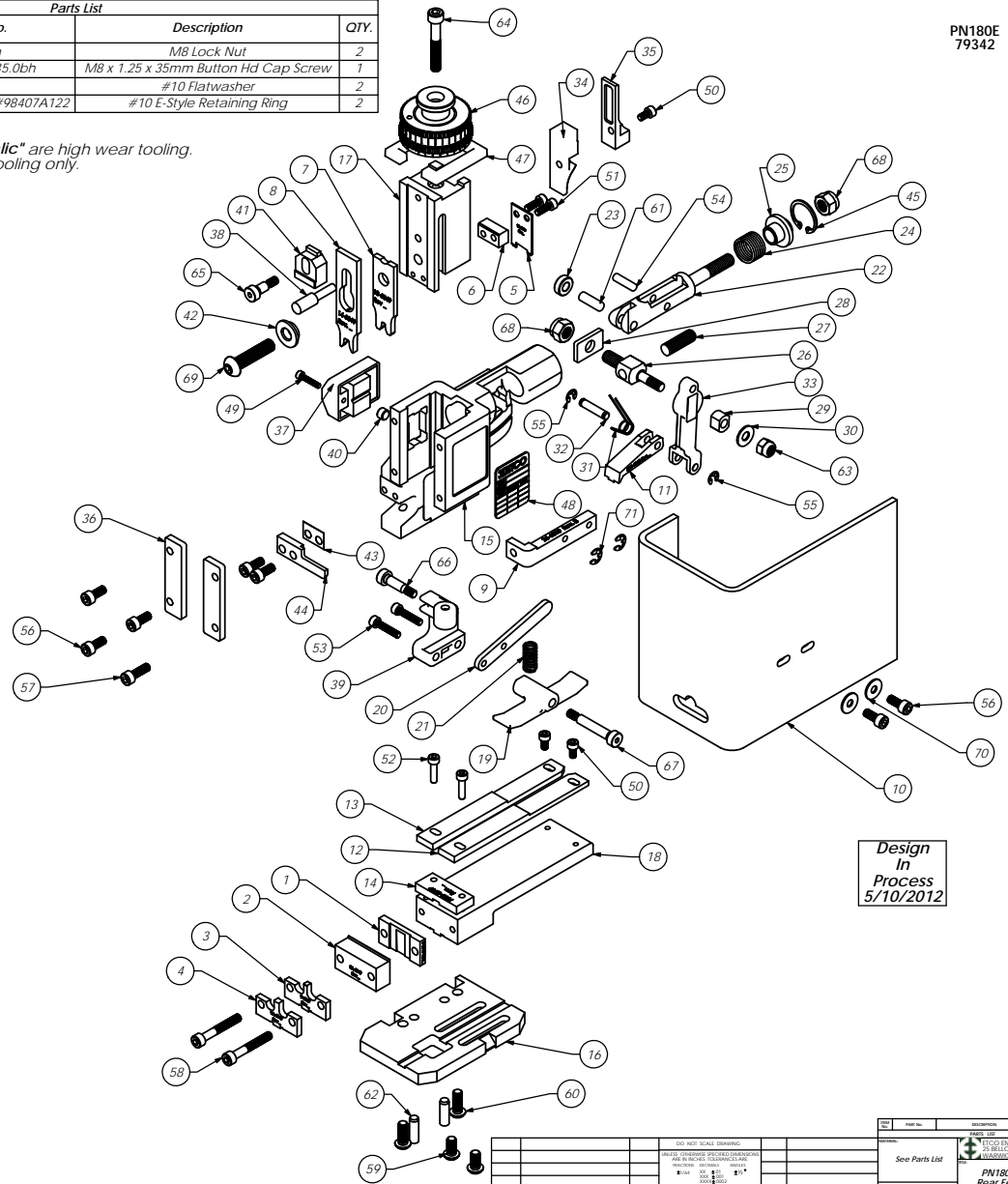


Parts List				
Item No.	Part Code	Part No.	Description	QTY.
1	63592	8-6049	Rear Cut-Off Die	1
2	63591	8A-6049	Front Cut-Off Die	1
3	63590	9-6049	Conductor Anvil	1
4	63589	9A-6049	Ins. Anvil	1
5	63390	12-6040	Cut-off Punch	1
6	63593	12A-6049	Cut-off spacer	1
7	63594	13-6049	Wire Rolling Tool	1
8	63595	14-6049	Insulation Rolling Tool	1
9	61626	26-6000	Guard Bracket	1
10	61715	199-6001	Guard	1
11	63621	303-6049	Feed Finger	1
12	63596	500-6049	Right Guide Rail	1
13	61607	1000-6049	Left Guide	1
14	63597	1600-6049	Guide Mounted Hold Down	1
15	61600	MM1-R	Frame	1
16	61601	MM2-R	Base Plate	1
17	61602	MM3-R	Plunger	1
18	61603	MM4-R	Feed Plate	1
19	61604	MM7-R	Brake	1
20	61605	MM8-R	Brake Lever	1
21	61633	MM11-R	Brake Spring	1
22	61554	MM12	Adjustable Feed Piston	1
23	61555	MM13	Cam Roller	1
24	61556	MM14	Piston Spring	1
25	61557	MM15	Spring Plate	1
26	61558	MM16	Feed Adjustment Block	1
27	61559	MM17	Feed Adjustment Screw	1
28	61560	MM18	Retainer	1
29	61561	MM19	Guide Block	1
30	61562	MM20	Feed Washer	1
31	61563	MM21	Feed Finger Spring	1
32	61564	MM22	Feed Finger Shaft	1
33	61565	MM23	Feed Arm	1
34	61573	MM31	Post-feed Cam	1
35	61574	MM32	Pre-Feed Cam	1
36	61583	MM39	Gib	2
37	61585	MM43	Counter Assy.	1
38	61586	MM44	Locator Pin	1
39	61609	MM45-R	Brake Arm	1
40	61587	MM46	Counter Button	1
41	61590	MM48	IRT Adjustment Block	1
42	61918	MM49-6	Tool Holder	1
43	61610	MM50-R	Stripper Spacer	1
44	61611	MM51-R	Stripper	1
45	61595	MM56	Retaining Ring	1
46	61596	MM57	Continuous Regulation Head Assembly	1
47	61597	MM58	Protection Spacer	1
48	61598	MM59	ID Plate	1
49		M3x0.5_16.0sh	M3 x 0.5 x 16mm Socket Hd Cap Screw	1
50		M4x0.7_8.0sh	M4 x .7 x 8.0 Socket Hd Cap Screw	3
51		M4x0.7_12.0sh	M4 x 12mm Socket Hd Cap Screw	2
52		M4x0.7_16.0sh	M4x0.7x 16 Socket Hd. Cap Screw	2
53		M4x0.7_20.0sh	M4 x 20mm Socket Hd Cap Screw	2
54		M5_18.0dp	M5 x 18mm Dowel Pin	1
55		M5_M3.9err	M5 External Retaining Ring	2
56		M5x.8_12.0sh	M5 x .8 x 12mm Socket Hd Cap Screw	7
57		M5x.8_16.0sh	M5 x .8 x 16mm Socket Hd Cap Screw	1
58		M5x.8_25.0sh	M5 x .08 x 25mm Socket Hd Cap Screw	2
59		M6x1.0_12.0bh	M6 x 1.0 x 12mm Button Hd Cap Screw	2
60		M6x1.0_16.0bh	M6 x 1.0 x 16mm Button Hd Cap Screw	2
61		M6_18dp	M6 x 18mm Dowel Pin	1
62		M6_20dp	M6 x 20mm Dowel Pin	2
63		M6_in	M6 Lock Nut	1
64		M6x1.0_40.0sh	M6 x 1.0 x 40mm Socket Hd Cap Screw	1
65		M6_10shss	M6 x 10mm Socket Hd Shoulder Screw	1
66		M6_16shss	M6 x 16mm Socket Hd Shoulder Screw	1
67		M6_30shss	M6 x 30mm Socket Hd Shoulder Screw	1

Parts List				
Item No.	Part Code	Part No.	Description	QTY.
68		M8_in	M8 Lock Nut	2
69	62092	M8 x1.25_35.0bh	M8 x 1.25 x 35mm Button Hd Cap Screw	1
70	63753	10fw	#10 Flatwasher	2
71	72069	McMaster Carr #98407A122	#10 E-Style Retaining Ring	2

Note:
1) Items marked in "**Bold Italic**" are high wear tooling.
2) Use OEM replacement tooling only.



PN180E
79342

Design
In
Process
5/10/2012

REV	REVISION	DATE	BY	CHKD	APP'D
1	ISSUE				

NO. OF SCALE DRAWINGS		DATE	
NO. OF PHOTOS		DATE	
NO. OF PARTS LIST		DATE	
NO. OF DIMENSIONAL DRAWINGS		DATE	
NO. OF MATERIAL SPECIFICATIONS		DATE	
NO. OF TOLERANCE SPECIFICATIONS		DATE	
NO. OF FINISH SPECIFICATIONS		DATE	
NO. OF SURFACE FINISH SPECIFICATIONS		DATE	
NO. OF TREATMENT SPECIFICATIONS		DATE	
NO. OF PAINT SPECIFICATIONS		DATE	
NO. OF ASSEMBLY INSTRUCTIONS		DATE	
NO. OF TEST INSTRUCTIONS		DATE	
NO. OF PACKAGING INSTRUCTIONS		DATE	
NO. OF SHIPPING INSTRUCTIONS		DATE	
NO. OF MAINTENANCE INSTRUCTIONS		DATE	
NO. OF REPAIR INSTRUCTIONS		DATE	
NO. OF SAFETY INSTRUCTIONS		DATE	
NO. OF OTHER INSTRUCTIONS		DATE	

QTY.	USED ON	DATE	BY	CHKD	APP'D