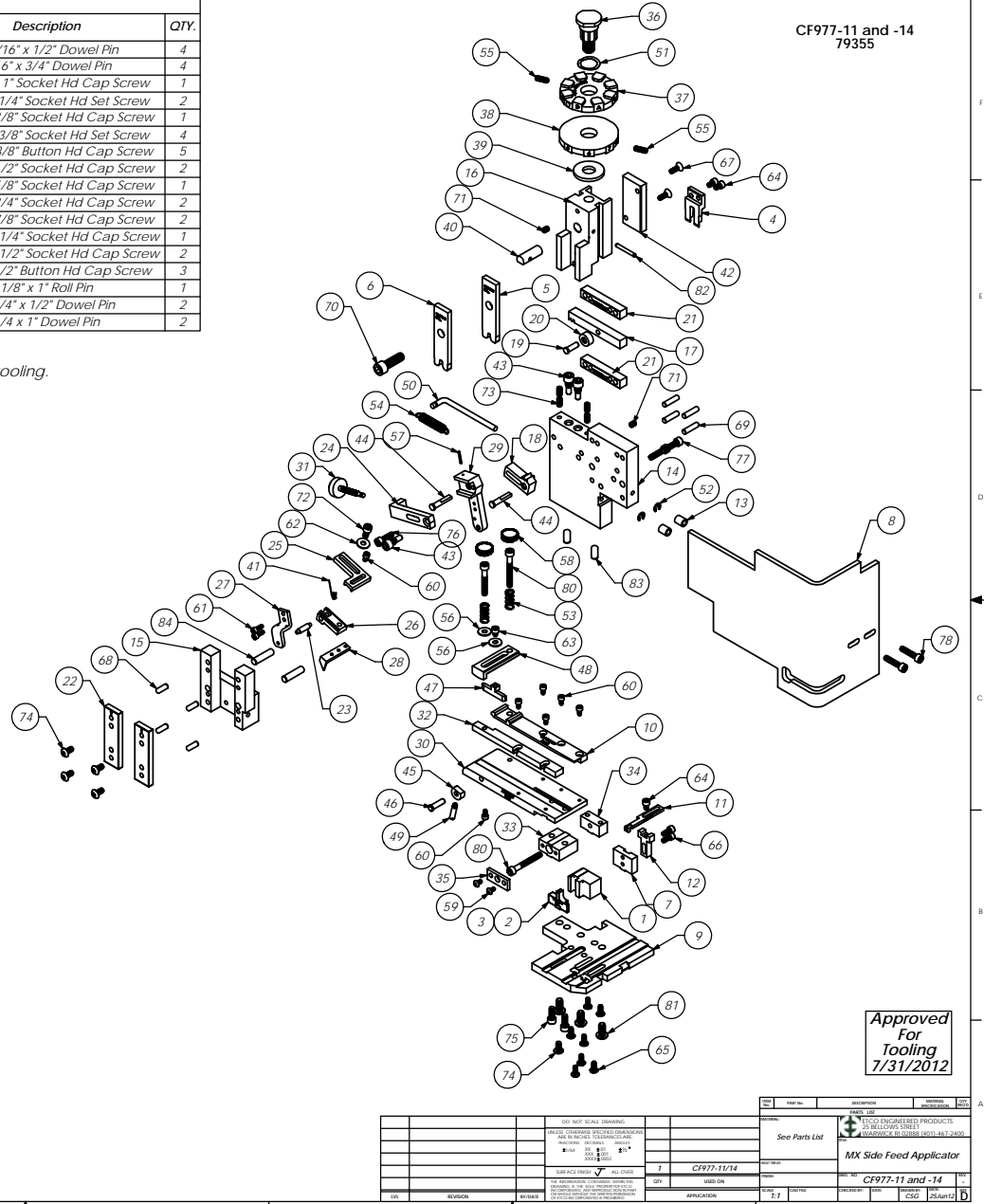


Parts List					Parts List				
Item No.	Part Code	Part No.	Description	QTY.	Item No.	Part Code	Part No.	Description	QTY.
1	63633	8-3148	Cut-Off Die	1	68	63158	3.16_.50dp	Ø 3/16" x 1/2" Dowel Pin	4
2	63634	9-3148-11	Anvil	1	69	63470	3.16_.75dp	3/16" x 3/4" Dowel Pin	4
3	63635	9-3148-14	Anvil	1	70	63495	5.16-18_1.00sh	5/16-18 x 1" Socket Hd Cap Screw	1
4	63636	12-3148	Cut-Off Punch	1	71	63054	10-32_.25ss	#10-32 x 1/4" Socket Hd Set Screw	2
5	63637	13-3148-11	Wire Rolling Tool	1	72	70110	10-32_.38sh	#10-32 x 3/8" Socket Hd Cap Screw	1
6	63638	13-3148-14	Wire Rolling Tool	1	73		10-32_.38ss	#10-32 x 3/8" Socket Hd Set Screw	4
7	61540	26-3114	Back-Up Block	1	74	78993	10-32_.38bh	#10-32 x 3/8" Button Hd Cap Screw	5
8	72271	199-3005-2	Guard	1	75	63056	10-32_.50sh	#10-32 x 1/2" Socket Hd Cap Screw	2
9	63642	200-3148	Baseplate	1	76	70293	10-32_.63sh	#10-32 x 5/8" Socket Hd Cap Screw	1
10	60903	500-CSM977	Rear Guide Rail	1	77	63532	10-32_.75sh	#10-32 x 3/4" Socket Hd Cap Screw	2
11	63650	1600A-3001-1	Adjustable Stripper Block	1	78		10-32_.88sh	#10-32 x 7/8" Socket Hd Cap Screw	2
12	74803	1600B-3000	Adjustable Stripper Holder	1	79	77396	10-32_1.25sh	#10-32 x 1 1/4" Socket Hd Cap Screw	1
13	74491	GS-375	Guard Spacer	2	80		10-32_1.50sh	#10-32 x 1 1/2" Socket Hd Cap Screw	2
14	71029	MX2A-S	Mounting Frame	1	81	63632	1.4-20_.50bh	1/4-20 x 1/2" Button Hd Cap Screw	3
15	71030	MX2B-S	Plunger Frame	1	82	62040	1.8_1.00rp	1/8" x 1" Roll Pin	1
16	74343	MX3	Ram	1	83		1.4_.50dp	Ø 1/4" x 1/2" Dowel Pin	2
17	74438	MX5-S	Cam Rack	1	84	63510	1.4_1.00dp	1/4 x 1" Dowel Pin	2
18	74346	MX6	Gear Arm	1					
19	74347	MX7	Cam Pin	1					
20	74350	MX8	Cam Roller	1					
21	74351	MX10-S	Rack Pad	2					
22	74352	MX11	Gib	2					
23	74356	MX12	Feed Finger Pivot Pin	1					
24	74360	MX13	Adjusting Bar	1					
25	74361	MX14-S	Feed Finger Arm	1					
26	74362	MX15-S	Feed Finger Guide	1					
27	78665	MX16-2	Retainer	1					
28	60899	MX17-CF977	Feed Finger	1					
29	74371	MX18-S	Swing Arm	1					
30	60901	MX24-CF977	Feed Plate	1					
31	74376	MX25	Stroke Adjustment Screw	1					
32	74840	MX28-1-S	Front Guide Rail	1					
33	74384	MX29-S	Slide Support	1					
34	74388	MX30-S	Support Anchor	1					
35	74390	MX32-S	Support Cover	1					
36	74407	MX33	Mounting Post	1					
37	63651	MX34-3148	Wire Clamp Dial	1					
38	74409	MX35	Insulation Dial	1					
39	74411	MX36	Dial Spacer	1					
40	74412	MX44	Locating Dowel	1					
41	74415	MX45-S	Feed Finger Spring	1					
42	74417	MX48-S	Cam (1 1/8" Up Stroke)	1					
43	74419	MX50	Safety Pivot Pin	3					
44	74420	MX52	Pivot Pin	2					
45	74425	MX84-S	Brake Cam	1					
46	74426	MX85-S	Cam Pivot Pin	1					
47	74428	MX86-S	Brake Shoe	1					
48	75178	MX87-S	Lift Arm	1					
49	74430	MX88-S	Lever	1					
50	74614	MX90-S	Spring Bracket	1					
51	72310	MX104	Wave Disc Spring	1					
52	75083	Irving 3100-18	External Retaining Ring	2					
53	77322	LC-045E-10-M	Spring	2					
54	74611	LE-037CD-6	Extension Spring	1					
55	70739	McMaster-Carr #3126A53	Spring Plunger	2					
56	72519	McMaster Carr #98029A043	#8 Hardened Washer	2					
57	74447	McMaster-Carr #98296A109	Expansion Pin (1/16 x 1/2")	1					
58	73785	SP1 99-602-5	#10 Black Knurled Knob	2					
59		6-32_.25bh	#6-32 x 1/4" Button Hd Cap Screw	2					
60	63207	6-32_.25sh	#6-32 x 1/4" Socket Hd Cap Screw	7					
61	63209	6-32_.38sh	#6-32 x 3/8" Socket Hd Cap Screw	2					
62	63210	8fv	#8 Flatwasher	1					
63		8-32_.19sh	#8-32 x 3/16" Socket Hd Cap Screw	1					
64	63163	8-32_.25sh	#8-32 x 1/4" Socket Hd Cap Screw	3					
65		8-32_.38bh	#8-32 x 3/8" Button Hd Cap Screw	7					
66	63161	8-32_.38sh	#8-32 x 3/8" Socket Hd Cap Screw	2					
67	63052	8-32_.50fh	#8-32 x 1/2" Flat Hd Cap Screw	2					

Note:
 1) Items marked in "Bold Italic" = High wear tooling.
 2) Use OEM replacement tooling only.



Approved
 For
 Tooling
 7/31/2012