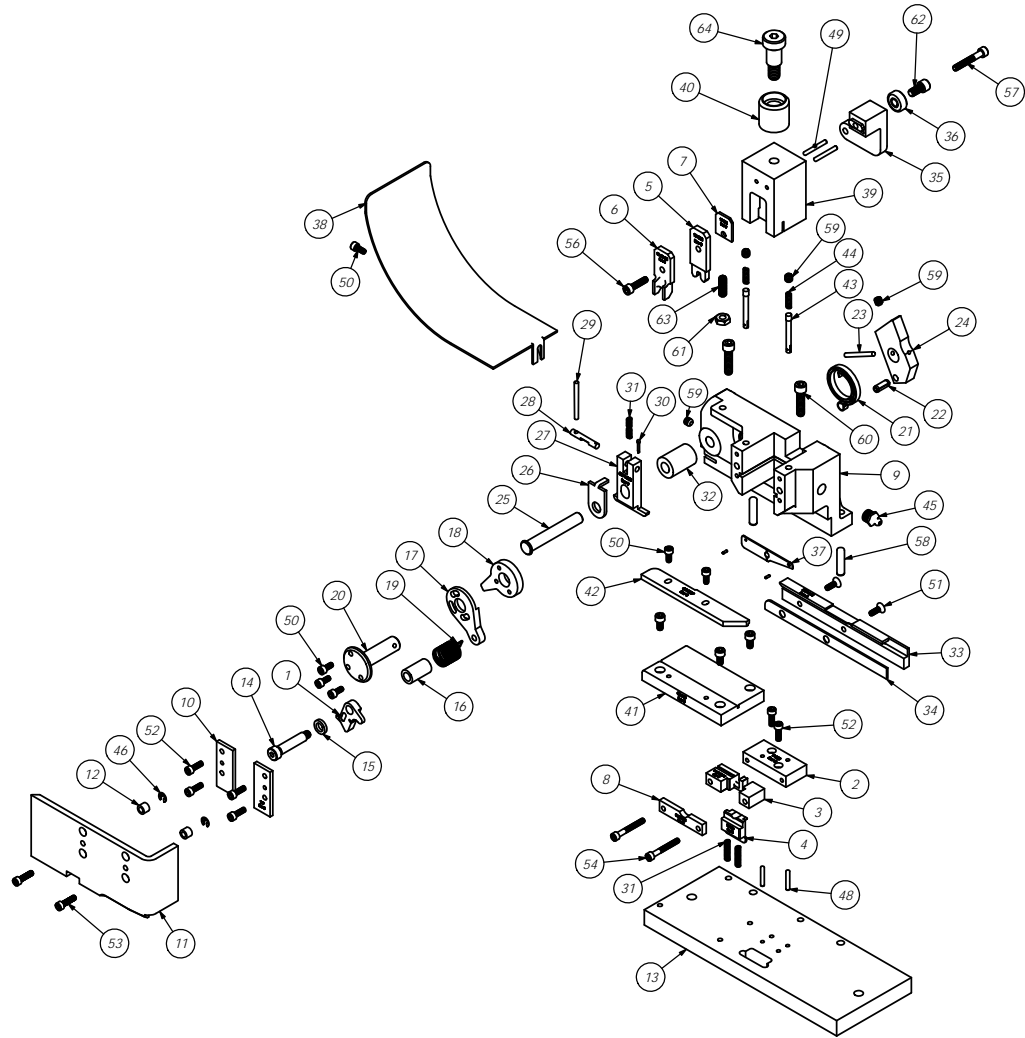


ITEM NO.	Part Code	PART NUMBER	DESCRIPTION	QTY.
1	60118	7A-50412	Feed Finger	1
2	60136	8-003	Rear Die	1
3	69584	9-CS-002-1	Anvil/Die	1
4	71578	12-003	Cut-off Punch	1
5	62343	13-002	Wire Rolling Tool	1
6	69610	15-CS-001	Driver	1
7	63296	19-072	Spacer	1
8	66922	21-CS-001	Retainer	1
9	63784	101-49-ACS	Casting	1
10	69859	169	Gib	2
11	63785	176-15-ACS	Guard	1
12	69624	176S-250	Guard Spacer	2
13	63786	205-3	Base Plate	1
14	76923	301-6	Shoulder Screw	1
15	69597	302-100	Feed Finger Spacer	1
16	69698	304-900	Feed Finger Spacer	1
17	76829	305-1	Feed Finger Arm	1
18	77639	306-1H	Feed Stop Arm	1
19	69265	307R-20	Feed Tension Spring	1
20	74400	308-Finished	Feed Shaft	1
21	74402	310	Cam Return Spring	1
22	74403	311	Roll Pin	1
23	74404	312	Cam Taper Pin	1
24	63654	314L-9A-CP	Cam Body	1
25	74495	401-Finished	Brake Shaft	1
26	74496	402	Spring Retainer	1
27	63503	403-16BW	Brake Body	1
28	74673	404	Brake Cam	1
29	74674	405	Taper Pin	1
30	74675	406	Cotter Pin	1
31	74676	407	Brake Spring	3
32	63504	408-1.095	Brake Spacer	1
33	69862	500-144	Rear Guide	1
34	69629	500-144LW	Rear Guide Spacer	1
35	75710	1125-Finished	Cam Roller Bracket	1
36	75719	1142	Cam Roller Bearing	1
37	65875	1600-114	Wire Stop / Stripper	1
38	76186	1800	Stock Chute	1
39	69615	CS-11-133	Plunger	1
40	77634	CS-110	Plunger Shank	1
41	66205	CS-265	Die Plate	1
42	60394	CS-1007	Front Guide	1
43	63432	WSP-50335	Wire Stop Plunger	2
44	63788	LC-026B-6	Compression Spring	2
45	63506	McMaster-Carr #1095K11	1/8 NPT Grease Fitting	1
46	72069	McMaster Carr #98407A118	#8 E-Style Retaining Ring	2
47	63789	1.16_19rp	1/16" x 3/16" Roll Pin	2
48	70665	1.8_75dp	1/8" x 3/4" Dowel	2
49	62849	1.8_1.00dp	1/8" x 1" Dowel	2
50	63161	8-32_38sh	#8-32 x 3/8" Socket Hd Cap Screw	6
51	63052	8-32_50fh	#8-32 x 1/2" Flat Hd Cap Screw	2
52	63164	8-32_50sh	#8-32 x 1/2" Socket Hd Cap Screw	6
53	63162	8-32_63sh	#8-32 x 5/8" Socket Hd Cap Screw	2
54	72096	8-32_1.25sh	#8-32 x 1 1/4" Socket Hd Cap Screw	2
55	70110	10-32_38sh	#10-32 x 3/8" Socket Hd Cap Screw	3
56	63532	10-32_75sh	#10-32 x 3/4" Socket Hd Cap Screw	1
57	77396	10-32_1.25sh	#10-32 x 1 1/4" Socket Hd Cap Screw	1
58	63510	1.4_1.00dp	1/4 x 1" Dowel Pin	2
59	63511	1.4-20_25ssf	1/4-20 x 1/4" Socket Hd Set Screw	4
60	63168	1.4-20_1.00sh	1/4-20 x 1" Socket Hd Cap Screw	2
61	63512	1.4-28_jn	1/4-28 Jam Nut	1
62	62184	1.4-28_50sh	1/4-28 x 1/2" Socket Hd Cap Screw	1
63	63513	1.4-28_75ss	1/4-28 x 3/4" Socket Set Screw	1
64	62622	1.2_75shss	1/2" x 3/4" Socket Hd Shoulder Screw	1

Note:
 1) Items marked in "**Bold Italic**" = High wear tooling.
 2) Use OEM replacement tooling only.

PN187W
 79356



NO REF SCALE DRAWING		ECCO ENGINEERING PRODUCTS 25 BELLEVUE STREET WARRACK BEACH SOUTH AUSTRALIA	
REVISIONS: 1.0		See Parts List	
DATE: 1/10/2013		ECC Applicator	
PART NAME: PN187W		PART NO: PN187W	
QTY: 1		REV: 1.0	
DRAWN: JF		APPROVED: JF	
DATE: 1/2		DATE: 1/2	