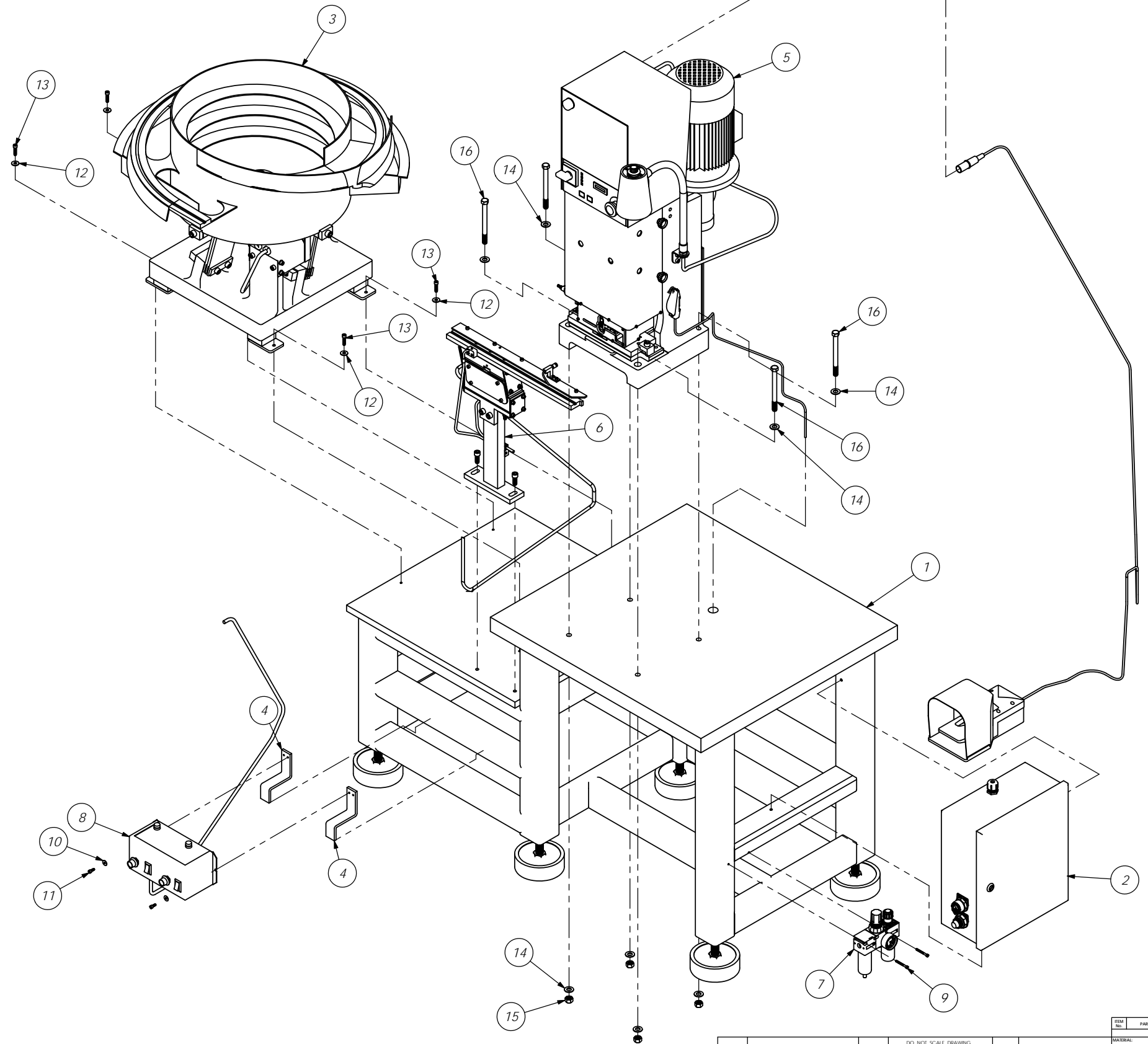


Item	Part_Code	QTY.	Part No./File Name	Description
1	63771	1	201-AF	Mounting Bench
2		1	AF-CS	Electrical Control Box Assy
3		1	FB-G-AF	Feeder Bowl
4		2	MB-AF	Mtg. Bracket, Feed Control
5	79362	1	T25-FAE-AF	Press Assembly, FAE-AF
6		1	VT-AF	Vibratory Track Assembly
7	63767	1	Watts C35-02FRLAHCA	Cube Combination System
8	63768	1	Rodix FC-92	Bowl Feeder Control
9	63752	2	8-32_1.50sh	#8-32 x 1 1/2" Socket Hd Cap Screw
10	63753	2	10fw	#10 Flatwasher
11	63056	2	10-32_.50sh	#10-32 x 1/2" Socket Hd Cap Screw
12	63754	4	1.4fw	1/4" Flatwasher
13	63168	4	1.4-20_1.00sh	1/4-20 x 1" Socket Hd Cap Screw
14	63758	8	7.16fw	7/16" Flat Washer
15	63769	4	7.16-14hn	7/16-14 Hex Nut
16	63770	4	7.16-14_5.0hh	7/16-14 x 5" Hex Bolt



FAE-AF
79362

REV	REVISION	BY/DATE	APP	QTY	USED ON	SCALE	CAD REL.	CHECKED BY	DATE	DESIGN BY	DATE	REV	DESCRIPTION
5	Noted from Plex	SCJ	4/17/14			1:6				JT	8/Jan04	1	Automatic Feed Press

DO NOT SCALE DRAWING
UNLESS OTHERWISE SPECIFIED DIMENSIONS ARE IN INCHES. TOLERANCES ARE:
FRACTIONS DECIMALS ANGLES
1/16" 0.015" 1/2°
1/32" 0.005" 1/4°
1/64" 0.001" 1/8°

SURFACE FINISH: $\sqrt{\quad}$ ALL OVER

THE INFORMATION CONTAINED HEREIN IS THE PROPERTY OF ETICO ENGINEERED PRODUCTS AND IS TO BE KEPT IN CONFIDENCE. ANY REPRODUCTION IN WHOLE OR IN PART WITHOUT THE WRITTEN PERMISSION OF ETICO ENGINEERED PRODUCTS IS PROHIBITED.

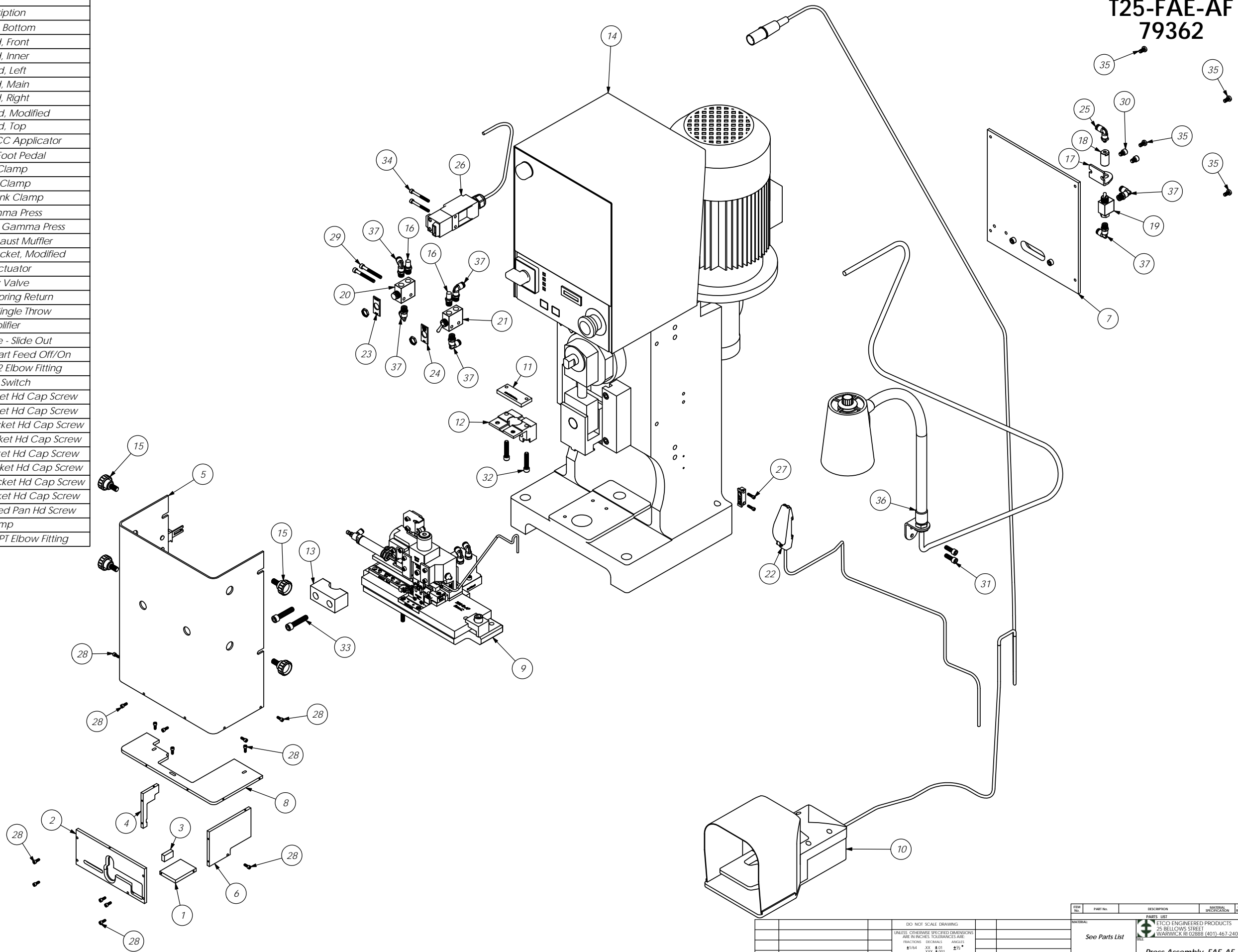
ETICO ENGINEERED PRODUCTS
25 BELLOWS STREET
WARWICK, RI 02888 (401)-467-2400

See Parts List

FAE

FAE-AF

PARTS LIST				
Item	Part_Code	QTY.	Part No./File Name	Description
1	63745	1	176-B-AF	Guard, Bottom
2	60344	1	176-F-AF	Guard, Front
3	63746	1	176-I-AF	Guard, Inner
4	63747	1	176-L-AF	Guard, Left
5	60917	1	176-M-AF	Guard, Main
6	60402	1	176-R-AF	Guard, Right
7	63748	1	176-RG-AF	Rear Guard, Modified
8	63749	1	176-T-AF	Guard, Top
9	79367	1	FAE-ECC-AF	Auto-Feed ECC Applicator
10	63751	1	FP-GAMMA	Gamma Foot Pedal
11	71790	1	RC-GAMMA	Ram Clamp
12	71791	1	SC-GAMMA	Shank Clamp
13	71792	1	SCC-GAMMA	Cap, Shank Clamp
14		1	T-25	T-25 Gamma Press
15	63755	4	TS-GAMMA	Thumb Screw, Gamma Press
16	62168	2	Allied P-18	1/8-NPT Exhaust Muffler
17	63756	1	Clippard 15018-2-M	Valve Mtg Bracket, Modified
18	63757	1	Clippard MPA-2	Pilot Actuator
19	72318	1	Clippard MJV-3	3-Way Valve
20	60427	1	Humpfrey 31P	Air Valve, Spring Return
21	60426	1	Humpfrey 31V	Air Valve, Single Throw
22	60381	1	Keyence ES-X38	Amplifier
23	63759	1	NP-1	Name Plate - Slide Out
24	63760	1	NP-2	Name Plate - Part Feed Off/On
25	62169	1	Pisco PL156-U10U	Ø5/32" x 10-32 Elbow Fitting
26	63761	1	Reiter RS2-10-10	Safety Switch
27	63762	2	5-40_.50sh	#5-40 x 1/2" Socket Hd Cap Screw
28	63209	14	6-32_.38sh	#6-32 x 3/8" Socket Hd Cap Screw
29	63166	2	10-32_1.75sh	#10-32 x 1 3/4" Socket Hd Cap Screw
30	63763	2	1.4-20_.31sh	1/4-20 x 5/16" Socket Hd Cap Screw
31	70030	2	1.4-20_.75sh	1/4-20 x 3/4" Socket Hd Cap Screw
32	71482	2	1.4-20_1.25sh	1/4-20 x 1 1/4" Socket Hd Cap Screw
33	63764	2	5.16-18_1.50sh	5/16-18 x 1 1/2" Socket Hd Cap Screw
34	63765	2	M4x0.7_40.0sh	M4 x .07 x 40 Socket Hd Cap Screw
35	63766	4	M5x0.8_10.0sph	M5 x .8 x 10 Slotted Pan Hd Screw
36	71219	1	Moffat A-0618-3H-MSRA	Lamp
37	73803	6	Pisco PL156-N1U	Ø5/32" x 1/8-NPT Elbow Fitting

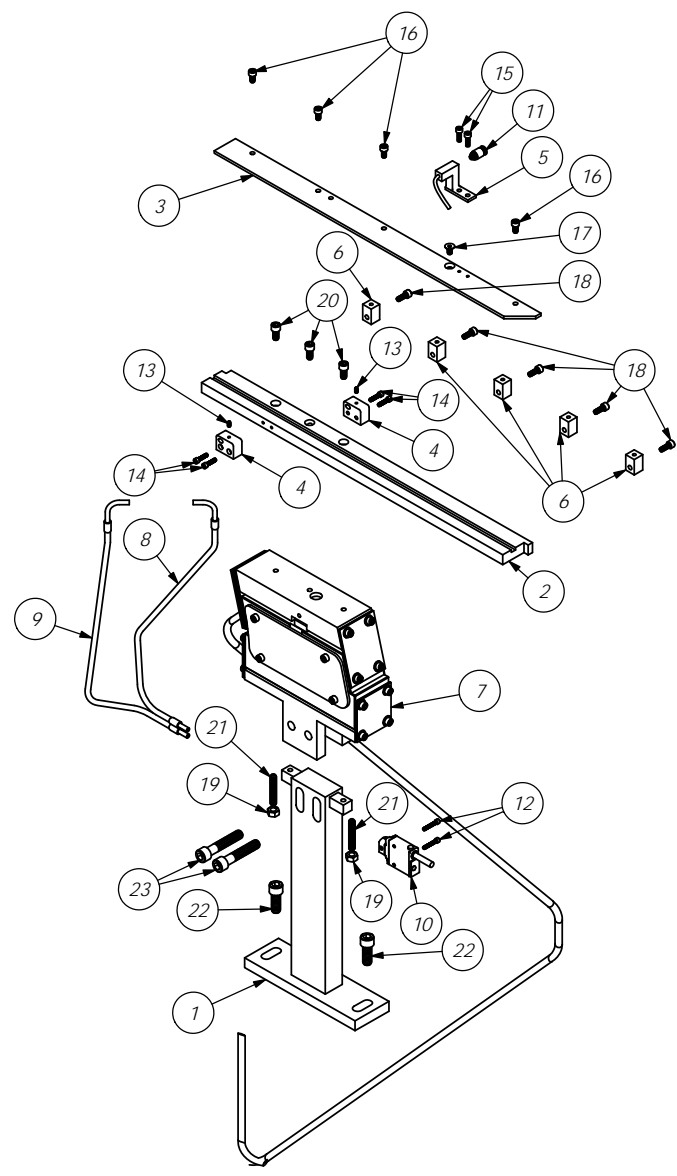


T25-FAE-AF 79362

REV	REVISION	BY/DATE	APP	QTY	USED ON	SCALE	CAD REL	CHECKED BY	DATE	DESIGNED BY	DATE	REV												
5	Noted from Plex SCJ	4/17/14		1	FAE-AF	1:3.25				JT	16Dec03	5												
<p>DO NOT SCALE DRAWING</p> <p>UNLESS OTHERWISE SPECIFIED DIMENSIONS ARE IN INCHES. TOLERANCES ARE:</p> <table border="1"> <tr> <td>FRACTIONS</td> <td>DECIMALS</td> <td>ANGLES</td> </tr> <tr> <td>±1/64"</td> <td>±.015"</td> <td>±1/2°</td> </tr> <tr> <td></td> <td>±.001"</td> <td></td> </tr> <tr> <td></td> <td>±.0005"</td> <td></td> </tr> </table> <p>SURFACE FINISH: $\sqrt{\text{ }}$ ALL OVER</p> <p>THE INFORMATION CONTAINED WITHIN THIS DRAWING IS THE SOLE PROPERTY OF ETICO. IT IS TO BE USED FOR THE MANUFACTURE OF THE ITEM SPECIFICALLY IDENTIFIED HEREIN. ANY REPRODUCTION OR TRANSMISSION OF THIS INFORMATION WITHOUT THE WRITTEN PERMISSION OF ETICO IS PROHIBITED.</p>													FRACTIONS	DECIMALS	ANGLES	±1/64"	±.015"	±1/2°		±.001"			±.0005"	
FRACTIONS	DECIMALS	ANGLES																						
±1/64"	±.015"	±1/2°																						
	±.001"																							
	±.0005"																							

REV	PART No.	DESCRIPTION	MATERIAL SPECIFICATION	QTY	OFF
	See Parts List				REC'D
<p>ETICO ENGINEERED PRODUCTS 25 BELLOWS STREET WARWICK, RI 02888 (401)-467-2400</p> <p>Press Assembly, FAE-AF</p> <p>T25-FAE-AF</p>					

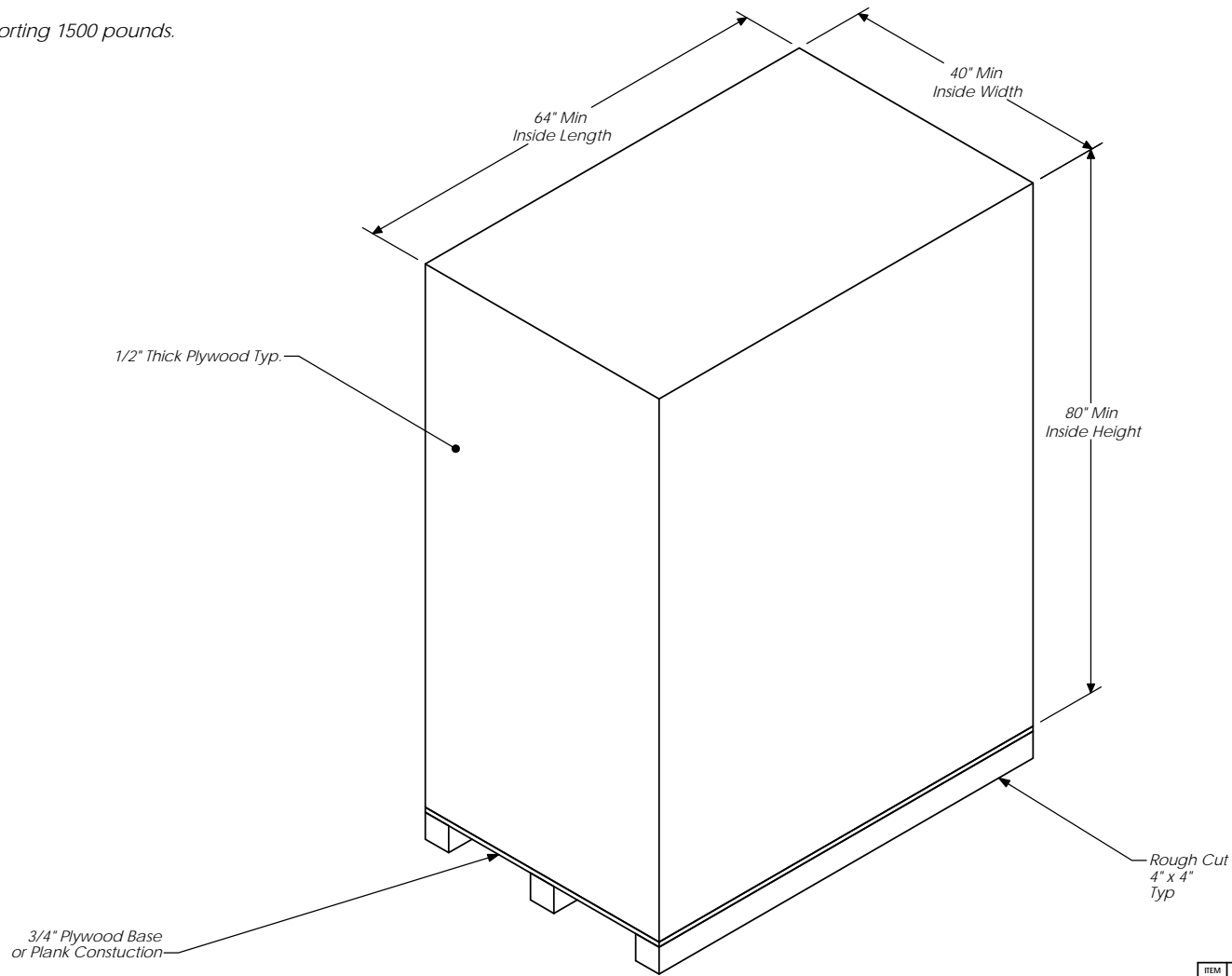
PARTS LIST				
Item	Part_Code	QTY.	Part No./File Name	Description
1		1	201A-AF	Track Stand
2		1	FT-G-AF	Feed Track
3		1	FTC-G-AF	Feed Track Cover
4		2	SH-AF	Sensor Holder
5		1	TAN-AF	Air Nozzle, Track
6		5	TCS-AF	Standoff, Track Cover
7		1	V-AF	Vibrator, Track Feed
8		1	Banner IA23S	Fiber Optic Cable
9		1	Banner IA23S	Fiber Optic Cable
10		1	Banner SM312FP	Sensor, Fiber Optic
11		1	Pisco POC156-U10U	Ø5/32" x 10-32 Hex Holed Straight, Black
12	63153	2	5-40_.75sh	#5-40 x 3/4" Socket Hd Cap Screw
13	63208	2	6-32_.25ssf	#6-32 x 1/4" Socket Hd Set Screw
14		4	6-32_.56sh	#6-32 x 9/16" Socket Hd Cap Screw
15	63164	2	8-32_.50sh	#8-32 x 1/2" Socket Hd Cap Screw
16	63150	4	10-24_.38sh	#10-24 x 3/8" Socket Hd Cap Screw
17		1	10-24_.38fh	#10-24 x 3/8" Flat Hd Socket Screw
18	63056	5	10-32_.50sh	#10-32 x 1/2" Socket Hd Cap Screw
19	71485	2	1.4-20hn	1/4-20 Hex Nut
20	78328	3	1.4-20_.50sh	1/4-20 x 1/2" Socket Hd Cap Screw
21		2	1.4-20_1.50ssf	1/4-20 x 1 1/2" Socket Set Screw
22	71902	2	3.8-16_1.00sh	3/8-16 x 1" Socket Hd Cap Screw
23	64108	2	3.8-16_2.00sh	3/8-16 x 2" Socket Hd Cap Screw



REV. NO.	PART NO.	DESCRIPTION	MATERIAL SPECIFICATION	QTY. REQ'D
		PARTS LIST		
		See Parts List		
MATERIAL		ETCO ENGINEERED PRODUCTS 25 BELLOWS STREET WARWICK, RI 02888 (401)-467-2400		
HEAT TREAT		Vibratory Track Assembly		
FINISH		DRG. NO. VT-AF		
SCALE		DATE: 16Dec03		
BY/DATE		DRAWN BY: JT		
CHECKED BY		DATE		
SCALE		CAD FILE		
APPLICATION		SCALE: 1:1		
LVL	REVISION	BY/DATE	APPLICATION	SCALE

Note:
Must be capable of supporting 1500 pounds.

C-AF



LVL	REVISION	BY/DATE

DO NOT SCALE DRAWING
UNLESS OTHERWISE SPECIFIED DIMENSIONS ARE IN INCHES. TOLERANCES ARE:
FRACTIONS DECIMALS ANGLES
±1/64 .XX ±.01 ±½°
.XXX ±.001
.XXXX ±.0002

SURFACE FINISH ALL OVER

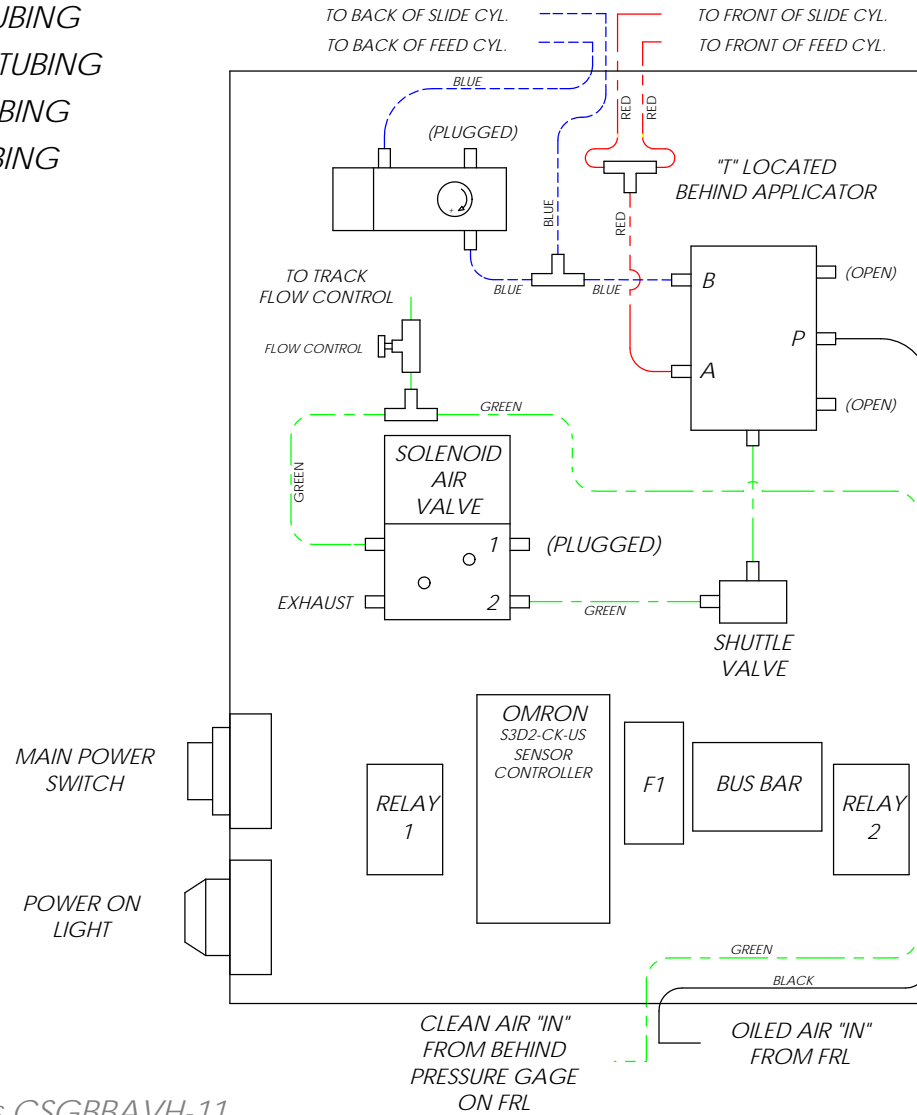
THE INFORMATION CONTAINED WITHIN THIS DRAWING IS THE SOLE PROPERTY OF ETCO INCORPORATED. ANY REPRODUCTION IN PART OR WHOLE WITHOUT THE WRITTEN PERMISSION OF ETCO INCORPORATED IS PROHIBITED.

1	FAE-AF
1	GBBA-AF
QTY	USED ON
APPLICATION	

ITEM No.	PART No.	DESCRIPTION	MATERIAL SPECIFICATION	QTY REQ'D
See Above		PARTS LIST		
See Above		ETCO ENGINEERED PRODUCTS 25 BELLOWS STREET WARWICK RI 02888 (401)-467-2400		
See Above		TITLE: Packing Crate		
See Above		HEAT TREAT:		
See Above		FINISH:		
See Above		DWG. NO. C-AF		
SCALE: 1:14	CAD FILE:	CHECKED BY:	DATE:	DRAWN BY: JT
				DATE: 22Jun04
				SHEET: B

AF-PNEUM-OS

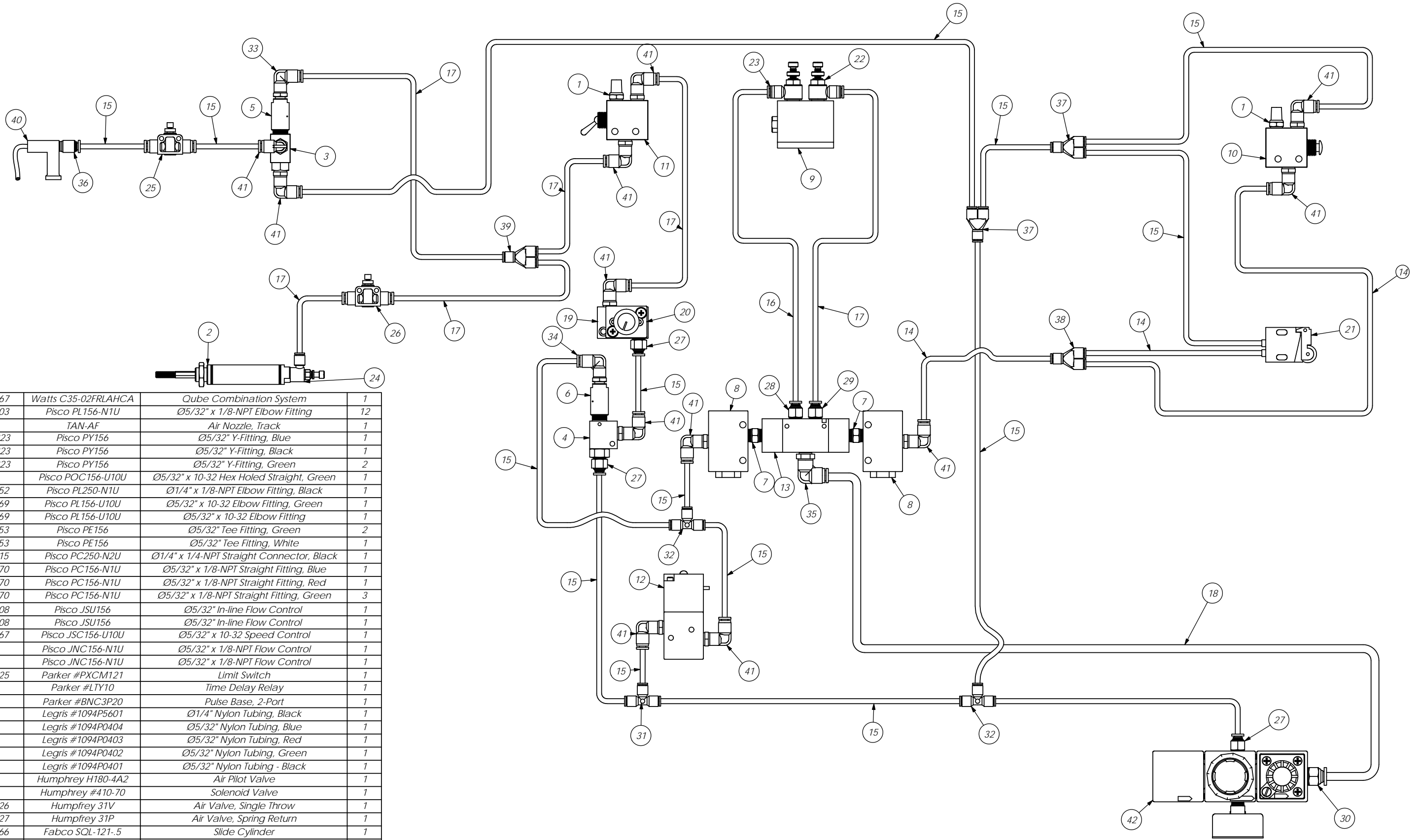
- ϕ 1/4" BLACK TUBING
- - - ϕ 5/32" GREEN TUBING
- - - ϕ 5/32" BLUE TUBING
- - - ϕ 5/32" RED TUBING



Note:
Applicable to serial numbers CSGBBAVH-11
thru CSGBBAVH-14 only.

			DO NOT SCALE DRAWING		
			UNLESS OTHERWISE SPECIFIED DIMENSIONS ARE IN INCHES. TOLERANCES ARE: FRACTIONS DECIMALS ANGLES $\pm 1/64$.XX ± 0.01 $\pm 1/2^\circ$.XXX ± 0.001 .XXXX ± 0.0002		
			SURFACE FINISH \checkmark ALL OVER		
			THE INFORMATION CONTAINED WITHIN THIS DRAWING IS THE SOLE PROPERTY OF ETCO INCORPORATED. ANY REPRODUCTION IN PART OR WHOLE WITHOUT THE WRITTEN PERMISSION OF ETCO INCORPORATED IS PROHIBITED.	REQ'D	USED ON P/N
LVL	REVISION	BY/DATE		APPLICATION	

ITEM No.	PART No.	DESCRIPTION	MATERIAL SPECIFICATION	QTY REQ'D
PARTS LIST				
MATERIAL:		ETCO ENGINEERED PRODUCTS 25 BELLOWS STREET WARWICK RI 02888 (401)-467-2400		
		TITLE: Pneumatic Schematic		
HEAT TREAT:				
FINISH:		DWG. NO.		REV.
SCALE: 1:1	CAD FILE:	CHECKED BY:	DATE:	DRAWN BY: DATE: SIZE A

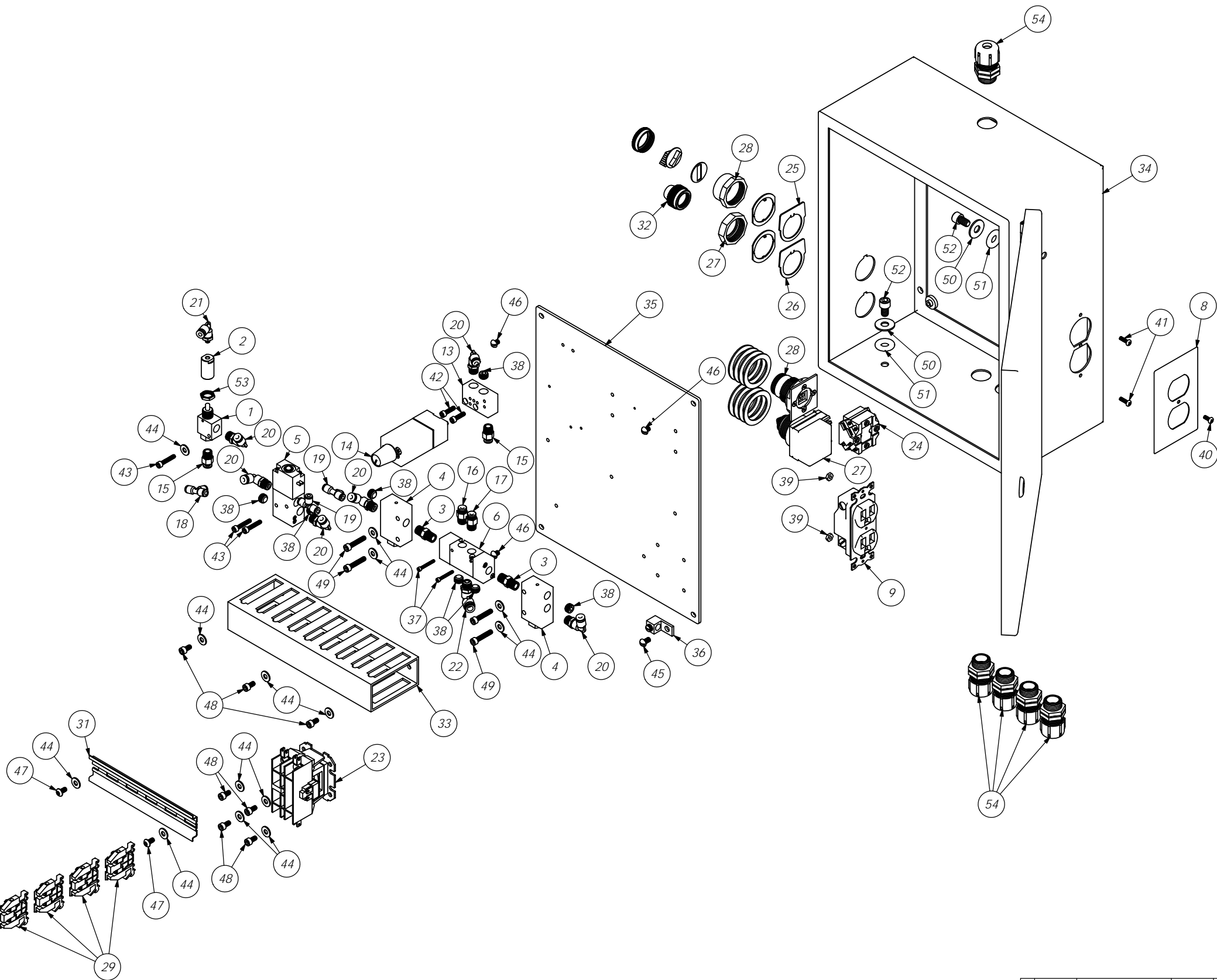
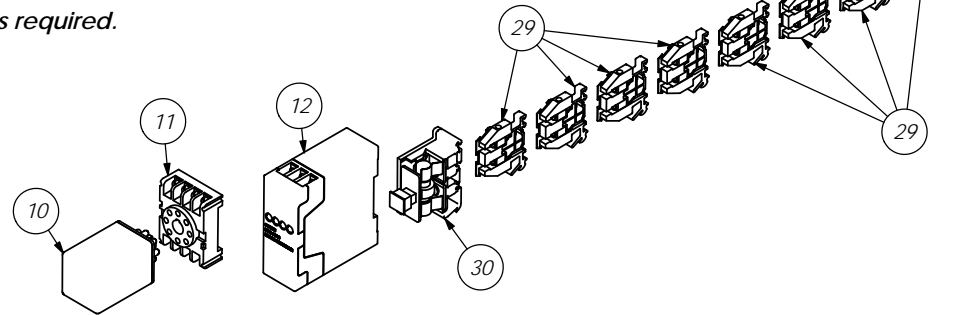


Item	Part Code	Part No./File Name	Description	QTY.
42	63767	Watts C35-02FRLAHC	Qube Combination System	1
41	73803	Pisco PL156-N1U	Ø5/32" x 1/8-NPT Elbow Fitting	12
40		TAN-AF	Air Nozzle, Track	1
39	75323	Pisco PY156	Ø5/32" Y-Fitting, Blue	1
38	75323	Pisco PY156	Ø5/32" Y-Fitting, Black	1
37	75323	Pisco PY156	Ø5/32" Y-Fitting, Green	2
36		Pisco POC156-U10U	Ø5/32" x 10-32 Hex Holed Straight, Green	1
35	72352	Pisco PL250-N1U	Ø1/4" x 1/8-NPT Elbow Fitting, Black	1
34	62169	Pisco PL156-U10U	Ø5/32" x 10-32 Elbow Fitting, Green	1
33	62169	Pisco PL156-U10U	Ø5/32" x 10-32 Elbow Fitting	1
32	63953	Pisco PE156	Ø5/32" Tee Fitting, Green	2
31	63953	Pisco PE156	Ø5/32" Tee Fitting, White	1
30	64115	Pisco PC250-N2U	Ø1/4" x 1/4-NPT Straight Connector, Black	1
29	62170	Pisco PC156-N1U	Ø5/32" x 1/8-NPT Straight Fitting, Blue	1
28	62170	Pisco PC156-N1U	Ø5/32" x 1/8-NPT Straight Fitting, Red	1
27	62170	Pisco PC156-N1U	Ø5/32" x 1/8-NPT Straight Fitting, Green	3
26	72408	Pisco JSU156	Ø5/32" In-line Flow Control	1
25	72408	Pisco JSU156	Ø5/32" In-line Flow Control	1
24	63867	Pisco JSC156-U10U	Ø5/32" x 10-32 Speed Control	1
23		Pisco JNC156-N1U	Ø5/32" x 1/8-NPT Flow Control	1
22		Pisco JNC156-N1U	Ø5/32" x 1/8-NPT Flow Control	1
21	70425	Parker #PXC121	Limit Switch	1
20		Parker #LTY10	Time Delay Relay	1
19		Parker #BNC3P20	Pulse Base, 2-Port	1
18		Legris #1094P5601	Ø1/4" Nylon Tubing, Black	1
17		Legris #1094P0404	Ø5/32" Nylon Tubing, Blue	1
16		Legris #1094P0403	Ø5/32" Nylon Tubing, Red	1
15		Legris #1094P0402	Ø5/32" Nylon Tubing, Green	1
14		Legris #1094P0401	Ø5/32" Nylon Tubing - Black	1
13		Humphrey H180-4A2	Air Pilot Valve	1
12		Humphrey #410-70	Solenoid Valve	1
11	60426	Humphrey 31V	Air Valve, Single Throw	1
10	60427	Humphrey 31P	Air Valve, Spring Return	1
9	63866	Fabco SQL-121-5	Slide Cylinder	1
8		Fabco OS-1	One Shot Valve	2
7		Couplings 112XA	Hex Nipple Pipe	2
6		Clippard MPA-3	Pilot Actuator	1
5	63757	Clippard MPA-2	Pilot Actuator	1
4		Clippard MJVO-3	Valve	1
3	72318	Clippard MJV-3	3-Way Valve	1
2	70261	Bimba M-02-1.5-NR	Push Cylinder	1
1	62168	Allied P-18	1/8-NPT Exhaust Muffler	2

DO NOT SCALE DRAWING		UNLESS OTHERWISE SPECIFIED DIMENSIONS ARE IN INCHES TOLERANCES ARE FRACTIONS DECIMALS ANGLES	
1/64"	0.015"	1/16"	0.001"
1/32"	0.005"	1/8"	0.002"
1/16"	0.001"	3/16"	0.003"
3/32"	0.002"	1/2"	0.004"
1/8"	0.003"	5/8"	0.005"
3/16"	0.004"	3/4"	0.006"
1/4"	0.005"	7/8"	0.007"
5/16"	0.006"	1"	0.008"
3/8"	0.007"		
1/2"	0.008"		
5/8"	0.009"		
3/4"	0.010"		
7/8"	0.011"		
1"	0.012"		
1 1/8"	0.013"		
1 1/4"	0.014"		
1 1/2"	0.015"		
1 3/4"	0.016"		
2"	0.017"		
2 1/4"	0.018"		
2 1/2"	0.019"		
2 3/4"	0.020"		
3"	0.021"		
3 1/4"	0.022"		
3 1/2"	0.023"		
3 3/4"	0.024"		
4"	0.025"		
4 1/4"	0.026"		
4 1/2"	0.027"		
4 3/4"	0.028"		
5"	0.029"		
5 1/4"	0.030"		
5 1/2"	0.031"		
5 3/4"	0.032"		
6"	0.033"		
6 1/4"	0.034"		
6 1/2"	0.035"		
6 3/4"	0.036"		
7"	0.037"		
7 1/4"	0.038"		
7 1/2"	0.039"		
7 3/4"	0.040"		
8"	0.041"		
8 1/4"	0.042"		
8 1/2"	0.043"		
8 3/4"	0.044"		
9"	0.045"		
9 1/4"	0.046"		
9 1/2"	0.047"		
9 3/4"	0.048"		
10"	0.049"		
10 1/4"	0.050"		
10 1/2"	0.051"		
10 3/4"	0.052"		
11"	0.053"		
11 1/4"	0.054"		
11 1/2"	0.055"		
11 3/4"	0.056"		
12"	0.057"		
12 1/4"	0.058"		
12 1/2"	0.059"		
12 3/4"	0.060"		
13"	0.061"		
13 1/4"	0.062"		
13 1/2"	0.063"		
13 3/4"	0.064"		
14"	0.065"		
14 1/4"	0.066"		
14 1/2"	0.067"		
14 3/4"	0.068"		
15"	0.069"		
15 1/4"	0.070"		
15 1/2"	0.071"		
15 3/4"	0.072"		
16"	0.073"		
16 1/4"	0.074"		
16 1/2"	0.075"		
16 3/4"	0.076"		
17"	0.077"		
17 1/4"	0.078"		
17 1/2"	0.079"		
17 3/4"	0.080"		
18"	0.081"		
18 1/4"	0.082"		
18 1/2"	0.083"		
18 3/4"	0.084"		
19"	0.085"		
19 1/4"	0.086"		
19 1/2"	0.087"		
19 3/4"	0.088"		
20"	0.089"		
20 1/4"	0.090"		
20 1/2"	0.091"		
20 3/4"	0.092"		
21"	0.093"		
21 1/4"	0.094"		
21 1/2"	0.095"		
21 3/4"	0.096"		
22"	0.097"		
22 1/4"	0.098"		
22 1/2"	0.099"		
22 3/4"	0.100"		
23"	0.101"		
23 1/4"	0.102"		
23 1/2"	0.103"		
23 3/4"	0.104"		
24"	0.105"		
24 1/4"	0.106"		
24 1/2"	0.107"		
24 3/4"	0.108"		
25"	0.109"		
25 1/4"	0.110"		
25 1/2"	0.111"		
25 3/4"	0.112"		
26"	0.113"		
26 1/4"	0.114"		
26 1/2"	0.115"		
26 3/4"	0.116"		
27"	0.117"		
27 1/4"	0.118"		
27 1/2"	0.119"		
27 3/4"	0.120"		
28"	0.121"		
28 1/4"	0.122"		
28 1/2"	0.123"		
28 3/4"	0.124"		
29"	0.125"		
29 1/4"	0.126"		
29 1/2"	0.127"		
29 3/4"	0.128"		
30"	0.129"		
30 1/4"	0.130"		
30 1/2"	0.131"		
30 3/4"	0.132"		
31"	0.133"		
31 1/4"	0.134"		
31 1/2"	0.135"		
31 3/4"	0.136"		
32"	0.137"		
32 1/4"	0.138"		
32 1/2"	0.139"		
32 3/4"	0.140"		
33"	0.141"		
33 1/4"	0.142"		
33 1/2"	0.143"		
33 3/4"	0.144"		
34"	0.145"		
34 1/4"	0.146"		
34 1/2"	0.147"		
34 3/4"	0.148"		
35"	0.149"		
35 1/4"	0.150"		
35 1/2"	0.151"		
35 3/4"	0.152"		
36"	0.153"		
36 1/4"	0.154"		
36 1/2"	0.155"		
36 3/4"	0.156"		
37"	0.157"		
37 1/4"	0.158"		
37 1/2"	0.159"		
37 3/4"	0.160"		
38"	0.161"		
38 1/4"	0.162"		
38 1/2"	0.163"		
38 3/4"	0.164"		
39"	0.165"		
39 1/4"	0.166"		
39 1/2"	0.167"		
39 3/4"	0.168"		
40"	0.169"		
40 1/4"	0.170"		
40 1/2"	0.171"		
40 3/4"	0.172"		
41"	0.173"		
41 1/4"	0.174"		
41 1/2"	0.175"		
41 3/4"	0.176"		
42"	0.177"		

ITEM NO.	Part Code	PART NUMBER	DESCRIPTION	QTY.
1		Clippard MJVO-3	Valve	1
2		Clippard MPA-3	Pilot Actuator	1
3		Couplings 112XA	Hex Nipple Pipe	2
4		Fabco OS-1	One Shot Valve	2
5		Humphrey #410-70	Solenoid Valve	1
6		Humphrey H180-4A2	Air Pilot Valve	1
7		Legris #1094P5402_1	Ø5/32" Nylon Hose - Green **	1
8		Leviton #84003	Stainless Duplex Receptical Cover	1
9		Leviton #1215	15A/125V Duplex Receptical (3-Wire)	1
10		Omron #MK2PSAC120	8-Pin Relay	1
11		Omron #PF083A-E	Track Mounted Socket	1
12		Omron #S3D2-CK-US	Sensor Controller	1
13		Parker #BNC3P20	Pulse Base, 2-Port	1
14		Parker #LTY10	Time Delay Relay	1
15	62170	Pisco PC156-N1U	Ø5/32" x 1/8-NPT Straight Fitting, Green	2
16	62170	Pisco PC156-N1U	Ø5/32" x 1/8-NPT Straight Fitting, Red	1
17	62170	Pisco PC156-N1U	Ø5/32" x 1/8-NPT Straight Fitting, Blue	1
18	63953	Pisco PE156	Ø5/32" Tee Fitting, White	1
19	63953	Pisco PE156	Ø5/32" Tee Fitting, Green	2
20	73803	Pisco PL156-N1U	Ø5/32" x 1/8-NPT Elbow Fitting	6
21	62169	Pisco PL156-U10U	Ø5/32" x 10-32 Elbow Fitting, Green	1
22	72352	Pisco PL250-N1U	Ø1/4" x 1/8-NPT Elbow Fitting, Black	1
23		Square D #8910DP11V02	Relay	1
24		SquareD #9001-KA2	Contact Block	1
25		SquareD #9001-KN244	Legend Plate (Off-On)	1
26		SquareD #9001-KN238	Legend Plate (Power On)	1
27		SquareD #9001-KP1	120V Pilot Light	1
28		SquareD #9001-KS11B	Selector Switch, 2 Position	1
29		Square D #9080GM6	Terminal Block	8
30		Square D #9080GF6	Fuse Holder	1
31		Square D #9080MH339	Mounting Track	1
32		SquareD #C31	Clear Lens	1
33		Taylor #91020	PVC Wireway	1
34		Wiegmann N1C121406	NEMA 1 Control Box	1
35		Wiegmann N1P1214	Backplate	1
36		Wiegmann WGNDKT	Wire Grounding Kit	1
37		4-40_.88sh	#4-40 x 7/8" Socket Hd Cap Screw	2
38		1.8-NPT_.25hp	1/8-NPT Plug	7
39		6-32hn	#6-32 Hex Nut	2
40		6-32_.38ph	#6-32 x 3/8" Pan Hd Screw	1
41		6-32_.50ph	#6-32 x 1/2" Pan Hd Screw	2
42	63162	8-32_.63sh	#8-32 x 5/8" Socket Hd Cap Screw	2
43	63949	8-32_.88sh	#8-32 x 7/8" Socket Hd Cap Screw	3
44		10fw-a	#10A Flatwasher	14
45		10-32_.38rsh	#10-32 x 3/8" Slotted Round Hd Screw	1
46		10-32_.25rsh	#10-32 x 1/4" Slotted Round Hd Screw	3
47	78993	10-32_.38bh	#10-32 x 3/8" Button Hd Cap Screw	2
48	70110	10-32_.38sh	#10-32 x 3/8" Socket Hd Cap Screw	7
49	63155	10-32_1.00sh	#10-32 x 1" Socket Hd Cap Screw	4
50	63946	5.16fw	5/16" Flat Washer	2
51		5.16rw	5/16" Rubber Washer	2
52		5.16-18_.50sh	5/16-18 x 1/2" Socket Head Cap Screw	2
53		15.32-32hn	15/32-32 Hex Nut	1
54		1.2 NPT_cs	Panel Mount Conduit Clamp	5

** Denotes cut to length(s) as required.



AF-CS

REV	REVISION	BY/DATE	APP	DESCRIPTION	DATE
1					

REV	DESCRIPTION	DATE
1	GBBA-AF	
1	FAB-AF	

REV	DATE	BY	CHKD
1	12/10/02	JT	

REV	DATE	BY	CHKD
1	12/10/02	JT	