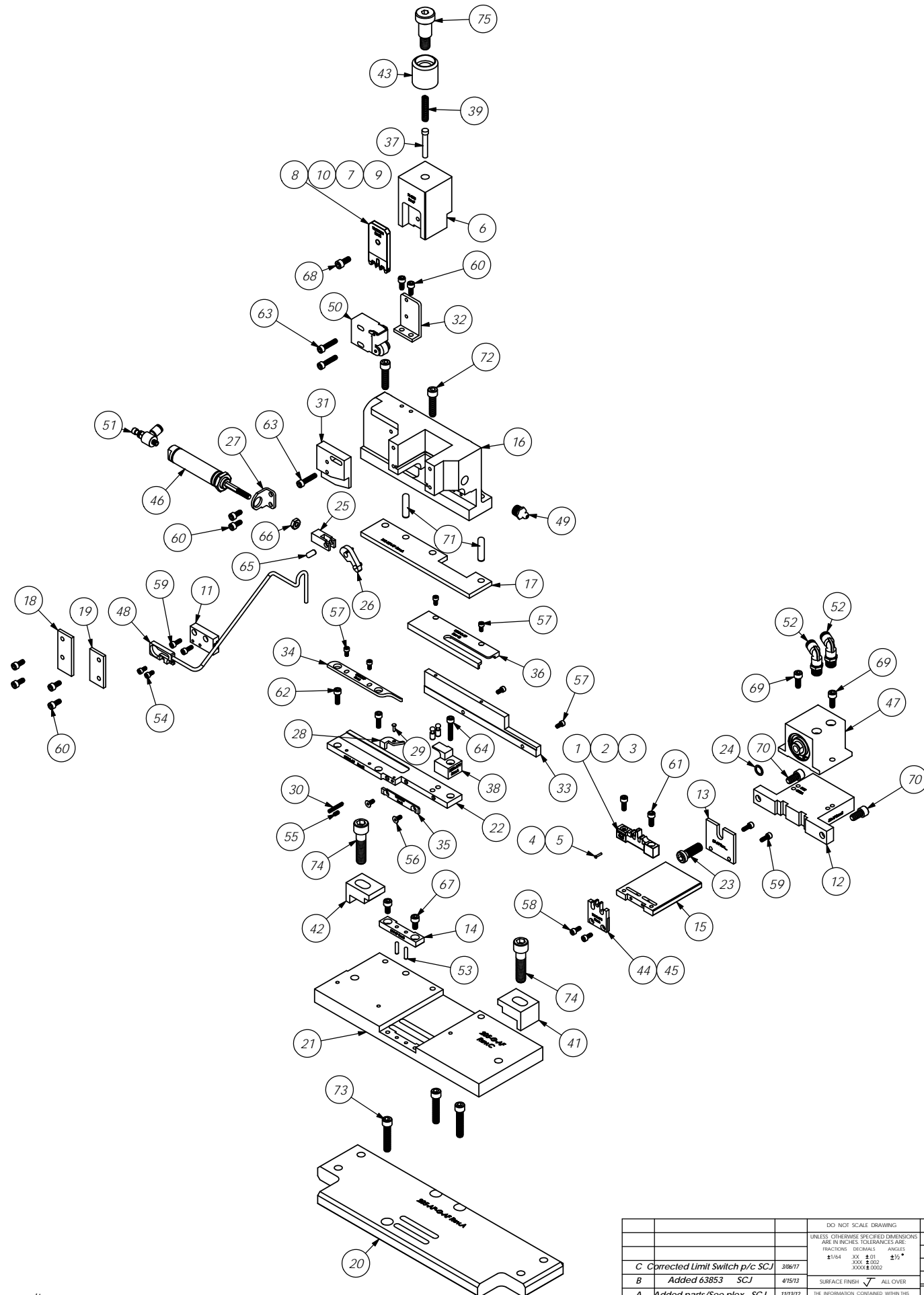


ITEM NO.	Part_code	PART NUMBER	DESCRIPTION	Default/ QTY.
1	60495	9-81129-AF	Anvil (12 Ga.)	1
2	60295	9-FAE-AF	Anvil	1
3	60289	9-FAE-12-AF	Anvil	1
4	60312	9P-F-AF	Anvil Pin	1
5	63854	9P-F-AF-1	Anvil Pin	1
6	60369	11-FAE	Plunger	1
7	60496	13-81129	Wire Rolling Tool (12 Ga.)	1
8	60819	13-14324	Wire Rolling Tool (10 Ga.)	1
9	60124	13-FAE	Wire Rolling Tool	1
10	60241	13-FAE-12	Wire Rolling Tool	1
11	63855	22-F-AF	Proximity Sensor Mount	1
12	63856	26-AF	Slide Cylinder Mounting Plate	1
13	63857	27-AF	Slide Pusher Plate	1
14	60635	28-F-AF	Slide Stop	1
15	60285	29-G-AF	Slide	1
16	63858	101-AF	Casting	1
17	63859	116-187-AF	Casting Spacer	1
18	63869	169-L-AF	Left Gib	1
19	63868	169-R-AF	Right Gib	1
20	63860	205-AP-G-AF	Adapter Plate	1
21	63861	205-G-AF	Base Plate	1
22	63862	250-F-AF	Die Plate	1
23	62835	301-AF	Slide Cylinder Screw	1
24	62834	302-AF	Slide Cylinder Washer	1
25	60339	303A-AF	Clevis Bracket	1
26	60338	303-G-AF	Feed Finger	1
27	63863	305-AF	Cylinder Mount	1
28	60610	306-F-AF	Feed Stop	1
29	60372	306A-AF	Feed Stop Pivot Pin	1
30	60373	307-AF	Feed Stop Spring	1
31	60703	314-F-AF	Adj. Cylinder Mount Brkt	1
32	60919	315-AF	Cylinder Release Switch Mount	1
33	63864	500-F-AF	Rear Guide	1
34	60401	1000-F-AF	Left Guide	1
35	60543	1005-F-AF	Front Guide	1
36	63865	1010-F-AF	Top Guide	1
37	60499	1600-AF	Stripper	1
38	63710	1600-AF-1	FAE Hook Stripper Block	1
39	60365	1600S-AF	Stripper Spring	1
40	60399	1651-F-AF	Assembly Stop	2
41	71795	BPC-GAMMA	Clamp, Base Plate	1
42	60291	BPC-GAMMA-AF	Clamp, Base Plate	1
43	77634	CS-110	Plunger Shank	1
44	60348	WG-F-AF	Wire Guide	1
45	63853	WG-F-AF-1	Wire Guide	1
46	70261	Bimba M-02-1.5-NR	Push Cylinder	1
47	63866	Fabco SOL-121-5	Slide Cylinder	1
48	70397	Keyence EH-614A	Proximity Switch	1
49	63506	McMaster-Carr #1095K11	1/8 NPT Grease Fitting	1
50	73345	Parker #PXCM121	Limit Switch	1
51	63867	Pisco JSC156-U10U	Ø5/32" x 10-32 Speed Control	1
52	73803	Pisco PL156-N1U	Ø5/32" x 1/8-NPT Elbow Fitting	2
53	63507	1.8_.50dp	Ø 1/8" x 1/2" Dowel	2
54		5-40_.25sh	#5-40 x 5/16" Socket Hd Cap Screw	2
55	70737	5-40_.25ssf	#5-40 x 1/4" Socket Set Screw	1
56		5-40_.31fh	#5-40 x 5/16" Flat Hd Cap Screw	2
57		5-40_.31sh	#5-40 x 5/16" Socket Hd Cap Screw	6
58		6-32_.31sh	#6-32 x 5/16" Socket Hd Cap Screw	2
59	63209	6-32_.38sh	#6-32 x 3/8" Socket Hd Cap Screw	4
60	63161	8-32_.38sh	#8-32 x 3/8" Socket Hd Cap Screw	8
61		8-32_.44sh	#8-32 x 7/16" Socket Hd Cap Screw	2
62	63164	8-32_.50sh	#8-32 x 1/2" Socket Hd Cap Screw	2
63	63787	8-32_.75sh	#8-32 x 3/4" Socket Hd Cap Screw	3
64	63949	8-32_.88sh	#8-32 x 7/8" Socket Hd Cap Screw	1
65		3/16_.38dp	3/16" x 3/8" Dowel Pin	1
66	63167	10-32 hn	#10-32 Hex Nut	1
67	70110	10-32_.38sh	#10-32 x 3/8" Socket Hd Cap Screw	2
68	63165	10-32_.44sh	#10-32 x 7/16" Socket Hd Cap Screw	1
69	63056	10-32_.50sh	#10-32 x 1/2" Socket Hd Cap Screw	2
70	78328	1.4-20_.50sh	1/4-20 x 1/2" Socket Hd Cap Screw	2
71	63510	1.4_1.00dp	1/4 x 1" Dowel Pin	2
72	63168	1.4-20_1.00sh	1/4-20 x 1" Socket Hd Cap Screw	2
73	71482	1.4-20_1.25sh	1/4-20 x 1 1/4" Socket Hd Cap Screw	3
74	70886	3.8-16_1.50sh	3/8-16 x 1 1/2" Socket Hd Cap Screw	2
75	62622	1.2_.75shss	1/2" x 3/4" Socket Hd Shoulder Screw	1

Note:
Items in boldface are high wear items.



FAE-ECC-AF
79367

REV	DESCRIPTION	DATE	BY/DAE	APP	SCALE	DATE	BY/DAE	APP
	DO NOT SCALE DRAWING							
	UNLESS OTHERWISE SPECIFIED DIMENSIONS ARE IN INCHES. TOLERANCES ARE:							
	FRACTIONS DECIMALS ANGLES							
	1/16 1/32 1/64 .015 .030 .045 .060 .075 .090 .110 .125 .150 .1875 .250 .3125 .375 .500 .625 .750 .875 1.000 1.250 1.500 1.750 2.000 2.500 3.000 3.500 4.000 5.000 6.000 7.000 8.000 10.000 12.000 15.000 20.000 25.000 30.000 35.000 40.000 50.000 60.000 70.000 80.000 90.000 100.000							
	SURFACE FINISH							
	ALL OVER							
	THE INFORMATION CONTAINED WITHIN THIS DRAWING IS THE SOLE PROPERTY OF ETICO ENGINEERED PRODUCTS. IT IS TO BE USED FOR THE MANUFACTURE OF THE ITEM SPECIFIED HEREIN. ANY REPRODUCTION OR TRANSMISSION OF THIS INFORMATION WITHOUT THE WRITTEN PERMISSION OF ETICO ENGINEERED PRODUCTS IS PROHIBITED.							
	See Parts List							
	FAE							
	USED ON							
	SCALE							
	1:2.5							
	DATE							
	11Apr02							
	REV							
	C	Corrected Limit Switch p/c SCJ	3/8/07					
	B	Added 63853 SCJ	4/15/02					
	A	Added parts/See plex SCJ	1/13/02					
	SCALE							
	1:2.5							
	DATE							
	11Apr02							
	REV							
	C							
	B							
	A							