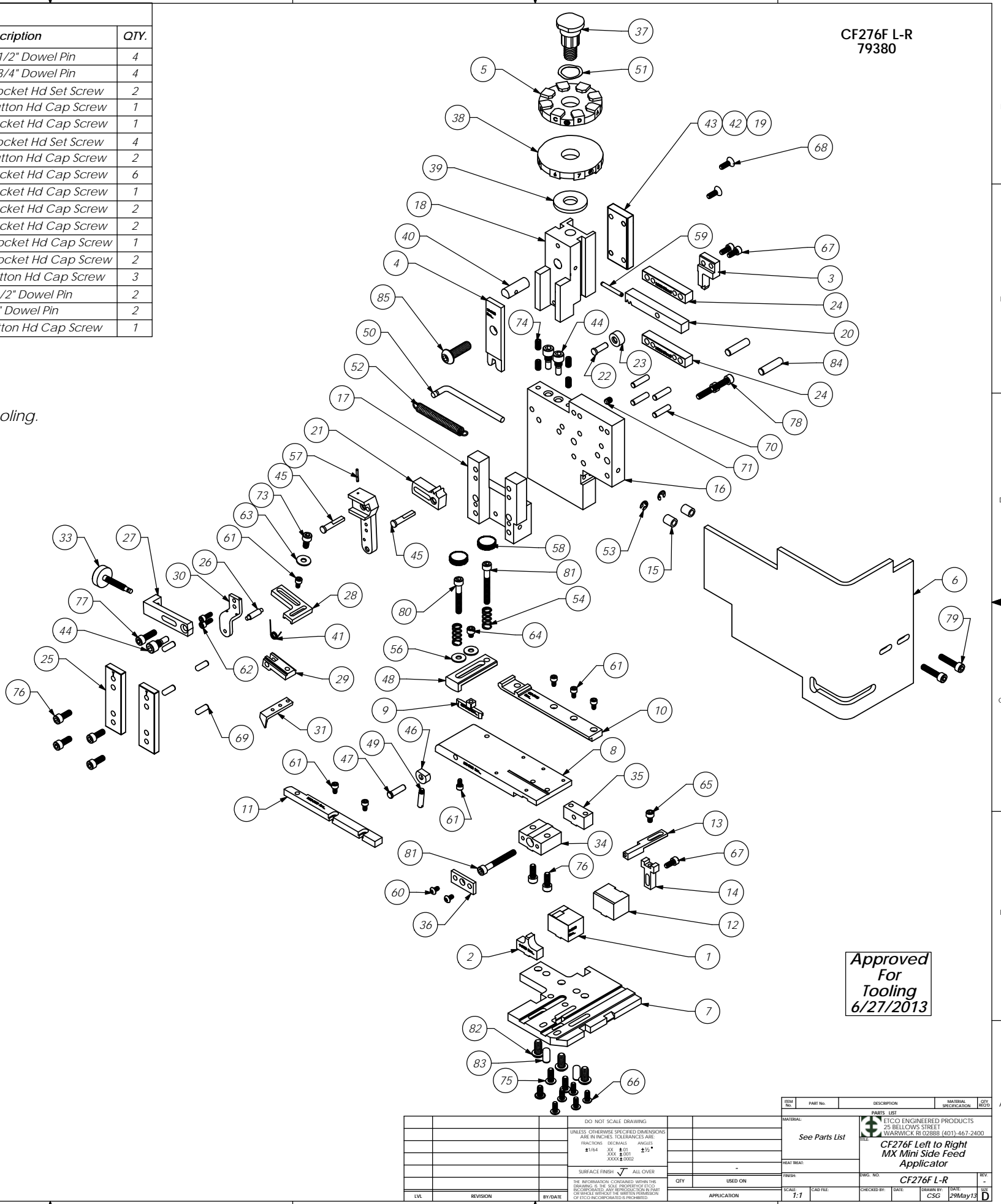


Parts List					Parts List				
Item No.	Part Code	Part No.	Description	QTY.	Item No.	Part Code	Part No.	Description	QTY.
1	<b>63955</b>	<b>8-3153</b>	<b>Cut-off Die</b>	1	69	63158	3.16_.50dp	Ø 3/16" x 1/2" Dowel Pin	4
2	<b>63954</b>	<b>9-3153</b>	<b>Anvil</b>	1	70	63470	3.16_.75dp	Ø 3/16" x 3/4" Dowel Pin	4
3	<b>63962</b>	<b>12-3153</b>	<b>Cut-off Punch</b>	1	71	63054	10-32_.25ss	#10-32 x 1/4" Socket Hd Set Screw	2
4	<b>63956</b>	<b>13-3153</b>	<b>Wire Rolling Tool</b>	1	72	78993	10-32_.38bh	#10-32 x 3/8" Button Hd Cap Screw	1
5	77330	34-3014	Wire Crimp Dial	1	73	70110	10-32_.38sh	#10-32 x 3/8" Socket Hd Cap Screw	1
6	76403	199-3005	Safety Guard	1	74	71626	10-32_.38ss	#10-32 x 3/8" Socket Hd Set Screw	4
7	63957	200-3153	Baseplate	1	75	76501	10-32_.50bh	#10-32 x 1/2" Button Hd Cap Screw	2
8	63959	250-3153	Feed Plate	1	76	63056	10-32_.50sh	#10-32 x 1/2" Socket Hd Cap Screw	6
9	63961	403-3153	Brake Shoe	1	77	70293	10-32_.63sh	#10-32 x 5/8" Socket Hd Cap Screw	1
10	63958	500-3153	Rear Guide Rail	1	78	63532	10-32_.75sh	#10-32 x 3/4" Socket Hd Cap Screw	2
11	63960	1000-3153	Front Guide Rail	1	79	70925	10-32_.88sh	#10-32 x 7/8" Socket Hd Cap Screw	2
12	74802	26-3000	Backup Block	1	80	77396	10-32_1.25sh	#10-32 x 1 1/4" Socket Hd Cap Screw	1
13	76464	1600A-3001	Adjustable Stripper Block	1	81	63826	10-32_1.50sh	#10-32 x 1 1/2" Socket Hd Cap Screw	2
14	74803	1600B-3000	Adjustable Stripper Holder	1	82	63632	1.4-20_.50bh	1/4-20 x 1/2" Button Hd Cap Screw	3
15	74491	GS-375	Guard Spacer	2	83	63827	1.4_.50dp	Ø 1/4" x 1/2" Dowel Pin	2
16	71029	MX2A-S	Mounting Frame	1	84	63510	1.4_1.00dp	1/4 x 1" Dowel Pin	2
17	71030	MX2B-S	Plunger Frame	1	85	63055	5.16-18_1.00bh	5/16-18 x 1" Button Hd Cap Screw	1
18	74343	MX3	Ram	1					
19	74344	MX4-S	Cam (1 5/8" Up Stroke)	1					
20	74438	MX5-S	Cam Rack	1					
21	74346	MX6	Gear Arm	1					
22	74347	MX7	Cam Pin	1					
23	74350	MX8	Cam Roller	1					
24	74351	MX10-S	Rack Pad	2					
25	74352	MX11	Gib	2					
26	74356	MX12	Feed Finger Pivot Pin	1					
27	74360	MX13	Adjusting Bar	1					
28	74361	MX14-S	Feed Finger Arm	1					
29	74362	MX15-S	Feed Finger Guide	1					
30	74364	MX16	Retainer	1					
31	60899	MX17-CF977	Feed Finger	1					
32	74371	MX18-S	Swing Arm	1					
33	74376	MX25	Stroke Adjustment Screw	1					
34	74384	MX29-S	Slide Support	1					
35	74388	MX30-S	Support Anchor	1					
36	74390	MX32-S	Support Cover	1					
37	74407	MX33	Mounting Post	1					
38	74409	MX35	Insulation Dial	1					
39	74411	MX36	Dial Spacer	1					
40	74412	MX44	Locating Dowel	1					
41	74415	MX45-S	Feed Finger Spring	1					
42	74416	MX47-S	Cam (1 5/8" Down stroke)	1					
43	74417	MX48-S	Cam (1 1/8" Up Stroke)	1					
44	74419	MX50	Safety Pivot Pin	3					
45	74420	MX52	Pivot Pin	2					
46	74425	MX84-S	Brake Cam	1					
47	74426	MX85-S	Cam Pivot Pin	1					
48	75178	MX87-S	Lift Arm	1					
49	74430	MX88-S	Lever	1					
50	74614	MX90-S	Spring Bracket	1					
51	72310	MX104	Wave Disc Spring	1					
52	74611	LE-037CD-6	Extension Spring	1					
53	75083	Irving 3100-18	External Retaining Ring	2					
54	77322	LC-045E-10-M	Spring	2					
55	70739	McMaster-Carr #3126A53	Spring Plunger	2					
56	72519	McMaster Carr #98029A043	#8 Hardened Washer	2					
57	74447	McMaster-Carr #98296A109	Expansion Pin (1/16 x 1/2")	1					
58	73785	SPI 99-602-5	#10 Black Knurled Knob	2					
59	62040	1.8_1.00rp	1/8" x 1" Roll Pin	1					
60	63792	6-32_.25bh	#6-32 x 1/4" Button Hd Cap Screw	2					
61	63207	6-32_.25sh	#6-32 x 1/4" Socket Hd Cap Screw	7					
62	63209	6-32_.38sh	#6-32 x 3/8" Socket Hd Cap Screw	2					
63	63210	8fw	#8 Flatwasher	1					
64	60265	8-32_.19sh	#8-32 x 3/16" Socket Hd Cap Screw	1					
65	63163	8-32_.25sh	#8-32 x 1/4" Socket Hd Cap Screw	1					
66	61472	8-32_.38bh	#8-32 x 3/8" Button Hd Cap Screw	6					
67	63161	8-32_.38sh	#8-32 x 3/8" Socket Hd Cap Screw	3					
68	63052	8-32_.50fh	#8-32 x 1/2" Flat Hd Cap Screw	2					

Note:  
 1) Items marked in "Bold Italic" = High wear tooling.  
 2) Use OEM replacement tooling only.



Approved For Tooling 6/27/2013

REV	REVISION	BY/DATE	APPORATION	SCALE	CAD FILE	CHECKED BY	DATE	DRAWN BY	DATE
1				1:1					29May13