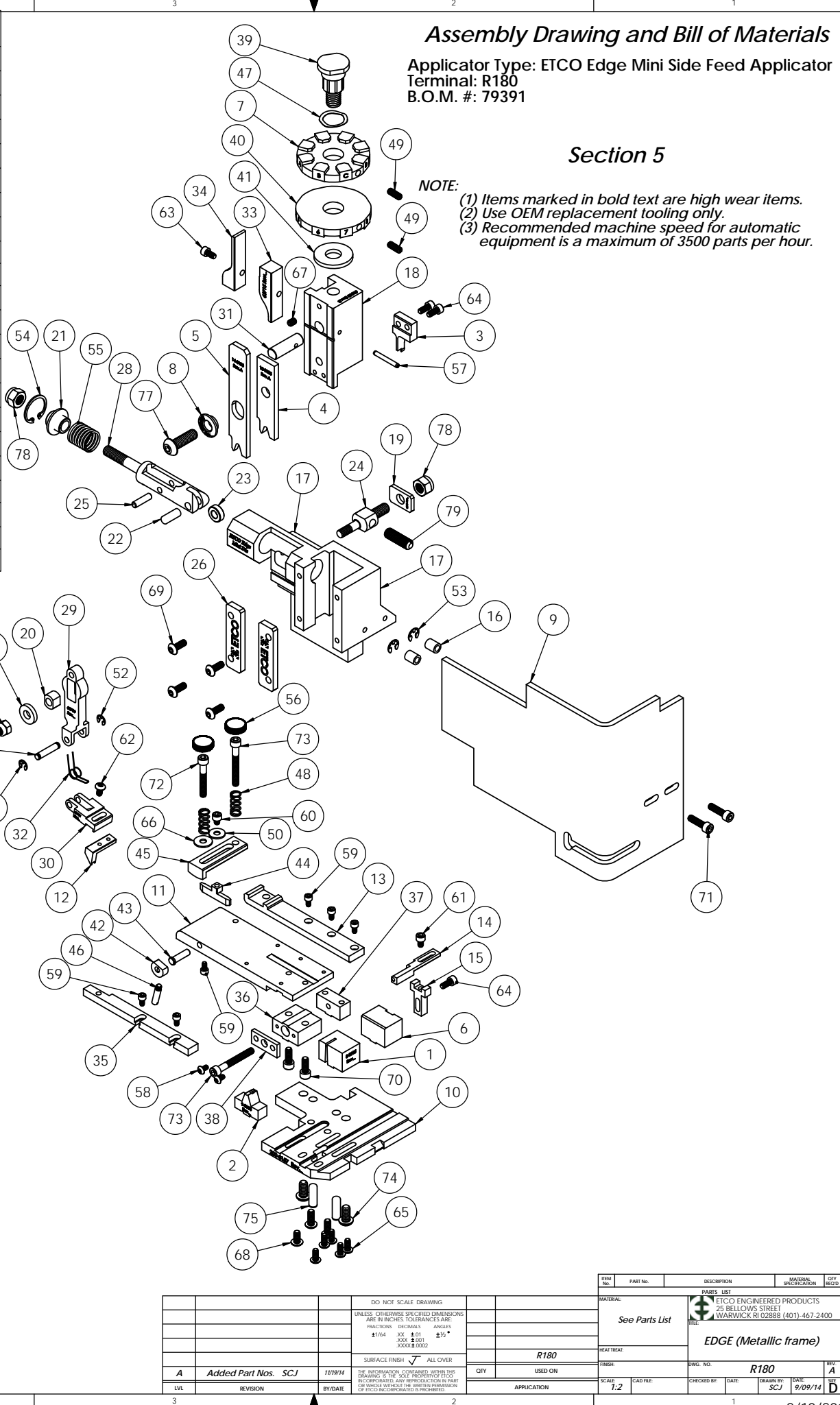


ITEM NO.	QTY.	Part_Code	PART NUMBER	DESCRIPTION
1	1	71208	8-3105	Cut-off Die
2	1	71200	9-3105	Anvil
3	1	71209	12-3105	Cut-off Punch
4	1	71204	13-3105	Wire Roll Tool
5	1	71205	14-3105	Insulation Roll Tool
6	1	74802	26-3000	Backup Block
7	1	70842	34-3025	Wire Crimp Dial
8	1	64217	159S-3002	Insulation Tool Spacer
9	1	76403	199-3005	Safety Guard
10	1	64211	200-3157	Baseplate
11	1	71199	250-3105	Feed Plate
12	1	71193	303-3105	Feed Finger
13	1	71196	500-3105	Rear Guide Rail
14	1	76681	1600A-3002	Adjustable Stripper Block
15	1	74803	1600B-3000	Adjustable Stripper Holder
16	2	74491	GS-375	Guard Spacer
17	1	63660	ED2-M	Frame
18	1	63658	ED3	Plunger
19	1	63709	ED4	Retainer
20	1	63731	ED5	Feed Adjustment Guide Block
21	1	63714	ED6	Spring Retainer
22	1	63733	ED7	Cam Roll Pin
23	1	63706	ED8	Cam Roller
24	1	63704	ED9	Feed Adjustment Block
25	1	64245	ED10	Feed Arm Pin
26	2	63717	ED11	Gib
27	1	63701	ED12	Feed Finger Shaft
28	1	63705	ED13	Adjustable Feed Piston
29	1	63700	ED14	Feed Arm
30	1	63702	ED16	Feed Finger Retainer
31	1	63659	ED44	Locating Dowel
32	1	63732	ED45	Feed Finger Spring
33	1	63715	ED51	Post-feed Cam
34	1	63716	ED52	Pre-feed Cam
35	1	74840	MX28-1-S	Front Guide Rail
36	1	74384	MX29-S	Slide Support
37	1	74388	MX30-S	Support Anchor
38	1	74390	MX32-S	Support Cover
39	1	74407	MX33	Mounting Post
40	1	74409	MX35	Insulation Dial
41	1	74411	MX36	Dial Spacer
42	1	74425	MX84-S	Brake Cam
43	1	74426	MX85-S	Cam Pivot Pin
44	1	74428	MX86-S	Brake Shoe
45	1	75178	MX87-S	Lift Arm
46	1	74430	MX88-S	Lever
47	1	72310	MX104	Wave Disc Spring
48	2	77322	LC-045E-10-M	Spring
49	2	70739	McMaster-Carr #3126A53	Spring Plunger
50	1	72519	McMaster Carr #98029A043	#8 Hardened Washer
51	1	64213	McMaster Carr #98370A28	1/4" Hardened Flatwasher
52	2	72069	McMaster Carr #98407A118	#8 E-Style Retaining Ring
53	2	64214	McMaster Carr #98407A122	#10 E-Style Retaining Ring
54	1	63734	McMaster Carr #98455A_122	Retaining Ring
55	1	63735	MS24585-1453	Piston Spring
56	2	73785	SPI 99-602-5	#10 Black Knurled Knob
57	1	62040	1.8_1.00rp	1/8" x 1" Roll Pin

ITEM NO.	QTY.	Part_Code	PART NUMBER	DESCRIPTION
58	2	63792	6-32_.25bh	#6-32 x 1/4" Button Hd Cap Screw
59	6	63207	6-32_.25sh	#6-32 x 1/4" Socket Hd Cap Screw
60	1	60265	8-32_.19sh	#8-32 x 3/16" Socket Hd Cap Screw
61	1	63163	8-32_.25sh	#8-32 x 1/4" Socket Hd Cap Screw
62	1	77097	8-32_.31bh	#8-32 x 5/16" Button Hd Cap Screw
63	1		8-32_.31sh	#8-32 x 5/16" Socket Hd Cap Screw
64	3	63161	8-32_.38sh	#8-32 x 3/8" Socket Hd Cap Screw
65	5	61472	8-32_.38bh	#8-32 x 3/8" Button Hd Cap Screw
66	1	63753	10fw	#10 Flatwasher
67	1	63054	10-32_.25ss	#10-32 x 1/4" Socket Hd Set Screw
68	1	78993	10-32_.38bh	#10-32 x 3/8" Button Hd Cap Screw
69	6	76501	10-32_.50bh	#10-32 x 1/2" Button Hd Cap Screw
70	2	63056	10-32_.50sh	#10-32 x 1/2" Socket Hd Cap Screw
71	2	64215	10-32_.69sh	#10-32 x 11/16" Socket Hd Cap Screw
72	1	77396	10-32_1.25sh	#10-32 x 1 1/4" Socket Hd Cap Screw
73	2	63826	10-32_1.50sh	#10-32 x 1 1/2" Socket Hd Cap Screw
74	2	63632	1.4-20_.50bh	1/4-20 x 1/2" Button Hd Cap Screw
75	2	64215	1.4_.75dp	1/4" x 3/4" Dowel Pin
76	1	63707	1.4_20 LN	1/4-20 Lock Nut
77	1	63055	5.16-18_1.00bh	5/16-18 x 1" Button Hd Cap Screw
78	2	63708	5.16-18 LN	5/16-18 Lock Nut
79	1	64216	5.16-24_1.00ssf	5/16-24 x 1" Socket Hd Set Screw

**NOTE: ITEMS MARKED IN BOLD TEXT ARE HIGH WEAR ITEMS**



**Assembly Drawing and Bill of Materials**

Applicator Type: ETCO Edge Mini Side Feed Applicator  
Terminal: R180  
B.O.M. #: 79391

**Section 5**

**NOTE:**  
(1) Items marked in bold text are high wear items.  
(2) Use OEM replacement tooling only.  
(3) Recommended machine speed for automatic equipment is a maximum of 3500 parts per hour.

REV	DATE	DESCRIPTION	BY	CHKD	APP'D
A	9/09/14	Added Part Nos. SCJ	SCJ		

DO NOT SCALE DRAWING		UNLESS OTHERWISE SPECIFIED DIMENSIONS ARE IN INCHES TOLERANCES ARE FRACTIONS DECIMALS ANGLES	
1/16" .001" .015"		XXX .001" .015"	
SURFACE FINISH		ALL OVER	
R180		R180	
SCALE	1:2	CAD FILE	DATE
APPLICATION		CHECKED BY	DATE
		DESIGNED BY	DATE

ETCO ENGINEERED PRODUCTS 25 BELLOWS STREET WARWICK, RI 02888 (401)-467-2400	EDGE (Metallic frame)
---	-----------------------