



**REFERENCE LIST:  
R174E  
ECC APPLICATOR  
BILL OF MATERIAL NUMBER  
79463**

**WARNING !**  
NEVER OPERATE  
THIS OR ANY APPLICATOR  
WITHOUT SAFETY GUARD  
IN POSITION.

PART CODE	PART NUMBER	QUANTITY	DESCRIPTION
78353	11-165-FS	(1)	PLUNGER
77918	1102-FS	(1)	FLOATING SHANK
76812	*12-162	(1)	CUT-OFF PUNCH
77811	*13-248-1	(1)	WIRE ROLLING TOOL
78350	17-245	(1)	SPACER
75713	11B1	(1)	CAM ROLLER BRACKET
75719	1142	(1)	CAM ROLLER BEARING
74422	314L-9A	(1)	CAM BODY
77106	312-1	(1)	CAM TAPER PIN
74402	310	(1)	CLOCK SPRING
73706	311-1	(1)	ROLL PIN
77381	169-9	(2)	UNIVERSAL GIB
77789	250-320	(1)	DIE PLATE
78348	202-R174E	(1)	BASE PLATE
74761	1600-171	(1)	STRIPPER
76889	101-77	(1)	TOP CASTING
73972	408-699	(1)	BRAKE SPACER
74676	407	(1)	SPRING
74675	406	(1)	COTTER PIN
74673	404	(1)	BRAKE CAM
78354	403-227	(1)	BRAKE BODY
74496	402	(1)	BRAKE SPRING RETAINER
74495	401	(1)	BRAKE SHAFT
77049	306-1	(1)	FEED FINGER STOP
74393	305	(1)	FEED FINGER ARM
73214	304-340	(1)	REAR SPACER
74400	308	(1)	FEED SHAFT
76859	307-6	(1)	SPRING
74325	303	(1)	FEED FINGER
73319	302-160	(1)	FRONT SPACER
76873	301-4	(1)	SHOULDER SCREW
74949	500-259	(1)	RIGHT GUIDE
75343	1000-142	(1)	LEFT GUIDE
76807	*8-199	(1)	DIE
70081	16-063	(1)	SPACER
78135	*9-218-1	(1)	WIRE ANVIL
76795	179A	(1)	GUARD

**NOTE: ITEMS MARKED WITH AN \*  
ARE HIGH WEAR ITEMS**



**REFERENCE LIST:  
R174E  
ECC APPLICATOR  
BILL OF MATERIAL NUMBER  
79463**

**WARNING !  
NEVER OPERATE  
THIS OR ANY APPLICATOR  
WITHOUT SAFETY GUARD  
IN POSITION.**

<b>PART CODE</b>	<b>PART NUMBER</b>	<b>QUANTITY</b>	<b>DESCRIPTION</b>
		(13)	8-32 X 3/8" S.H.C.S.
		(4)	8-32 X 1/2" S.H.C.S.
		(2)	8-32 X 7/8" S.H.C.S.
		(1)	8-32 X 3/8" S.S.S.
		(1)	3/16 X 3/4" DOWEL
		(1)	10-32 X 1" S.H.C.S.
		(1)	10-32 X 1 1/2" S.H.C.S.
		(1)	5/16 X 3/4" SHOULDER SCREW
		(1)	1/4-28 X 1/2" S.H.C.S.
		(1)	1/4-28 X 5/8" S.S.S.
		(1)	1/4-28 JAM NUT
		(2)	1/4-20 X 1" S.H.C.S.
		(2)	1/4 X 1" DOWEL
		(2)	1/4-20 X 1/4" S.S.S.

**NOTE: ITEMS MARKED WITH AN \*  
ARE HIGH WEAR ITEMS**

*ECC APPLICATOR  
REAR FEED  
R174E*

8-32 X 3/8 S.H.C.S. (4)

LEFT GUIDE  
1000-142  
75343

RIGHT GUIDE  
500-259  
74949

3/16 X 3/4 DOWEL

FEED PLATE  
250-320  
77789

8-32 X 1/2 S.H.C.S. (4)

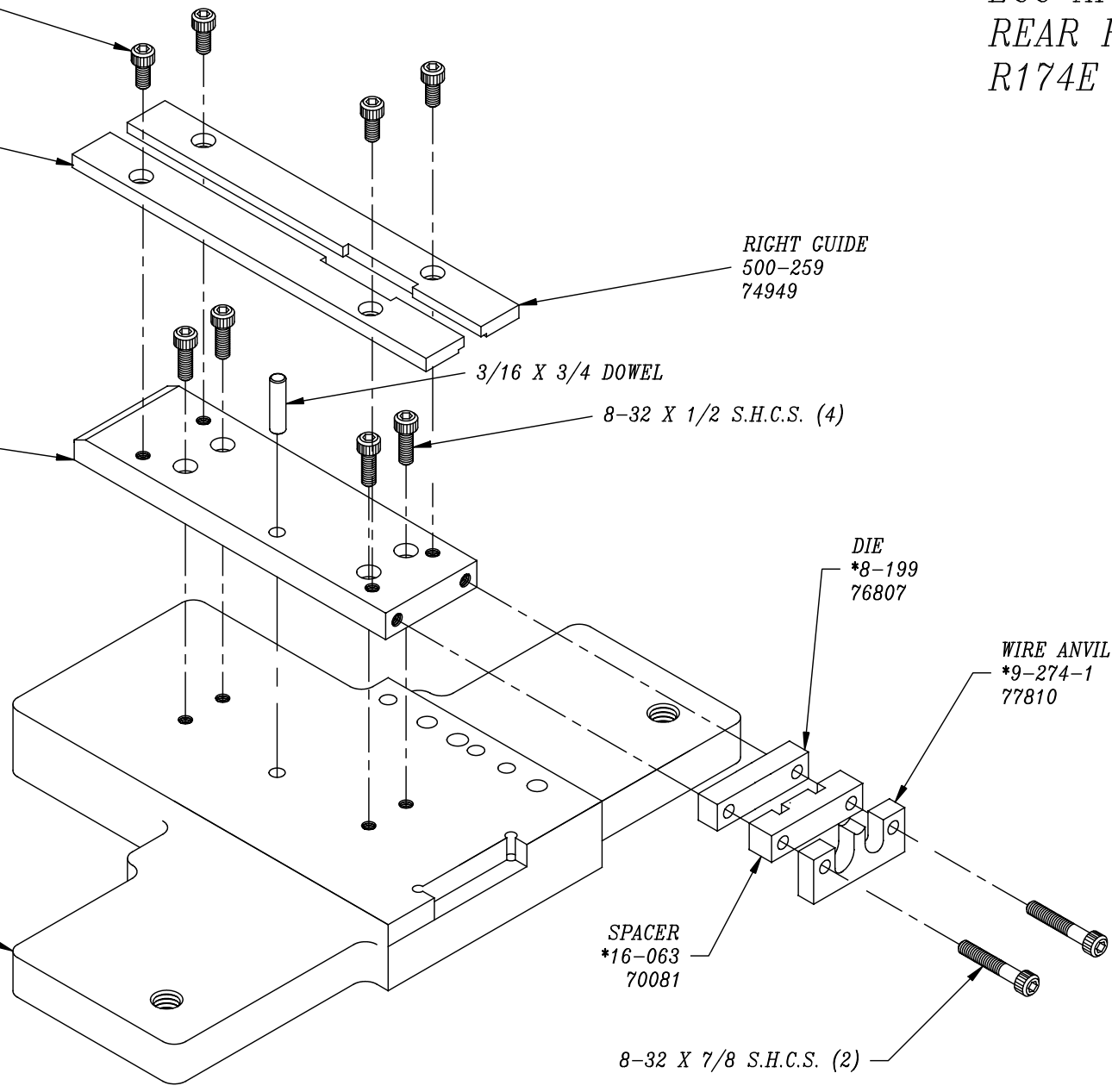
DIE  
\*8-199  
76807

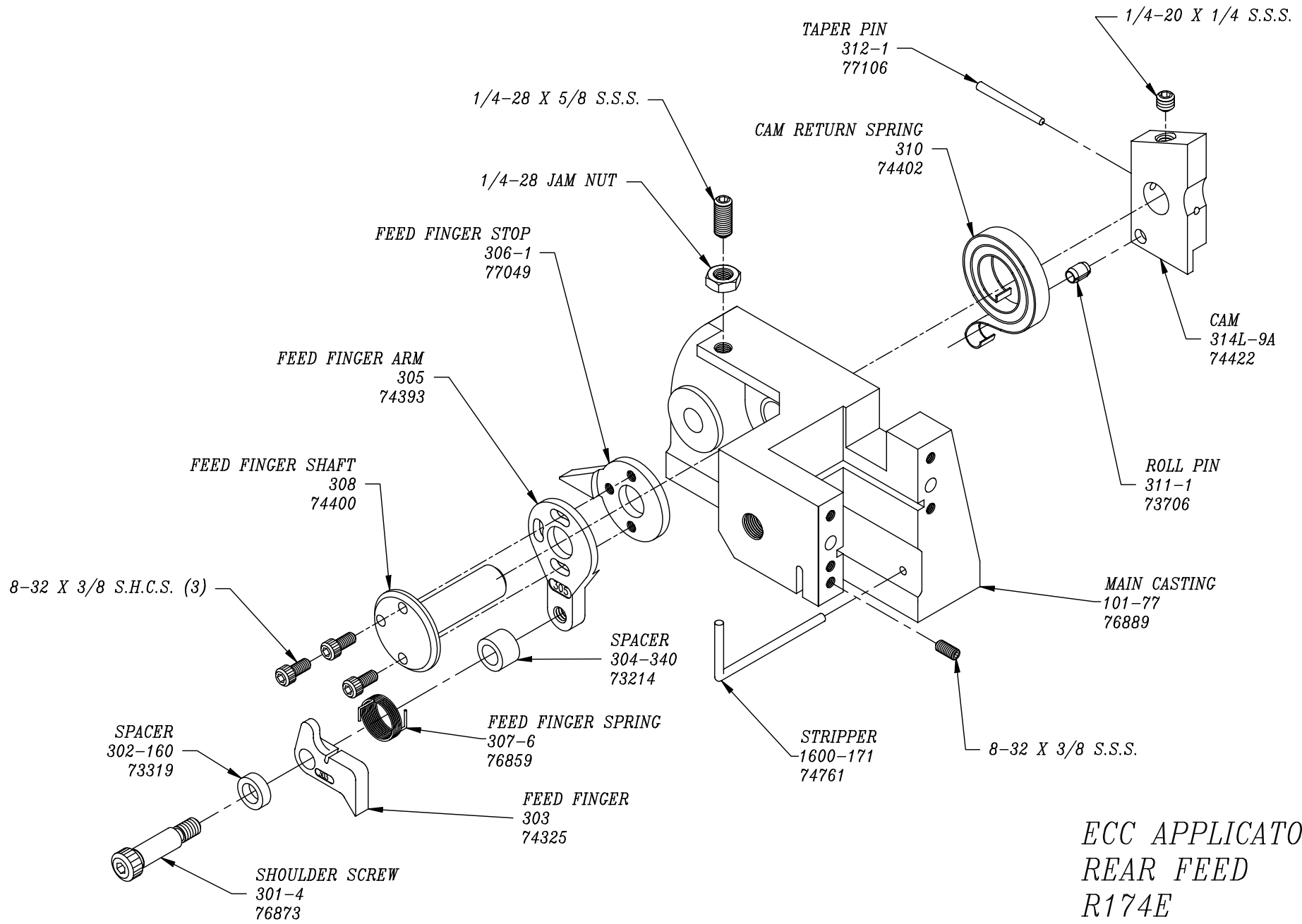
WIRE ANVIL  
\*9-274-1  
77810

BASE PLATE  
202-R174E  
78348

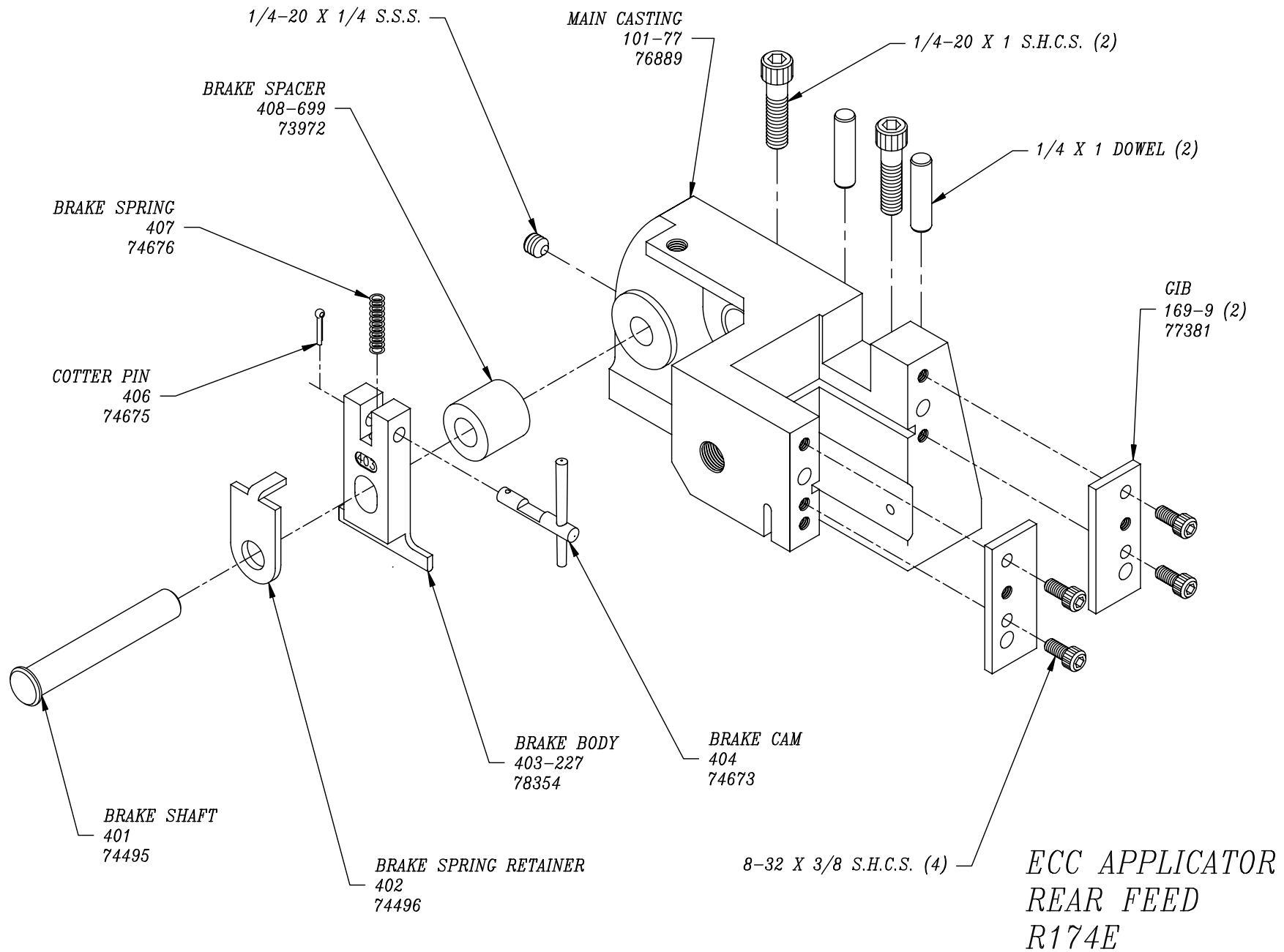
SPACER  
\*16-063  
70081

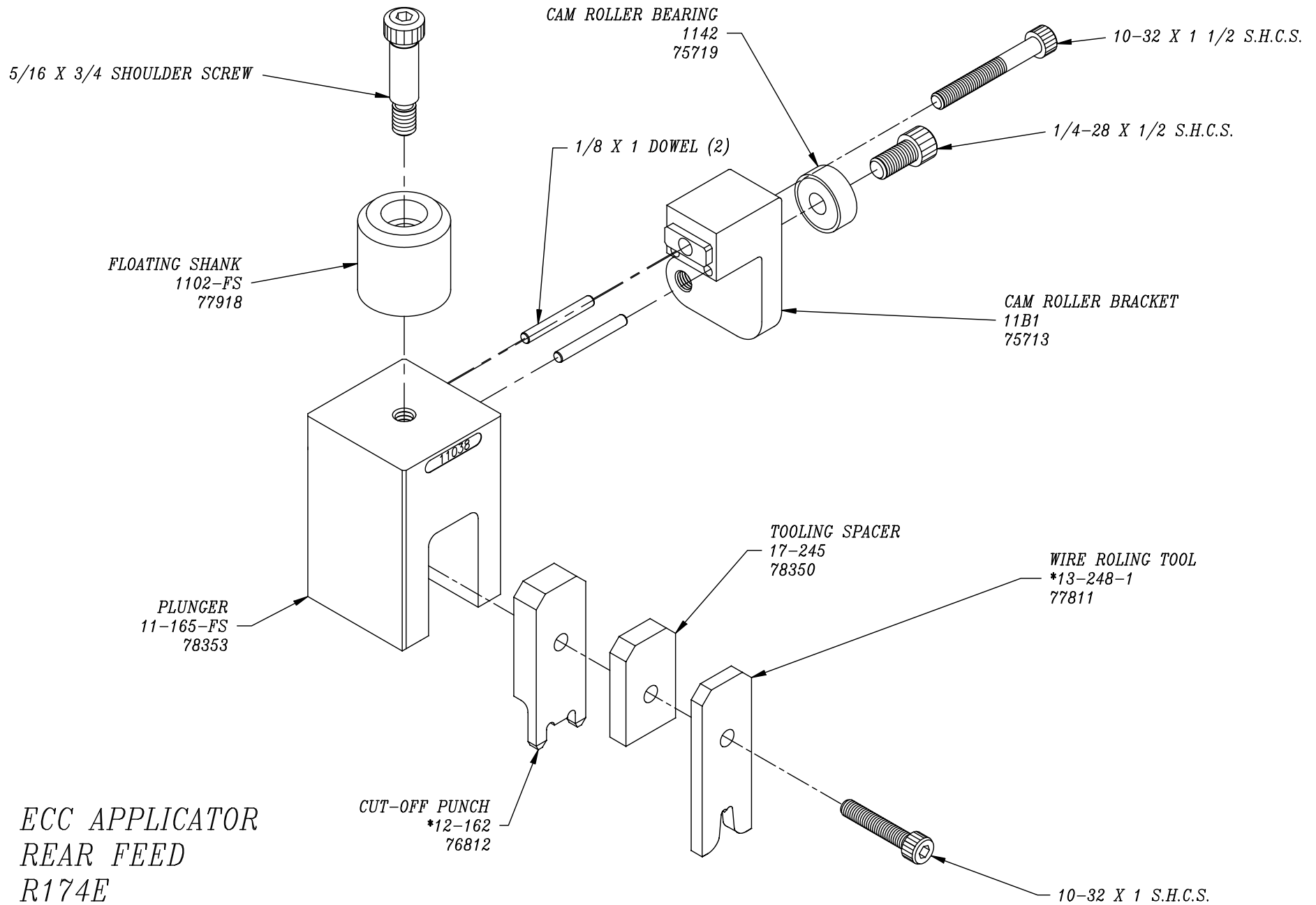
8-32 X 7/8 S.H.C.S. (2)





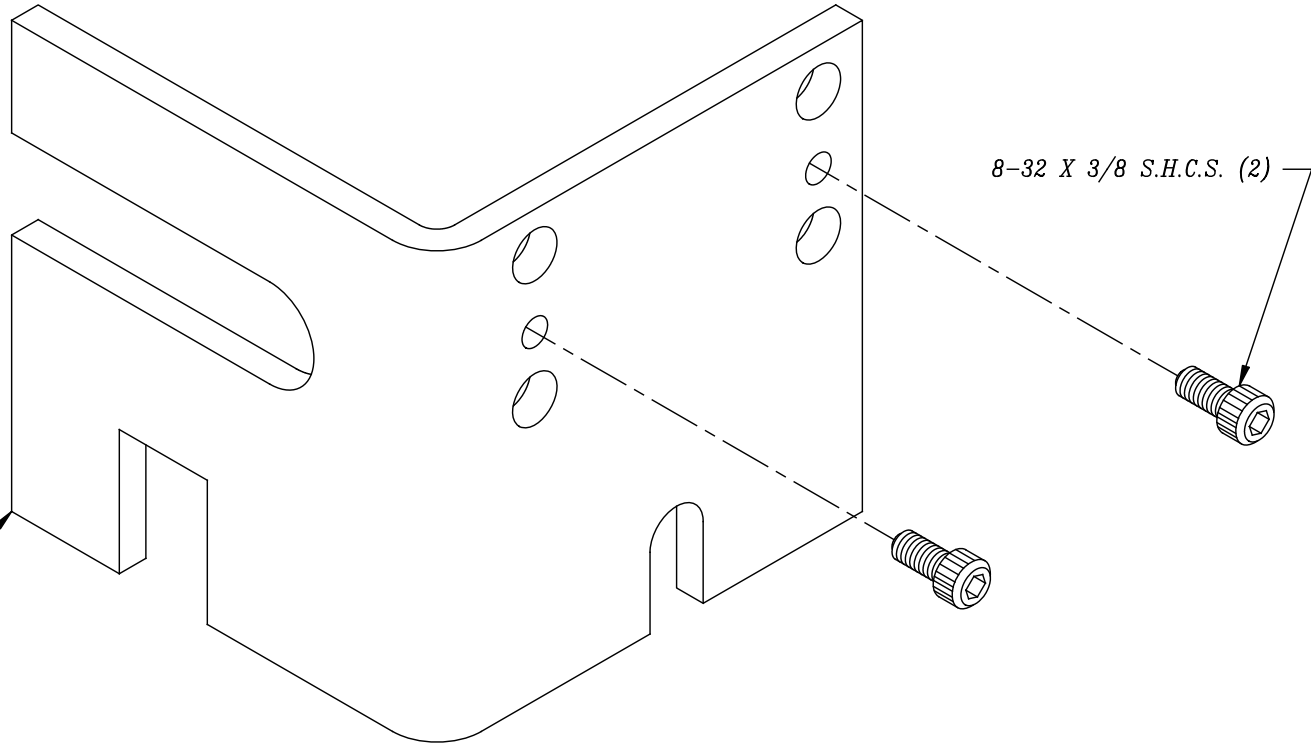
ECC APPLICATOR  
 REAR FEED  
 R174E





ECC APPLICATOR  
REAR FEED  
R174E

GUARD  
179A  
7



8-32 X 3/8 S.H.C.S. (2)

ECC APPLICATOR  
REAR FEED  
R174E