



**REFERENCE LIST:
R280
ECC APPLICATOR
BILL OF MATERIAL NUMBER
79467**

**WARNING !
NEVER OPERATE
THIS OR ANY
APPLICATOR
WITHOUT SAFETY
GUARD IN POSITION.**

| PART CODE | PART NUMBER | QUANTITY | DESCRIPTION |
|-----------|----------------|----------|-------------------------|
| 75496 | 1101-FS | (1) | PLUNGER |
| 77918 | 1102-FS | (1) | FLOATING SHANK |
| 75729 | 1156 | (1) | CUT-OFF SCREW |
| 75728 | 1155 | (1) | ADJUST SCREW |
| 75724 | 1150 | (1) | INSULATION BLOCK |
| 75710 | 1125 | (1) | CAM ROLLER BRACKET |
| 75719 | 1142 | (1) | CAM ROLLER BEARING |
| 75810 | *12-314 | (1) | CUT-OFF PUNCH |
| 78280 | *13-537 | (1) | WIRE ROLLING TOOL |
| 73130 | *14-1-D240-260 | (1) | INSULATION ROLLING TOOL |
| 74410 | 314L-2 | (1) | CAM |
| 74403 | 311 | (1) | SPRING PIN |
| 74404 | 312 | (1) | CAM TAPER PIN |
| 74402 | 310 | (1) | CAM RETURN SPRING |
| 73899 | 101 | (1) | TOP CASTING |
| 76969 | 169 | (2) | UNIVERSAL GIBS |
| 74675 | 406 | (1) | COTTER PIN |
| 74676 | 407 | (1) | BRAKE SPRING |
| 76866 | 408-750 | (1) | BRAKE BUSHING |
| 74673 | 404 | (1) | BRAKE CAM |
| 74498 | 403-1 | (1) | BRAKE BODY |
| 74496 | 402 | (1) | SPRING RETAINER |
| 74495 | 401 | (1) | BRAKE SHAFT |
| 74396 | 306 | (1) | FEED FINGER STOP |
| 74393 | 305 | (1) | FEED FINGER ARM |
| 74400 | 308 | (1) | FEED SHAFT |
| 76460 | 304-425 | (1) | REAR SPACER |
| 76859 | 307-6 | (1) | SPRING |
| 75836 | 303-164 | (1) | FEED FINGER |
| 76863 | 302-074 | (1) | FRONT SPACER |
| 76873 | 301-4 | (1) | SHOULDER SCREW |
| 73952 | 231 | (2) | STRIPPER SPRING |
| 75866 | 1600-339 | (1) | WIRE STOP AND STRIPPER |
| 73955 | 235 | (1) | GUIDE SPACER BLOCK |
| 75837 | 500-458 | (1) | REAR / RIGHT GUIDE |
| 75392 | 1000 | (1) | FRONT / LEFT GUIDE |

**NOTE: ITEMS MARKED WITH AN *
ARE HIGH WEAR ITEMS**



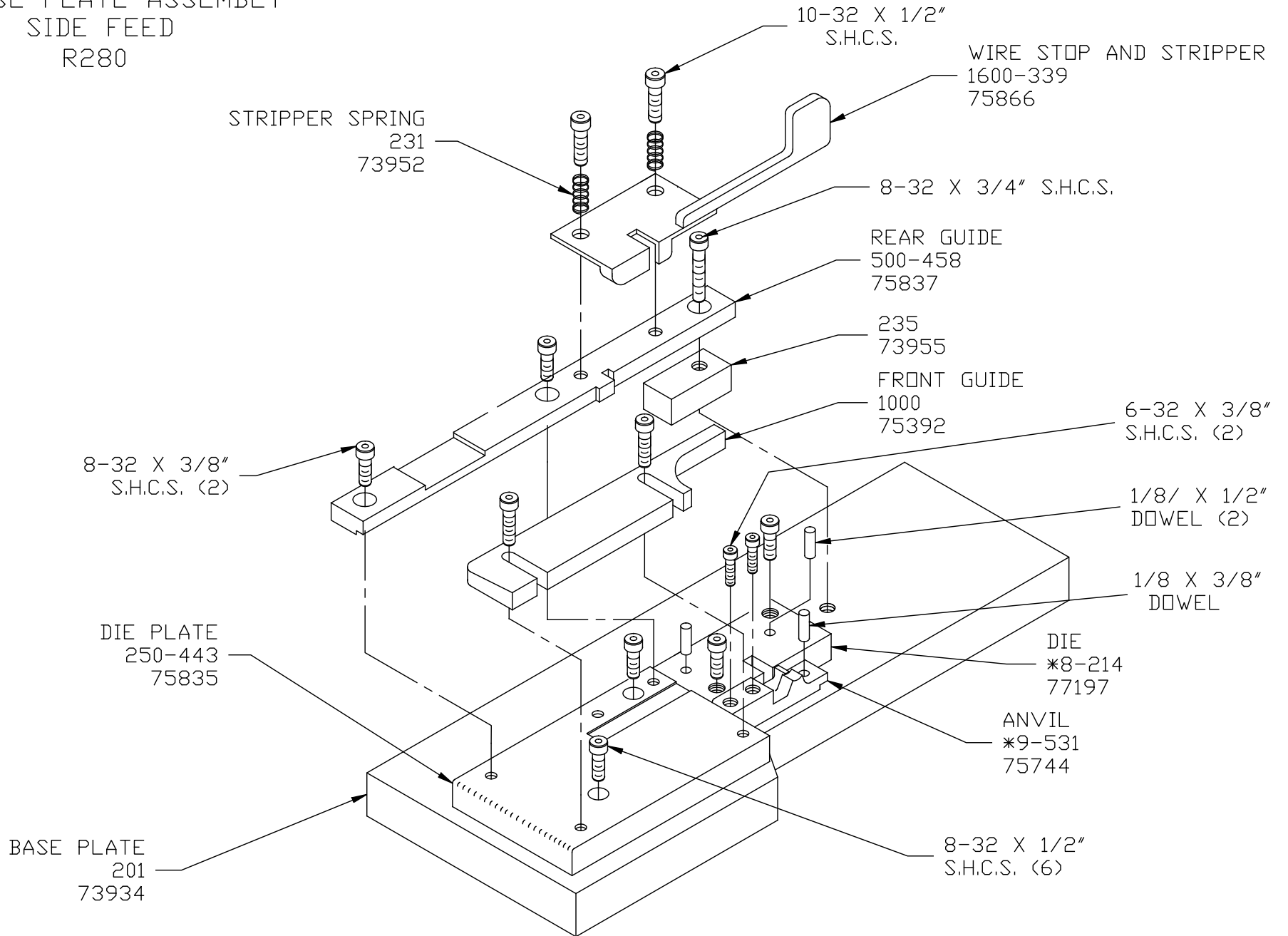
REFERENCE LIST:
R280
ECC APPLICATOR
BILL OF MATERIAL NUMBER
79467

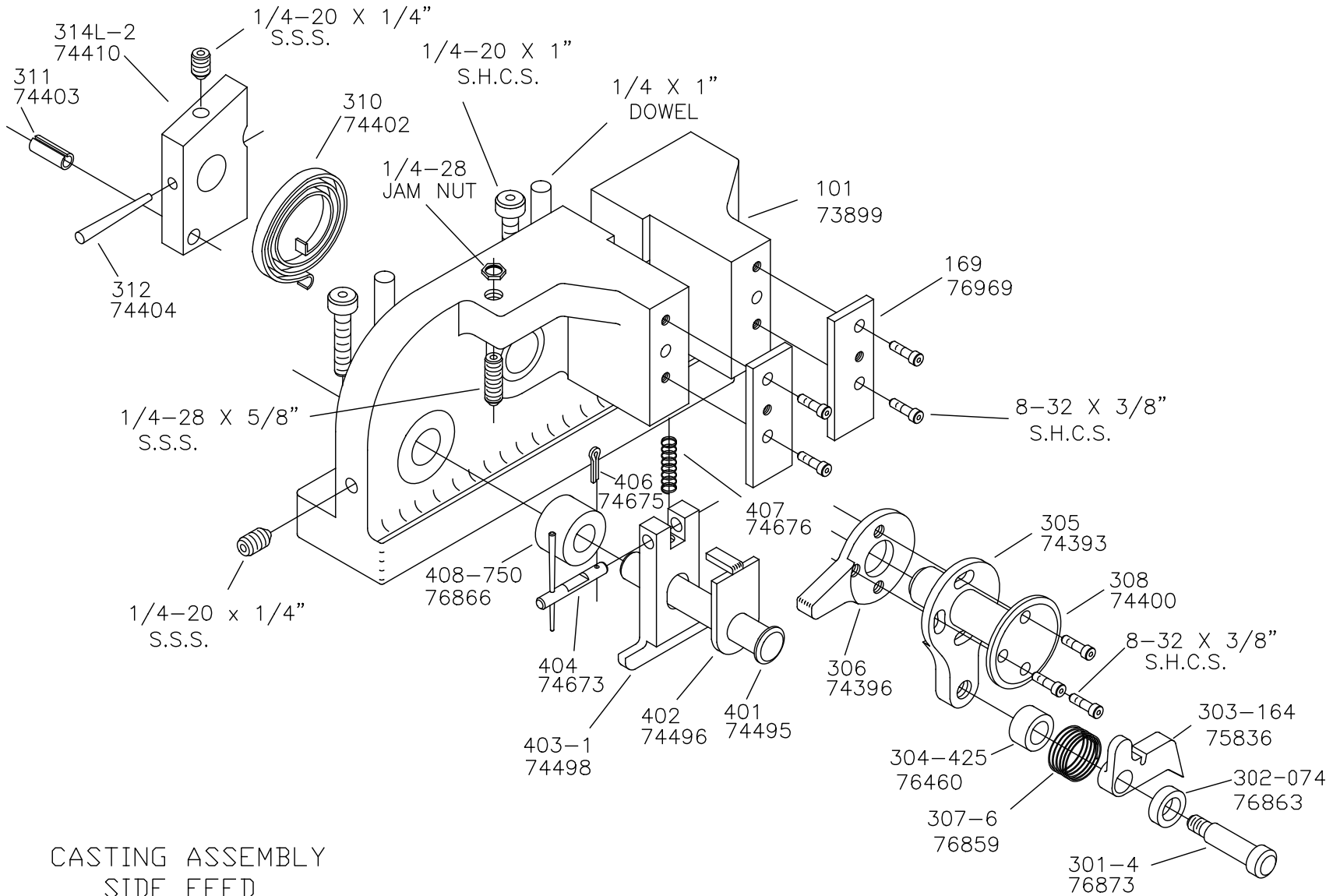
WARNING !
NEVER OPERATE
THIS OR ANY
APPLICATOR
WITHOUT SAFETY
GUARD IN POSITION.

| PART CODE | PART NUMBER | QUANTITY | DESCRIPTION |
|-----------|-------------|----------|----------------------------|
| 75835 | 250-443 | (1) | DIE PLATE |
| 73934 | 201 | (1) | BASE PLATE |
| 77197 | 8-214 | (1) | DIE |
| 75744 | *9-531 | (1) | ANVIL |
| 76186 | 1800 | (1) | STOCK CHUTE |
| | | N/A | GUARD SPACER |
| 75834 | 176-56 | (1) | GUARD |
| | | | |
| | | | |
| | | (1) | 10-32 X 1 1/4" S.H.C.S. |
| | | (1) | 1/4-28 X 1/2" S.H.C.S. |
| | | (2) | 1/8 X 1" DOWEL |
| | | (1) | 5/16 X 3/4" SHOULDER SCREW |
| | | (2) | 1/4-20 X 1" S.H.C.S. |
| | | (2) | 1/4-20 X 1/4" S.S.S. |
| | | (2) | 1/4 X 1" DOWEL |
| | | (1) | 1/4-28 JAM NUT |
| | | (1) | 1/4-28 X 5/8" S.S.S. |
| | | (12) | 8-32 X 3/8" S.H.C.S. |
| | | (2) | 10-32 X 1/2" S.H.C.S. |
| | | (1) | 8-32 X 3/4" S.H.C.S. |
| | | (2) | 6-32 X 3/8" S.H.C.S. |
| | | (6) | 8-32 X 1/2" S.H.C.S. |
| | | (2) | 1/8 X 1/2" DOWEL |
| | | (1) | 1/8 X 3/8" DOWEL |
| | | | |
| | | | |
| | | | |

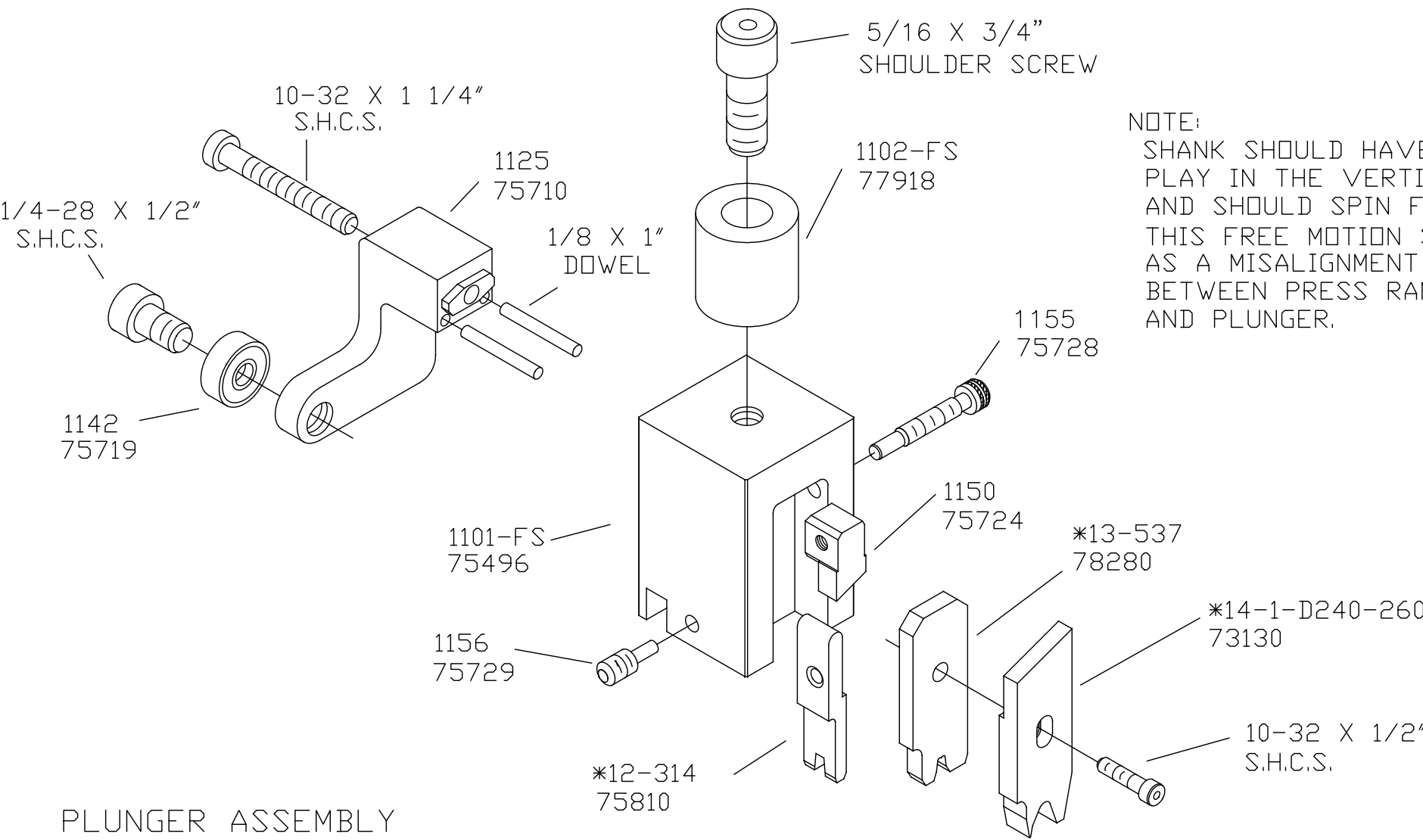
**NOTE: ITEMS MARKED WITH AN *
 ARE HIGH WEAR ITEMS**

BASE PLATE ASSEMBLY
SIDE FEED
R280





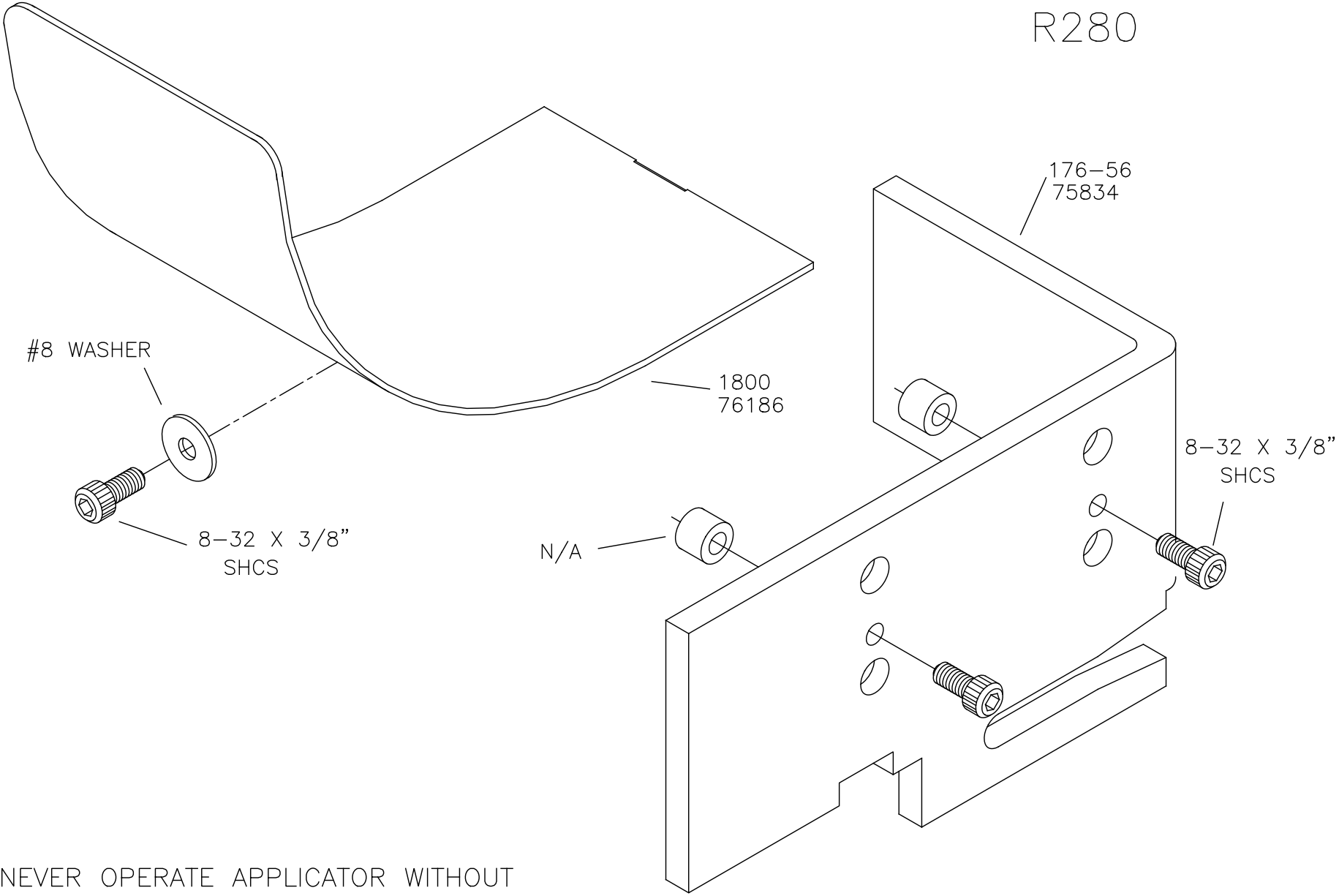
CASTING ASSEMBLY
 SIDE FEED
 R280



NOTE:
 SHANK SHOULD HAVE FREE
 PLAY IN THE VERTICAL AXIS
 AND SHOULD SPIN FREELY.
 THIS FREE MOTION SERVES
 AS A MISALIGNMENT COUPLING
 BETWEEN PRESS RAM
 AND PLUNGER.

PLUNGER ASSEMBLY
 SIDE FEED
 R280

CHUTE AND GUARD R280



NEVER OPERATE APPLICATOR WITHOUT
SAFETY GUARD IN POSITION.