



**REFERENCE LIST:
R176
2UP FEED
ECC APPLICATOR
BILL OF MATERIAL NUMBER
79478**

**WARNING !
NEVER OPERATE
THIS OR ANY
APPLICATOR
WITHOUT SAFETY
GUARD IN POSITION.**

PART CODE	PART NUMBER	QUANTITY	DESCRIPTION
77587	11-276	(1)	PLUNGER
74587	1102-FS-2	(1)	FLOATING SHANK
		N/A	CUT-OFF SCREW
		N/A	ADJUST SCREW
		N/A	INSULATION BLOCK
75710	1125	(1)	CAM ROLLER BRACKET
75719	1142	(1)	CAM ROLLER BEARING
		N/A	CUT-OFF PUNCH
		N/A	DRIVER
77590	*13-344	(1)	WIRE ROLLING TOOL
		N/A	INSULATION ROLLING TOOL
74410	314L-2	(1)	CAM
74403	311	(1)	SPRING PIN
74404	312	(1)	CAM TAPER PIN
74402	310	(1)	CAM RETURN SPRING
73899	101	(1)	TOP CASTING
76969	169	(2)	UNIVERSAL GIBS
74675	406	(1)	COTTER PIN
74676	407	(1)	BRAKE SPRING
74565	408-1.00	(1)	BRAKE BUSHING
74674	405	(1)	TAPER PIN
74673	404	(1)	BRAKE CAM
74498	403-1	(1)	BRAKE BODY
74496	402	(1)	SPRING RETAINER
74495	401	(1)	BRAKE SHAFT
77049	306-1	(1)	FEED FINGER STOP
74393	305	(1)	FEED FINGER ARM
74400	308	(1)	FEED SHAFT
77580	304-717	(1)	REAR SPACER
76861	307-14	(1)	SPRING
77585	303-163	(1)	FEED FINGER
77581	304-280	(1)	FRONT SPACER
77582	301-6	(1)	SHOULDER SCREW
73952	231	(2)	STRIPPER SPRING
77586	1600-336	(1)	WIRE STRIPPER / STOP
		N/A	GUIDE SPACER BLOCK

**NOTE: ITEMS MARKED WITH AN *
ARE HIGH WEAR ITEMS**



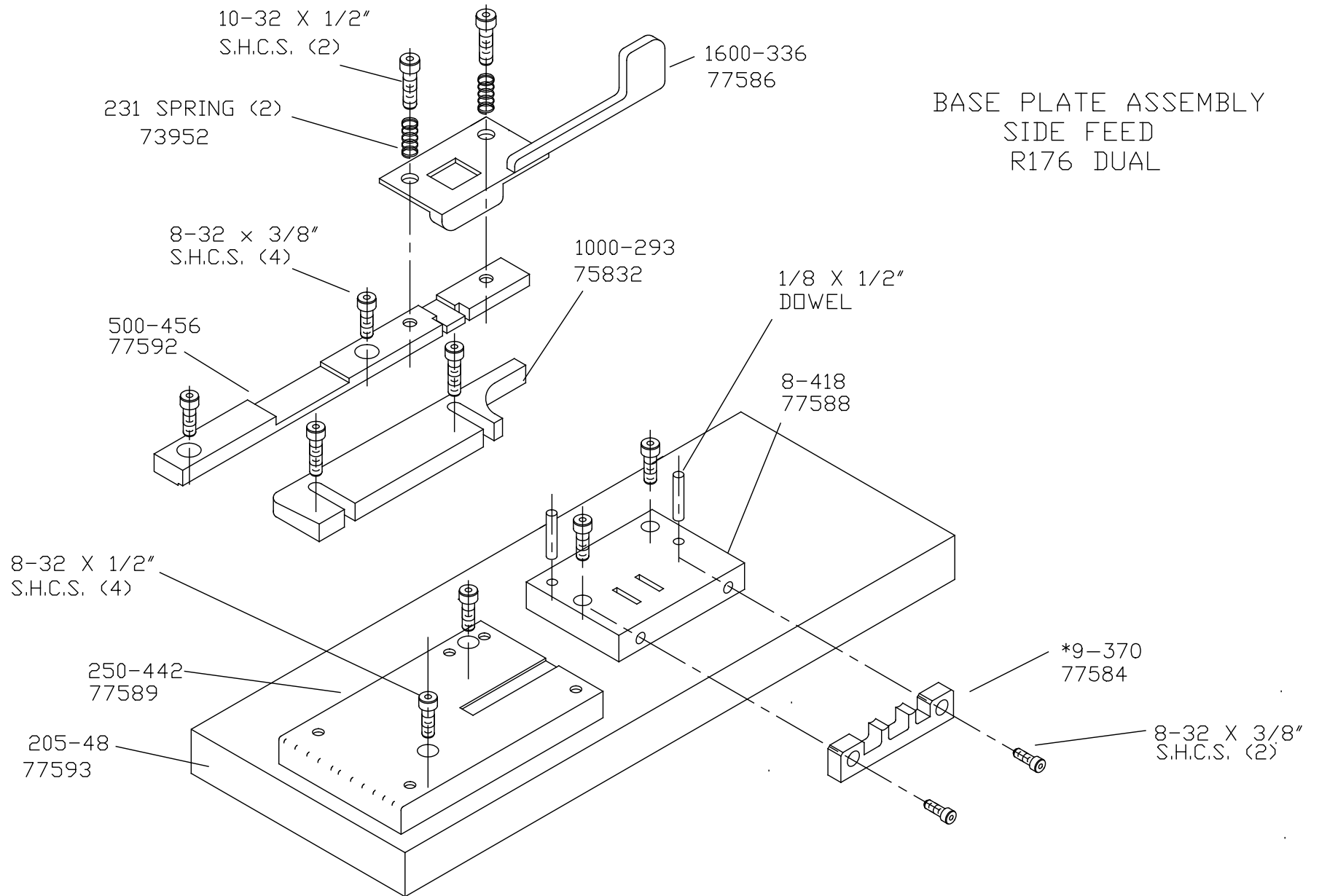
REFERENCE LIST:
R176
2UP FEED
ECC APPLICATOR
BILL OF MATERIAL NUMBER
79478

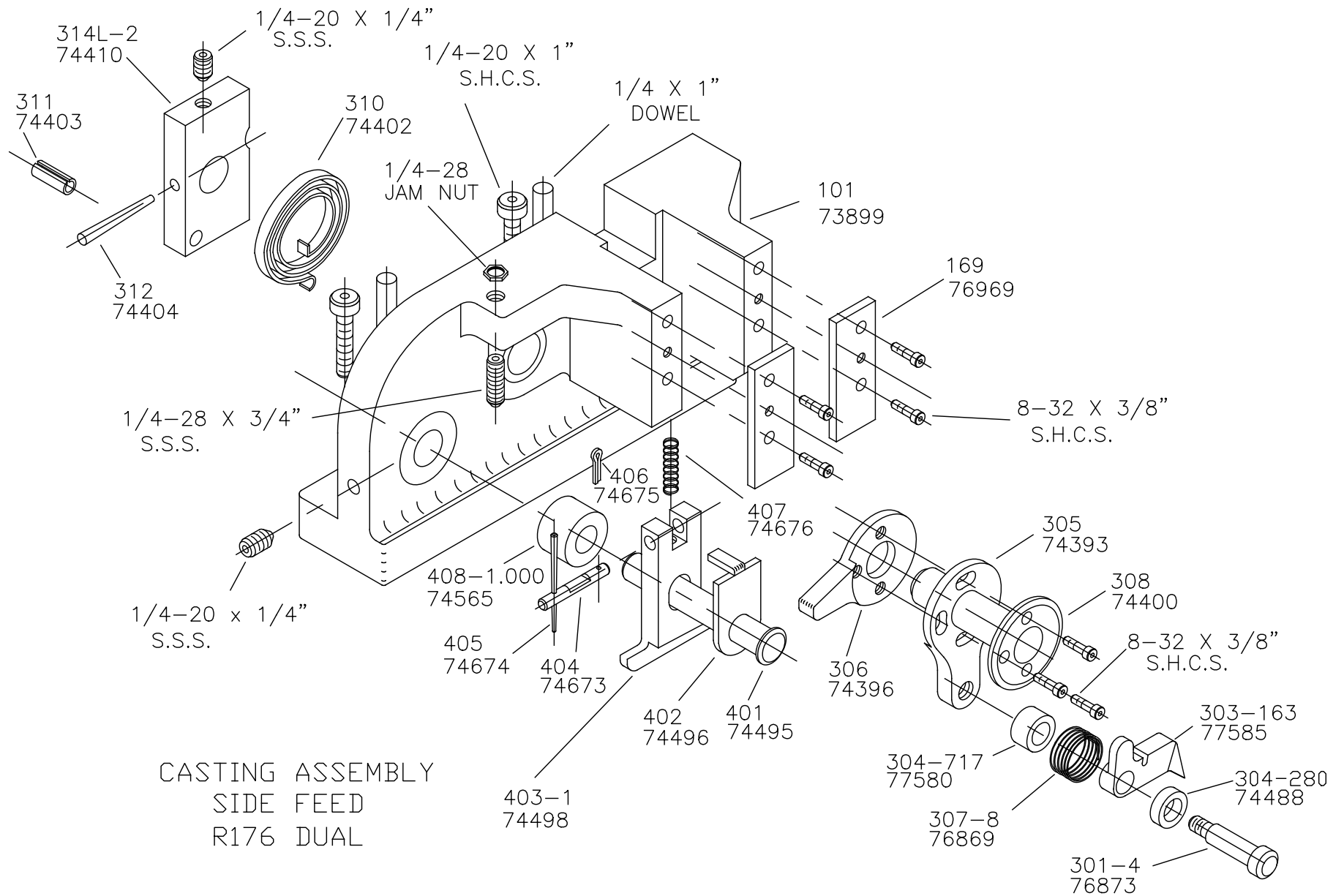
WARNING !
NEVER OPERATE
THIS OR ANY
APPLICATOR
WITHOUT SAFETY
GUARD IN POSITION.

PART CODE	PART NUMBER	QUANTITY	DESCRIPTION
77592	500-456	(1)	REAR / RIGHT GUIDE
75832	1000-293	(1)	FRONT / LEFT GUIDE
77589	250-442	(1)	FEED PLATE
77593	205-48	(1)	BASE PLATE
77591	*12-313	(1)	CUT OFF PUNCH
		N/A	CUT-OFF PAD SPRING
77588	8-418	(1)	CUT-OFF DIE
		N/A	REAR DIE
77584	*9-370	(1)	ANVIL
76186	1800	(1)	STOCK CHUTE
74478	GS-156	(1)	GUARD SPACER
74456	176-55	(1)	GUARD
		(1)	5/16 X 1 ¼ SHOULDER SCREW
		(1)	10-32 X 1 1/4" S.H.C.S.
		(1)	1/4-28 X 1/2" S.H.C.S.
		(2)	1/8 X 1" DOWEL
		(2)	10-32 X 1/2" S.H.C.S.
		(1)	1/4-28 X 3/4" S.S.S.
		(2)	1/4-20 X 1" S.H.C.S.
		(2)	1/4 X 1" DOWEL
		(1)	1/4-28 JAM NUT
		(2)	1/4-20 X 1/4" S.S.S.
		(11)	8-32 X 3/8" S.H.C.S.
		(2)	10-32 X 1/2" S.H.C.S.
		(6)	8-32 X 1/2" S.H.C.S.
		(2)	1/8 X 1/2" DOWEL
		(2)	8-32 X 1" S.H.C.S.

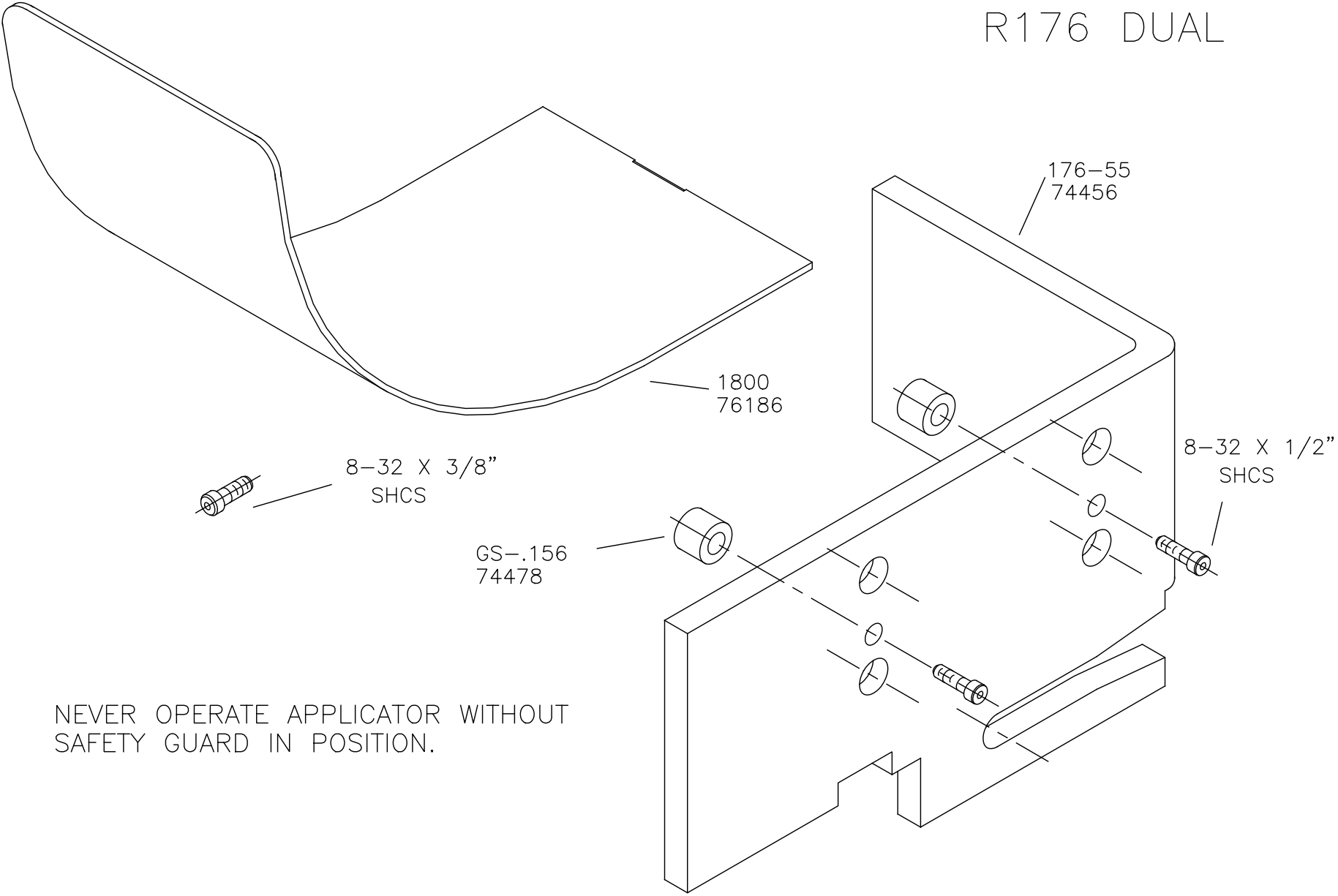
NOTE: ITEMS MARKED WITH AN *
ARE HIGH WEAR ITEMS

BASE PLATE ASSEMBLY
SIDE FEED
R176 DUAL

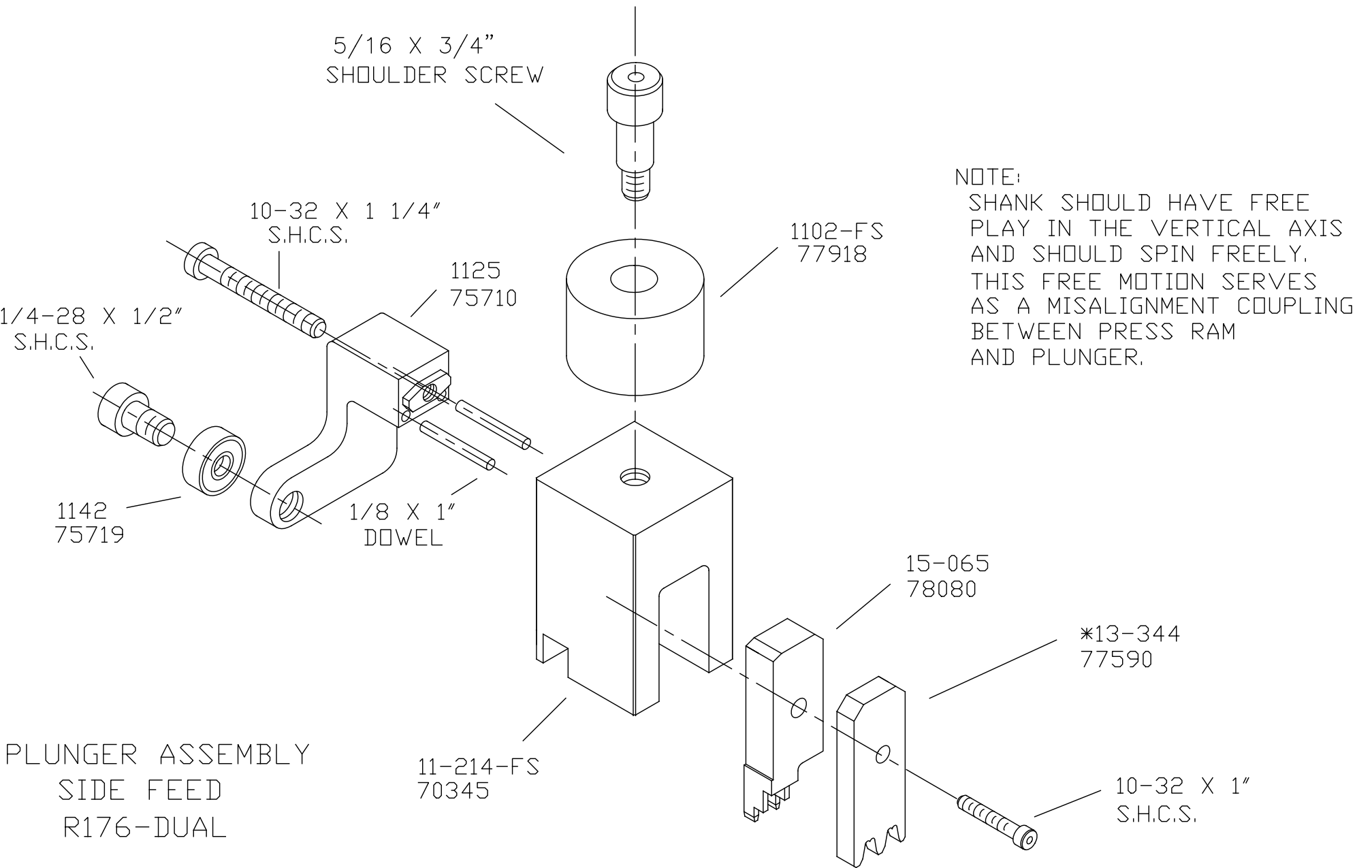




CHUTE AND GUARD R176 DUAL



NEVER OPERATE APPLICATOR WITHOUT
SAFETY GUARD IN POSITION.



PLUNGER ASSEMBLY
SIDE FEED
R176-DUAL