



REFERENCelist:
UB2N-FC-NEW
ECC APPLICATOR
REAR
79479

WARNING ! NEVER
OPERATE
THIS OR ANY APPLICATOR
WITHOUT SAFETY GUARD
IN POSITION.

PART CODE	PART NUMBER	QUANTITY	DESCRIPTION
75633	11-108	(1)	PLUNGER
77918	1102-FS	(1)	FLOATING SHANK
		N/A	ADJUST SCREW
		N/A	INSULATION BLOCK
73230	15-005	(1)	CUT-OFF PUNCH DRIVER
		N/A	CUT-OFF PUNCH
77117	*13-508	(1)	WIRE ROLLING TOOL
78010	TR-UB3R	(1)	TOOL RETAINER
		N/A	INSULATION ROLLING TOOL
75713	11B1	(1)	CAM ROLLER BRACKET
75719	1142	(1)	CAM ROLLER BEARING
74421	314-9	(1)	CAM BODY
77106	312-1	(1)	CAM TAPER PIN
74402	310	(1)	CLOCK SPRING
73706	311-1	(1)	ROLL PIN
76969	169	(1)	UNIVERSAL GIB
76543	169-20	(1)	GIB
73384	1600-271	(1)	STRIPPER
74315	101-35A-UB	(1)	TOP CASTING
70029	408-.730	(1)	BRAKE SPACER
74676	407	(1)	SPRING
74675	406	(1)	COTTER PIN
74674	405	(1)	TAPER PIN
74673	404	(1)	BRAKE CAM
74639	403-137	(1)	BRAKE BODY
74496	402	(1)	BRAKE SPRING RETAINER
74495	401	(1)	BRAKE SHAFT
74396	306	(1)	FEED FINGER STOP
76829	305-1	(1)	FEED FINGER ARM
76822	304-.450	(1)	REAR SPACER
74400	308	(1)	FEED SHAFT
76721	307-7	(1)	SPRING
70079	7A-UB3R	(1)	FEED FINGER
77603	302-.050	(1)	FRONT SPACER

**NOTE: ITEMS MARKED WITH AN *
 ARE HIGH WEAR ITEMS**

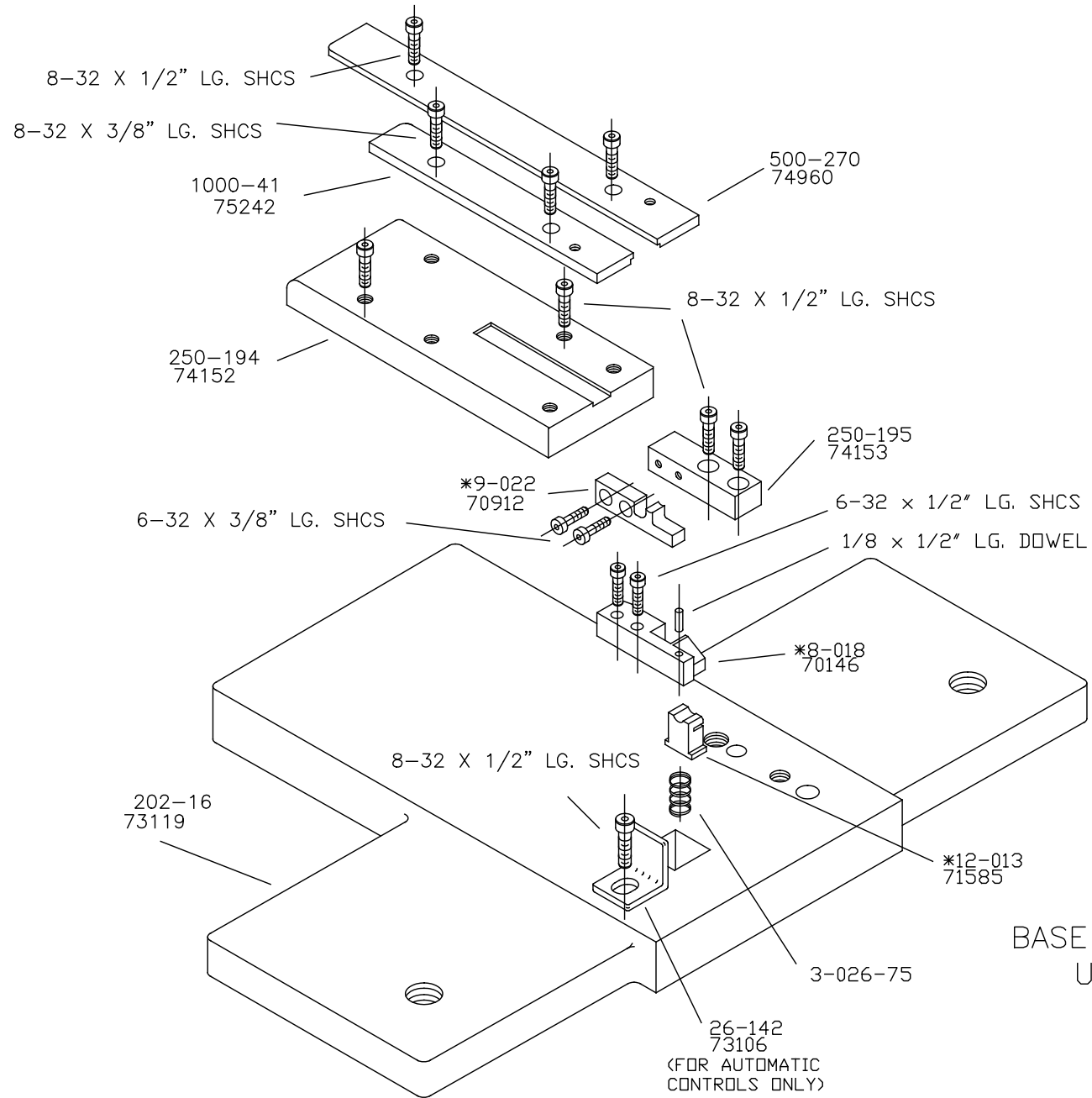


REFERENCelist:
UB2N-FC-NEW
ECC APPLICATOR
REAR
79479

WARNING ! NEVER
OPERATE
THIS OR ANY APPLICATOR
WITHOUT SAFETY GUARD
IN POSITION.

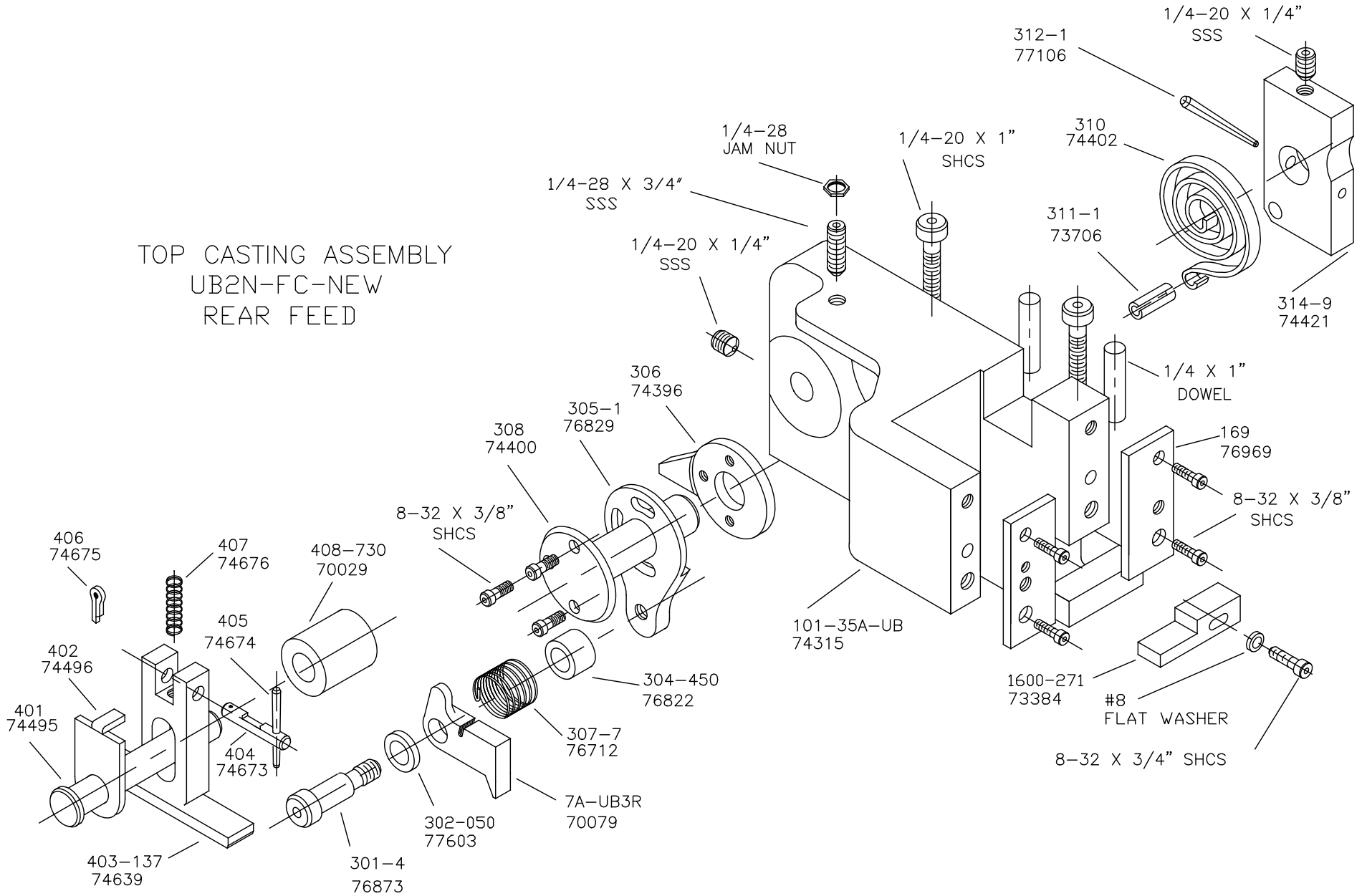
PART CODE	PART NUMBER	QUANTITY	DESCRIPTION
76873	301-4	(1)	SHOULDER SCREW
74960	500-270	(1)	RIGHT GUIDE
75242	1000-41	(1)	LEFT GUIDE
74152	250-194	(1)	DIE PLATE
73383	250-195	(1)	DIE PLATE (REAR)
70912	*9-022	(1)	ANVIL
70146	*8-018	(1)	DIE CUT-OFF RETAINER
71585	*12-013	(1)	CUT-OFF PUNCH PAD
76845	3-026-75	(1)	SPRING
73106	26-142	(1)	WIRE STOP (FOR AUTOMOTIVE CONTROLS)
73119	202-16	(1)	BASE PLATE
		N/A	GUARD SPACER
76795	179A	(1)	GUARD
		(1)	10-32 X 1 1/2" S.H.C.S.
		(1)	1/4-28 X 1/2" S.H.C.S.
		(2)	1/8 X 1" DOWEL
		(1)	5/16 X 3/4" SHOULDER SCREW
		(1)	1/4-28 X 3/4" S.S.S.
		(2)	1/4-20 X 1" S.H.C.S.
		(2)	1/4 X 1" DOWEL
		(1)	1/4-28 JAM NUT
		(2)	1/4-20 X 1/4" S.S.S.
		(9)	8-32 X 3/8" S.H.C.S.
		(1)	#8 FLAT WASHER
		(1)	8-32 X 3/4" S.H.C.S.
		(2)	6-32 X 3/8" S.H.C.S.
		(8)	8-32 X 1/2" S.H.C.S.
		(1)	1/8 X 1/2" DOWEL
		(2)	6-32 X 1/2" S.H.C.S.
		(1)	10-32 X 1" S.H.C.S.

**NOTE: ITEMS MARKED WITH AN *
 ARE HIGH WEAR ITEMS**

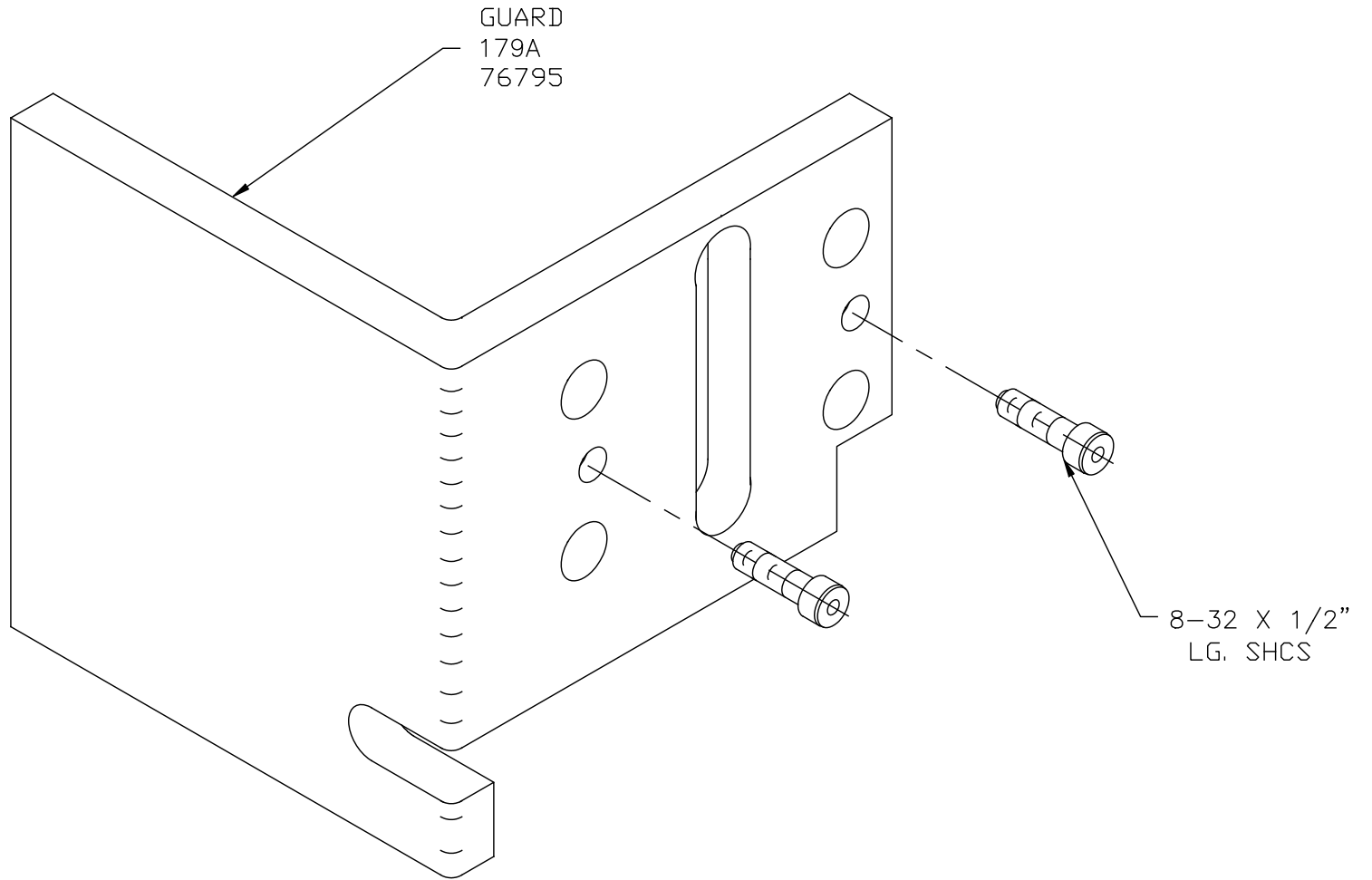


BASE PLATE ASSEMBLY
UB2N-FC-NEW
REAR FEED

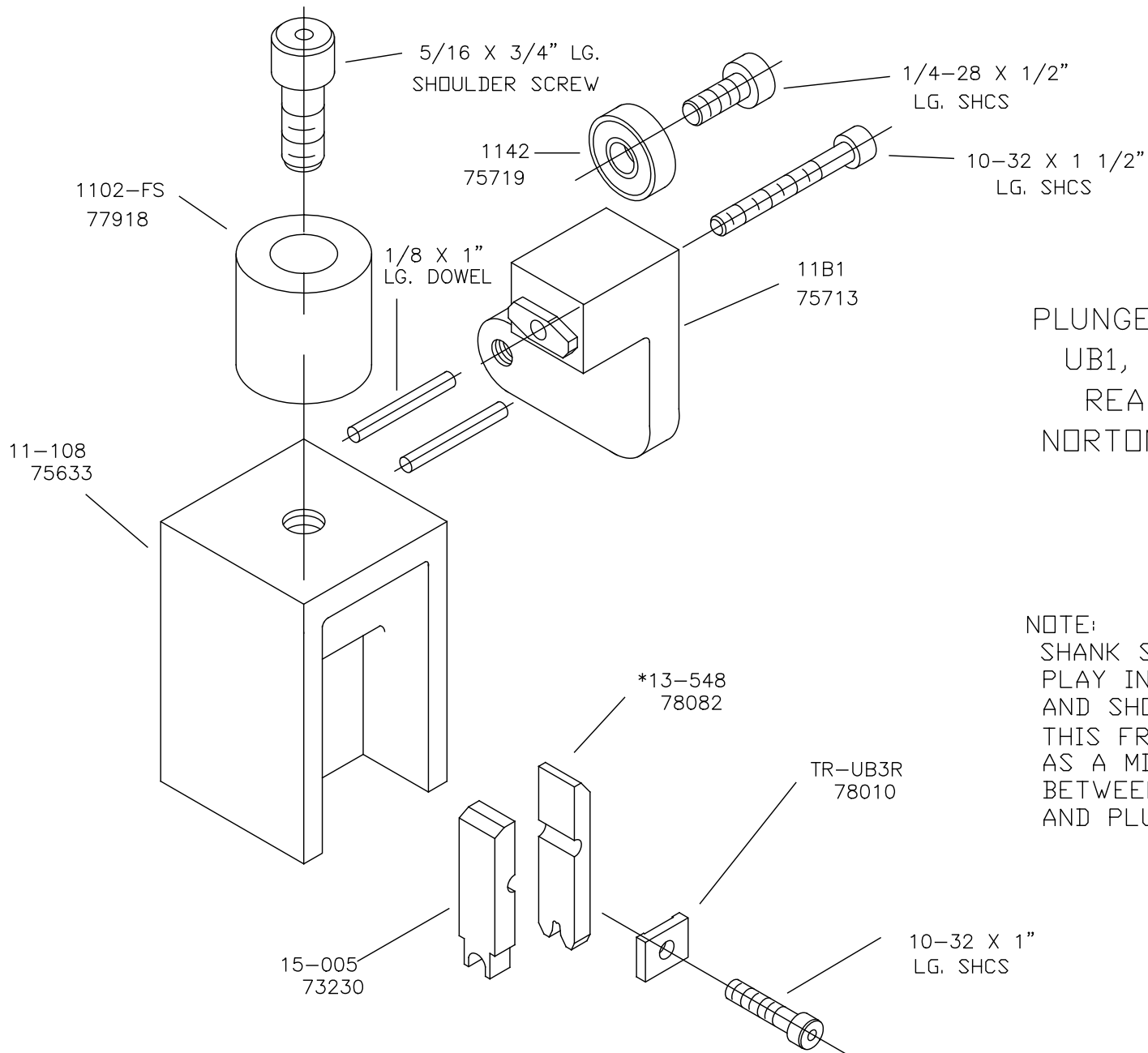
TOP CASTING ASSEMBLY
UB2N-FC-NEW
REAR FEED



ECC APPLICATOR-REAR
SAFETY GUARD
UB2N-FC-NEW



NEVER OPERATE APPLICATOR WITHOUT
SAFETY GUARD IN POSITION.



PLUNGER ASSEMBLY
 UB1, UB2, UB3
 REAR FEED
 NORTON COMPANY

NOTE:
 SHANK SHOULD HAVE FREE
 PLAY IN THE VERTICAL AXIS
 AND SHOULD SPIN FREELY.
 THIS FREE MOTION SERVES
 AS A MISALIGNMENT COUPLING
 BETWEEN PRESS RAM
 AND PLUNGER.