



REFERENCE LIST:  
 PCB-002  
 ECC APPLICATOR  
 BILL OF MATERIAL NUMBER  
 79484

**WARNING !**  
**NEVER OPERATE**  
**THIS OR ANY**  
**APPLICATOR**  
**WITHOUT SAFETY**  
**GUARD IN POSITION.**

PART CODE	PART NUMBER	QUANTITY	DESCRIPTION
75630	11-105-FS	(1)	PLUNGER
77096	21-032	(1)	CUT-OFF PUNCH RETAINER
74572	101-PCB	(1)	TOP CASTING
76969	169	(2)	UNIVERSAL GIBS
77918	1102-FS	(1)	FLOATING SHANK
75728	1155	(1)	ADJUST SCREW
75725	1150-1	(1)	INSULATION BLOCK
75710	1125	(1)	CAM ROLLER BRACKET
75719	1142	(1)	CAM ROLLER BEARING
74410	314-2	(1)	CAM
74403	311	(1)	SPRING PIN
74404	312	(1)	CAM TAPER PIN
74402	310	(1)	CAM RETURN SPRING
74675	406	(1)	COTTER PIN
74676	407	(1)	BRAKE SPRING
74575	408-1.060	(1)	BRAKE BUSHING
74674	405	(1)	TAPER PIN
74673	404	(1)	BRAKE CAM
70300	403-125-BW	(1)	BRAKE BODY
74496	402	(1)	SPRING RETAINER
74495	401	(1)	BRAKE SHAFT
74396	306	(1)	FEED FINGER STOP
76829	305-1	(1)	FEED FINGER ARM
74400	308	(1)	FEED SHAFT
74569	304-900	(1)	REAR SPACER
77060	307-20	(1)	SPRING
76717	7A-PCB	(1)	FEED FINGER
70078	302-100	(1)	FRONT SPACER
76923	301-6	(1)	SHOULDER SCREW
75874	1600-113	(1)	STRIPPER
74830	500-141	(1)	REAR GUIDE
74573	1000-36	(1)	FRONT GUIDE
74574	250-188	(1)	DIE PLATE
73939	205-1	(1)	BASE PLATE

**NOTE: ITEMS MARKED WITH AN \*  
 ARE HIGH WEAR ITEMS**

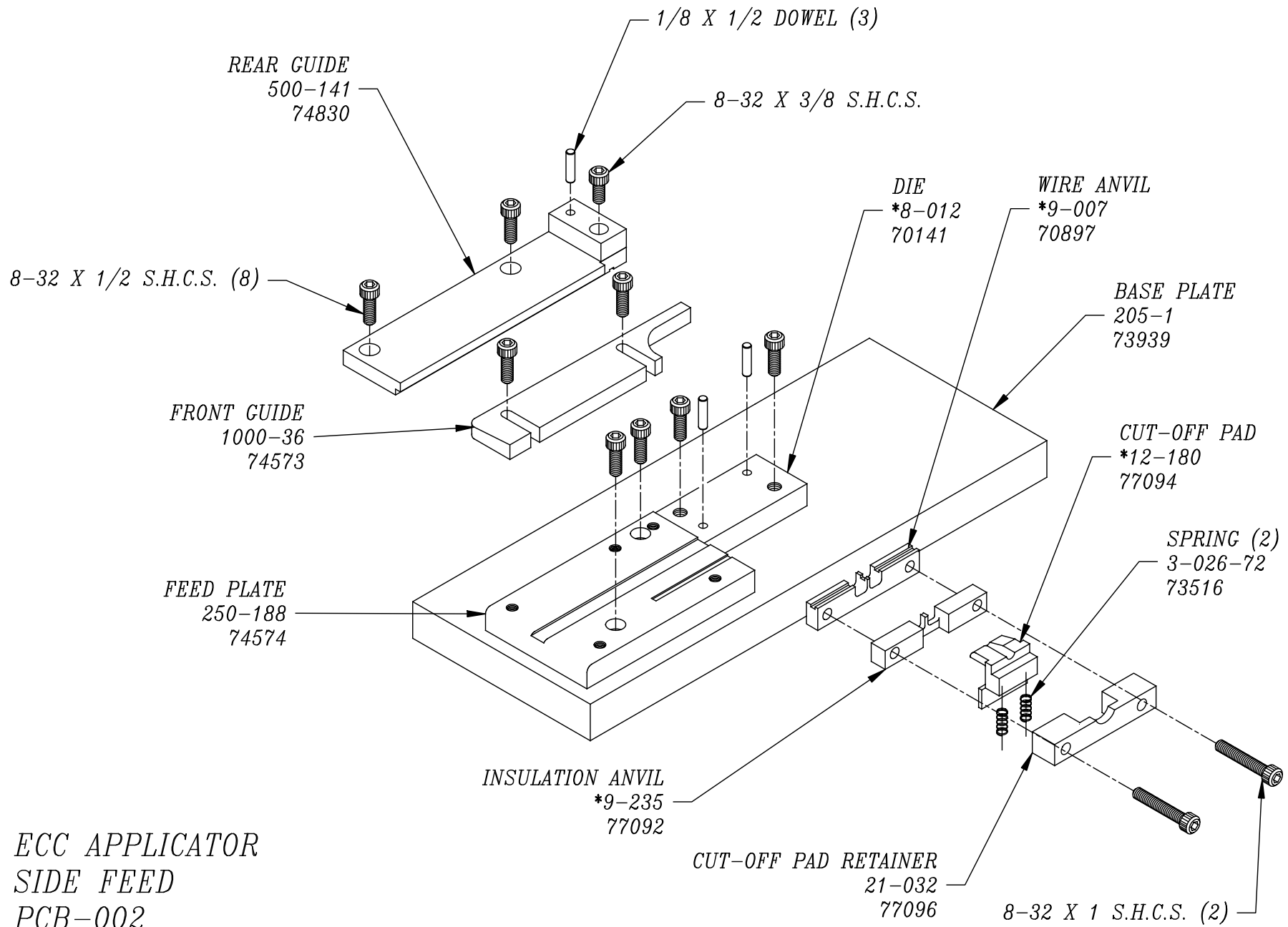


REFERENCE LIST:  
 PCB-002  
 ECC APPLICATOR  
 BILL OF MATERIAL NUMBER  
 79484

**WARNING !**  
**NEVER OPERATE**  
**THIS OR ANY**  
**APPLICATOR**  
**WITHOUT SAFETY**  
**GUARD IN POSITION.**

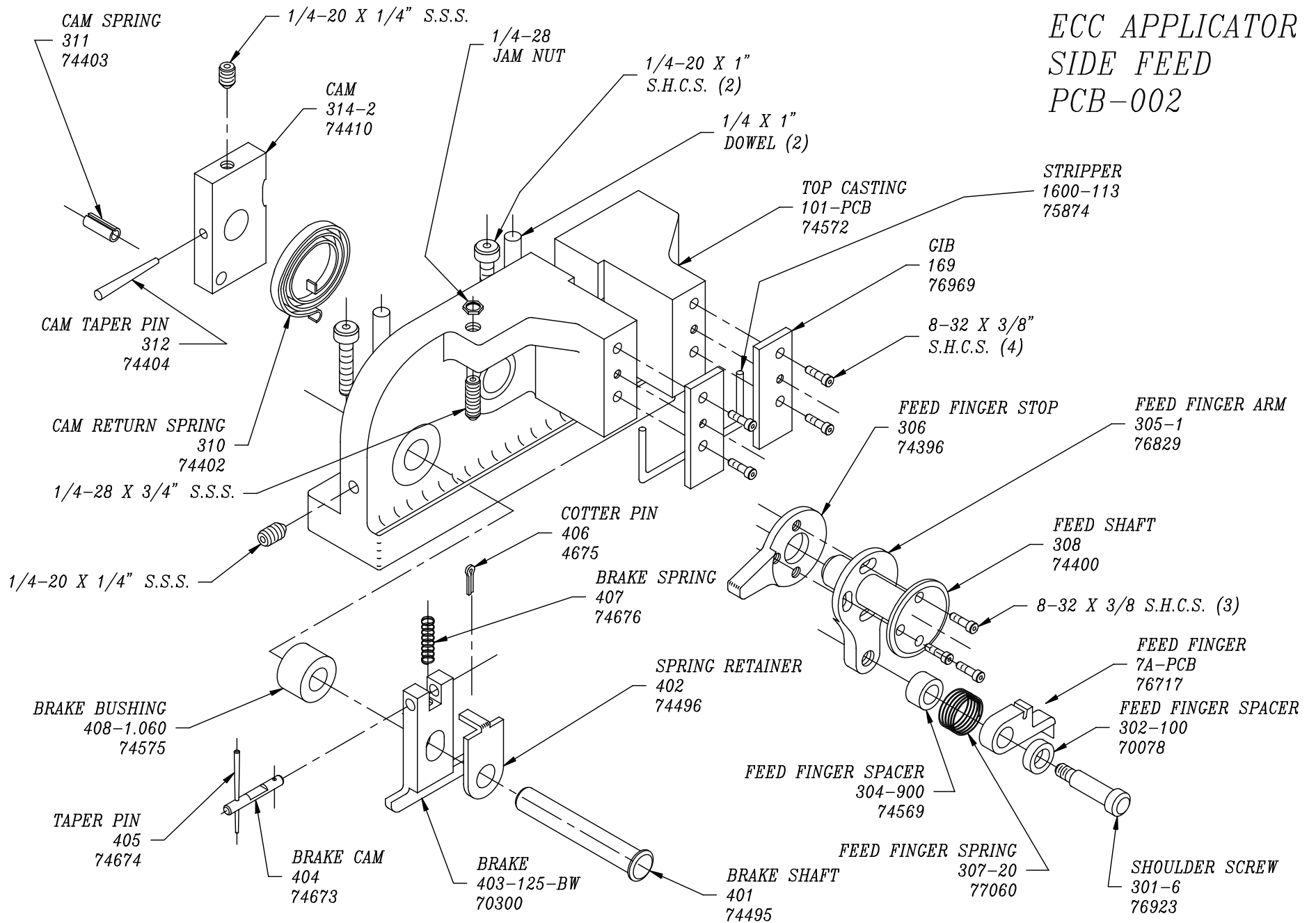
PART CODE	PART NUMBER	QUANTITY	DESCRIPTION
70141	*8-012	(1)	DIE
70897	*9-007	(1)	ANVIL
77092	*9-235	(1)	INSULATION ANVIL
77094	*12-180	(1)	CUT-OFF PUNCH
73229	15-004	(1)	CUT-OFF PUNCH DRIVER
72346	*13-006	(1)	WIRE ROLLING TOOL
72983	*14-003	(1)	INSULATION ROLLING TOOL
73516	3-026-72	(2)	SPRING
76186	1800	(1)	STOCK CHUTE
74570	GS-300	(2)	GUARD SPACER
74571	176-PCB	(1)	GUARD
		(1)	10-32 X 1 1/4" S.H.C.S.
		(1)	1/4-28 X 1/2" S.H.C.S.
		(2)	1/8 X 1" DOWEL
		(1)	5/16 X 3/4" SHOULDER SCREW
		(1)	1/4-28 X 3/4" S.S.S.
		(2)	1/4-20 X 1" S.H.C.S.
		(2)	1/4 X 1" DOWEL
		(1)	1/4-28 JAM NUT
		(1)	1/4-20 X 1/4" S.H.C.S.
		(5)	8-32 X 3/8" S.H.C.S.
		(1)	10-32 X 7/8" S.H.C.S.
		(2)	8-32 X 1" S.H.C.S.
		(12)	8-32 X 1/2" S.H.C.S.
		(2)	1/8 X 1/2" DOWEL
		(2)	1/4-20 X 1/4" S.S.S.
		(1)	5-40 X 5/16" S.S.S.

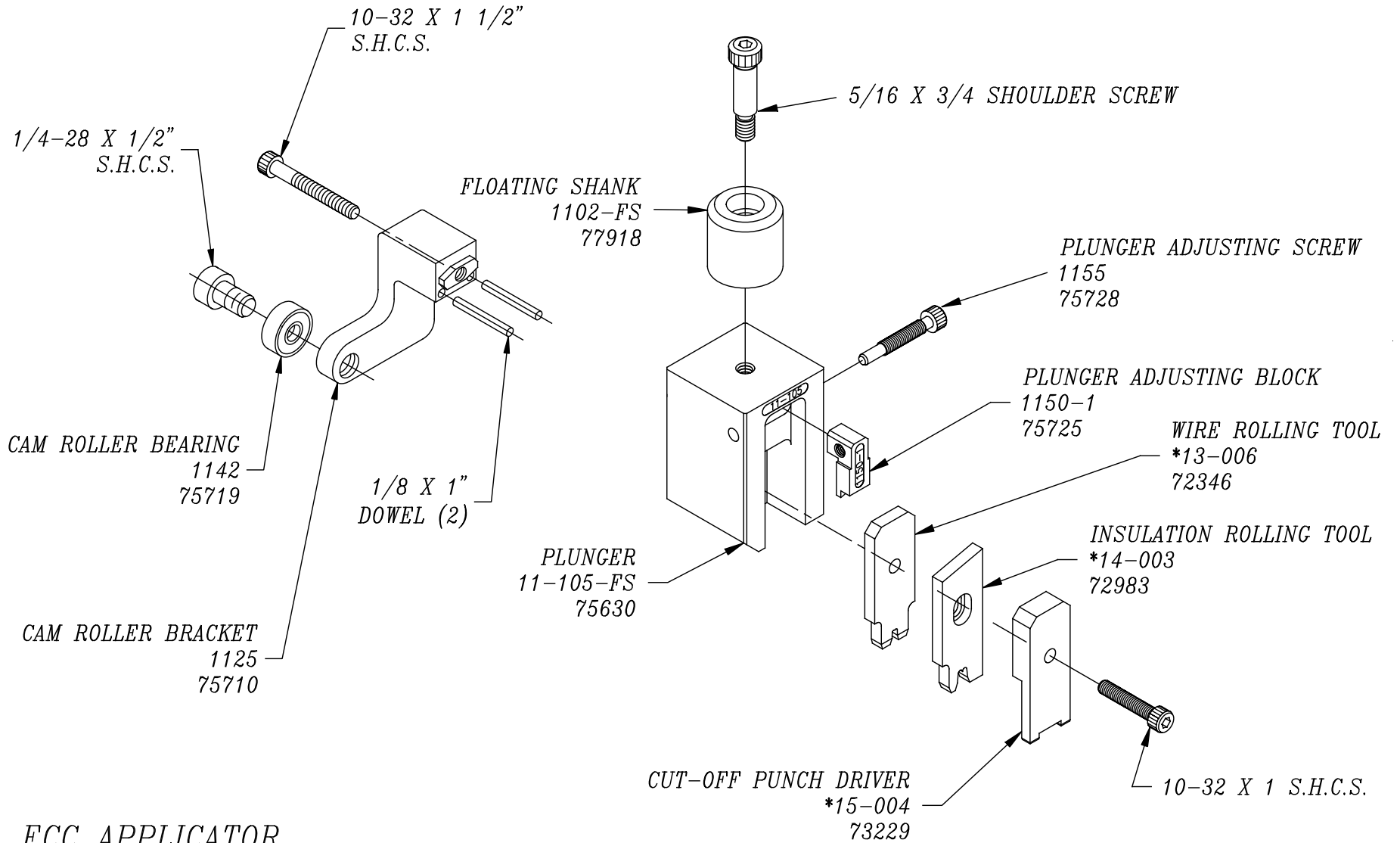
**NOTE: ITEMS MARKED WITH AN \*  
 ARE HIGH WEAR ITEMS**



ECC APPLICATOR  
 SIDE FEED  
 PCB-002

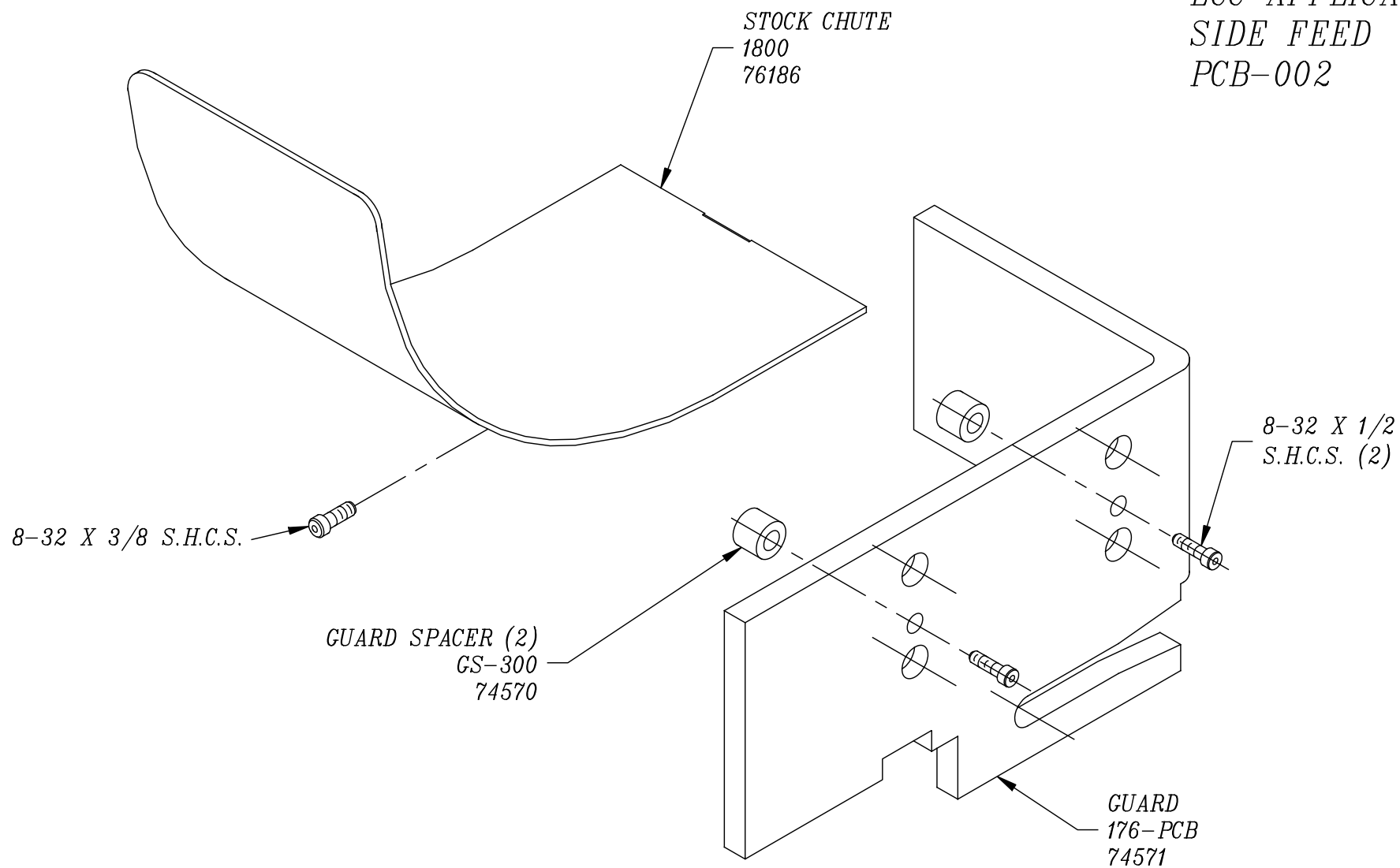
# ECC APPLICATOR SIDE FEED PCB-002





ECC APPLICATOR  
 SIDE FEED  
 PCB-002

*ECC APPLICATOR  
SIDE FEED  
PCB-002*



NEVER OPERATE APPLICATOR WITHOUT  
SAFETY GUARD IN POSITION.