



**REFERENCE LIST:
51608 / 51614 / 51792
ECC APPLICATOR-REAR
BILL OF MATERIAL NUMBER
79523**

**WARNING !
NEVER OPERATE
THIS OR ANY
APPLICATOR
WITHOUT SAFETY
GUARD IN POSITION.**

PART CODE	PART NUMBER	QUANTITY	DESCRIPTION
78167	*8-259	(1)	REAR CUT-OFF DIE
78166	*8-258	(1)	FRONT CUT-OFF DIE
78182	*9-276	(1)	ANVIL
78209	*13-249	(1)	ROLLING TOOL
72526	*12-228-1	(1)	CUT-OFF PUNCH
73935	202	(1)	BASE PLATE
73903	101-35	(1)	TOP CASTING
72529	11-206-1	(1)	PLUNGER
77918	1102-FS	(1)	FLOATING SHANK
72528	250-364-1	(1)	FEED PLATE
74674	405	(1)	TAPER PIN
74676	407	(1)	SPRING
75719	1142	(1)	CAM ROLLER BEARING
75710	1125	(1)	CAM ROLLER BRACKET
72448	408-723	(1)	BRAKE SPACER
74676	407	(1)	SPRING
74675	406	(1)	COTTER PIN
74673	404	(1)	CAM
74226	403-182	(1)	BRAKE
74496	402	(1)	SPRING RETAINER
74495	401	(1)	SHAFT
76969	169	(2)	GIBBS
74325	303	(1)	FEED FINGER
77269	304-375	(1)	FEED FINGER SPACER
72530	17-125	(1)	ROLLING TOOL SPACER
74393	305	(1)	FEED FINGER ARM
76788	307-5	(1)	SPRING
76858	301-3	(1)	SHOULDER SCREW
74396	306	(1)	STOPARM
74400	308	(1)	SHAFT
74402	310	(2)	SPRING
74403	311	(1)	ROLL PIN
74404	312	(1)	TAPER PIN
75865	314L-2	(1)	CAM
72527	1600-332	(1)	STRIPPER/WIRE STOP
72499	500-364	(1)	RIGHT GUILD RAIL

**NOTE: ITEMS MARKED WITH AN *
ARE HIGH WEAR ITEMS**



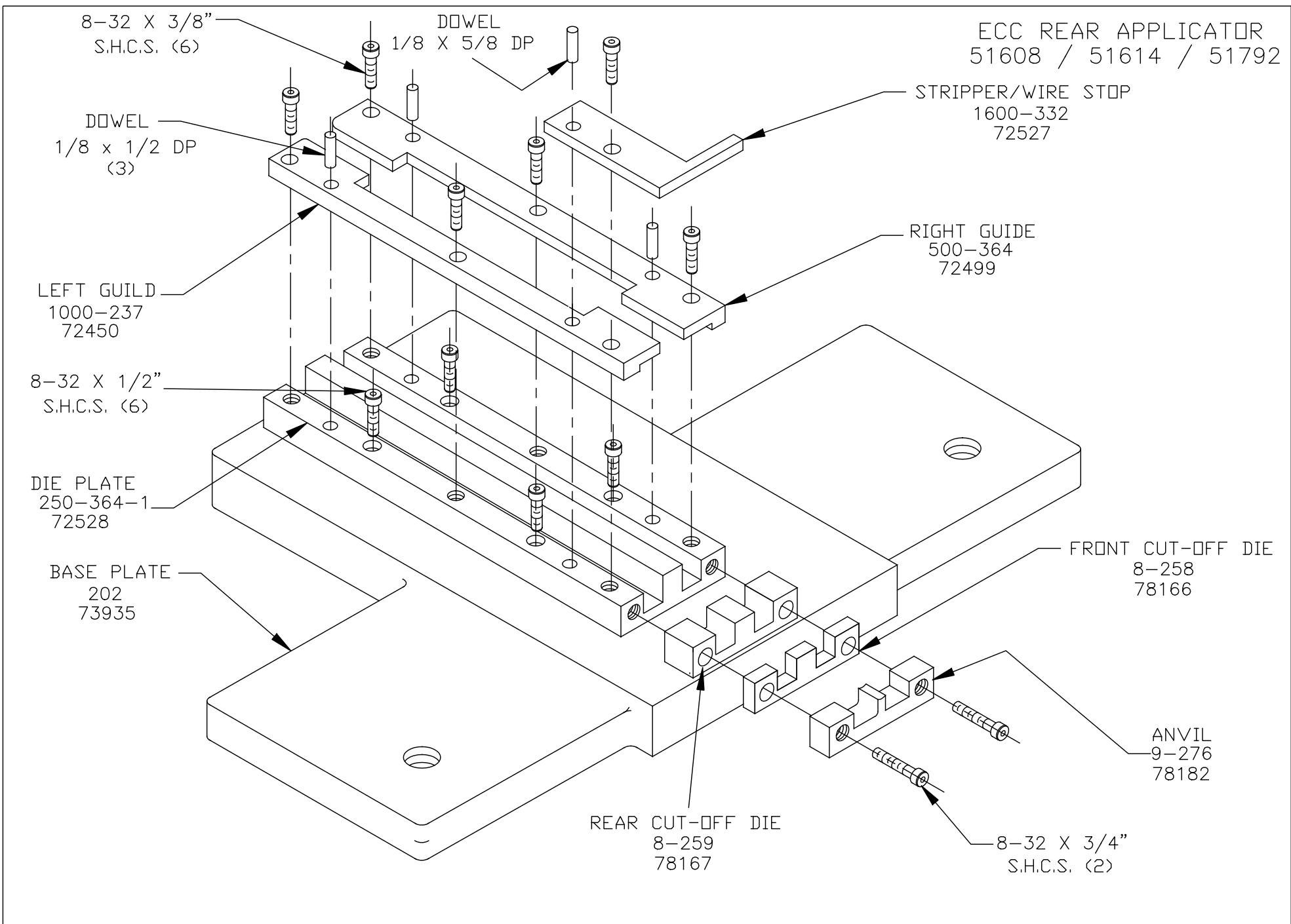
REFERENCE LIST:
 51608 / 51614 / 51792
 ECC APPLICATOR-REAR
 BILL OF MATERIAL NUMBER
 79523

WARNING !
 NEVER OPERATE
 THIS OR ANY
 APPLICATOR
 WITHOUT SAFETY
 GUARD IN POSITION.

PART CODE	PART NUMBER	QUANTITY	DESCRIPTION
72450	1000-237	(1)	LEFT GUILD RAIL
72446	177-10	(1)	GUARD
		(1)	13/16" DIA DOWEL
		(1)	10-32 X 5/8" S.H.C.S.
		(1)	10-32 X 1 1/4" S.H.C.S.
		(1)	1/4-28 X 1/2" S.H.C.S.
		(2)	1/8 X 1 1/4" DOWEL
		(1)	1/4-28 JAM NUT
		(1)	1/4-28 X 5/8" S.S.S.
		(2)	1/4 X 1" DOWEL
		(2)	1/4-20 X 1/4" S.H.C.S.
		(2)	1/4-20 X 1/4" S.S.S.
		(11)	8-32 X 3/8" S.H.C.S.
		(5)	8-32 X 1/2" S.H.C.S.
		(2)	8-32 X 3/4" S.H.C.S.
		(2)	1/8 X 1/2" DOWEL
		(2)	10-32 X 3/4" S.H.C.S.
		(1)	5/16 X 3/4 SHOULDER SCREW
		(4)	1/8 X 1/2 DOWEL
		(1)	1/8 X 5/8 DOWEL

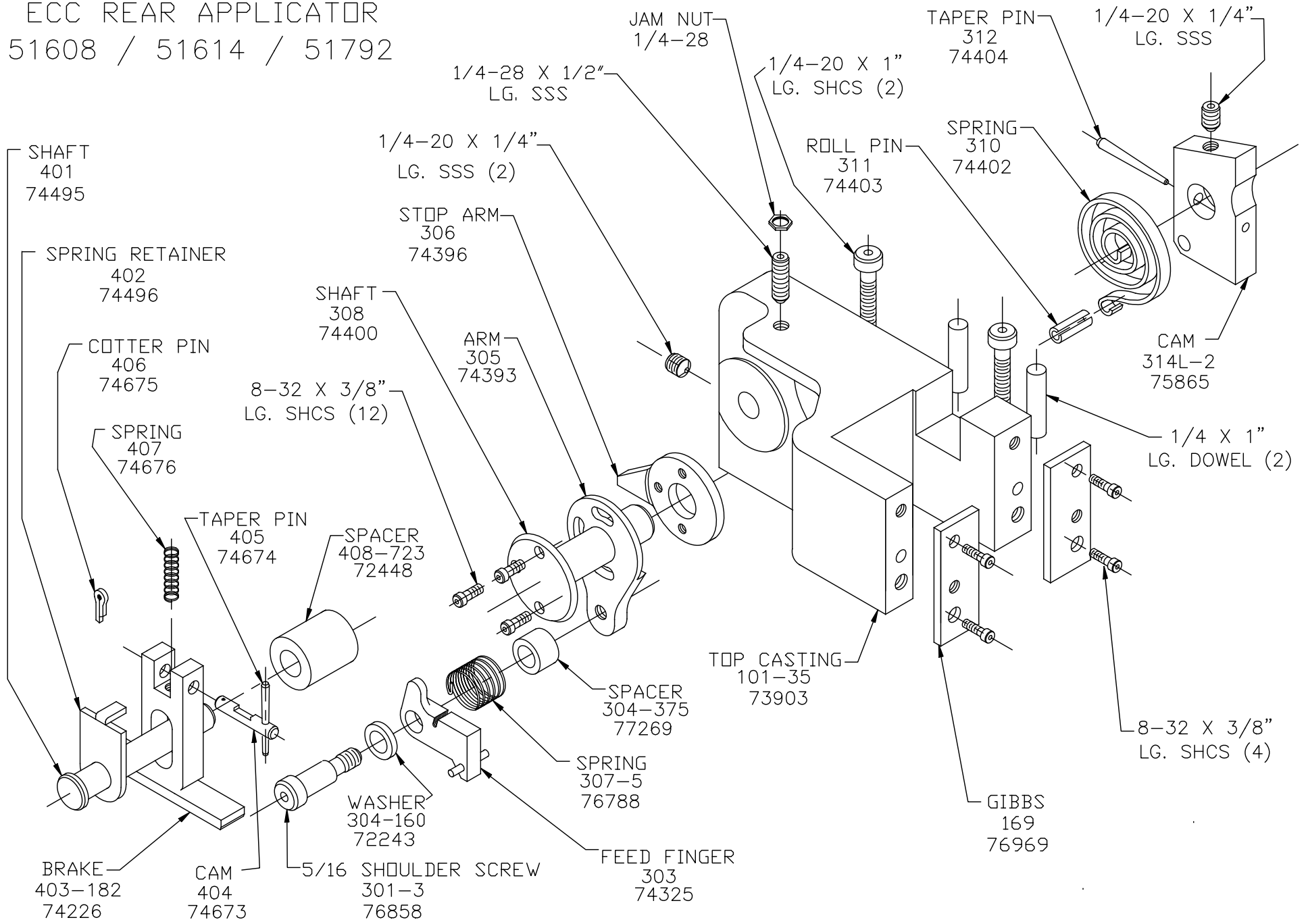
**NOTE: ITEMS MARKED WITH AN *
 ARE HIGH WEAR ITEMS**

ECC REAR APPLICATOR
51608 / 51614 / 51792

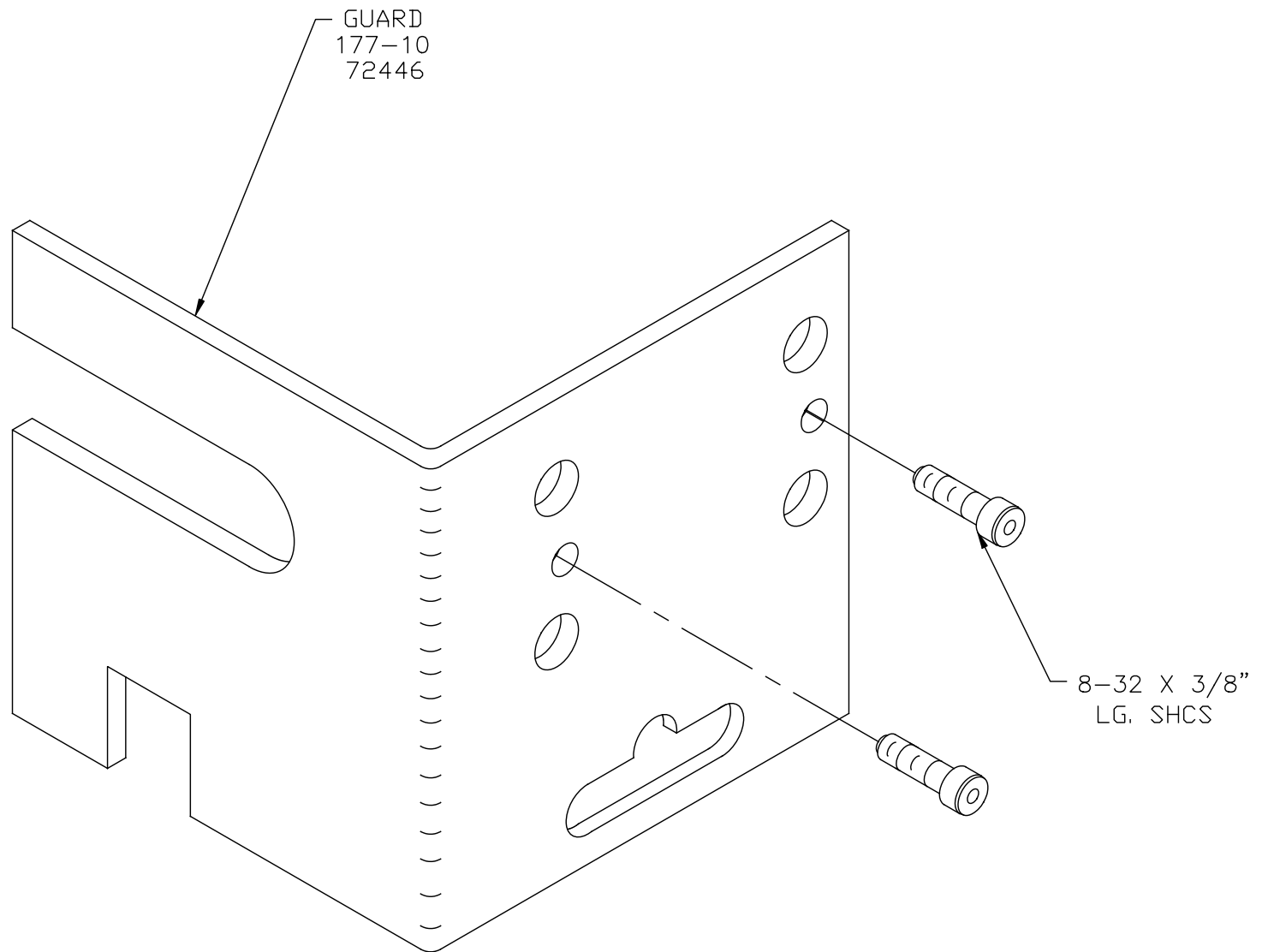


ECC REAR APPLICATOR

51608 / 51614 / 51792

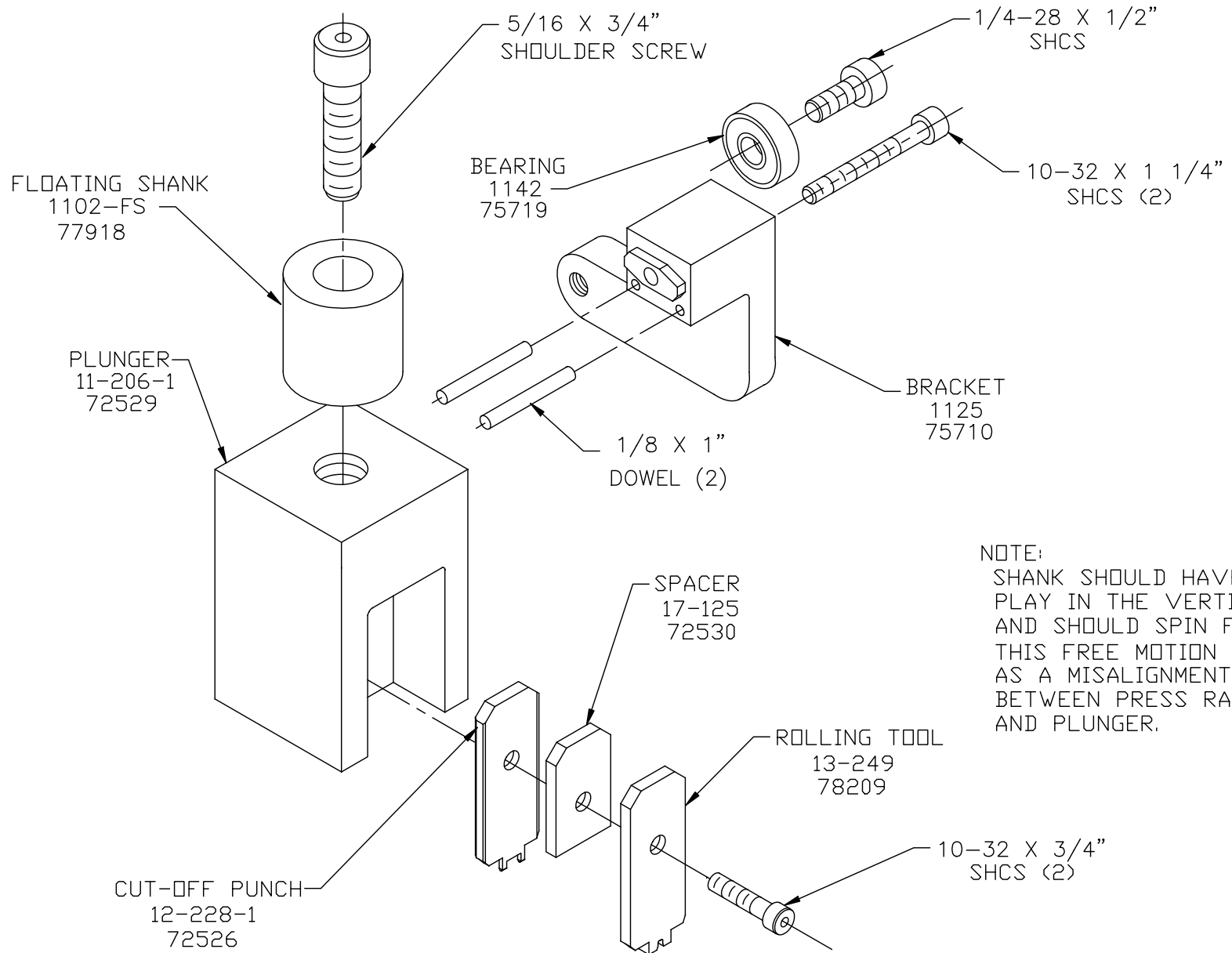


ECC REAR APPLICATOR
51608 / 51614 / 51792



NEVER OPERATE APPLICATOR WITHOUT
SAFETY GUARD IN POSITION.

ECC REAR APPLICATOR
51608 / 51614 / 51792



NOTE:
SHANK SHOULD HAVE FREE
PLAY IN THE VERTICAL AXIS
AND SHOULD SPIN FREELY.
THIS FREE MOTION SERVES
AS A MISALIGNMENT COUPLING
BETWEEN PRESS RAM
AND PLUNGER.