



**REFERENCE LIST:  
R-90  
ECC APPLICATOR  
SIDE FEED  
BILL OF MATERIAL NUMBER  
79527**

**WARNING !  
NEVER OPERATE  
THIS OR ANY  
APPLICATOR  
WITHOUT SAFETY  
GUARD IN POSITION.**

PART CODE	PART NUMBER	QUANTITY	DESCRIPTION
75496	1101	(1)	PLUNGER
77918	1102-FS	(1)	FLOATING SHANK
75729	1156	(1)	CUT-OFF SCREW
75728	1155	(1)	ADJUST SCREW
75724	1150	(1)	INSULATION BLOCK
75710	1125	(1)	CAM ROLLER BRACKET
75719	1142	(1)	CAM ROLLER BEARING
74410	314L-2	(1)	CAM
74403	311	(1)	SPRING PIN
74404	312	(1)	CAM TAPER PIN
74402	310	(1)	CAM RETURN SPRING
73899	101	(1)	TOP CASTING
73934	201	(1)	BASE PLATE
76969	169	(2)	UNIVERSAL GIBS
74675	406	(1)	COTTER PIN
74676	407	(1)	BRAKE SPRING
77154	408-812	(1)	BRAKE BUSHING
74674	405	(1)	TAPER PIN
74673	404	(1)	BRAKE CAM
74498	403-1	(1)	BRAKE BODY
74496	402	(1)	SPRING RETAINER
74495	401	(1)	BRAKE SHAFT
74396	306	(1)	FEED FINGER STOP
74393	305	(1)	FEED FINGER ARM
74400	308	(1)	FEED SHAFT
76894	304-500	(1)	REAR SPACER
76860	307-8	(1)	SPRING
77115	7A-R100	(1)	FEED FINGER
76873	301-4	(1)	SHOULDER SCREW
73952	231	(2)	STRIPPER SPRING
75993	1611	(1)	WIRE STRIPPER / STOP
74279	254	(1)	DIE PLATE
75020	522	(1)	REAR GUIDE
75392	1000	(1)	FRONT GUIDE
73955	235	(1)	GUIDE SPACER BLOCK
71800	*12-R90	(1)	CUT-OFF PUNCH

**NOTE: ITEMS MARKED WITH AN \*  
ARE HIGH WEAR ITEMS**

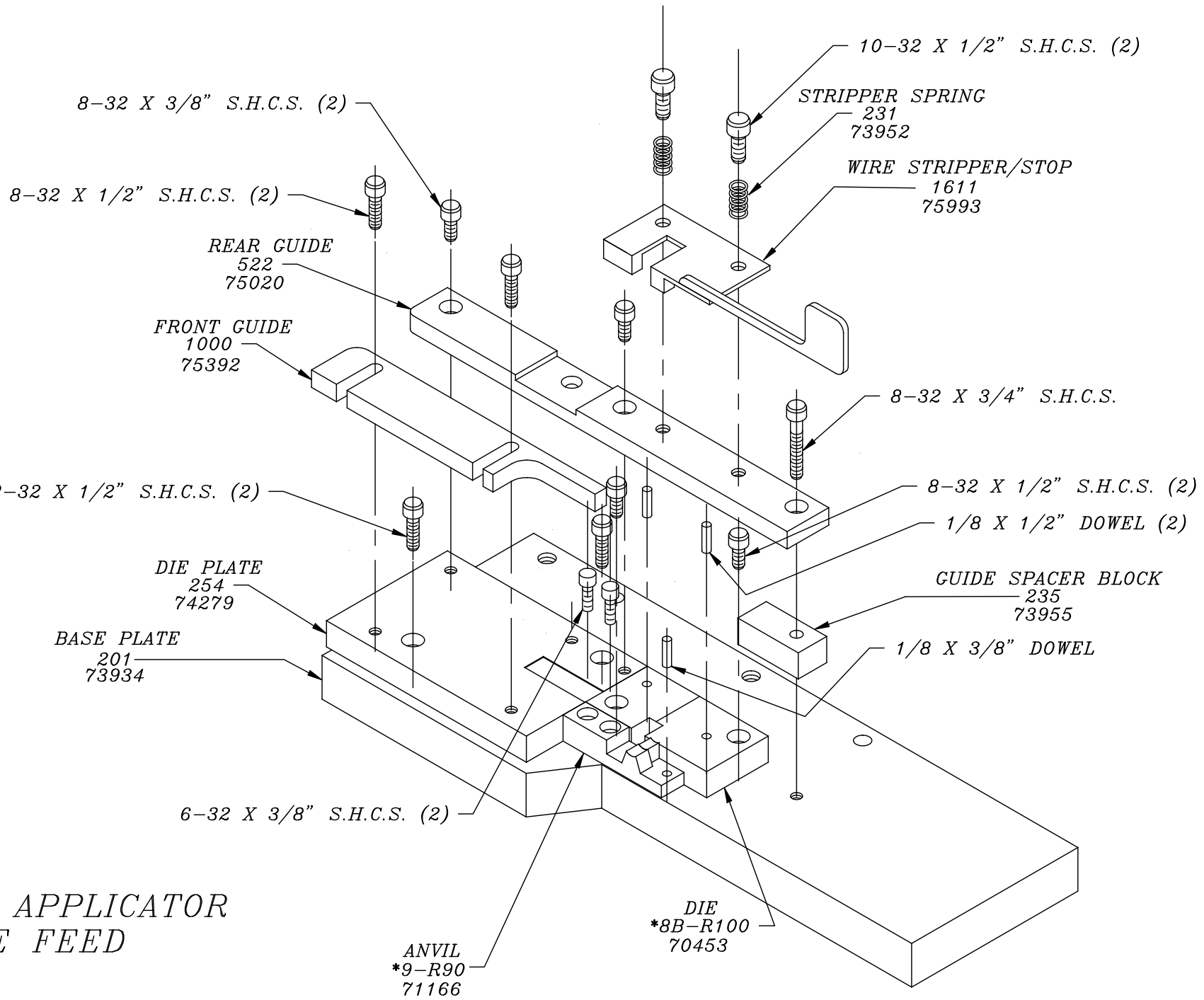


**REFERENCE LIST:  
R-90  
ECC APPLICATOR  
SIDE FEED  
BILL OF MATERIAL NUMBER  
79527**

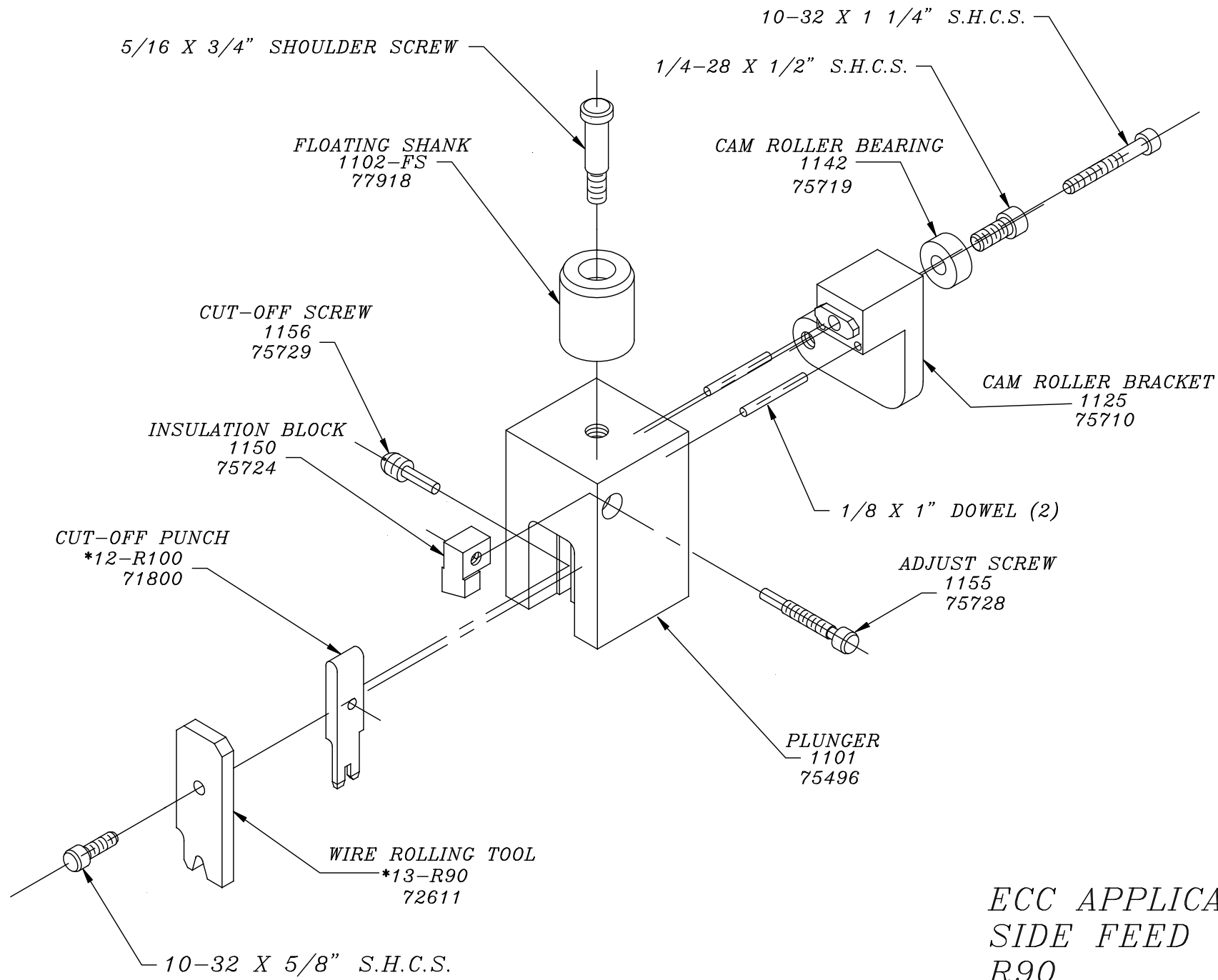
**WARNING !  
NEVER OPERATE  
THIS OR ANY  
APPLICATOR  
WITHOUT SAFETY  
GUARD IN POSITION.**

PART CODE	PART NUMBER	QUANTITY	DESCRIPTION
72611	*13-R90	(1)	WIRE ROLLING TOOL
		N/A	INSULATION ROLLING TOOL
70453	*8B-R100	(1)	DIE
71166	*9-R90	(1)	ANVIL
73922	176	(1)	GUARD
76186	1800	(1)	STOCK CHUTE
		(2)	6-32 X 3/8" S.H.C.S.
		(16)	8-32 X 3/8" S.H.C.S.
		(2)	8-32 X 1/2" S.H.C.S.
		(1)	8-32 X 3/4" S.H.C.S.
		(1)	10-32 X 3/8" S.H.C.S.
		(2)	10-32 X 1/2" S.H.C.S.
		(1)	10-32 X 1 1/2 S.H.C.S.
		(2)	1/4-20 X 1/4" S.S.S.
		(1)	1/4-28 X 1/2" S.H.C.S.
		(1)	1/4-28 X 3/4" S.S.S.
		(2)	1/4-20 X 1" S.H.C.S.
		(1)	1/4-28 JAM NUT
		(2)	1/4 X 3/8" SHOULDER SCREW
		(1)	5/16 X 3/4" SHOULDER SCREW
		(2)	1/8 X 3/8" DOWEL
		(2)	1/8 X 1" DOWEL
		(2)	1/4 X 1" DOWEL

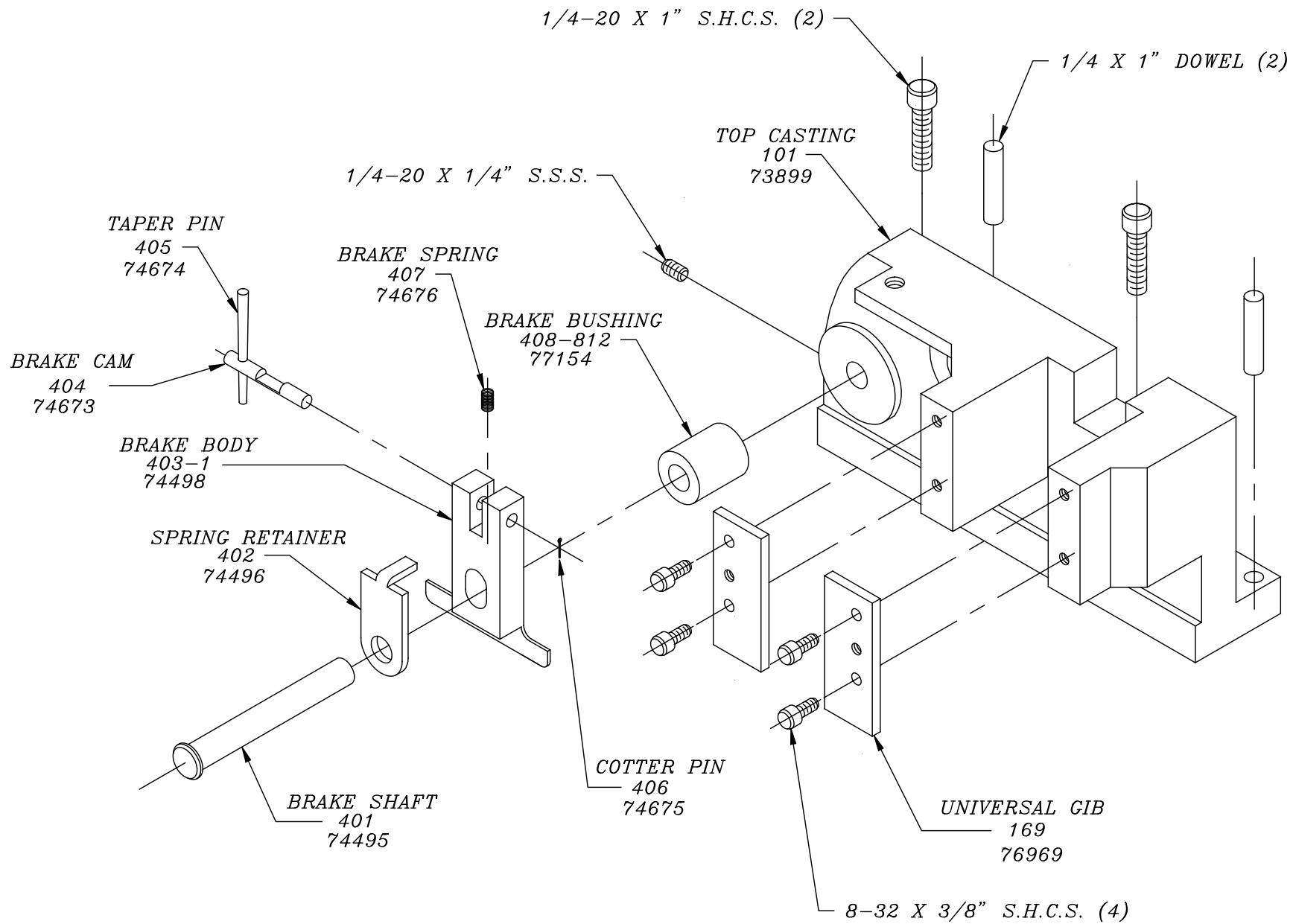
**NOTE: ITEMS MARKED WITH AN \*  
ARE HIGH WEAR ITEMS**



ECC APPLICATOR  
 SIDE FEED  
 R90

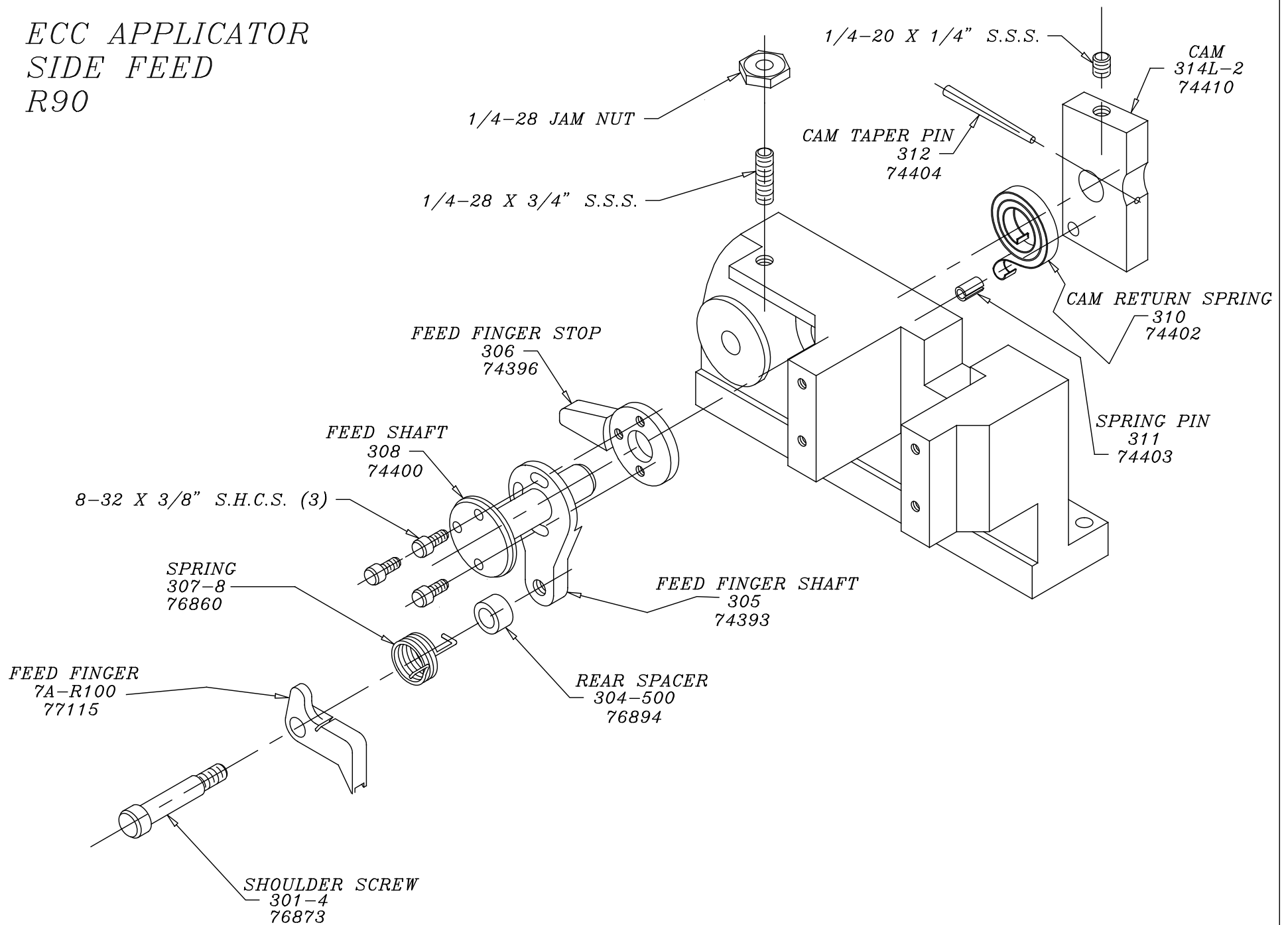


*ECC APPLICATOR  
SIDE FEED  
R90*



ECC APPLICATOR  
SIDE FEED  
R90

*ECC APPLICATOR  
SIDE FEED  
R90*



*ECC APPLICATOR  
SIDE FEED  
R90*

8-32 X 3/8" S.H.C.S.

STOCK CHUTE  
1800  
76186

GUARD  
176  
73922

8-32 X 3/8" S.H.C.S. (2)

