



REFERENCE LIST:
D366L
ECC SIDE APPLICATOR
BILL OF MATERIAL NUMBER
79529

WARNING !
NEVER OPERATE
THIS OR ANY
APPLICATOR
WITHOUT SAFETY
GUARD IN POSITION.

PART CODE	PART NUMBER	QUANTITY	DESCRIPTION
72300	11-104FS	(1)	PLUNGER
77918	1102-FS	(1)	FLOATING SHANK
75728	1155	(1)	ADJUST SCREW
75125	1150-1	(1)	INSULATION BLOCK
75710	1125	(1)	CAM ROLLER BRACKET
75719	1142	(1)	CAM ROLLER BEARING
73528	6-047-50	(2)	SPRING
74410	314L-2	(1)	CAM
74403	311	(1)	SPRING PIN
74404	312	(1)	CAM TAPER PIN
74402	310	(1)	CAM RETURN SPRING
73899	101	(1)	TOP CASTING
72301	205-4	(1)	BASE PLATE
72302	169 L&R-2	(2)	GIBS
74675	406	(1)	COTTER PIN
74676	407	(1)	BRAKE SPRING
72306	408-1105	(1)	BRAKE SPACER
74674	405	(1)	TAPER PIN
74673	404	(1)	BRAKE CAM
72305	403-25BW	(1)	BRAKE BODY
74496	402	(1)	SPRING RETAINER
74495	401	(1)	BRAKE SHAFT
74396	306	(1)	FEED FINGER STOP
74393	305	(1)	FEED FINGER ARM
74400	308	(1)	FEED SHAFT
76733	307-18	(1)	FEEDSPRING
72304	7A-D365	(1)	FEED FINGER
77272	304-1000	(1)	SPACER
76923	301-6	(1)	SHOULDER SCREW
73952	231	(2)	STRIPPER SPRING
72307	581	(1)	REAR GUIDE

NOTE: ITEMS MARKED WITH AN *
ARE HIGH WEAR ITEMS

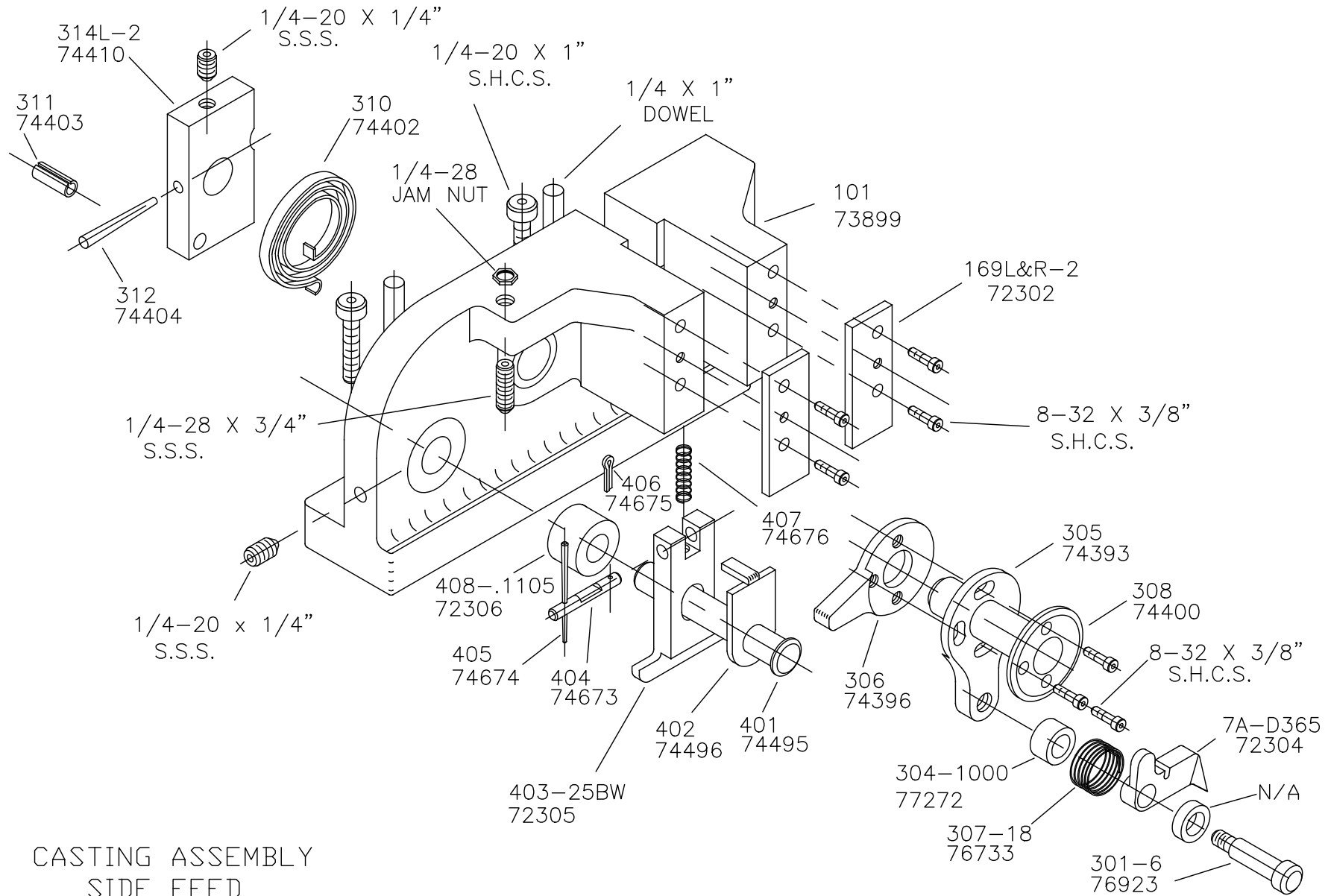


**REFERENCE LIST:
D366L
ECC SIDE APPLICATOR
BILL OF MATERIAL NUMBER
79529**

**WARNING !
NEVER OPERATE
THIS OR ANY
APPLICATOR
WITHOUT SAFETY
GUARD IN POSITION.**

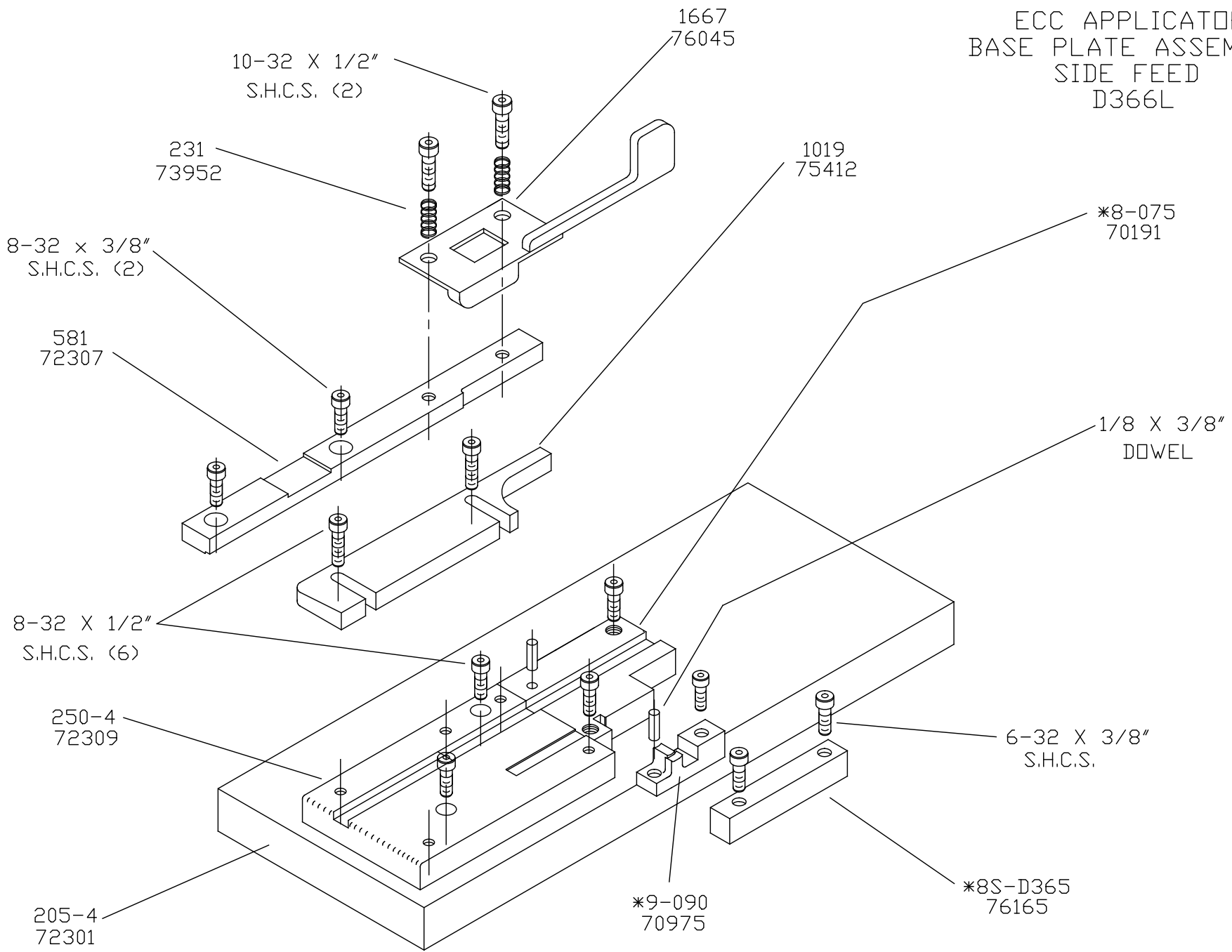
PART CODE	PART NUMBER	QUANTITY	DESCRIPTION
75412	1019	(1)	FRONT GUIDE
71623	12-057	(1)	REAR CUT-OFF PUNCH
72264	12F-D365	(1)	FRONT CUT-OFF PUNCH
73278	17-007	(1)	TOOLING SPACER
74112	16-071	(1)	CUT-OFF SPACER
72772	13-D366	(1)	WIRE ROLLING TOOL
73149	14-D366-1	(1)	INSULATION ROLLING TOOL
76045	1667	(1)	STRIPPER
70191	8-075	(1)	DIE
76165	8S-D365	(1)	STOCK RETAINER
72309	250-4	(1)	DIE PLATE
70975	9-090	(1)	ANVIL
76186	1800	(1)	STOCK CHUTE
72308	GS-312	(1)	GUARD SPACER
72303	176-53	(1)	GUARD
		(2)	6-32 X 3/8" S.H.C.S.
		(16)	8-32 X 3/8" S.H.C.S.
		(2)	8-32 X 1/2" S.H.C.S.
		(1)	8-32 X 3/4" S.H.C.S.
		(1)	10-32 X 3/8" S.H.C.S.
		(2)	10-32 X 1/2" S.H.C.S.
		(1)	10-32 X 1 1/2 S.H.C.S.
		(2)	1/4-20 X 1/4" S.S.S.
		(1)	1/4-28 X 1/2" S.H.C.S.
		(1)	1/4-28 X 3/4" S.S.S.
		(2)	1/4-20 X 1" S.H.C.S.
		(1)	1/4-28 JAM NUT
		(2)	1/4 X 3/8" SHOULDER SCREW
		(1)	5/16 X 3/4" SHOULDER SCREW
		(2)	1/8 X 3/8" DOWEL
		(2)	1/8 X 1" DOWEL
		(2)	1/4 X 1" DOWEL

**NOTE: ITEMS MARKED WITH AN *
ARE HIGH WEAR ITEMS**

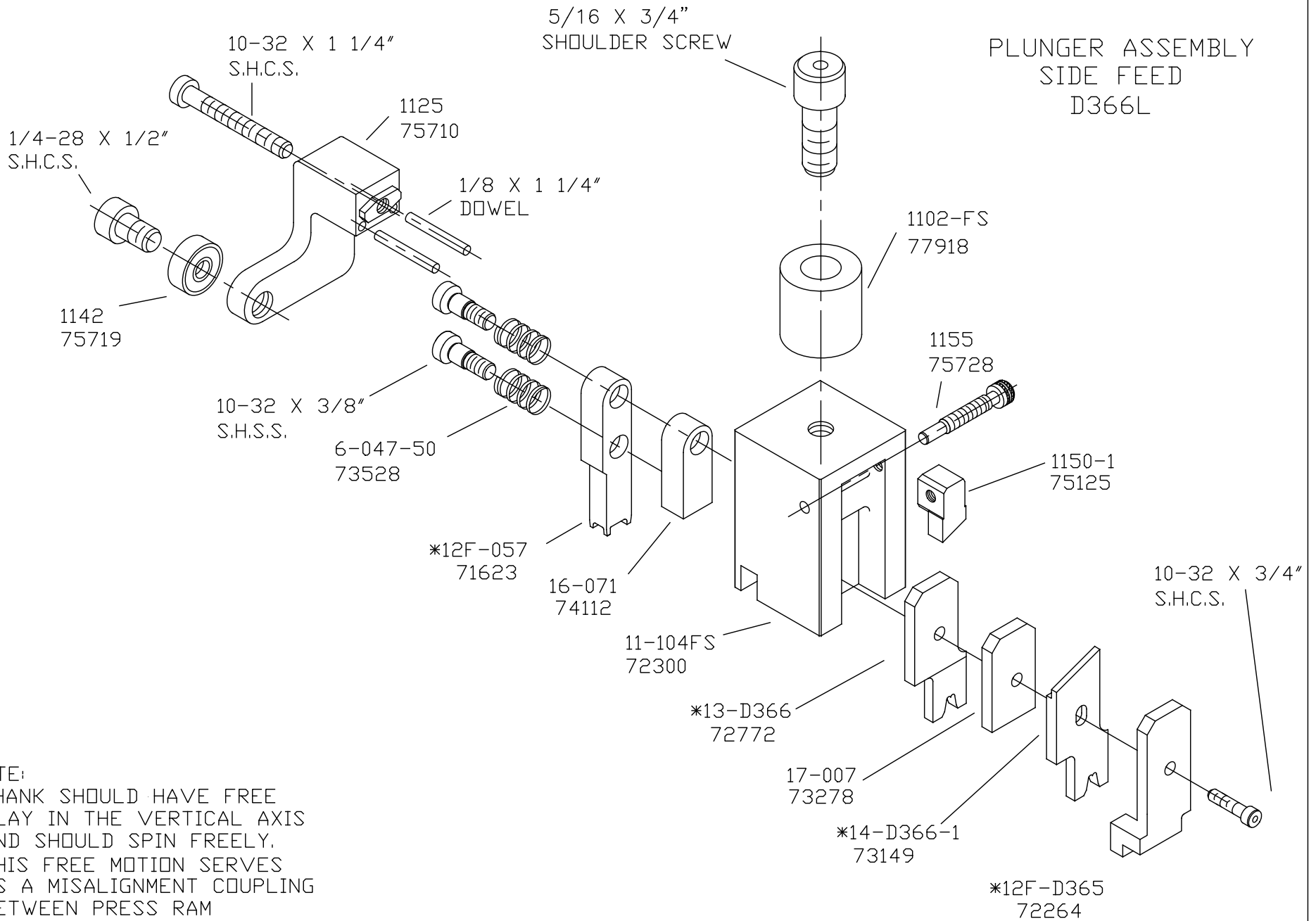


CASTING ASSEMBLY
 SIDE FEED
 D366L

ECC APPLICATOR
BASE PLATE ASSEMBLY
SIDE FEED
D366L



PLUNGER ASSEMBLY
SIDE FEED
D366L



NOTE:
SHANK SHOULD HAVE FREE
PLAY IN THE VERTICAL AXIS
AND SHOULD SPIN FREELY.
THIS FREE MOTION SERVES
AS A MISALIGNMENT COUPLING
BETWEEN PRESS RAM
AND PLUNGER.

CHUTE AND GUARD D366L

