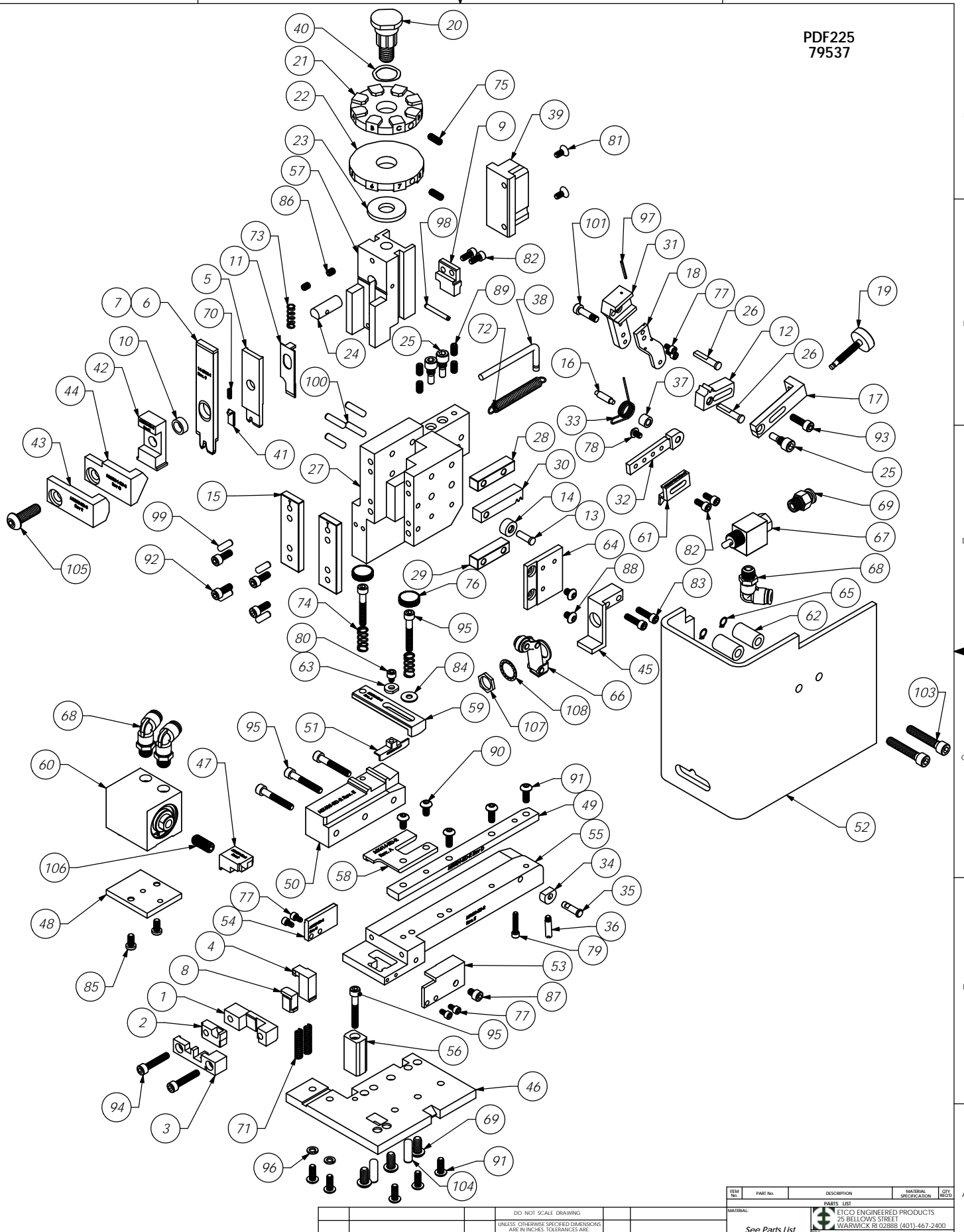


Parts List					Parts List				
Item No.	Part Code	Part No.	Description	QTY.	Item No.	Part Code	Part No.	Description	QTY.
1	72884	8-5002	Cut-off Die	1	65	74882	Irving 3100-25	Ø1/4" External Retaining Ring	2
2	72598	9-5002	Wire Anvil	1	66	72317	Clippard #12296	Cam Follower	1
3	72599	9A-5002	Insulation Anvil	1	67	72318	Clippard MJV-3	3-Way Valve	1
4	72885	12-5002	Cut-off Pad	1	68	72352	Pisco PL250-N1U	Ø1/4" x 1/8-NPT Elbow Fitting, White	3
5	72601	13-5002	*Wire Rolling Tool	1	69	73222	Pisco PC250-N1U	1/4" x 1/8" NPT Straight	1
6	72603	14-5002	*Insulation Rolling Tool	1	70	72315	LC-022A-4	Compression Spring	1
7	61838	14-5002-1	*Insulation Rolling Tool (Overlap)	1	71	72355	LC-032C-12-M	Compression Spring	2
8	72604	15-5002	Backing Dog	1	72	74611	LE-037CD-6	Extension Spring	1
9	72886	15-5003	Cut-Off Driver	1	73	72353	LC-038C-8-M	Ejector Punch Spring	1
10	72235	200S-3001	IRT Spacer	1	74	77322	LC-045E-10-M	Spring	2
11	72224	1600-5001	Ejector Punch	1	75	70739	McMaster-Carr #3126A53	Spring Plunger	2
12	74346	MX6	Gear Arm	1	76	73785	SPI 99-602-5	#10 Black Knurled Knob	2
13	74347	MX7	Cam Pin	1	77	63207	6-32_.25sh	#6-32 x 1/4" Socket Hd Cap Screw	6
14	74350	MX8	Cam Roller	1	78	63212	8-32_.25bh	#8-32 x 1/4" Button Hd Cap Screw	1
15	74352	MX11	Gib	2	79	69493	6-32_.75sh	#6-32 x 3/4" Socket Hd Cap Screw	1
16	74356	MX12	Feed Finger Pivot Pin	1	80	60265	8-32_.19sh	#8-32 x 3/16" Socket Hd Cap Screw	1
17	74360	MX13	Adjusting Bar	1	81	63508	8-32_.38fh	#8-32 x 3/8" Flat Hd Cap Screw	2
18	74364	MX16	Retainer	1	82	63161	8-32_.38sh	#8-32 x 3/8" Socket Hd Cap Screw	4
19	74376	MX25	Stroke Adjustment Screw	1	83	63162	8-32_.63sh	#8-32 x 5/8" Socket Hd Cap Screw	2
20	74407	MX33	Mounting Post	1	84	63210	8fw	#8 Flatwasher	1
21	72234	MX34-G	Wire Crimp Dial	1	85		10-24_.38lh	#10-24 x 3/8" Low Hd Cap Screw	2
22	74409	MX35	Insulation Dial	1	86	63054	10-32_.25ss	#10-32 x 1/4" Socket Hd Set Screw	3
23	74411	MX36	Dial Spacer	1	87	63473	10-32_.25sh	#10-32 x 1/4" Socket Hd Cap Screw	1
24	74412	MX44	Locating Dowel	1	88	78687	10-32_.25bh	#10-32 x 1/4" Button Hd Cap Screw	2
25	74419	MX50	Safety Pivot Pin	3	89	71626	10-32_.38ss	#10-32 x 3/8" Socket Hd Set Screw	4
26	74420	MX52	Pivot Pin	2	90	78993	10-32_.38bh	#10-32 x 3/8" Button Hd Cap Screw	2
27	74909	MX58-R	Frame	1	91	76501	10-32_.50bh	#10-32 x 1/2" Button Hd Cap Screw	8
28	74912	MX69-R	Upper Rack Pad	1	92	63056	10-32_.50sh	#10-32 x 1/2" Socket Hd Cap Screw	4
29	74913	MX70-R	Lower Rack Pad	1	93	70293	10-32_.63sh	#10-32 x 5/8" Socket Hd Cap Screw	1
30	74914	MX71-R	Cam Rack	1	94	63155	10-32_1.00sh	#10-32 x 1" Socket Hd Cap Screw	2
31	72285	MX72-R-1	Swing Arm	1	95	77396	10-32_1.25sh	#10-32 x 1 1/4" Socket Hd Cap Screw	6
32	72287	MX73-R-1	Feed Arm	1	96	78517	10lw	#10 Lockwasher	2
33	72596	MX80-1-R	Feed Finger Spring	1	97	62294	1.16_.75rp	1/16" x 3/4" Roll Pin	1
34	74425	MX84-S	Brake Cam	1	98	62040	1.8_1.00rp	1/8" x 1" Roll Pin	1
35	74426	MX85-S	Cam Pivot Pin	1	99	63158	3.16_.50dp	Ø 3/16" x 1/2" Dowel Pin	4
36	74430	MX88-S	Lever	1	100	63470	3.16_.75dp	3/16" x 3/4" Dowel Pin	4
37	72286	MX99-R-1	Spacer	1	101	63194	3.16_10-32_.50 shs	3/16" x 1/2" x 10-32 Shoulder Screw	1
38	74917	MX100-R	Spring Bracket	1	69	63632	1.4-20_.50bh	1/4-20 x 1/2" Button Hd Cap Screw	3
39	72204	MX102-R	Cam (K Press Down Stroke)	1	103		1.4-20_1.37sh	1/4-20 x 1-3/8" Socket Hd Cap Screw	2
40	72310	MX104	Wave Disc Spring	1	104		1.4_.75dp	1/4" x 3/4" Dowel Pin	2
41	76578	MX319-ITD-S	Knock off	1	105	63055	5.16-18_1.00bh	5/16-18 x 1" Button Hd Cap Screw	1
42	76583	MX324-ITD-S	Cut-off Pad Pusher	1	106	71086	5.16-24_.75ssf	5/16-24 x 3/4" Socket Hd Set Screw	1
43	70720	MX338-ITD-S	Arm Switch Cam (1 5/8" Stroke)	1	107		15.32_32 hex nut	Hex Nut	1
44	72233	MX338-1-ITD-S	Arm Switch Cam (1 1/8" Stroke)	1	108		1.2isw	1/2" Internal Star Washer	1
45	61993	MX358-2-ITD-S	Valve Mounting Plate	1					
46	72212	MX403-ITD-R	Base Plate	1					
47	72203	MX401-ITD-R	Insulation Pusher	1					
48	72202	MX402-ITD-R	CYLINDER MOUNTING BLOCK	1					
49	72213	MX404-ITD-R	Right Guide Rail	1					
50	72214	MX405-ITD-R	Left Guide Rail	1					
51	72215	MX406-ITD-R	Brake Shoe	1					
52	72216	MX407-ITD-R	Safety Guard	1					
53	72217	MX408-ITD-R	Anvil Guide (Right)	1					
54	72218	MX409-ITD-R	Anvil Guide Left	1					
55	72219	MX410-ITD-R	Die Plate	1					
56	72220	MX411-ITD-R	TERMINAL GUIDE BLOCK	1					
57	72221	MX412-ITD-R	Ram	1					
58	72223	MX414-ITD-R	Slide Cover	1					
59	72225	MX416-ITD-R	Lift Arm	1					
60	72227	MX417-ITD-R	Slide Cylinder	1					
61	72231	MX419-ITD-R	Feed Finger	1					
62	72232	MX420-ITD-R	Guard Spacer	2					
63	78984	MX424-ITD-R	#8 Hardened Washer	1					
64	70021	MX425-ITD-R	Valve Mounting Plate	1					

NOTE:  
 (1) Items marked in "bold text" are high wear items.  
 (2) Use OEM replacement tooling only.  
 (3) Recommended machine speed for automatic equipment is a maximum of 3500 parts per hour.



ITEM NO.	PART NO.	DESCRIPTION	MATERIAL SPECIFICATION	QTY. REQD.
See Parts List				
SURFACE FINISH: <input checked="" type="checkbox"/> ALL OVER UNLESS OTHERWISE SPECIFIED DIMENSIONS ARE IN INCHES. TOLERANCES ARE: FRACTIONS: DECIMALS: ANGLES: ±1/64 XX ±.01 XXX ±.005 XXXX ±.002				
THE INFORMATION CONTAINED WITHIN THIS DRAWING IS THE SOLE PROPERTY OF ETICO. NO PART OF THIS DRAWING OR THE INFORMATION HEREIN IS TO BE REPRODUCED OR TRANSMITTED IN ANY FORM OR BY ANY MEANS, ELECTRONIC OR MECHANICAL, INCLUDING PHOTOCOPYING, RECORDING, OR BY ANY INFORMATION STORAGE AND RETRIEVAL SYSTEM, WITHOUT THE WRITTEN PERMISSION OF ETICO ENGINEERED PRODUCTS.				
ECR# 2755 SCJ 10074		QTY. USED ON:	DATE: 1/20/2014	
REVISION:		APPLICATION:		DATE: 1/20/2014