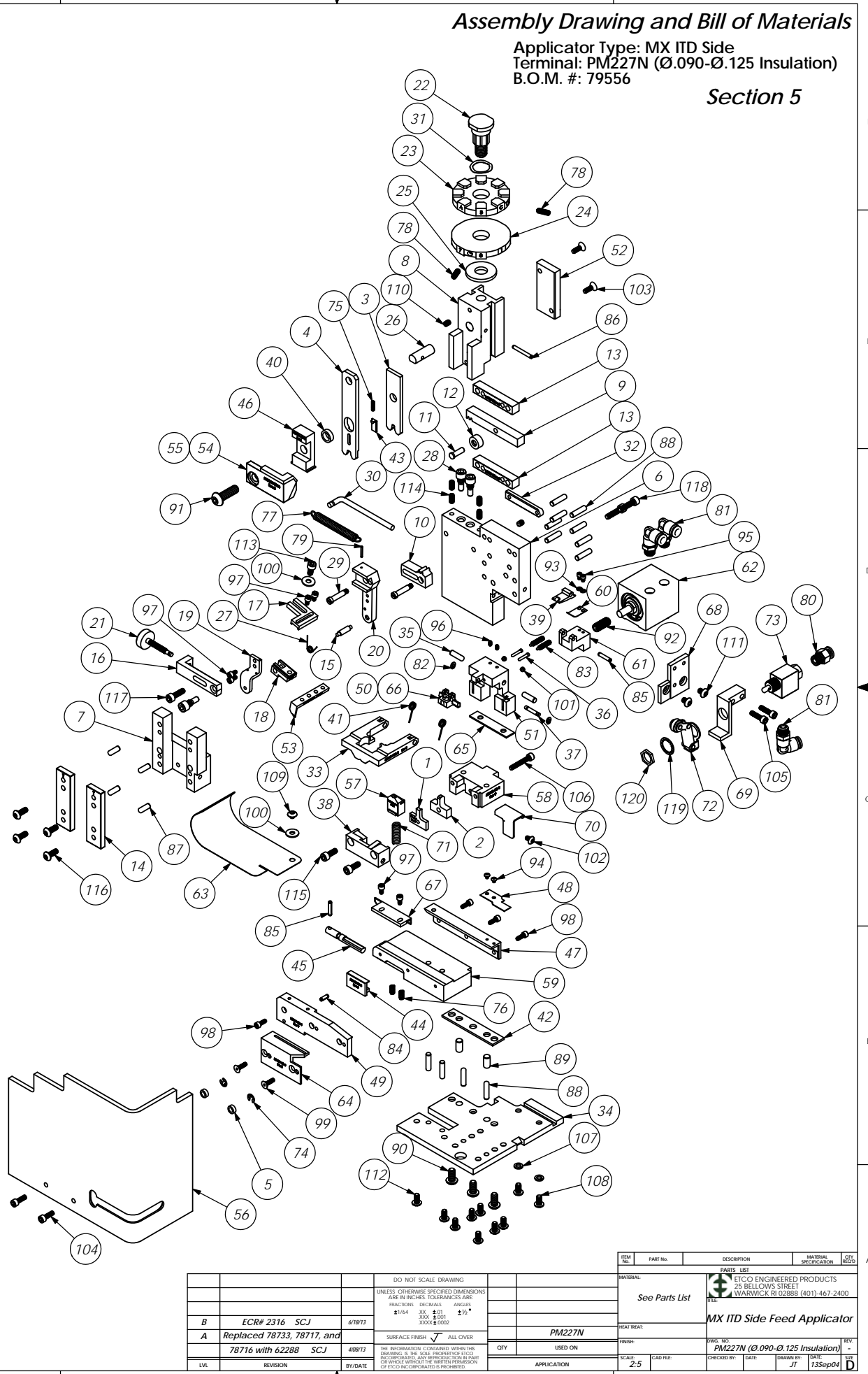


ITEM NO.	Part Code	PART NUMBER	DESCRIPTION	QTY.	ITEM NO.	Part Code	PART NUMBER	DESCRIPTION	QTY.
1	70753	9A-4007	Insulation Anvil	1	71	72350	5-047x1.000	Compression Spring	1
2	70752	9-4007	Wire Anvil	1	72	72317	Clippard #12296	Cam Follower	1
3	70748	13-4007	Wire Rolling Tool	1	73	72318	Clippard MJV-3	3-Way Valve	1
4	70749	14-4007	Insulation Rolling Tool	1	74	75083	Irving 3100-18	External Retaining Ring	2
5	73888	GS-125	Guard Spacer	2	75	72315	LC-022A-4	Compression Spring	1
6	71494	MX2A-S-1	Mounting Frame	1	76	78681	LC-029B-3-M	Compression Spring	2
7	71030	MX2B-S	Plunger Frame	1	77	74611	LE-037CD-6	Extension Spring	1
8	74343	MX3	Ram	1	78	70739	McMaster-Carr #3126A53	Spring Plunger	2
9	74438	MX5-S	Cam Rack	1	79	74447	McMaster-Carr #98296A109	Expansion Pin (1/16 x 1/2")	1
10	74346	MX6-1	Gear Arm	1	80	73222	Pisco PC250-N1U	1/4" x 1/8" NPT Straight	1
11	74347	MX7	Cam Pin	1	81	72352	Pisco PL250-N1U	Ø1/4" x 1/8-NPT Elbow Fitting, White	3
12	74350	MX8	Cam Roller	1	82	63200	Truarc #5555-12	Retaining Ring	2
13	74351	MX10-S	Rack Pad	2	83	63201	Vlier #PH-51-P	Spring Plunger	2
14	74352	MX11	Gib	2	84	63205	1.8_.38rp	Ø 1/8" x 3/8" Roll Pin	1
15	74356	MX12	Feed Finger Pivot Pin	1	85	63053	1.8_.63rp	1/8" x 5/8" Roll Pin	2
16	74360	MX13	Adjusting Bar	1	86	62040	1.8_1.00rp	1/8" x 1" Roll Pin	1
17	76868	MX14-1-S	Feed Finger Arm	1	87	63158	3.16_.50dp	Ø 3/16" x 1/2" Dowel Pin	4
18	76874	MX15-1-S	Feed Finger Guide	1	88	63470	3.16_.75dp	Ø 3/16" x 3/4" Dowel Pin	12
19	74364	MX16	Retainer	1	89	63827	1.4_.50dp	Ø 1/4" x 1/2" Dowel Pin	2
20	71495	MX18-S-1	Swing Arm	1	90	63632	1.4-20_.50bh	1/4-20 x 1/2" Button Hd Cap Screw	3
21	74376	MX25	Stroke Adjustment Screw	1	91	63055	5.16-18_1.00bh	5/16-18 x 1" Button Hd Cap Screw	1
22	74407	MX33	Mounting Post	1	92	71086	5.16-24_.75ssf	5/16-24 x 3/4" Socket Hd Set Screw	1
23	72103	MX34-F	Wire Crimp Dial	1	93	63202	4lw	#4 Lock Washer	2
24	74409	MX35	Insulation Dial	1	94	63203	4-40_.13bh	#4-40 x 1/8" Button Hd Cap Screw	2
25	74411	MX36	Dial Spacer	1	95	63204	4-40_.16sh	#4-40 x 5/32" Socket Hd Cap Screw	2
26	74412	MX44	Locating Dowel	1	96	63206	5-40_.19ssf	#5-40 x 3/16" Socket Set Screw	2
27	74415	MX45-S	Feed Finger Spring	1	97	63207	6-32_.25sh	#6-32 x 1/4" Socket Hd Cap Screw	6
28	74419	MX50	Safety Pivot Pin	3	98	63209	6-32_.38sh	#6-32 x 3/8" Socket Hd Cap Screw	4
29	71493	MX52-S-1	Pivot Pin	2	99	63057	6-32_.50fh	#6-32 x 1/2" Flat Hd Cap Screw	2
30	74614	MX90-S	Spring Bracket	1	100	63210	8fw	#8 Flatwasher	2
31	72310	MX104	Wave Disc Spring	1	101	63211	8-32_.13ssf	#8-32 x 1/8" Socket Hd Set Screw	2
32	71678	MX105-S	Pivot Pin Plate	1	102	63212	8-32_.25bh	#8-32 x 1/4" Button Hd Cap Screw	1
33	72167	MX301-7-ITD-S	Latching Gate	1	103	63052	8-32_.50fh	#8-32 x 1/2" Flat Hd Cap Screw	2
34	72261	MX302-1-ITD-S	Base Plate	1	104	63164	8-32_.50sh	#8-32 x 1/2" Socket Hd Cap Screw	2
35	76563	MX304-ITD-S	Hinge Pin	2	105	63162	8-32_.63sh	#8-32 x 5/8" Socket Hd Cap Screw	2
36	76564	MX305-ITD-S	Pin	2	106	63213	8-32_1.00sh	#8-32 x 1" Socket Hd Cap Screw	1
37	76567	MX308-ITD-S	Latch Pivot Pin	1	107	78517	10lw	#10 Lockwasher	2
38	78936	MX309-4-ITD-S	Cut-off Keeper	1	108	63531	10-24_.38bh	#10-24 x 3/8" Button Hd Cap Screw	2
39	76573	MX314-ITD-S	Catch	1	109	78327	10-32_.13bh	#10-32 x 1/8" Button Hd Cap Screw	1
40	76574	MX315-ITD-S	Insulation Tool Spacer	1	110	63054	10-32_.25ss	#10-32 x 1/4" Socket Hd Set Screw	2
41	76575	MX316-ITD-S	Latch Spring	2	111	78687	10-32_.25bh	#10-32 x 1/4" Button Hd Cap Screw	2
42	76576	MX317-ITD-S	Base Plate Spacer	1	112	78993	10-32_.38bh	#10-32 x 3/8" Button Hd Cap Screw	8
43	76578	MX319-ITD-S	Knock off	1	113	70110	10-32_.38sh	#10-32 x 3/8" Socket Hd Cap Screw	1
44	76579	MX320-ITD-S	Brake	1	114	10-32_.38ssf	#10-32 x 3/8" Socket Hd Set Screw	4	
45	76580	MX321-ITD-S	Brake Actuator	1	115	63056	10-32_.50sh	#10-32 x 1/2" Socket Hd Cap Screw	2
46	71070	MX324-1-ITD-S	Cut-off Pad Pusher	1	116	76501	10-32_.50bh	#10-32 x 1/2" Button Hd Cap Screw	4
47	72937	MX327-1-ITD-S	Left Feed Rail	1	117	70293	10-32_.63sh	#10-32 x 5/8" Socket Hd Cap Screw	1
48	76587	MX328-ITD-S	Hold Down Spring	1	118	63532	10-32_.75sh	#10-32 x 3/4" Socket Hd Cap Screw	2
49	76588	MX329-ITD-S	Right Feed Rail	1	119	1.2isw	1/2" Internal Star Washer	1	
50	76590	MX331-ITD-S	Latch (Automatic)	1	120	15.32_32 hex nut	Hex Nut	1	
51	70767	MX343-ITD-S	Support	1					
52	76608	MX335-ITD-S	Cam	1					
53	76661	MX337-ITD-S	Feed Finger	1					
54	70720	MX338-ITD-S	Arm Switch Cam (1 5/8" Stroke)	1					
55	72233	MX338-1-ITD-S	Arm Switch Cam (1 1/8" Stroke)	1					
56	70745	MX339-ITD-S	Guard	1					
57	78317	MX340-5-ITD-S	Cut-off Pad	1					
58	70765	MX341-ITD-S	Die Holder	1					
59	70766	MX342-ITD-S	Feed Plate	1					
60	72342	MX344-2-ITD-S	Leaf Spring	1					
61	72340	MX345-1-ITD-S	Insulation Pusher	1					
62	72099	MX348-ITD-S	.550 Strike Slide Cylinder	1					
63	72100	MX349-ITD-S	Stock Chute	1					
64	72101	MX350-ITD-S	Feed Finger Retainer	1					
65	72102	MX351-ITD-S	Support Spacer	1					
66	72172	MX352-ITD-S	Latch/Wire Stop	1					
67	72893	MX357-ITD-S	Bracket	1					
68	78733	MX358-1-ITD-S	Valve Mounting Plate	1					
69	61993	MX358-2-ITD-S	Valve Mounting Plate	1					
70	78835	MX360-ITD-S	Scrap Retainer	1					

NOTE: ITEMS MARKED IN BOLD TEXT ARE HIGH WEAR ITEMS

NOTE:
 (1) Items marked in bold text are high wear items.
 (2) Use OEM replacement tooling only.
 (3) Recommended machine speed for automatic equipment is a maximum of 3500 parts per hour.



ITEM NO.	PART NO.	DESCRIPTION	MATERIAL SPECIFICATION	QTY.	REVISION
B	ECR# 2316	SCJ			4/18/13
A	Replaced 78733, 78717, and 78716 with 62288	SCJ			4/8/13
LVL	REVISION	BY/DATE			

ITEM NO.	PART NO.	DESCRIPTION	MATERIAL SPECIFICATION	QTY.	REVISION
1	78733	Valve Mounting Plate		1	
2	61993	Valve Mounting Plate		1	
3	78835	Scrap Retainer		1	

ITEM NO.	PART NO.	DESCRIPTION	MATERIAL SPECIFICATION	QTY.	REVISION
1	78733	Valve Mounting Plate		1	
2	61993	Valve Mounting Plate		1	
3	78835	Scrap Retainer		1	