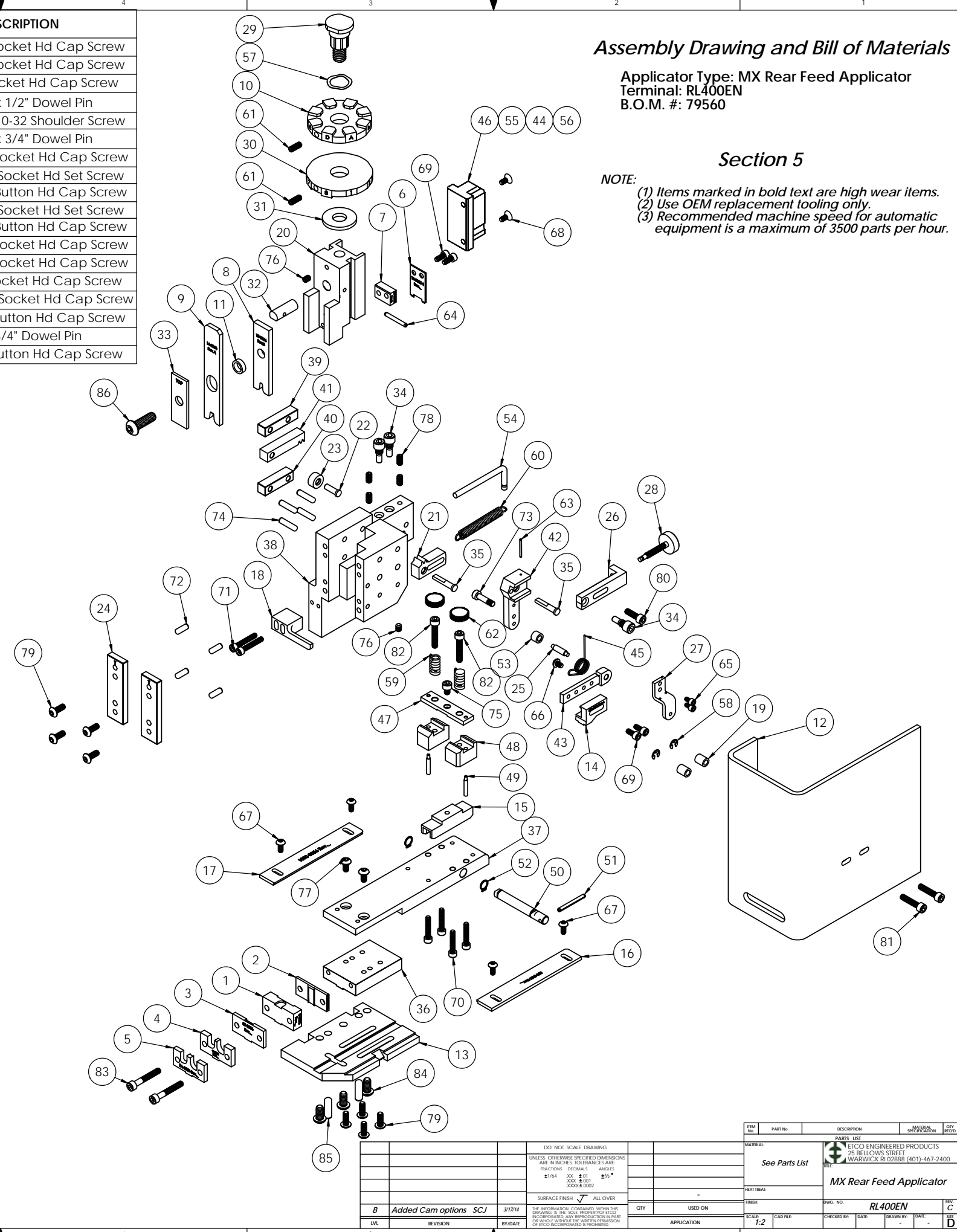


ITEM NO.	QTY.	Part_Code	PART NUMBER	DESCRIPTION
1	1	77340	8-3056	Front Cut-off Die
2	1	78336	8A-3056-1	Rear Cut-off Die
3	1	77344	8B-3056	Lifter Spacer
4	1	77334	9-3056	Wire Anvil
5	1	77335	9A-3056	Insulation Anvil
6	1	78335	12-3056-1	Cut-off Punch
7	1	77354	12A-3056	Cut-off Punch Spacer
8	1	77346	13-3056	Wire Rolling Tool
9	1	77347	14-3056	Insulation Rolling Tool
10	1	70713	34-3056	Wire Crimp Dial
11	1	76768	158S-3001	IRT Spacer
12	1	75285	199-3001	Guard
13	1	75507	200-3013	Baseplate
14	1	70711	303-3056	Feed Finger
15	1	70706	403-3056	Brake Shoe
16	1	70707	500-3056	Right Guide Rail
17	1	70708	1000-3056	Left Guide Rail
18	1	75287	1600-3011	Stripper
19	2	74491	GS-375	Guard Spacer
20	1	74343	MX3	Ram
21	1	74346	MX6	Gear Arm
22	1	74347	MX7	Cam Pin
23	1	74350	MX8	Cam Roller
24	2	74352	MX11	Gib
25	1	74356	MX12	Feed Finger Pivot Pin
26	1	74360	MX13	Adjusting Bar
27	1	74364	MX16	Retainer
28	1	74376	MX25	Stroke Adjustment Screw
29	1	74407	MX33	Mounting Post
30	1	74409	MX35	Insulation Dial
31	1	74411	MX36	Dial Spacer
32	1	74412	MX44	Locating Dowel
33	1	74418	MX49	Tool Retainer
34	3	74419	MX50	Safety Pivot Pin
35	2	74420	MX52	Pivot Pin
36	1	74908	MX54-R	Slide Support
37	1	74816	MX55-R	Feed Plate
38	1	74909	MX58-R	Frame
39	1	74912	MX69-R	Upper Rack Pad
40	1	74913	MX70-R	Lower Rack Pad
41	1	74914	MX71-R	Cam Rack
42	1	72285	MX72-R-1	Swing Arm
43	1	72287	MX73-R-1	Feed Arm
44	1	74915	MX75-R	Cam, 1 5/8" Downstroke
45	1	72596	MX80-1-R	Feed Finger Spring
46	1	74521	MX89-R	Cam, 1 1/8" Upstroke
47	1	74820	MX91-R	Lifter Plate
48	2	74821	MX92-R	Brake Support
49	2	74822	MX93-R	Lifter
50	1	74823	MX94-R	Brake Shaft
51	1	74825	MX96-R	Brake Handle
52	2	74827	MX97-R	Retaining Ring
53	1	72286	MX99-R-1	Spacer
54	1	74917	MX100-R	Spring Bracket
55	1	76682	MX101-R	Cam, 1 5/8" Upstroke
56	1	72204	MX102-R	Cam (K Press Down Stroke)
57	1	72310	MX104	Wave Disc Spring
58	2	75083	Irving 3100-18	External Retaining Ring
59	2	75342	LC-045E-6-M	Brake Spring
60	1	74611	LE-037CD-6	Extension Spring
61	2	70739	McMaster-Carr #3126A53	Spring Plunger
62	2	73785	SPI 99-602-5	#10 Black Knurled Knob
63	1	62294	1.16_.75rp	1/16" x 3/4" Roll Pin
64	1	62040	1.8_1.00rp	1/8" x 1" Roll Pin
65	2	63207	6-32_.25sh	#6-32 x 1/4" Socket Hd Cap Screw
66	1	63212	8-32_.25bh	#8-32 x 1/4" Button Hd Cap Screw
67	4	61472	8-32_.38bh	#8-32 x 3/8" Button Hd Cap Screw
68	2	63508	8-32_.38fh	#8-32 x 3/8" Flat Hd Cap Screw

ITEM NO.	QTY.	Part_Code	PART NUMBER	DESCRIPTION
69	4	63161	8-32_.38sh	#8-32 x 3/8" Socket Hd Cap Screw
70	4	63949	8-32_.88sh	#8-32 x 7/8" Socket Hd Cap Screw
71	2	63213	8-32_1.00sh	#8-32 x 1" Socket Hd Cap Screw
72	4	63158	3.16_.50dp	Ø3/16" x 1/2" Dowel Pin
73	1	63194	3.16_10-32_.50 shs	3/16" x 1/2" x 10-32 Shoulder Screw
74	4	63470	3.16_.75dp	Ø3/16" x 3/4" Dowel Pin
75	1	63473	10-32_.25sh	#10-32 x 1/4" Socket Hd Cap Screw
76	3	63054	10-32_.25ss	#10-32 x 1/4" Socket Hd Set Screw
77	2	78993	10-32_.38bh	#10-32 x 3/8" Button Hd Cap Screw
78	4	71626	10-32_.38ss	#10-32 x 3/8" Socket Hd Set Screw
79	8	76501	10-32_.50bh	#10-32 x 1/2" Button Hd Cap Screw
80	1	70293	10-32_.63sh	#10-32 x 5/8" Socket Hd Cap Screw
81	2	70925	10-32_.88sh	#10-32 x 7/8" Socket Hd Cap Screw
82	2	63155	10-32_1.00sh	#10-32 x 1" Socket Hd Cap Screw
83	2	77396	10-32_1.25sh	#10-32 x 1 1/4" Socket Hd Cap Screw
84	3	63632	1.4-20_.50bh	1/4-20 x 1/2" Button Hd Cap Screw
85	2		1.4_.75dp	1/4" x 3/4" Dowel Pin
86	1	63055	5.16-18_1.00bh	5/16-18 x 1" Button Hd Cap Screw

NOTE: ITEMS MARKED IN BOLD TEXT ARE HIGH WEAR ITEMS



Assembly Drawing and Bill of Materials

Applicator Type: MX Rear Feed Applicator
Terminal: RL400EN
B.O.M. #: 79560

Section 5

- NOTE:**
- (1) Items marked in bold text are high wear items.
 - (2) Use OEM replacement tooling only.
 - (3) Recommended machine speed for automatic equipment is a maximum of 3500 parts per hour.

REV	DESCRIPTION	DATE	BY	CHKD	APP	SCALE	APP	DATE	BY	CHKD	APP
B	Added Cam options SCJ	3/17/14				1:2					
LVL	REVISION		BY/DAR		APPLICATION						

REV	PART NO.	DESCRIPTION	MATERIAL SPECIFICATION	QTY	OFF REC'D
		DO NOT SCALE DRAWING			
		UNLESS OTHERWISE SPECIFIED DIMENSIONS ARE IN INCHES. TOLERANCES ARE:			
		FRACTIONS DECIMALS ANGLES			
		±.004 ±.01 ±.015 ±.03			
		±.001 ±.002 ±.005 ±.01			
		±.0005 ±.001 ±.002 ±.005			
		±.0001 ±.0002 ±.0005 ±.001			
		SURFACE FINISH ALL OVER			
		32 RMS UNLESS OTHERWISE SPECIFIED			
		THE INFORMATION CONTAINED HEREIN IS THE PROPERTY OF ETICO ENGINEERED PRODUCTS AND IS NOT TO BE REPRODUCED OR TRANSMITTED IN ANY FORM OR BY ANY MEANS, ELECTRONIC OR MECHANICAL, INCLUDING PHOTOCOPYING, RECORDING, OR BY ANY INFORMATION STORAGE AND RETRIEVAL SYSTEM, WITHOUT THE WRITTEN PERMISSION OF ETICO ENGINEERED PRODUCTS.			
		ETICO ENGINEERED PRODUCTS 25 BELLOWS STREET WARWICK, RI 02888 (401)-467-2400			
		MX Rear Feed Applicator			
		SCALE: 1:2			
		CAD REL:			
		CHECKED BY:			
		DATE:			
		DESIGN BY:			
		DATE:			
		REV: C			
		REV: D			