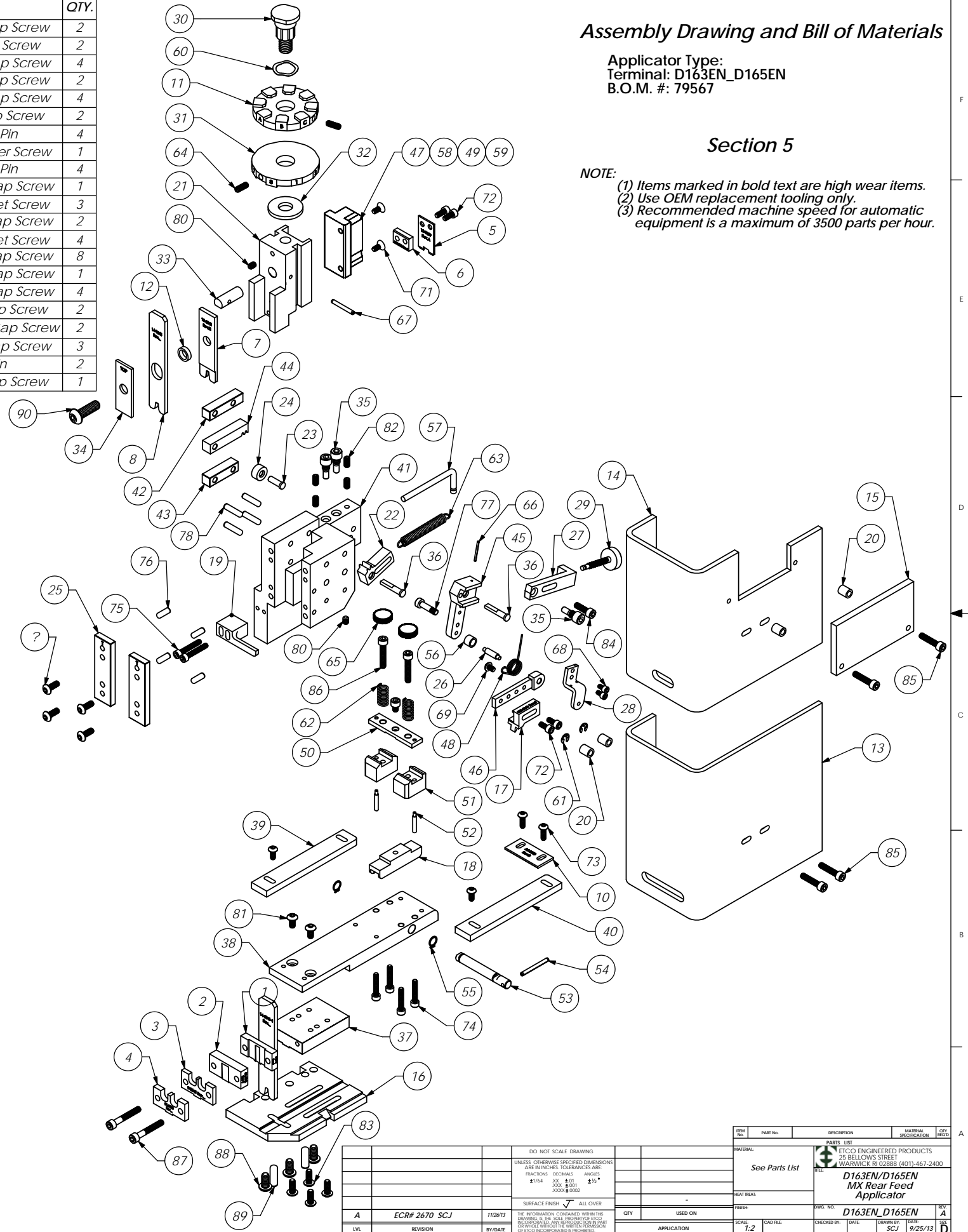


ITEM NO.	Part Code	PART NUMBER	DESCRIPTION	QTY.	ITEM NO.	Part Code	PART NUMBER	DESCRIPTION	QTY.
1	76643	8-3041	Rear Cut-off Die	1	70	61472	8-32_.38bh	#8-32 x 3/8" Button Hd Cap Screw	2
2	76642	8A-3041	Front Cut-off Die	1	71	63508	8-32_.38fh	#8-32 x 3/8" Flat Hd Cap Screw	2
3	76644	9-3041	Wire Anvil	1	72	63161	8-32_.38sh	#8-32 x 3/8" Socket Hd Cap Screw	4
4	77174	9A-3050	Insulation Anvil	1	73		8-32_.50bh	#8-32 x 1/2" Button Hd Cap Screw	2
5	76602	12-3039	Cut-off Punch	1	74	63949	8-32_.88sh	#8-32 x 7/8" Socket Hd Cap Screw	4
6	76641	12A-3041	Cut-off Punch Spacer	1	75	63213	8-32_1.00sh	#8-32 x 1" Socket Hd Cap Screw	2
7	76646	13-3041	Wire Roll Tool	1	76	63158	3.16_.50dp	Ø 3/16" x 1/2" Dowel Pin	4
8	76647	14-3041	Insulation Rolling Tool	1	77	63194	3.16_10-32_.50 shs	3/16" x 1/2" x 10-32 Shoulder Screw	1
9	64119	14-3041-1	Insulation Overlap Rolling Tool	1	78	63470	3.16_.75dp	Ø 3/16" x 3/4" Dowel Pin	4
10	77172	26-3050	Hold Down	1	79	63473	10-32_.25sh	#10-32 x 1/4" Socket Hd Cap Screw	1
11	72667	34-3050	Wire Crimp Dial	1	80	63054	10-32_.25ss	#10-32 x 1/4" Socket Hd Set Screw	3
12	70472	142S-3001	IRT Spacer	1	81	78993	10-32_.38bh	#10-32 x 3/8" Button Hd Cap Screw	2
13	75285	199-3001	Guard	1	82	71626	10-32_.38ss	#10-32 x 3/8" Socket Hd Set Screw	4
14	72978	199-3001-1A	Guard	1	83	76501	10-32_.50bh	#10-32 x 1/2" Button Hd Cap Screw	8
15	72979	199-3001-1B	Side Guard	1	84	70293	10-32_.63sh	#10-32 x 5/8" Socket Hd Cap Screw	1
16	76532	200-3036	Baseplate	1	85	70925	10-32_.88sh	#10-32 x 7/8" Socket Hd Cap Screw	4
17	76766	303-3041	Feed Finger	1	86	63155	10-32_1.00sh	#10-32 x 1" Socket Hd Cap Screw	2
18	77173	403-3050	Brake Shoe	1	87	77396	10-32_1.25sh	#10-32 x 1 1/4" Socket Hd Cap Screw	2
19	75287	1600-3011	Stripper	1	88	63632	1.4-20_.50bh	1/4-20 x 1/2" Button Hd Cap Screw	3
20	74491	GS-375	Guard Spacer	4	89		1.4_.75dp	1/4" x 3/4" Dowel Pin	2
21	74343	MX3	Ram	1	90	63055	5.16-18_1.00bh	5/16-18 x 1" Button Hd Cap Screw	1
22	74346	MX6	Gear Arm	1					
23	74347	MX7	Cam Pin	1					
24	74350	MX8	Cam Roller	1					
25	74352	MX11	Gib	2					
26	74356	MX12	Feed Finger Pivot Pin	1					
27	74360	MX13	Adjusting Bar	1					
28	74364	MX16	Retainer	1					
29	74376	MX25	Stroke Adjustment Screw	1					
30	74407	MX33	Mounting Post	1					
31	74409	MX35	Insulation Dial	1					
32	74411	MX36	Dial Spacer	1					
33	74412	MX44	Locating Dowel	1					
34	74418	MX49	Tool Retainer	1					
35	74419	MX50	Safety Pivot Pin	3					
36	74420	MX52	Pivot Pin	2					
37	74908	MX54-R	Slide Support	1					
38	74816	MX55-R	Feed Plate	1					
39	74817	MX56-R	Left Guide Rail	1					
40	74818	MX57-R	Right Guide Rail	1					
41	74909	MX58-R	Frame	1					
42	74912	MX69-R	Upper Rack Pad	1					
43	74913	MX70-R	Lower Rack Pad	1					
44	74914	MX71-R	Cam Rack	1					
45	72285	MX72-R-1	Swing Arm	1					
46	72287	MX73-R-1	Feed Arm	1					
47	74915	MX75-R	Cam, 1 5/8" Downstroke	1					
48	72596	MX80-1-R	Feed Finger Spring	1					
49	74521	MX89-R	Cam, 1 1/8" Upstroke	1					
50	74820	MX91-R	Lifter Plate	1					
51	74821	MX92-R	Brake Support	2					
52	74822	MX93-R	Lifter	2					
53	74823	MX94-R	Brake Shaft	1					
54	74825	MX96-R	Brake Handle	1					
55	74827	MX97-R	Retaining Ring	2					
56	74833	MX99-R	Feed Finger Spacer	1					
57	74917	MX100-R	Spring Bracket	1					
58	76682	MX101-R	Cam, 1 5/8" Upstroke	1					
59	72204	MX102-R	Cam (K Press Down Stroke)	1					
60	72310	MX104	Wave Disc Spring	1					
61	75083	Irving 3100-18	External Retaining Ring	2					
62	75342	LC-045E-6-M	Brake Spring	2					
63	74611	LE-037CD-6	Extension Spring	1					
64	70739	McMaster-Carr #3126A53	Spring Plunger	2					
65	73785	SPI 99-602-5	#10 Black Knurled Knob	2					
66	62294	1.16_.75rp	1/16" x 3/4" Roll Pin	1					
67	62040	1.8_1.00rp	1/8" x 1" Roll Pin	1					
68	63207	6-32_.25sh	#6-32 x 1/4" Socket Hd Cap Screw	2					
69	63212	8-32_.25bh	#8-32 x 1/4" Button Hd Cap Screw	1					

NOTE: ITEMS MARKED IN BOLD TEXT ARE HIGH WEAR ITEMS



Assembly Drawing and Bill of Materials

Applicator Type:
Terminal: D163EN_D165EN
B.O.M. #: 79567

Section 5

NOTE:
(1) Items marked in bold text are high wear items.
(2) Use OEM replacement tooling only.
(3) Recommended machine speed for automatic equipment is a maximum of 3500 parts per hour.