



**REFERENCE LIST:
R6E/R8E
ECC APPLICATOR
REAR FEED
BILL OF MATERIAL NUMBER
79585**

**WARNING !
NEVER OPERATE
THIS OR ANY
APPLICATOR
WITHOUT SAFETY
GUARD IN POSITION.**

PART CODE	PART NUMBER	QUANTITY	DESCRIPTION
77018	*8-212	(1)	DIE
77019	*8-213	(1)	DIE
77020	*9-229	(1)	WIRE ANVIL
77021	*9-230	(1)	INSULATION ANVIL
77027	*14-061	(1)	INSULATION ROLLING TOOL
77022	*13-202	(1)	WIRE ROLLING TOOL
71584	*12-011	(1)	CUT-OFF PUNCH
73903	101-35	(1)	TOP CASTING
77515	101-35A	(1)	TOP CASTING
76933	202-10	(1)	BASE PLATE
74676	407	(1)	BRAKE SPRING
74675	406	(1)	COTTER PIN
76969	169	(1)	UNIVERSAL GIB
76943	403-173	(1)	BRAKE BODY
76862	402-1	(1)	SPRING RETAINER
74138	303-75	(1)	FEED FINGER
76940	304-110	(1)	FEED FINGER SPACER
76942	304-390	(1)	FEED FINGER SPACER
71103	17-120	(1)	CUT-OFF SPACER
74393	305	(1)	FEED FINGER ARM
76859	307-6	(1)	SPRING
76873	301-4	(1)	5/16 SHOULDER SCREW
70564	500-329	(1)	RIGHT/REAR GUILD
74210	1000-204	(1)	LEFT/ FRONT GUILD
74396	306	(1)	STOPARM
74400	308	(1)	SHAFT
74402	310	(2)	SPRING
73706	311-1	(1)	ROLL PIN
74404	312	(1)	CAM TAPER PIN
76932	16B-R6E	(1)	BRIDGE (HOLD DOWN)
76931	11-191	(1)	PLUNGER
75724	1150	(1)	INSULATION ADJ. BLOCK
75728	1155	(1)	ADJ. BLOCK SCREW
76937	250-330	(1)	DIE PLATE
74422	314L-9A	(1)	CAM
75719	1142	(1)	CAM ROLLER BEARING

**NOTE: ITEMS MARKED WITH AN *
ARE HIGH WEAR ITEMS**



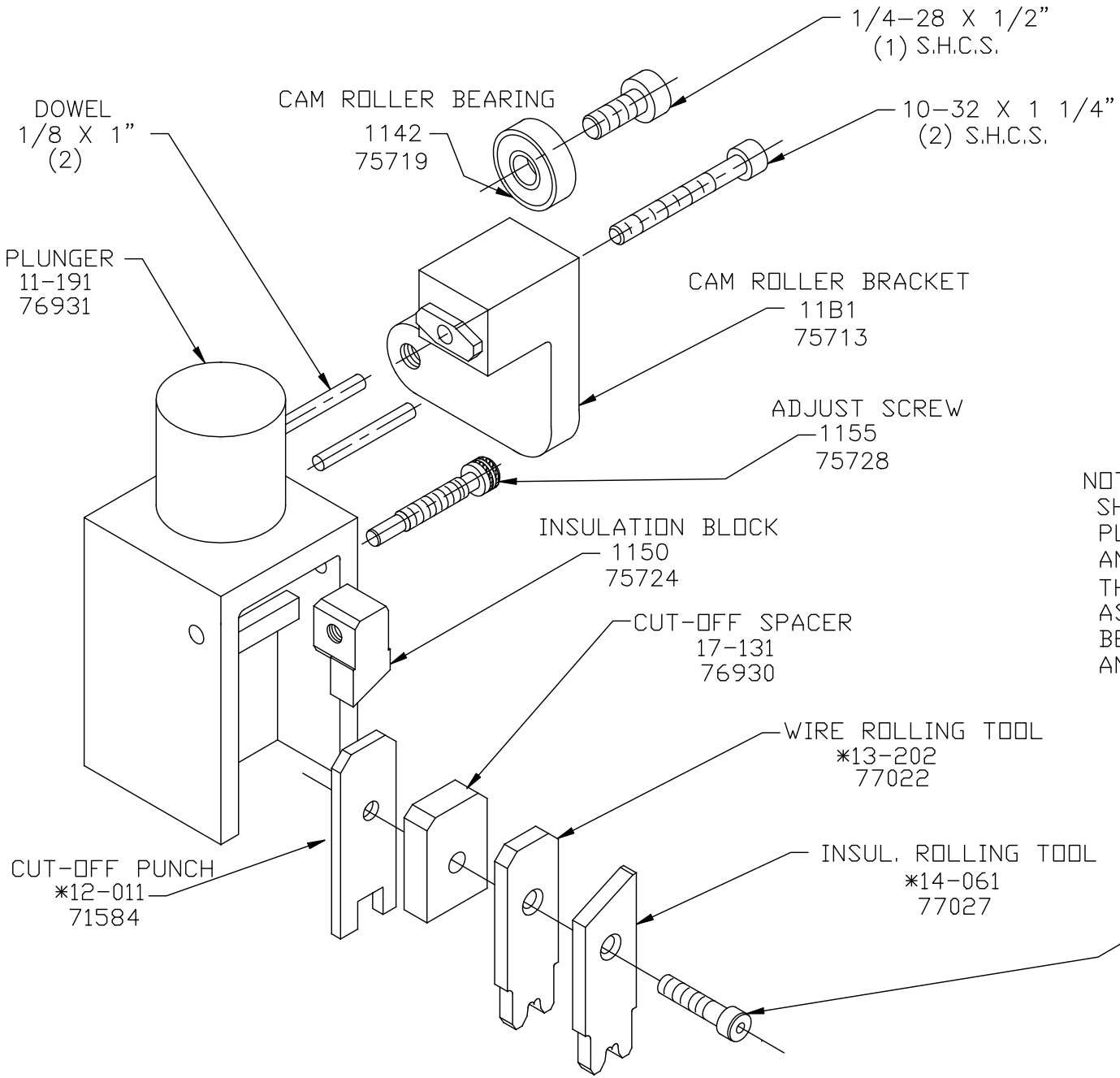
**REFERENCE LIST:
R6E/R8E
ECC APPLICATOR
REAR FEED
BILL OF MATERIAL NUMBER
79585**

**WARNING !
NEVER OPERATE
THIS OR ANY
APPLICATOR
WITHOUT SAFETY
GUARD IN POSITION.**

PART CODE	PART NUMBER	QUANTITY	DESCRIPTION
74122	408-400	(1)	BRAKE SPACER
74673	404	(1)	BRAKE CAM
75713	11B1	(1)	CAM ROLLER BRACKET
76945	GS-050	(2)	GUARD SPACER
76944	179-18	(1)	GUARD
74674	405	(1)	TAPER PIN
		(2)	5-40 X 1/4 S.H.C.S.
		(1)	5/16 X 3/4 S.H.S.S.
		(1)	1/4-28 X 1/2 S.H.C.S
		(1)	13/16" DIA DOWEL
		(1)	10-32 X 5/8" S.H.C.S.
		(1)	10-32 X 1 1/4" S.H.C.S.
		(2)	1/4-28 X 1/2" S.H.C.S.
		(2)	1/8 X 1" DOWEL
		(1)	1/4-28 JAM NUT
		(1)	1/4-28 X 5/8" S.S.S.
		(2)	1/4 X 1" DOWEL
		(2)	1/4-20 X 1/4" S.H.C.S.
		(2)	1/4-20 X 1/4" S.S.S.
		(13)	8-32 X 3/8" S.H.C.S.
		(6)	8-32 X 1/2" S.H.C.S.
		(2)	8-32 X 3/4" S.H.C.S.
		(2)	1/8 X 1/2" DOWEL
		(2)	10-32 X 1/2" S.H.C.S.

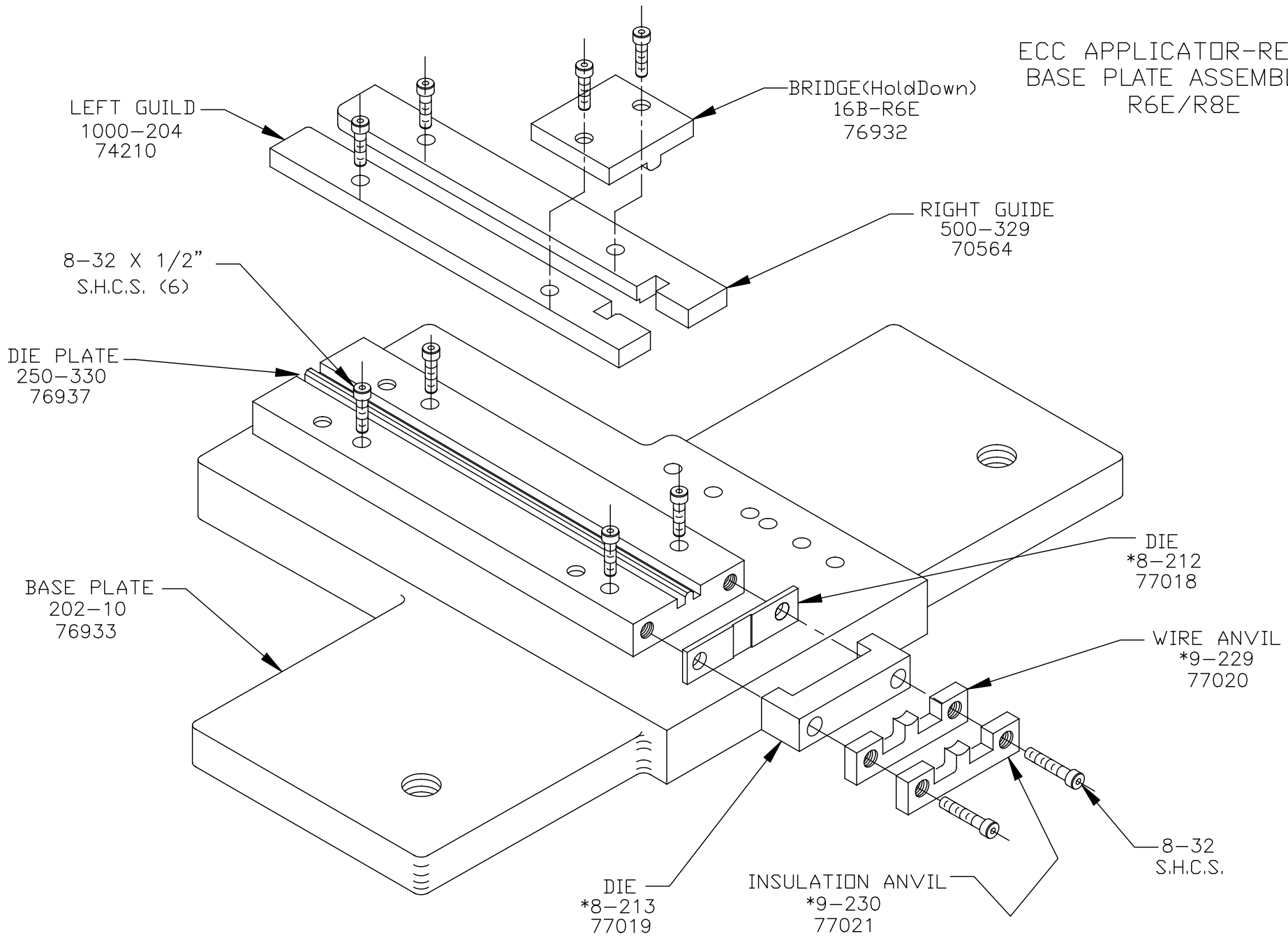
**NOTE: ITEMS MARKED WITH AN *
ARE HIGH WEAR ITEMS**

ECC APPLICATOR-REAR
PLUNGER ASSEMBLY
R6E/R8E

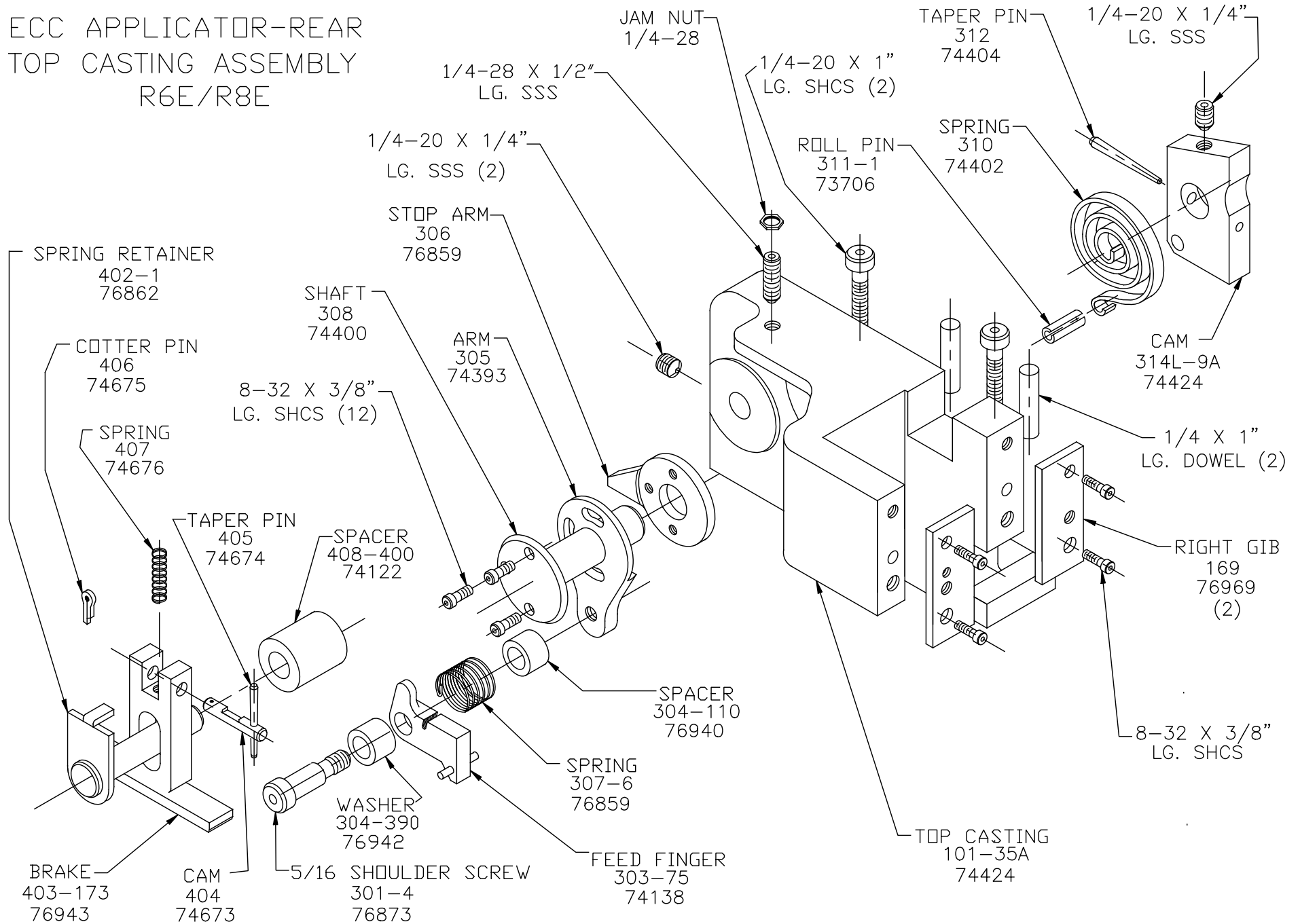


NOTE:
SHANK SHOULD HAVE FREE
PLAY IN THE VERTICAL AXIS
AND SHOULD SPIN FREELY.
THIS FREE MOTION SERVES
AS A MISALIGNMENT COUPLING
BETWEEN PRESS RAM
AND PLUNGER.

ECC APPLICATOR-REAR
BASE PLATE ASSEMBLY
R6E/R8E

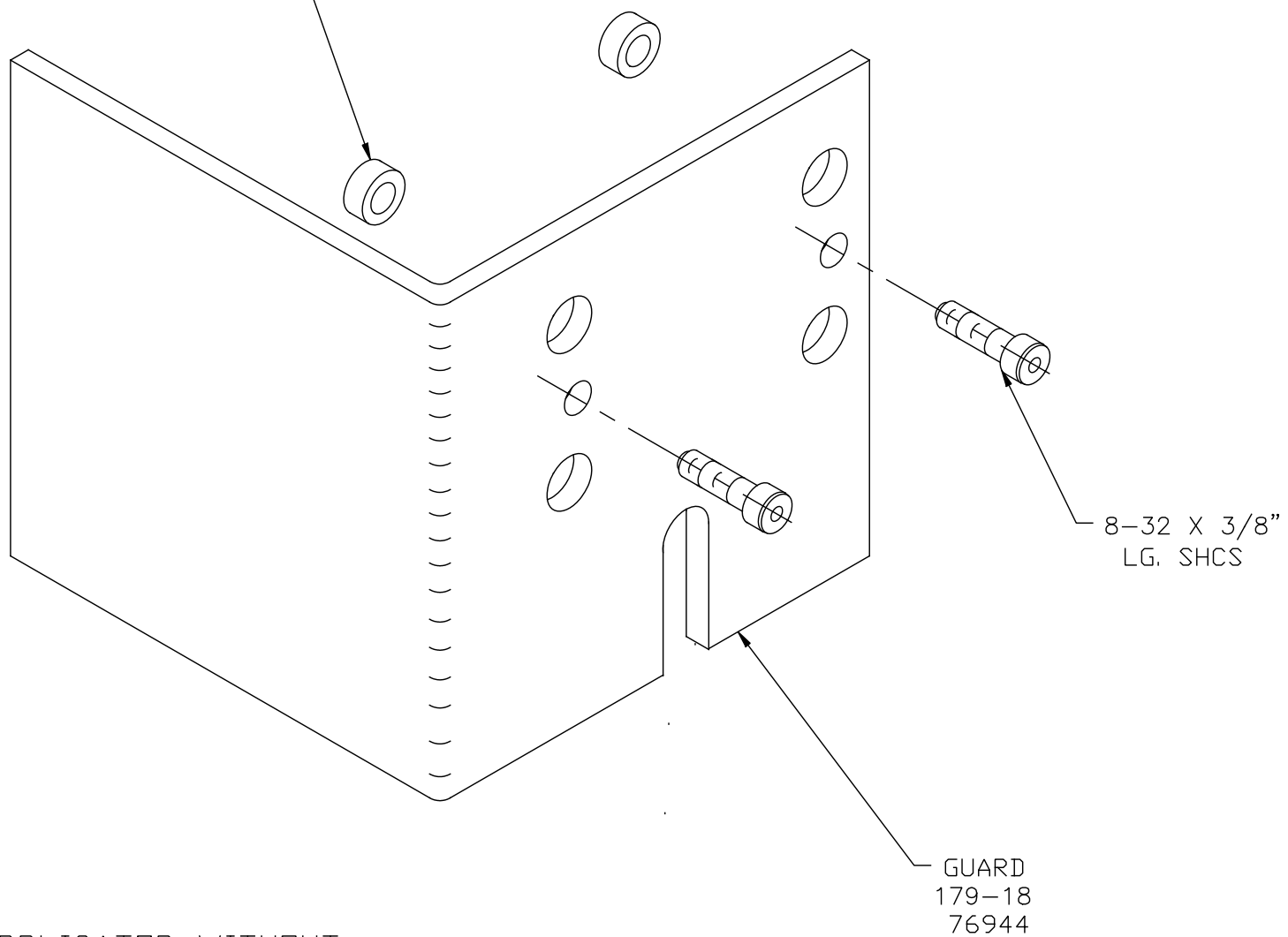


ECC APPLICATOR-REAR TOP CASTING ASSEMBLY R6E/R8E



GUARD SPACER
GS-050
76945
(2)

ECC APPLICATOR-REAR
SAFETY GUARD
R6E/R8E



NEVER OPERATE APPLICATOR WITHOUT
SAFETY GUARD IN POSITION.