

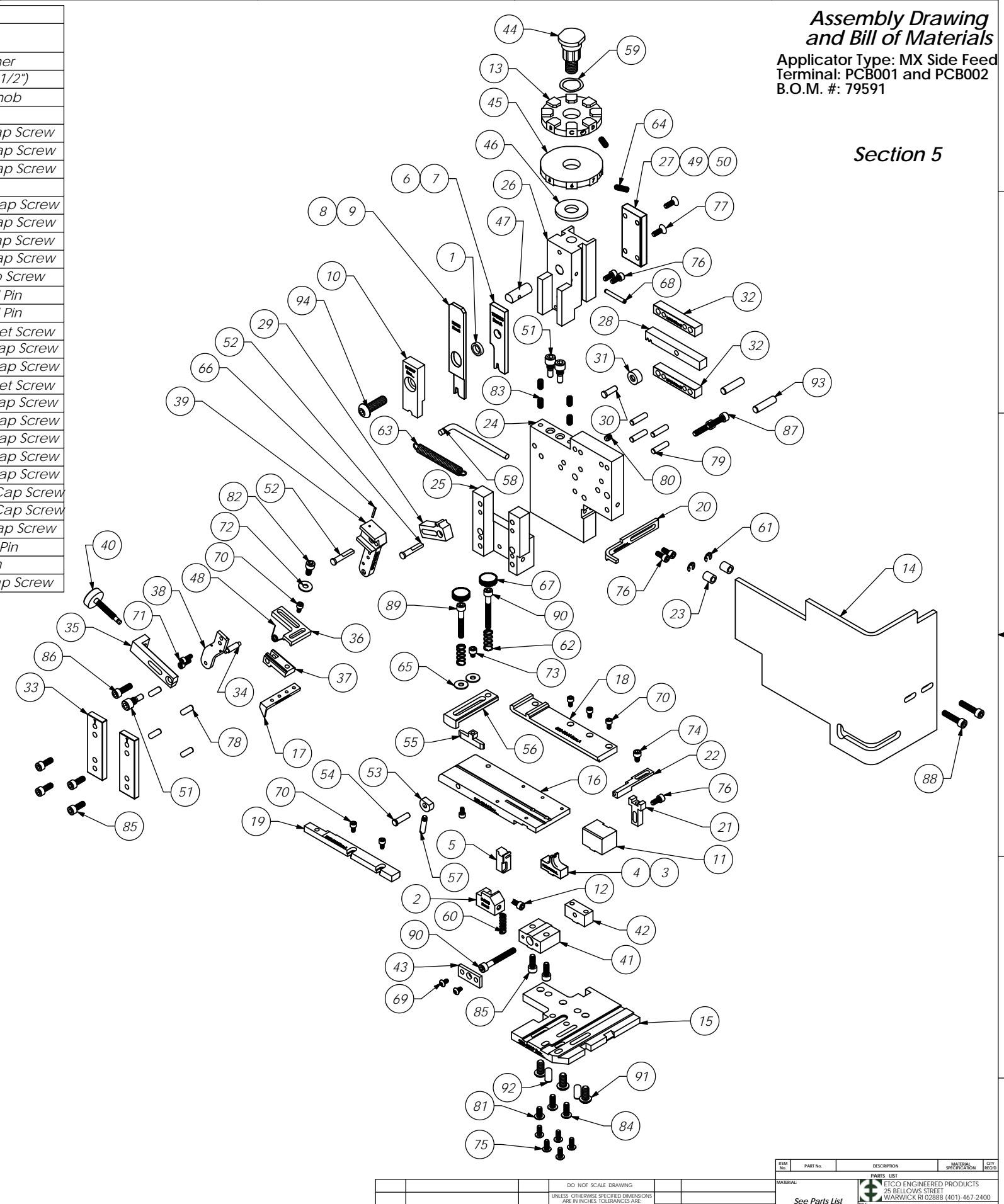
# Assembly Drawing and Bill of Materials

Applicator Type: MX Side Feed Terminal: PCB001 and PCB002  
B.O.M. #: 79591

## Section 5

Parts List				Parts List					
Item No.	QTY.	Part Code	Part No.	Description	Item No.	QTY.	Part Code	Part No.	Description
1	1	75078	127S-3001	IRT Spacer	65	2	72519	McMaster Carr #98029A043	#8 Hardened Washer
2	1	74440	8-3003	Front Cut-off Pad Retainer	66	1	74447	McMaster-Carr #98296A109	Expansion Pin (1/16 x 1/2")
3	1	100199	9-3159	Anvil - PCB002	67	2	73785	SPI 99-602-5	#10 Black Knurled Knob
4	1	76769	9-3044	Anvil - PCB001	68	1	62040	1.8_1.00rp	1/8" x 1" Roll Pin
5	1	77075	12-3044	Front Cut-off Pad	69	2	63792	6-32_.25bh	#6-32 x 1/4" Button Hd Cap Screw
6	1	100200	13-3159	Wire Rolling Tool - PCB002	70	7	63207	6-32_.25sh	#6-32 x 1/4" Socket Hd Cap Screw
7	1	76770	13-3044	Wire Rolling Tool - PCB001	71	2	63209	6-32_.38sh	#6-32 x 3/8" Socket Hd Cap Screw
8	1	100201	14-3159	Insulation Rolling Tool - PCB002	72	1	63210	8fw	#8 Flatwasher
9	1	76773	14-3044	Insulation Rolling Tool - PCB001	73	1	60265	8-32_.19sh	#8-32 x 3/16" Socket Hd Cap Screw
10	1	75863	15-3019	Cut-off Pad Driver	74	1	63163	8-32_.25sh	#8-32 x 1/4" Socket Hd Cap Screw
11	1	74802	26-3000	Backup Block	75	6	61472	8-32_.38bh	#8-32 x 3/8" Button Hd Cap Screw
12	1	77265	26-3088	Locking Screw	76	5	63161	8-32_.38sh	#8-32 x 3/8" Socket Hd Cap Screw
13	1	77615	34-3044	Wire Crimp Dial	77	2	63052	8-32_.50fh	#8-32 x 1/2" Flat Hd Cap Screw
14	1	76403	199-3005	Safety Guard	78	4	63158	3.16_.50dp	Φ 3/16" x 1/2" Dowel Pin
15	1	75762	200-3019	Baseplate	79	4	63470	3.16_.75dp	Φ 3/16" x 3/4" Dowel Pin
16	1	77070	250-3044	Feed Plate	80	2	63054	10-32_.25ss	#10-32 x 1/4" Socket Hd Set Screw
17	1	76484	303-3033	Feed Finger	81	1	78993	10-32_.38bh	#10-32 x 3/8" Button Hd Cap Screw
18	1	77071	500-3044	Rear Guide Rail	82	1	70110	10-32_.38sh	#10-32 x 3/8" Socket Hd Cap Screw
19	1	77072	1000-3044	Front Guide Rail	83	4	71626	10-32_.38ss	#10-32 x 3/8" Socket Hd Set Screw
20	1	77148	1600-3044	Stripper / Wire Stop	84	2	76501	10-32_.50bh	#10-32 x 1/2" Button Hd Cap Screw
21	1	74803	1600B-3000	Adjustable Stripper Holder	85	6	63056	10-32_.50sh	#10-32 x 1/2" Socket Hd Cap Screw
22	1	76681	1600A-3002	Adjustable Stripper Block	86	1	70293	10-32_.63sh	#10-32 x 5/8" Socket Hd Cap Screw
23	2	74491	GS-375	Guard Spacer	87	2	63532	10-32_.75sh	#10-32 x 3/4" Socket Hd Cap Screw
24	1	71029	MX2A-S	Mounting Frame	88	2	70925	10-32_.88sh	#10-32 x 7/8" Socket Hd Cap Screw
25	1	71030	MX2B-S	Plunger Frame	89	1	77396	10-32_1.25sh	#10-32 x 1 1/4" Socket Hd Cap Screw
26	1	74343	MX3	Ram	90	2	63826	10-32_1.50sh	#10-32 x 1 1/2" Socket Hd Cap Screw
27	1	74344	MX4-S	Cam (1 5/8" Up Stroke)	91	3	63632	1.4-20_.50bh	1/4-20 x 1/2" Button Hd Cap Screw
28	1	74438	MX5-S	Cam Rack	92	2	63827	1.4_.50dp	Φ 1/4" x 1/2" Dowel Pin
29	1	74346	MX6	Gear Arm	93	2	63510	1.4_1.00dp	1/4 x 1" Dowel Pin
30	1	74347	MX7	Cam Pin	94	1	63055	5.16-18_1.00bh	5/16-18 x 1" Button Hd Cap Screw
31	1	74350	MX8	Cam Roller					
32	2	74351	MX10-S	Rack Pad					
33	2	74352	MX11	Gib					
34	1	74356	MX12	Feed Finger Pivot Pin					
35	1	74360	MX13	Adjusting Bar					
36	1	74361	MX14-S	Feed Finger Arm					
37	1	74362	MX15-S	Feed Finger Guide					
38	1	74364	MX16	Retainer					
39	1	74371	MX18-S	Swing Arm					
40	1	74376	MX25	Stroke Adjustment Screw					
41	1	74384	MX29-S	Slide Support					
42	1	74388	MX30-S	Support Anchor					
43	1	74390	MX32-S	Support Cover					
44	1	74407	MX33	Mounting Post					
45	1	74409	MX35	Insulation Dial					
46	1	74411	MX36	Dial Spacer					
47	1	74412	MX44	Locating Dowel					
48	1	74415	MX45-S	Feed Finger Spring					
49	1	74416	MX47-S	Cam (1 5/8" Down stroke)					
50	1	74417	MX48-S	Cam (1 1/8" Up Stroke)					
51	3	74419	MX50	Safety Pivot Pin					
52	2	74420	MX52	Pivot Pin					
53	1	74425	MX84-S	Brake Cam					
54	1	74426	MX85-S	Cam Pivot Pin					
55	1	74428	MX86-S	Brake Shoe					
56	1	75915	MX87-1-S	Lift Arm					
57	1	74430	MX88-S	Lever					
58	1	74614	MX90-S	Spring Bracket					
59	1	72310	MX104	Wave Disc Spring					
60	1	74578	4-034-875	Spring					
61	2	75083	Irving 3100-18	External Retaining Ring					
62	2	77322	LC-045E-10-M	Spring					
63	1	74611	LE-037CD-6	Extension Spring					
64	2	70739	McMaster-Carr #3126A53	Spring Plunger					

NOTE:  
 (1) Items marked in bold text are high wear items.  
 (2) Use OEM replacement tooling only.  
 (3) Recommended machine speed for automatic equipment is a maximum of 3500 parts per hour.



NOTE: ITEMS MARKED IN BOLD TEXT ARE HIGH WEAR ITEMS

REV	PART No.	DESCRIPTION	MATERIAL SPECIFICATION	QTY	RECD
B	ECR# 4467	SCJ	120176		
A	ECR# 2330	SCJ	77073		
	Redrawn in SolidWorks	cg	06/Ann07		
LVL	REVISION	BY/DATE			

DO NOT SCALE DRAWING		UNLESS OTHERWISE SPECIFIED DIMENSIONS ARE IN INCHES. TOLERANCES ARE:	
FRACTIONS	DECIMALS	ANGLES	
±.004	±.01	±1/2°	
±.001	±.005	±1/4°	
±.0005	±.001	±1/8°	
±.0001	±.0005	±1/16°	

MATERIAL:	See Parts List	DATE:	
HEAT TREAT:		CHECKED BY:	
FINISH:		DATE:	
SCALE:	1:1	DRAWN BY:	
APPLICATION:		DATE:	

DATE:	06/Ann07	SCALE:	1:1
BY:	cg	CHECKED BY:	
DATE:		DATE:	
SCALE:		SCALE:	
APP:		APP:	