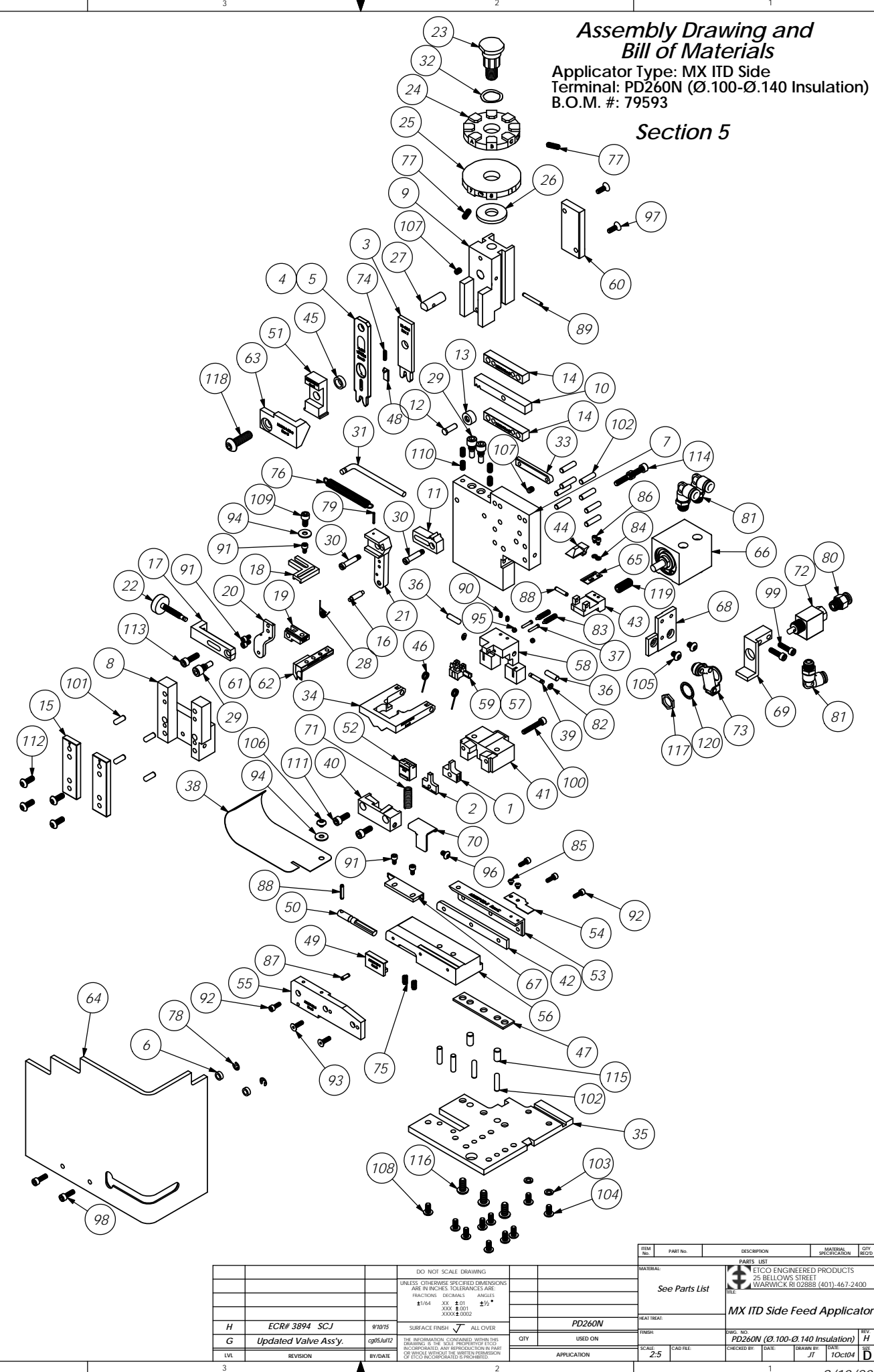


ITEM NO.	Part Code	PART NUMBER	DESCRIPTION	QTY.	ITEM NO.	Part Code	PART NUMBER	DESCRIPTION	QTY.
1	76678	9-4004	Wire Anvil	1	68	78733	MX358-1-ITD-S	Valve Mounting Plate	1
2	76679	9A-4004	Insulation Anvil	1	69	61993	MX358-2-ITD-S	Valve Mounting Plate	1
3	76680	13-4004	Wire Rolling Tool	1	70	78835	MX360-ITD-S	Scrap Retainer	1
4	76659	14-4004	Insulation Rolling Tool	1	71	72350	5-047x1.000	Compression Spring	1
5	70875	14-4006	Ins. Rolling Tool (Overlap style)	1	72	72318	Clippard MJV-3	3-Way Valve	1
6	73888	GS-125	Guard Spacer	2	73	72317	Clippard #12296	Cam Follower	1
7	71494	MX2A-S-1	Mounting Frame	1	74	72315	LC-022A-4	Compression Spring	1
8	71030	MX2B-S	Plunger Frame	1	75	78681	LC-029B-3-M	Compression Spring	2
9	74343	MX3	Ram	1	76	74611	LE-037CD-6	Extension Spring	1
10	74438	MX5-S	Cam Rack	1	77	70739	McMaster-Carr #3126A53	Spring Plunger	2
11	74346	MX6	Gear Arm	1	78	72069	McMaster Carr #98407A118	#8 E-Style Retaining Ring	2
12	74347	MX7	Cam Pin	1	79	74447	McMaster-Carr #98296A109	Expansion Pin (1/16 x 1/2")	1
13	74350	MX8	Cam Roller	1	80	73222	Pisco PC250-N1U	1/4" x 1/8" NPT Straight	1
14	74351	MX10-S	Rack Pad	2	81	72352	Pisco PL250-N1U	Ø1/4" x 1/8" NPT Elbow Fitting	3
15	74352	MX11	Gib	2	82	63200	Truarc #5555-12	Retaining Ring	2
16	74356	MX12	Feed Finger Pivot Pin	1	83	63201	Vlier #PH-51-P	Spring Plunger	2
17	74360	MX13	Adjusting Bar	1	84	63202	4lw	#4 Lock Washer	2
18	76868	MX14-1-S	Feed Finger Arm	1	85	63203	4-40_13bh	#4-40 x 1/8" Button Hd Cap Screw	2
19	76874	MX15-1-S	Feed Finger Guide	1	86	63204	4-40_16sh	#4-40 x 5/32" Socket Hd Cap Screw	2
20	74364	MX16	Retainer	1	87	63205	1.8_38rp	Ø 1/8" x 3/8" Roll Pin	1
21	71495	MX18-S-1	Swing Arm	1	88	63053	1.8_63rp	1/8" x 5/8" Roll Pin	2
22	74376	MX25	Stroke Adjustment Screw	1	89	62040	1.8_1.00rp	1/8" x 1" Roll Pin	1
23	74407	MX33	Mounting Post	1	90	63206	5-40_19ssf	#5-40 x 3/16" Socket Set Screw	2
24	70659	MX34-B	Wire Crimp Dial	1	91	63207	6-32_25sh	#6-32 x 1/4" Socket Hd Cap Screw	5
25	74409	MX35	Insulation Dial	1	92	63209	6-32_38sh	#6-32 x 3/8" Socket Hd Cap Screw	4
26	74411	MX36	Dial Spacer	1	93	63057	6-32_50fh	#6-32 x 1/2" Flat Hd Cap Screw	2
27	74412	MX44	Locating Dowel	1	94	63210	8fw	#8 Flatwasher	2
28	74415	MX45-S	Feed Finger Spring	1	95	63211	8-32_13ssf	#8-32 x 1/8" Socket Hd Set Screw	2
29	74419	MX50	Safety Pivot Pin	3	96	63212	8-32_25bh	#8-32 x 1/4" Button Hd Cap Screw	1
30	71493	MX52-S-1	Pivot Pin	2	97	63052	8-32_50fh	#8-32 x 1/2" Flat Hd Cap Screw	2
31	74614	MX90-S	Spring Bracket	1	98	63164	8-32_50sh	#8-32 x 1/2" Socket Hd Cap Screw	2
32	72310	MX104	Wave Disc Spring	1	99	63162	8-32_63sh	#8-32 x 5/8" Socket Hd Cap Screw	2
33	71678	MX105-S	Pivot Pin Plate	1	100	63213	8-32_1.00sh	#8-32 x 1" Socket Hd Cap Screw	1
34	76946	MX301-3-ITD-S	Latching Gate	1	101	63158	3.16_50dp	Ø 3/16" x 1/2" Dowel Pin	4
35	72261	MX302-1-ITD-S	Base Plate	1	102	63470	3.16_75dp	Ø 3/16" x 3/4" Dowel Pin	12
36	76563	MX304-ITD-S	Hinge Pin	2	103	78517	10lw	#10 Lockwasher	2
37	76564	MX305-ITD-S	Pin	2	104	63531	10-24_38bh	#10-24 x 3/8" Button Hd Cap Screw	2
38	76566	MX307-ITD-S	Stock Chute	1	105	78687	10-32_25bh	#10-32 x 1/4" Button Hd Cap Screw	2
39	76567	MX308-ITD-S	Latch Pivot Pin	1	106	78327	10-32_13bh	#10-32 x 1/8" Button Hd Cap Screw	1
40	78936	MX309-4-ITD-S	Cut-off Keeper	1	107	63054	10-32_25ss	#10-32 x 1/4" Socket Hd Set Screw	2
41	72257	MX310-1-ITD-S	Die Holder	1	108	78993	10-32_38bh	#10-32 x 3/8" Button Hd Cap Screw	8
42	76570	MX311-ITD-S	Left Feed Shim (1/4")	1	109	70110	10-32_38sh	#10-32 x 3/8" Socket Hd Cap Screw	1
43	72259	MX313-1-ITD-S	Insulation Pusher for 1/4" Terminal	1	110	63056	10-32_38ssf	#10-32 x 3/8" Socket Hd Set Screw	4
44	76573	MX314-ITD-S	Catch	1	111	63056	10-32_50sh	#10-32 x 1/2" Socket Hd Cap Screw	2
45	76574	MX315-ITD-S	Insulation Tool Spacer	1	112	76501	10-32_50bh	#10-32 x 1/2" Button Hd Cap Screw	4
46	76575	MX316-ITD-S	Latch Spring	2	113	70293	10-32_63sh	#10-32 x 5/8" Socket Hd Cap Screw	1
47	76576	MX317-ITD-S	Base Plate Spacer	1	114	63532	10-32_75sh	#10-32 x 3/4" Socket Hd Cap Screw	2
48	76578	MX319-ITD-S	Knock off	1	115	63827	1.4_50dp	Ø 1/4" x 1/2" Dowel Pin	2
49	76579	MX320-ITD-S	Brake	1	116	63632	1.4-20_50bh	1/4-20 x 1/2" Button Hd Cap Screw	3
50	76580	MX321-ITD-S	Brake Actuator	1	117	15.32_32 hex nut	Hex Nut	1	
51	76583	MX324-ITD-S	Cut-off Pad Pusher	1	118	63055	5.16-18_1.00bh	5/16-18 x 1" Button Hd Cap Screw	1
52	78935	MX326-4-ITD-S	Cut-off Pad	1	119	71086	5.16-24_75ssf	5/16-24 x 3/4" Socket Hd Set Screw	1
53	76586	MX327-ITD-S	Left Feed Rail	1	120		1.2isw	1/2" Internal Star Washer	1
54	76587	MX328-ITD-S	Hold Down Spring	1					
55	76588	MX329-ITD-S	Right Feed Rail	1					
56	76589	MX330-ITD-S	Feed Plate	1					
57	76590	MX331-ITD-S	Latch (Automatic)	1					
58	76591	MX332-ITD-S	Support	1					
59	76592	MX333-ITD-S	Latch (1/4" Wire Stop)	1					
60	76608	MX335-ITD-S	Cam	1					
61	76661	MX337-ITD-S	Feed Finger (fed between carrier and inslu ear)	1					
62	71686	MX337-2-ITD-S	Feed Finger (fed in carrier strip hole)	1					
63	72233	MX338-1-ITD-S	Arm Switch Cam (1 1/8" Stroke)	1					
64	70745	MX339-ITD-S	Guard	1					
65	72260	MX344-1-ITD-S	Leaf Spring	1					
66	72099	MX348-ITD-S	.550 Strike Slide Cylinder	1					
67	72893	MX357-ITD-S	Bracket	1					

NOTE: ITEMS MARKED IN BOLD TEXT ARE HIGH WEAR ITEMS

NOTE:
 (1) Items marked in bold text are high wear items.
 (2) Use OEM replacement tooling only.
 (3) Recommended machine speed for automatic equipment is a maximum of 3500 parts per hour.



Assembly Drawing and Bill of Materials
 Applicator Type: MX ITD Side Feed Applicator
 Terminal: PD260N (Ø.100-Ø.140 Insulation)
 B.O.M. #: 79593

Section 5

REV	DATE	DESCRIPTION	BY	CHKD	APP'D
H		ECR# 3894 SCJ	gms/aur		
G		Updated Valve Assy.	gms/aur		
LVL		REVISION	BY/DATE		

REV	DATE	DESCRIPTION	BY	CHKD	APP'D
		DO NOT SCALE DRAWING			
		UNLESS OTHERWISE SPECIFIED DIMENSIONS ARE IN INCHES. DECIMALS ARE FRACTIONS. DIMENSIONS ARE IN MILLIMETERS. ANGLES ARE IN DEGREES. UNLESS OTHERWISE SPECIFIED, DIMENSIONS ARE TO CENTER UNLESS OTHERWISE SPECIFIED.			
		SURFACE FINISH: ALL OVER			
		THE INFORMATION CONTAINED HEREIN IS THE PROPERTY OF ETCO ENGINEERED PRODUCTS AND IS TO BE USED ONLY FOR THE PURPOSES SPECIFIED IN THIS DRAWING. NO OTHER REPRODUCTION OR DISSEMINATION OF THIS INFORMATION IS PERMITTED WITHOUT THE WRITTEN PERMISSION OF ETCO ENGINEERED PRODUCTS.			

REV	DATE	DESCRIPTION	BY	CHKD	APP'D
		See Parts List			
		ETCO ENGINEERED PRODUCTS 25 BELLOWS STREET WARWICK, RI 02888 (401) 467-2400			
		MX ITD Side Feed Applicator			
		PD260N			
		SCALE: 2.5			
		DATE: 10/10/2015			