



REFERENCE LIST:
BC-140
ECC APPLICATOR
BILL OF MATERIAL NUMBER
79606

WARNING !
NEVER OPERATE
THIS OR ANY
APPLICATOR
WITHOUT SAFETY
GUARD IN POSITION.

PART CODE	PART NUMBER	QUANTITY	DESCRIPTION
76858	301-3	(1)	SHOULDER SCREW
73869	7A-BC140	(1)	FEED FINGER
76788	307-5	(1)	FEED TENSION SPRING
77269	304-375	(1)	SPACER REAR
74400	308	(1)	FEED SHAFT
74393	305	(1)	FEED FINGER ARM
74396	306	(1)	FEED FINGER STOP
74495	401	(1)	BRAKE SHAFT
74498	403-1	(1)	BRAKE BODY
74676	407	(1)	BRAKE SPRING
74496	402	(1)	SPRING RETAINER
74675	406	(1)	COTTER PIN
74673	404	(1)	BRAKE CAM
74674	405	(1)	TAPER PIN
77154	408-812	(1)	BRAKE BUSHING
73899	101	(1)	TOP CASTING
76969	169	(1)	UNIVERSAL GIB
74402	310	(1)	CAM RETURN SPRING
74410	314L-2	(1)	CAM
74403	311	(1)	SPRING PIN
74404	312	(1)	CAM TAPER PIN
75710	1125	(1)	CAM ROLLER BRACKET
75719	1142	(1)	CAM ROLLER BEARING
75496	1101-FS	(1)	PLUNGER
72584	*13-R17A	(1)	WIRE ROLLING TOOL
77918	1102-FS	(1)	FLOATING SHANK
75729	1156	(1)	PLUNGER SCREW
71850	*12-BC140	(1)	CUT-OFF PUNCH
71139	*9-R17A	(1)	ANVIL
73955	235	(1)	GUIDE SPACER
70490	*8B-BC-140	(1)	DIE
73952	231	(1)	SPRING
74289	264	(1)	DIE PLATE
73934	201	(1)	BASE PLATE
75392	1000	(1)	FRONT GUIDE
73922	176	(1)	GUARD

NOTE: ITEMS MARKED WITH AN *
ARE HIGH WEAR ITEMS



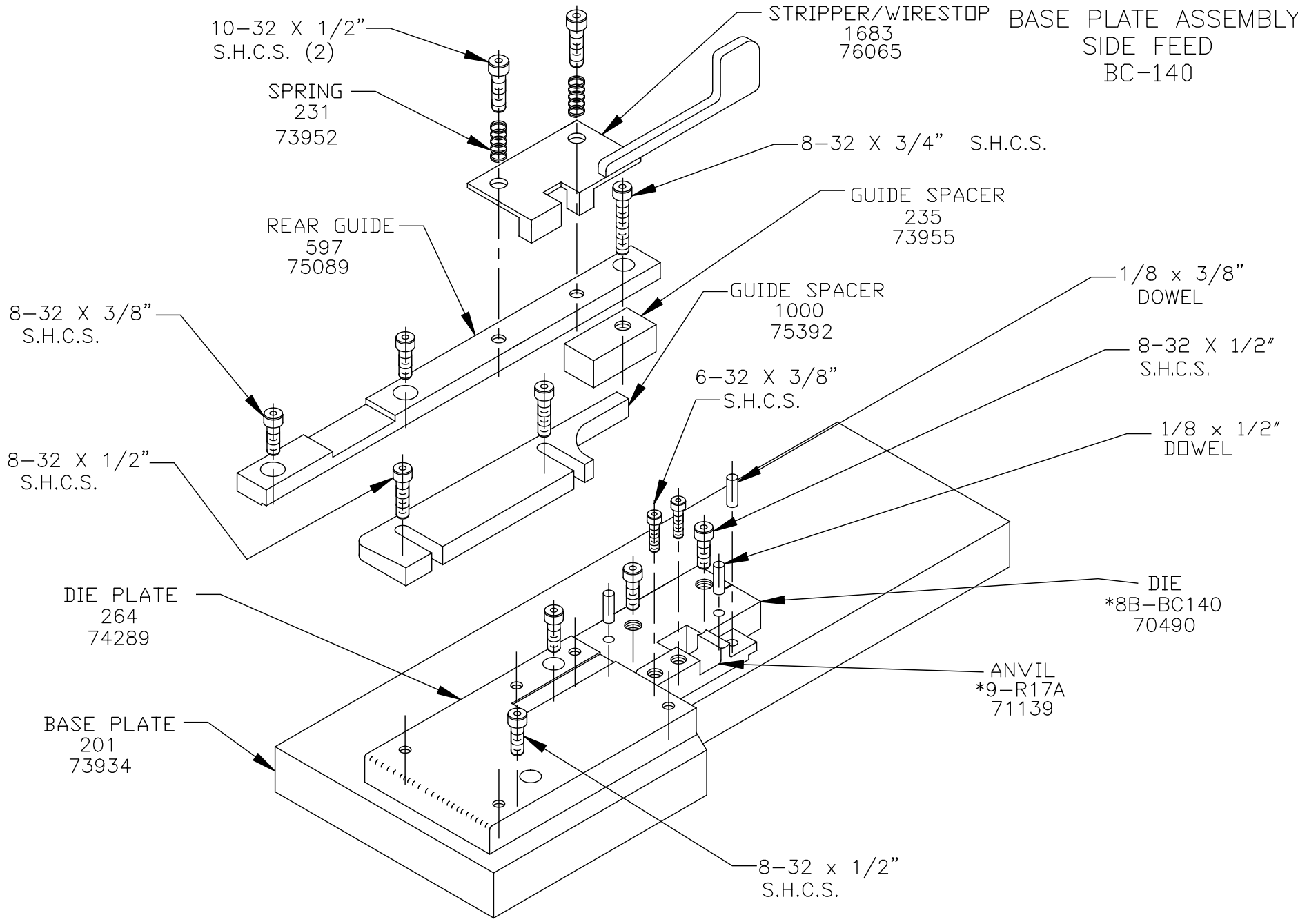
**REFERENCE LIST:
BC-140
ECC APPLICATOR
BILL OF MATERIAL NUMBER
79606**

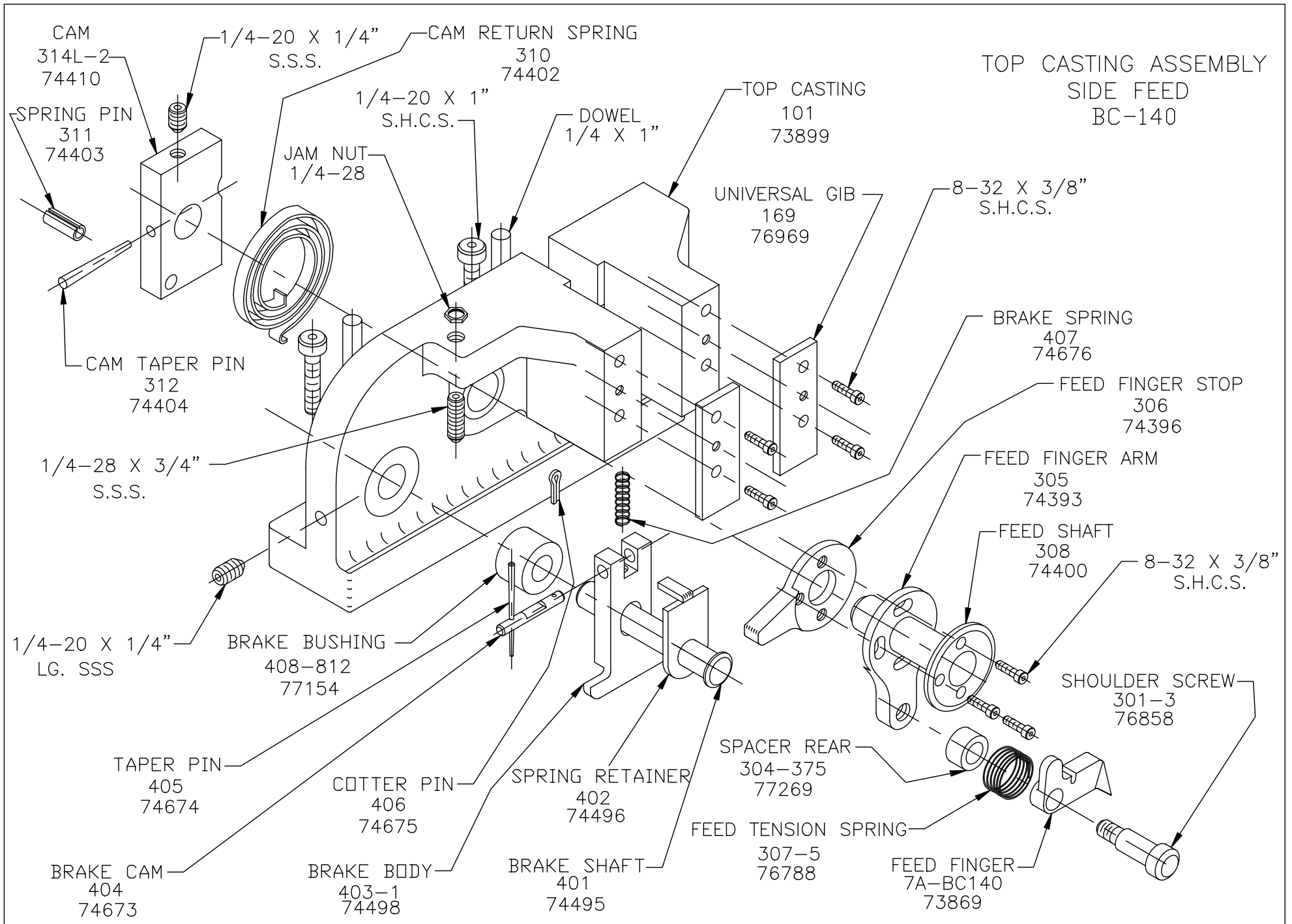
**WARNING !
NEVER OPERATE
THIS OR ANY
APPLICATOR
WITHOUT SAFETY
GUARD IN POSITION.**

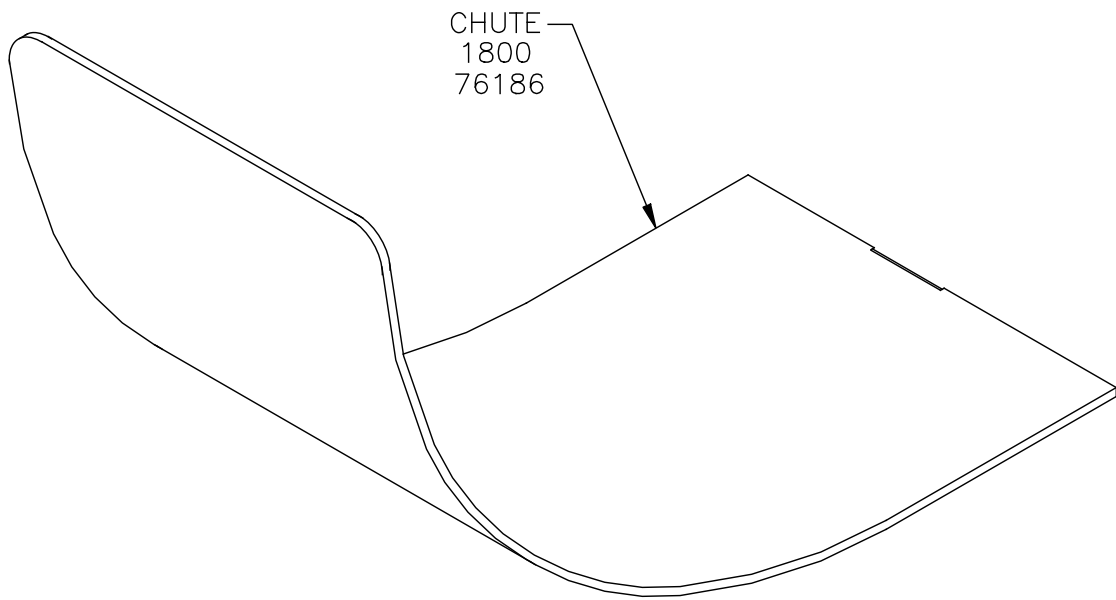
PART CODE	PART NUMBER	QUANTITY	DESCRIPTION
75089	597	(1)	REAR GUIDE
76065	1683	(1)	STRIPPER/WIRESTOP
76186	1800	(1)	STOCK CHUTE
		(2)	6-32 X 3/8" S.H.C.S.
		(12)	8-32 X 3/8" S.H.C.S.
		(6)	8-32 X 1/2" S.H.C.S.
		(1)	8-32 X 3/4" S.H.C.S.
		(1)	10-32 X 3/8" S.H.C.S.
		(2)	10-32 X 1/2" S.H.C.S.
		(2)	1/4-20 X 1/4" S.S.S.
		(1)	1/4-28 X 3/4" S.S.S.
		(2)	1/4-20 X 1" S.H.C.S.
		(1)	1/4-28 JAM NUT
		(1)	5/16 X 3/4" SHOULDER SCREW
		(1)	1/8 X 3/8" DOWEL
		(2)	1/8 X 1/2" DOWEL
		(2)	1/4 X 1" DOWEL

**NOTE: ITEMS MARKED WITH AN *
ARE HIGH WEAR ITEMS**

STRIPPER/WIRESTOP BASE PLATE ASSEMBLY
SIDE FEED
BC-140

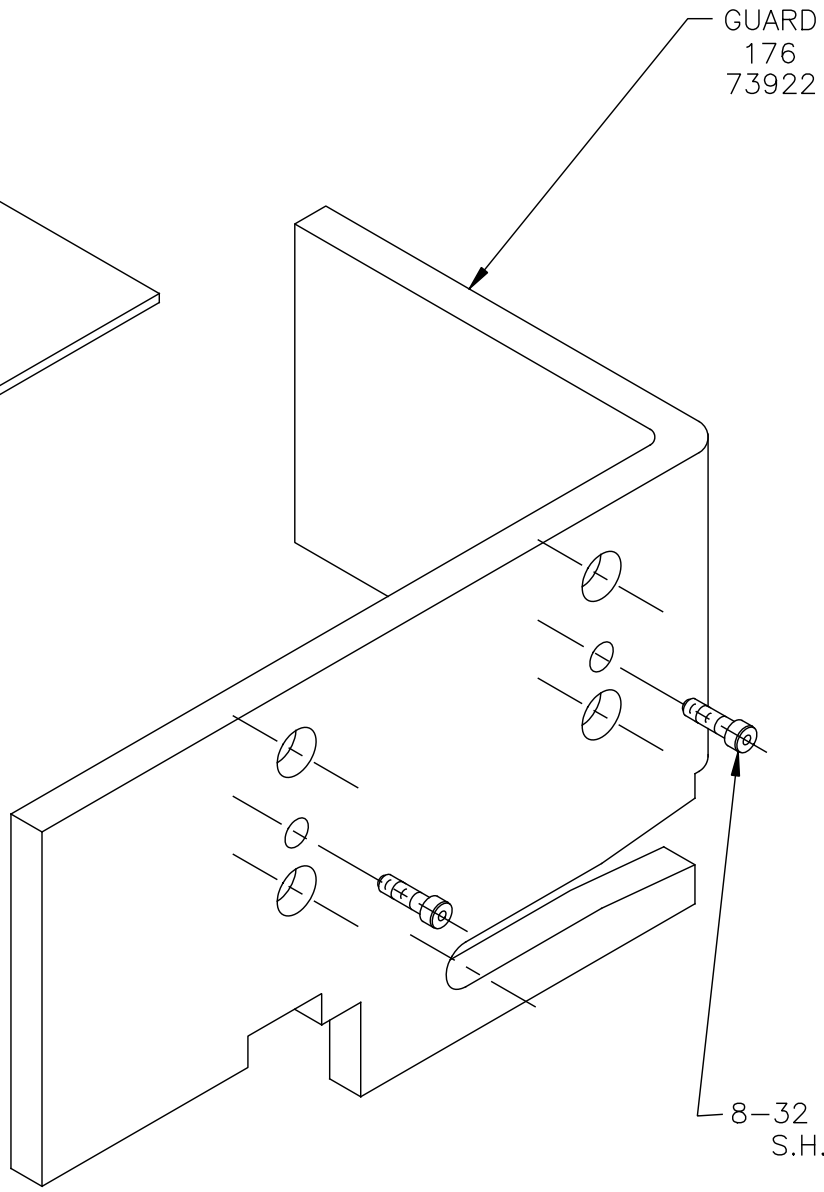




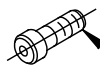


CHUTE
1800
76186

CHUTE AND GUARD BC-140



GUARD
176
73922



8-32 X 3/8"
S.H.C.S.

8-32 X 3/8"
S.H.C.S.

NEVER OPERATE APPLICATOR WITHOUT
SAFETY GUARD IN POSITION.

PLUNGER ASSEMBLY
SIDE FEED
BC-140

