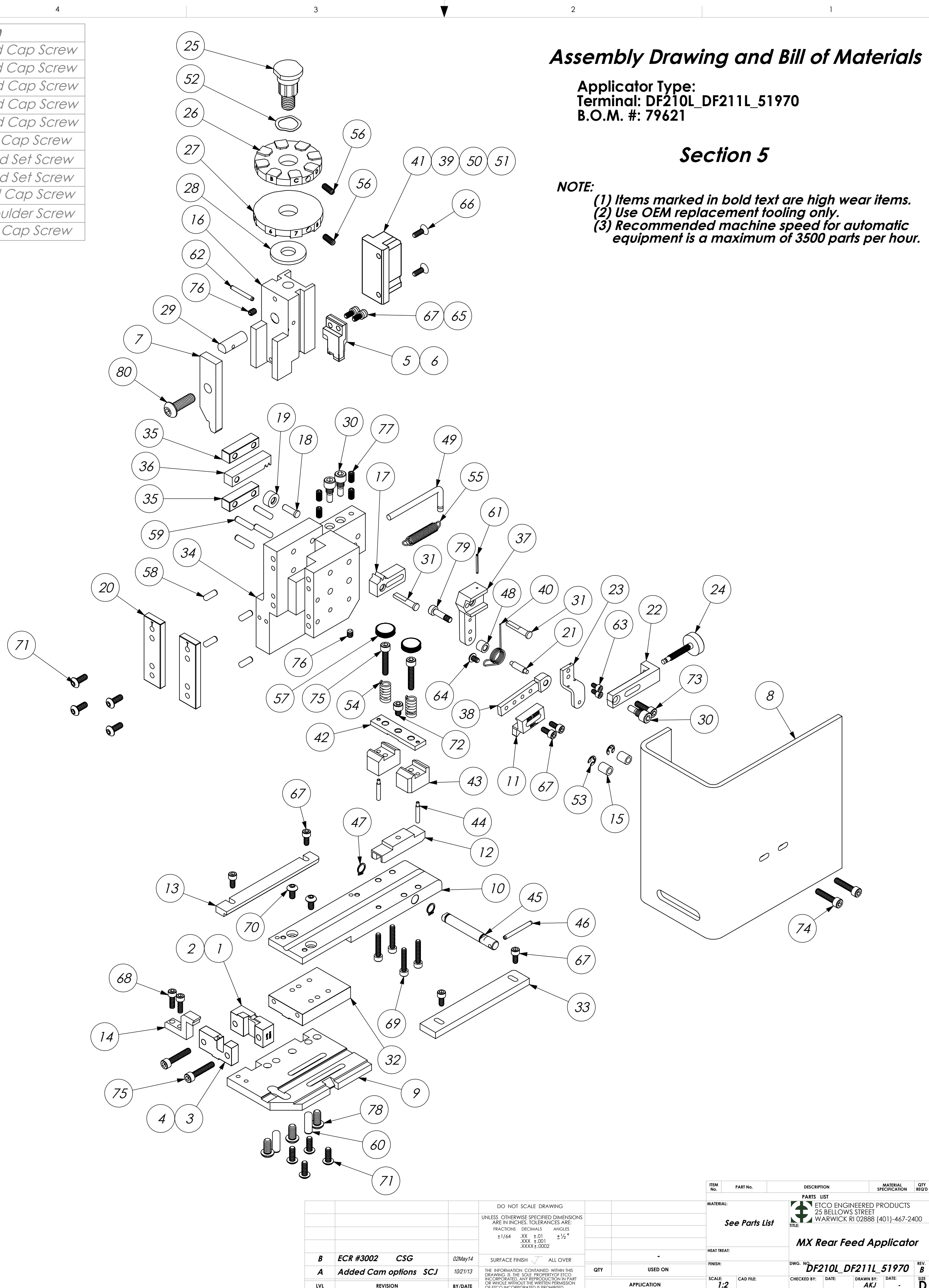


Item	Part Code	QTY.	Part No./File Name	Description
1	76441	1	8-3035 (DF211)	Cut-off Die
2	77235	1	8-3052(DF210/51970)	Cut-off Die
3	76440	1	9-3035 (DF211)	Wire Anvil
4	78597	1	9-3035-1 (DF210/51970)	Wire Anvil
5	64193	1	12-3035 (DF211)	Cut-Off Punch
6	77234	1	12-3052 (DF210/51970)	Cut-Off Punch
7	76439	1	13-3035	Wire Rolling Tool
8	75285	1	199-3001	Guard
9	76488	1	200-3035	Baseplate
10	76487	1	250-3035	Feed Plate
11	74919	1	303-3008	Feed Finger
12	76490	1	403-3035	Brake Shoe
13	76489	1	1000-3035	Left Guide Rail
14	76486	1	1600-3035	Stripper
15	74491	2	GS-375	Guard Spacer
16	74343	1	MX3	Ram
17	74346	1	MX6	Gear Arm
18	74347	1	MX7	Cam Pin
19	74350	1	MX8	Cam Roller
20	74352	2	MX11	Gib
21	74356	1	MX12	Feed Finger Pivot Pin
22	74360	1	MX13	Adjusting Bar
23	74364	1	MX16	Retainer
24	74376	1	MX25	Stroke Adjustment Screw
25	74407	1	MX33	Mounting Post
26	72367	1	34-3064	Wire Crimp Dial
27	74409	1	MX35	Insulation Dial
28	74411	1	MX36	Dial Spacer
29	74412	1	MX44	Locating Dowel
30	74419	3	MX50	Safety Pivot Pin
31	74420	2	MX52	Pivot Pin
32	74908	1	MX54-R	Slide Support
33	74818	1	MX57-R-1	Right Guide Rail
34	74909	1	MX58-R	Frame
35	74913	2	MX70-R	Lower Rack Pad
36	74914	1	MX71-R	Cam Rack
37	72285	1	MX72-R-1	Swing Arm
38	72287	1	MX73-R-1	Feed Arm
39	74915	1	MX75-R	Cam, 1 5/8" Downstroke
40	72596	1	MX80-1-R	Feed Finger Spring
41	74521	1	MX89-R	Cam, 1 1/8" Upstroke
42	74820	1	MX91-R	Lifter Plate
43	74821	2	MX92-R	Brake Support
44	74822	2	MX93-R	Lifter
45	74823	1	MX94-R	Brake Shaft
46	74825	1	MX96-R	Brake Handle
47	74827	2	MX97-R	Retaining Ring
48	72286	1	MX99-R-1	Spacer
49	74917	1	MX100-R	Spring Bracket
50	76682	1	MX101-R	Cam, 1 5/8" Upstroke
51	72204	1	MX102-R	Cam (K Press Down Stroke)
52	72310	1	MX104	Wave Disc Spring
53	75083	2	Irving 3100-18	External Retaining Ring
54	75342	2	LC-045E-6-M	Brake Spring
55	74611	1	LE-037CD-6	Extension Spring
56	70739	2	McMaster-Carr #3126A53	Spring Plunger
57	73785	2	SPI 99-602-5	#10 Black Knurled Knob
58	63158	4	3.16_.50dp	Ø 3/16" x 1/2" Dowel Pin
59	63470	4	3.16_.75dp	Ø 3/16" x 3/4" Dowel Pin
60		2	1.4_.75dp	1/4" x 3/4" Dowel Pin
61	62294	1	1.16_.75rp	1/16" x 3/4" Roll Pin
62	62040	1	1.8_1.00rp	1/8" x 1" Roll Pin
63	63207	2	6-32_.25sh	#6-32 x 1/4" Socket Hd Cap Screw
64	63212	1	8-32_.25bh	#8-32 x 1/4" Button Hd Cap Screw
65		2	8-32_.31sh	#8-32 x 5/16" Socket Hd Cap Screw
66	63052	2	8-32_.50fh	#8-32 x 1/2" Flat Hd Cap Screw
67	63161	8	8-32_.38sh	#8-32 x 3/8" Socket Hd Cap Screw
68	63164	2	8-32_.50sh	#8-32 x 1/2" Socket Hd Cap Screw
69	63949	4	8-32_.88sh	#8-32 x 7/8" Socket Hd Cap Screw

Item	Part Code	QTY.	Part No./File Name	Description
70	78993	2	10-32_.38bh	#10-32 x 3/8" Button Hd Cap Screw
71	76501	8	10-32_.50bh	#10-32 x 1/2" Button Hd Cap Screw
72	63473	1	10-32_.25sh	#10-32 x 1/4" Socket Hd Cap Screw
73	70293	1	10-32_.63sh	#10-32 x 5/8" Socket Hd Cap Screw
74	70925	2	10-32_.88sh	#10-32 x 7/8" Socket Hd Cap Screw
75	63155	4	10-32_1.00sh	#10-32 x 1" Socket Hd Cap Screw
76	63054	3	10-32_.25ss	#10-32 x 1/4" Socket Hd Set Screw
77	71626	4	10-32_.38ss	#10-32 x 3/8" Socket Hd Set Screw
78	63632	3	1.4-20_.50bh	1/4-20 x 1/2" Button Hd Cap Screw
79	63194	1	3.16_10-32_.50 shs	3/16" x 1/2" x 10-32 Shoulder Screw
80	63055	1	5.16-18_1.00bh	5/16-18 x 1" Button Hd Cap Screw

NOTE: ITEMS MARKED IN BOLD TEXT ARE HIGH WEAR ITEMS

NOTE:
1. THE 12-3035 CUT-OFF PUNCH IS USED ON DF211 WITH TWO #8-32 X 3/8" SOCKET HEAD CAP SCREWS.
2. THE 12-3052 CUT-OFF PUNCH IS USED ON DF210L & 51970 WITH TWO #8-32 X 5/16" SOCKET HEAD CAP SCREWS.



Assembly Drawing and Bill of Materials

Applicator Type:
Terminal: DF210L_DF211L_51970
B.O.M. #: 79621

Section 5

NOTE:
(1) Items marked in bold text are high wear items.
(2) Use OEM replacement tooling only.
(3) Recommended machine speed for automatic equipment is a maximum of 3500 parts per hour.

ITEM NO.	PART NO.	DESCRIPTION	MATERIAL SPECIFICATION	QTY REQD
DO NOT SCALE DRAWING				
UNLESS OTHERWISE SPECIFIED DIMENSIONS ARE IN INCHES. TOLERANCES ARE:				
FRACTIONS DECIMALS ANGLES				
±1/64 .001 .010 ±1/2°				
XXXX .002 XXXX .002				
SURFACE FINISH: ALL OVER				
THE INFORMATION CONTAINED WITHIN THIS DRAWING IS THE SOLE PROPERTY OF ETCO. INCORPORATED. ANY REPRODUCTION IN PART OR WHOLE WITHOUT THE WRITTEN PERMISSION OF ETCO INCORPORATED IS PROHIBITED.				
B ECR #3002 CSG 02/May/14 A Added Cam options SCJ 10/21/13		QTY USED ON APPLICATION	FINISH SCALE: 1:2 CAD FILE:	DWG NO: DF210L_DF211L_51970 CHECKED BY: DATE: DRAWN BY: AKJ REV: B DATE: