



**REFERENCE LIST:  
RE93-2  
ECC APPLICATOR  
BILL OF MATERIAL NUMBER  
79639**

**WARNING !  
NEVER OPERATE  
THIS OR ANY  
APPLICATOR  
WITHOUT SAFETY  
GUARD IN POSITION.**

PART CODE	PART NUMBER	QUANTITY	DESCRIPTION
75537	11018FS	(1)	PLUNGER
77918	1102-FS	(1)	FLOATING SHANK
		N/A	CUT-OFF SCREW
75728	1155	(1)	ADJUST SCREW
75725	1150-1	(1)	INSULATION BLOCK
75710	1125	(1)	CAM ROLLER BRACKET
75719	1142	(1)	CAM ROLLER BEARING
73518	17-063	(1)	SPACER
74410	314L-2	(1)	CAM
74403	311	(1)	SPRING PIN
74404	312	(1)	CAM TAPER PIN
74402	310	(1)	CAM RETURN SPRING
73899	101	(1)	TOP CASTING
73397	205-10	(1)	BASE PLATE
76969	169	(2)	UNIVERSAL GIBS
74675	406	(1)	COTTER PIN
74676	407	(1)	BRAKE SPRING
73401	408-1070	(1)	BRAKE BUSHING
74674	405	(1)	TAPER PIN
74673	404	(1)	BRAKE CAM
74578	408-78BW	(1)	BRAKE BODY
74496	402	(1)	SPRING RETAINER
74495	401	(1)	BRAKE SHAFT
74396	306	(1)	FEED FINGER STOP
74393	305	(1)	FEED FINGER ARM
74400	308	(1)	FEED SHAFT
73400	304-841	(1)	REAR SPACER
76743	307-16	(1)	FEED TENSION SPRING
74326	303-1	(1)	FEED FINGER
73399	302-160	(1)	FRONT SPACER
76923	301-6	(1)	SHOULDER SCREW
73952	231	(2)	STRIPPER SPRING
75921	1600-148	(1)	WIRE STRIPPER / STOP
73979	250-22	(1)	DIE PLATE
74890	500-200	(1)	REAR GUIDE
75289	1000-88	(1)	FRONT GUIDE

**NOTE: ITEMS MARKED WITH AN \*  
ARE HIGH WEAR ITEMS**



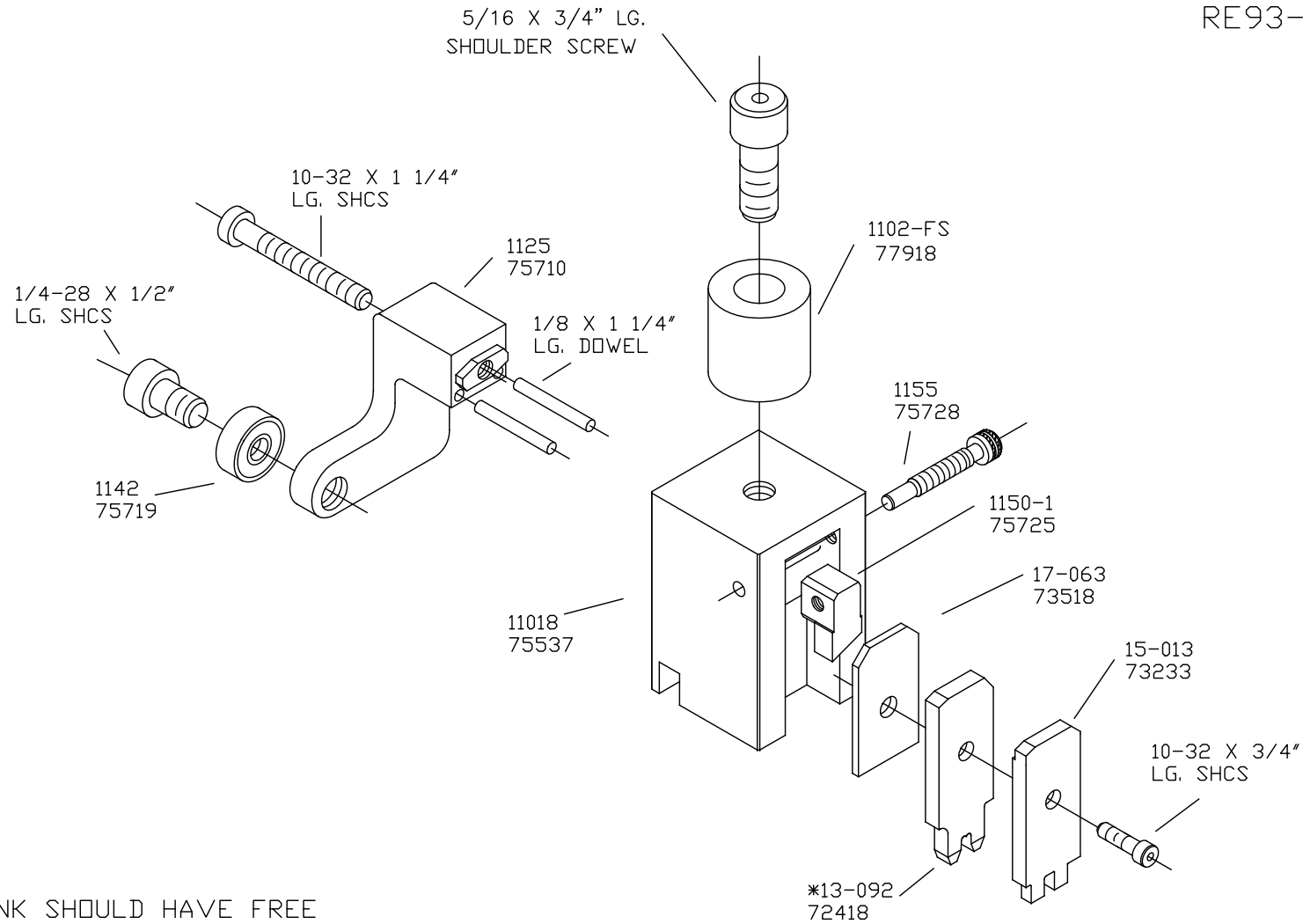
REFERENCE LIST:  
 RE93-2  
 ECC APPLICATOR  
 BILL OF MATERIAL NUMBER  
 79639

**WARNING !**  
**NEVER OPERATE**  
**THIS OR ANY**  
**APPLICATOR**  
**WITHOUT SAFETY**  
**GUARD IN POSITION.**

PART CODE	PART NUMBER	QUANTITY	DESCRIPTION
73955	235	N/A	GUIDE SPACER BLOCK
71635	*12-069	(1)	CUT-OFF PUNCH
73519	16-055	(1)	CUT-OFF SPACER
73233	15-013	(1)	CUT-OFF PUNCH DRIVER
73308	21-013	(1)	CUT-OFF PUNCH RETAINER
72418	*13-092	(1)	WIRE ROLLING TOOL
70205	*8-097	(1)	DIE/ANVIL
70141	8-012	(1)	DIE BLANK
76186	1800	(1)	STOCK CHUTE
77725	176-3	(1)	GUARD
73402	GS310	(1)	GUARD SPACER
		(11)	8-32 X 3/8" S.H.C.S.
		(6)	8-32 X 1/2" S.H.C.S.
		(2)	8-32 X 3/4" S.H.C.S.
		(2)	10-32 X 1/2" S.H.C.S.
		(1)	10-32 X 3/4" S.H.C.S.
		(1)	10-32 X 1 1/4" S.H.C.S.
		(2)	1/4-20 X 1/4" S.S.S.
		(1)	1/4-28 X 1/2" S.H.C.S.
		(1)	1/4-28 X 5/8" S.S.S.
		(2)	1/4-20 X 1" S.H.C.S.
		(1)	1/4-28 JAM NUT
		(1)	5/16 X 3/4" SHOULDER SCREW
		(2)	1/8 X 1/2" DOWEL
		(2)	1/8 X 1 1/4" DOWEL
		(2)	1/4 X 1" DOWEL

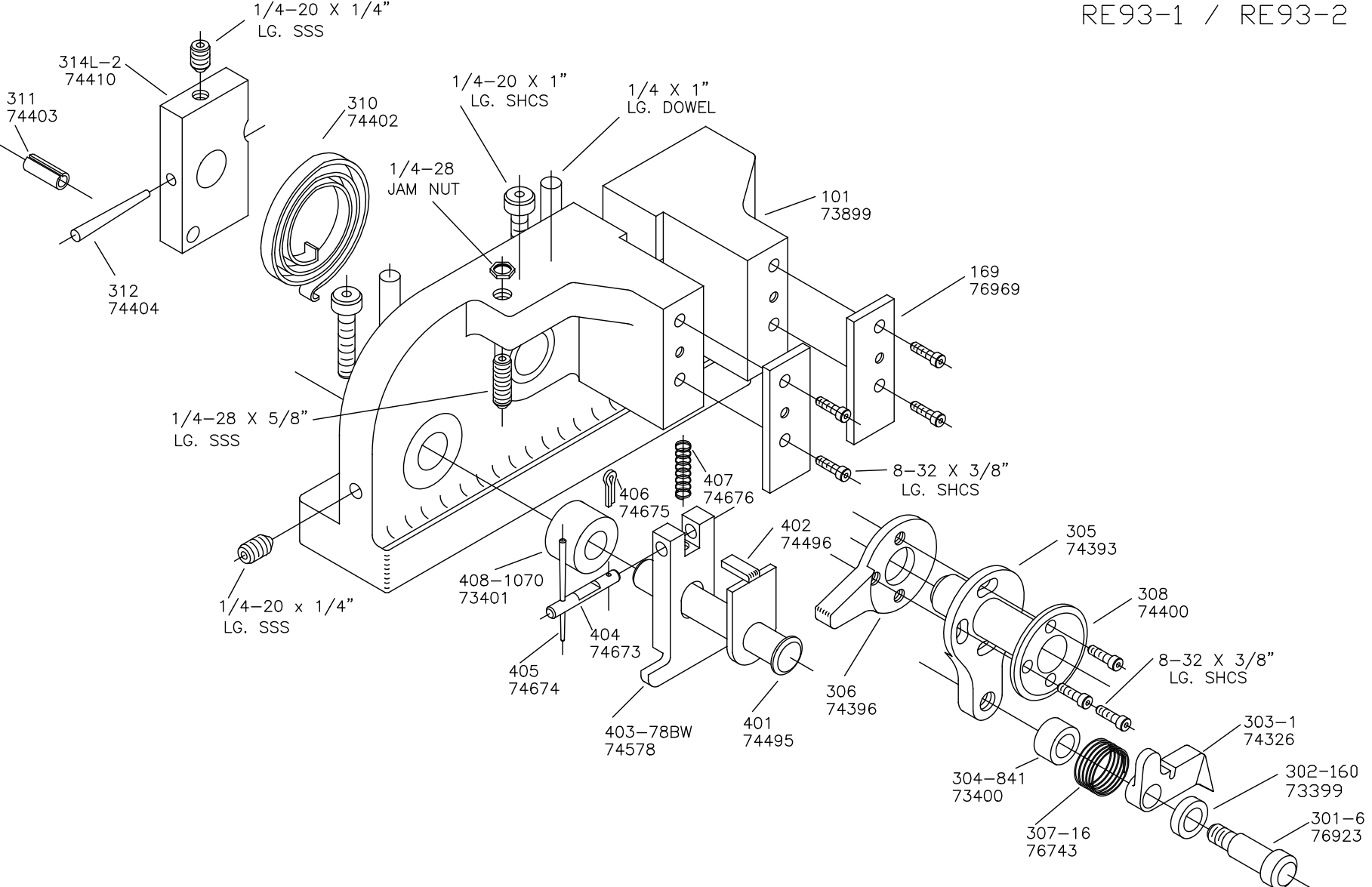
**NOTE: ITEMS MARKED WITH AN \*  
 ARE HIGH WEAR ITEMS**

PLUNGER ASSEMBLY  
SIDE FEED  
RE93-1 / RE93-2

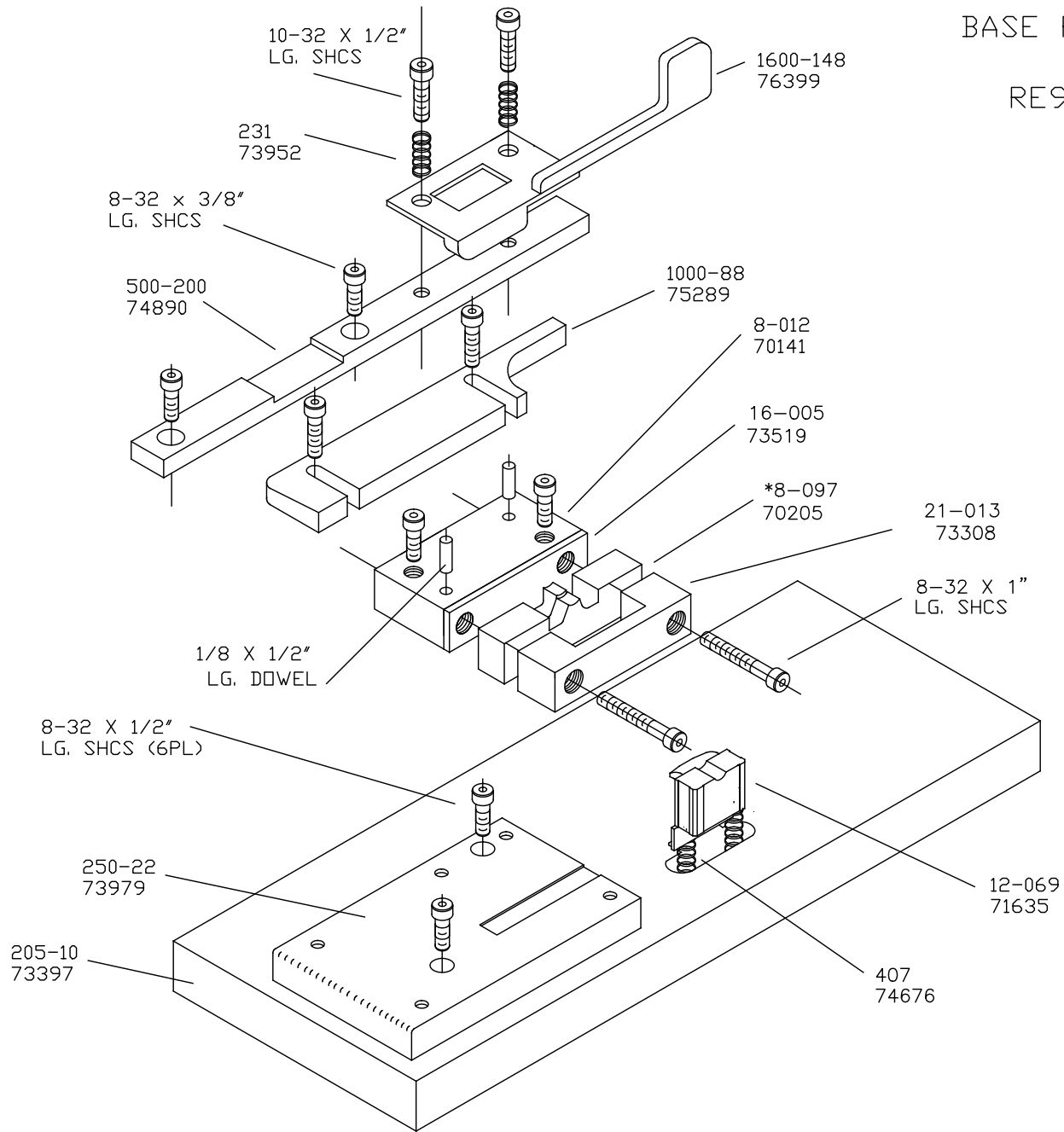


NOTE:  
SHANK SHOULD HAVE FREE  
PLAY IN THE VERTICAL AXIS  
AND SHOULD SPIN FREELY.  
THIS FREE MOTION SERVES  
AS A MISALIGNMENT COUPLING  
BETWEEN PRESS RAM  
AND PLUNGER.

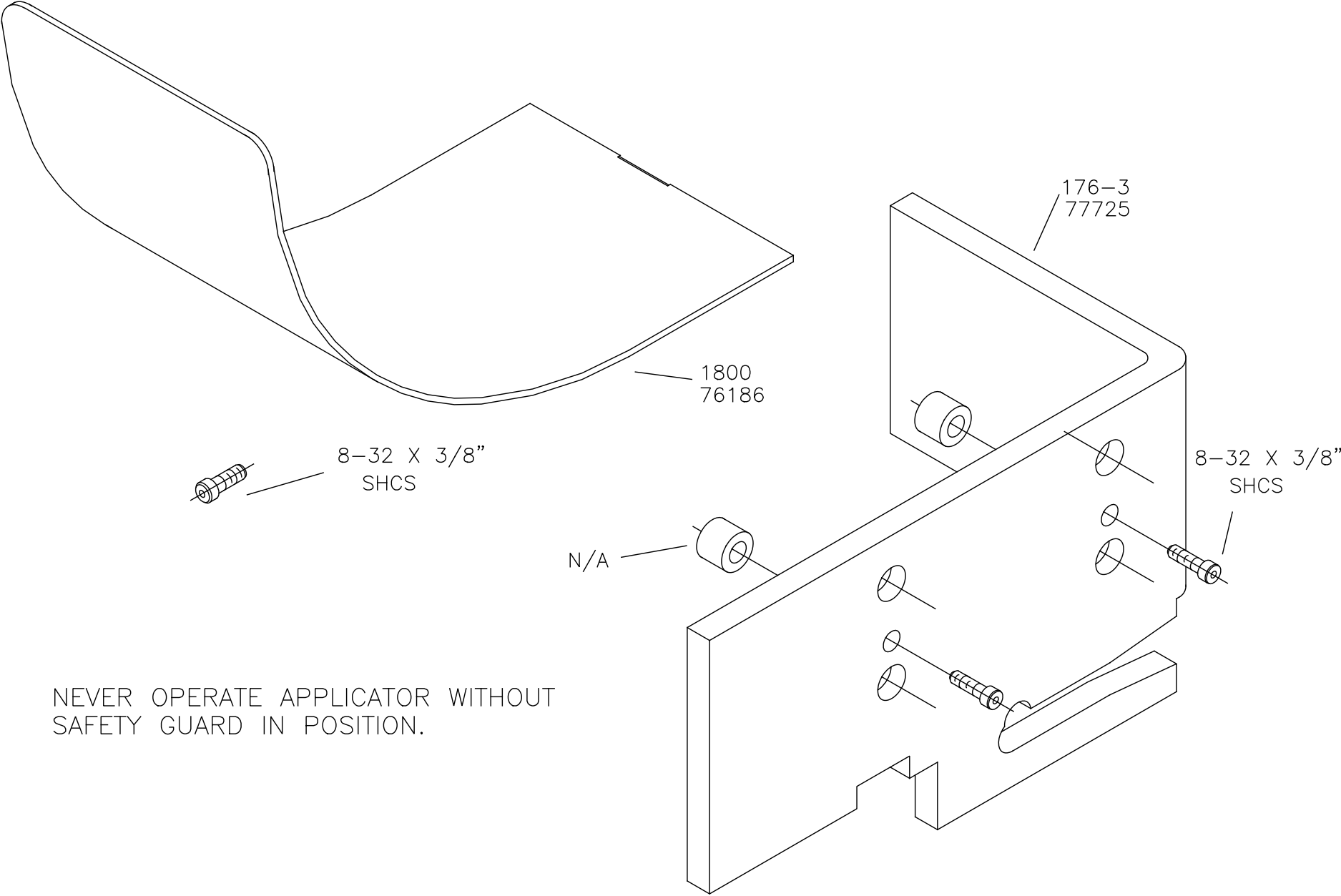
TOP CASTING ASSEMBLY  
SIDE FEED  
RE93-1 / RE93-2



BASE PLATE ASSEMBLY  
SIDE FEED  
RE93-1 / RE93-2



CHUTE AND GUARD  
RE93-1 / RE93-2



NEVER OPERATE APPLICATOR WITHOUT  
SAFETY GUARD IN POSITION.