



REFERENCE LIST:
D275
ECC APPLICATOR
SIDE FEED
BILL OF MATERIAL NUMBER
79642

WARNING !
NEVER OPERATE
THIS OR ANY
APPLICATOR
WITHOUT SAFETY
GUARD IN POSITION.

PART CODE	PART NUMBER	QUANTITY	DESCRIPTION
75495	1100-FS	(1)	PLUNGER
77918	1102-FS	(1)	FLOATING SHANK
		N/A	CUT-OFF SCREW
75728	1155	(1)	ADJUST SCREW
75724	1150	(1)	INSULATION BLOCK
75710	1125	(1)	CAM ROLLER BRACKET
75719	1142	(1)	CAM ROLLER BEARING
71921	*12D-240/260	(1)	CUT-OFF PUNCH
77838	6-047-56	(2)	SPRING
72332	12S-D240/260	(1)	CUT-OFF SPACER
72579	*13-R16-2	(1)	WIRE ROLLING TOOL
		N/A	INSULATION ROLLING TOOL
74410	314L-2	(1)	CAM
74403	311	(1)	SPRING PIN
74404	312	(1)	CAM TAPER PIN
74402	310	(1)	CAM RETURN SPRING
73899	101	(1)	TOP CASTING
76969	169	(2)	UNIVERSAL GIBS
74675	406	(1)	COTTER PIN
74676	407	(1)	BRAKE SPRING
76720	408-.487	(1)	BRAKE BUSHING
74674	405	(1)	TAPER PIN
74673	404	(1)	BRAKE CAM
74509	403-11	(1)	BRAKE BODY
74496	402	(1)	SPRING RETAINER
74495	401	(1)	BRAKE SHAFT
74396	306	(1)	FEED FINGER STOP
74393	305	(1)	FEED FINGER ARM
74400	308	(1)	FEED SHAFT
77837	304-.281	(1)	REAR SPACER
76787	307-4	(1)	FEED TENSION SPRING
70098	7A-D240/260	(1)	FEED FINGER
77836	302-.095	(1)	FRONT SPACER
76858	301-3	(1)	SHOULDER SCREW
73952	231	(2)	STRIPPER SPRING
76009	1627	(1)	WIRE STRIPPER / STOP

**NOTE: ITEMS MARKED WITH AN *
 ARE HIGH WEAR ITEMS**



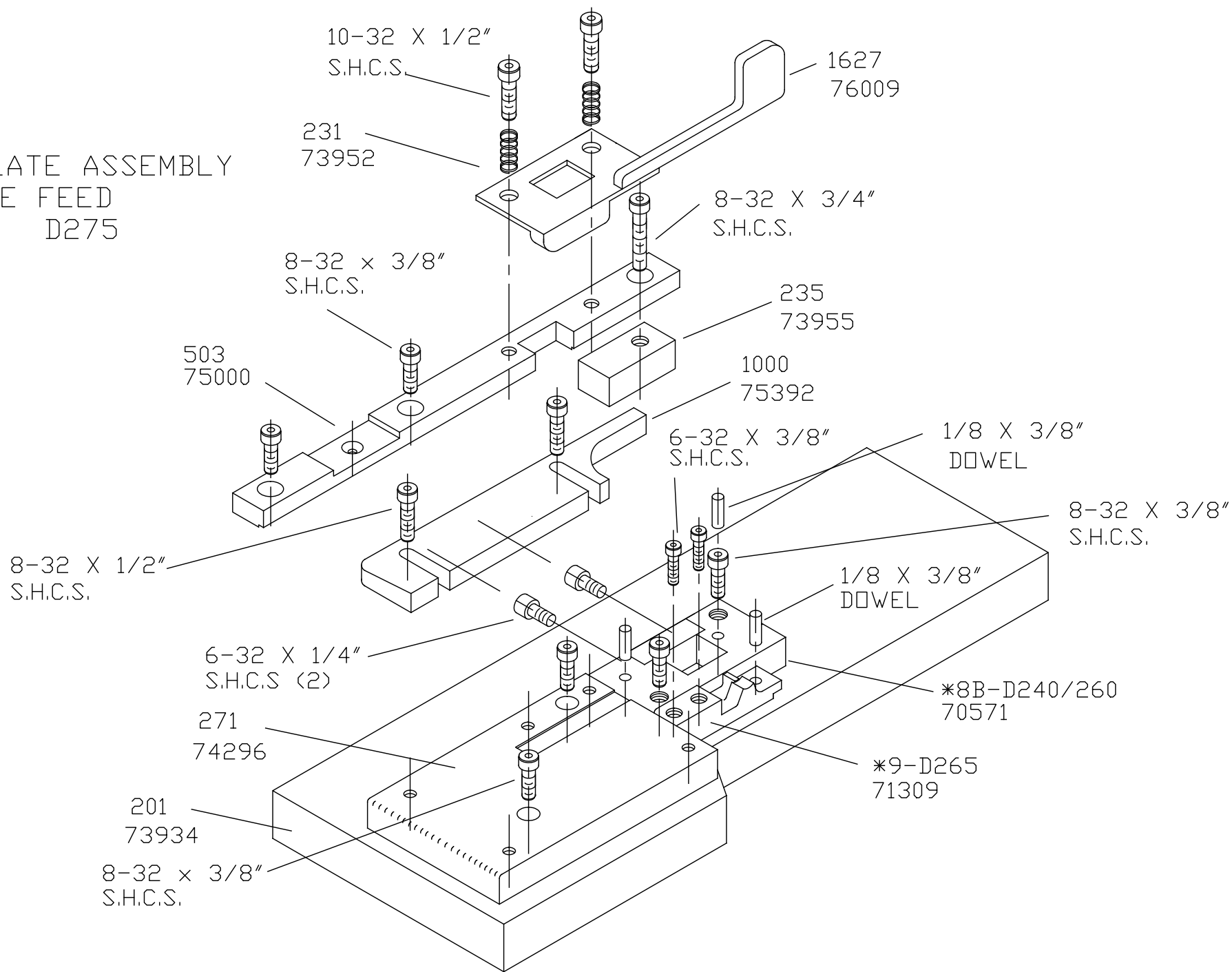
REFERENCE LIST:
D275
ECC APPLICATOR
SIDE FEED
BILL OF MATERIAL NUMBER
79642

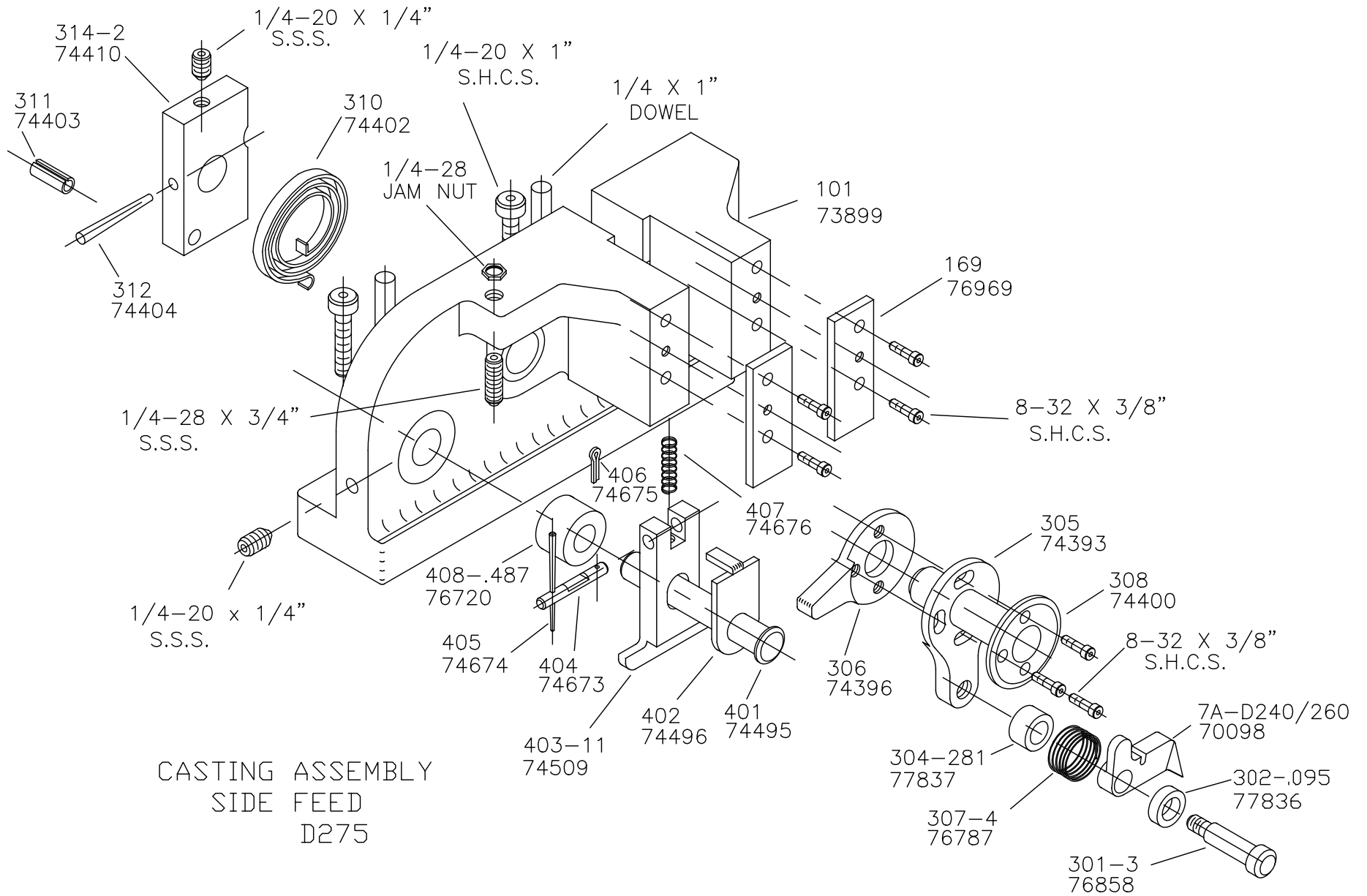
WARNING !
NEVER OPERATE
THIS OR ANY
APPLICATOR
WITHOUT SAFETY
GUARD IN POSITION.

PART CODE	PART NUMBER	QUANTITY	DESCRIPTION
73955	235	(1)	GUIDE SPACER BLOCK
75000	503	(1)	REAR / RIGHT GUIDE
75392	1000	(1)	FRONT / LEFT GUIDE
74296	271	(1)	DIE PLATE
73934	201	(1)	BASE PLATE
70571	*8B-D240/260	(1)	DIE
71309	*9-D265	(1)	ANVIL
76186	1800	(1)	STOCK CHUTE
		N/A	GUARD SPACER
73922	176	(1)	GUARD
		(2)	6-32 X 1/4" S.H.C.S.
		(2)	6-32 X 3/8" S.H.C.S.
		(16)	8-32 X 3/8" S.H.C.S.
		(2)	8-32 X 1/2" S.H.C.S.
		(1)	8-32 X 3/4" S.H.C.S.
		(2)	10-32 X 1/2" S.H.C.S.
		(1)	10-32 X 5/8" S.H.C.S.
		(1)	10-32 X 1 1/4" S.H.C.S.
		(2)	1/4-20 X 1/4" S.S.S.
		(1)	1/4-28 X 1/2" S.H.C.S.
		(1)	1/4-28 X 3/4" S.S.S.
		(2)	1/4-20 X 1" S.H.C.S.
		(2)	1/4 X 1" DOWEL
		(1)	1/4-28 JAM NUT
		(3)	1/8 X 3/8" DOWEL
		(2)	1/8 X 1" DOWEL
		(2)	1/4 X 3/8" SHOULDER SCREW
		(1)	5/16 X 3/4" SHOULDER SCREW

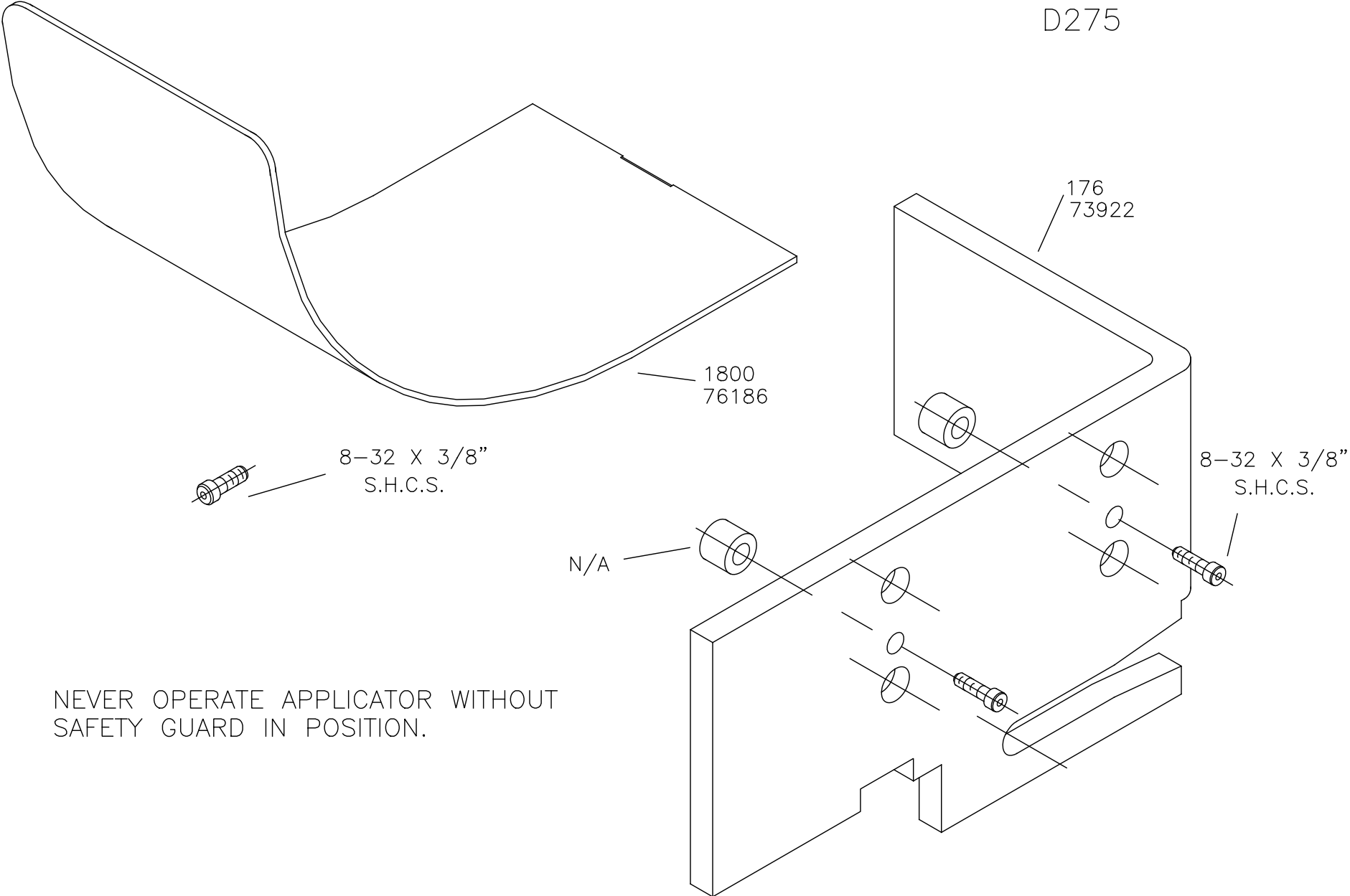
**NOTE: ITEMS MARKED WITH AN *
ARE HIGH WEAR ITEMS**

BASE PLATE ASSEMBLY
SIDE FEED
D275





CHUTE AND GUARD
D275



8-32 X 3/8"
S.H.C.S.

1800
76186

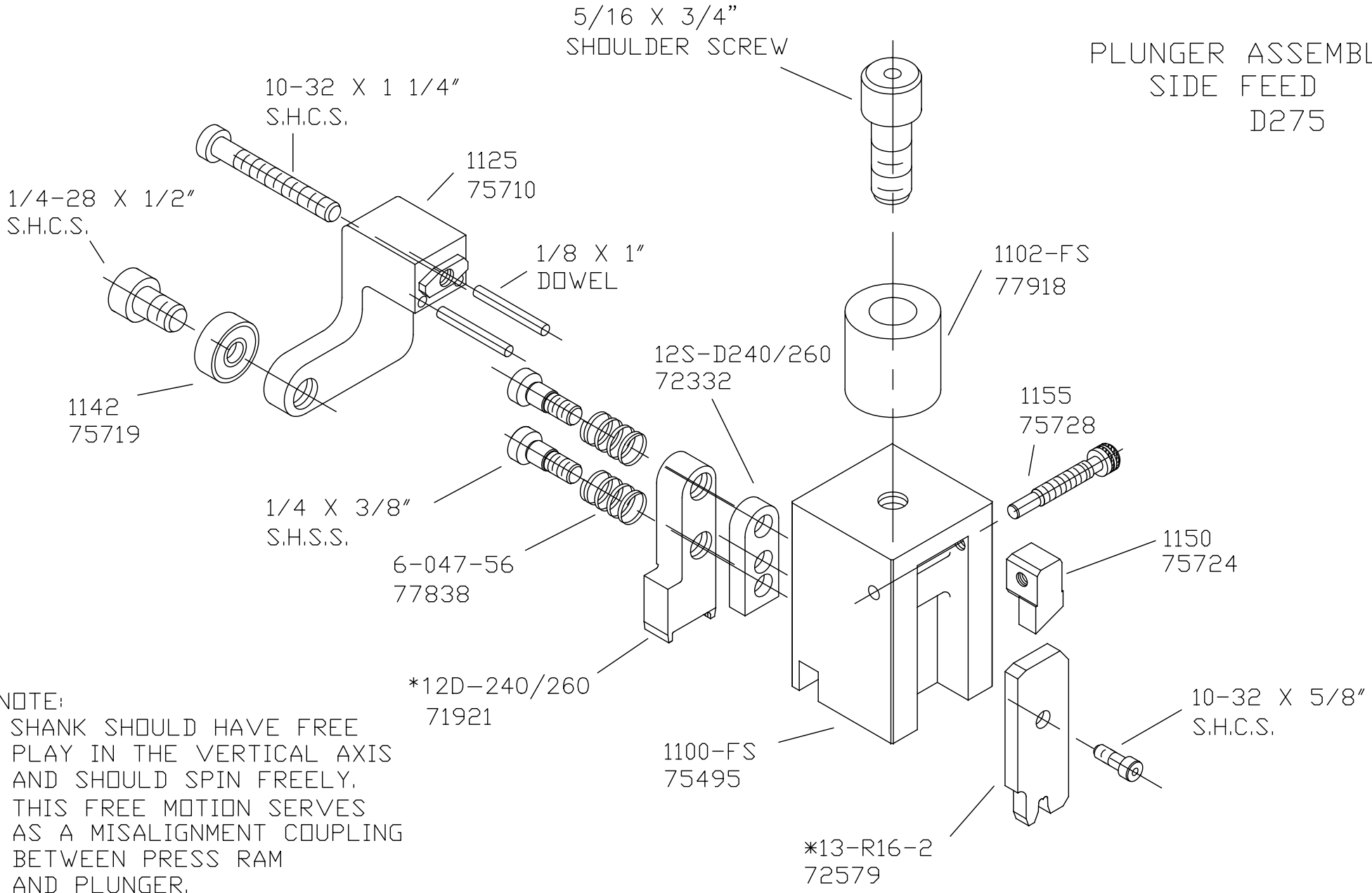
176
73922

8-32 X 3/8"
S.H.C.S.

N/A

NEVER OPERATE APPLICATOR WITHOUT
SAFETY GUARD IN POSITION.

PLUNGER ASSEMBLY
SIDE FEED
D275



NOTE:
SHANK SHOULD HAVE FREE
PLAY IN THE VERTICAL AXIS
AND SHOULD SPIN FREELY.
THIS FREE MOTION SERVES
AS A MISALIGNMENT COUPLING
BETWEEN PRESS RAM
AND PLUNGER.