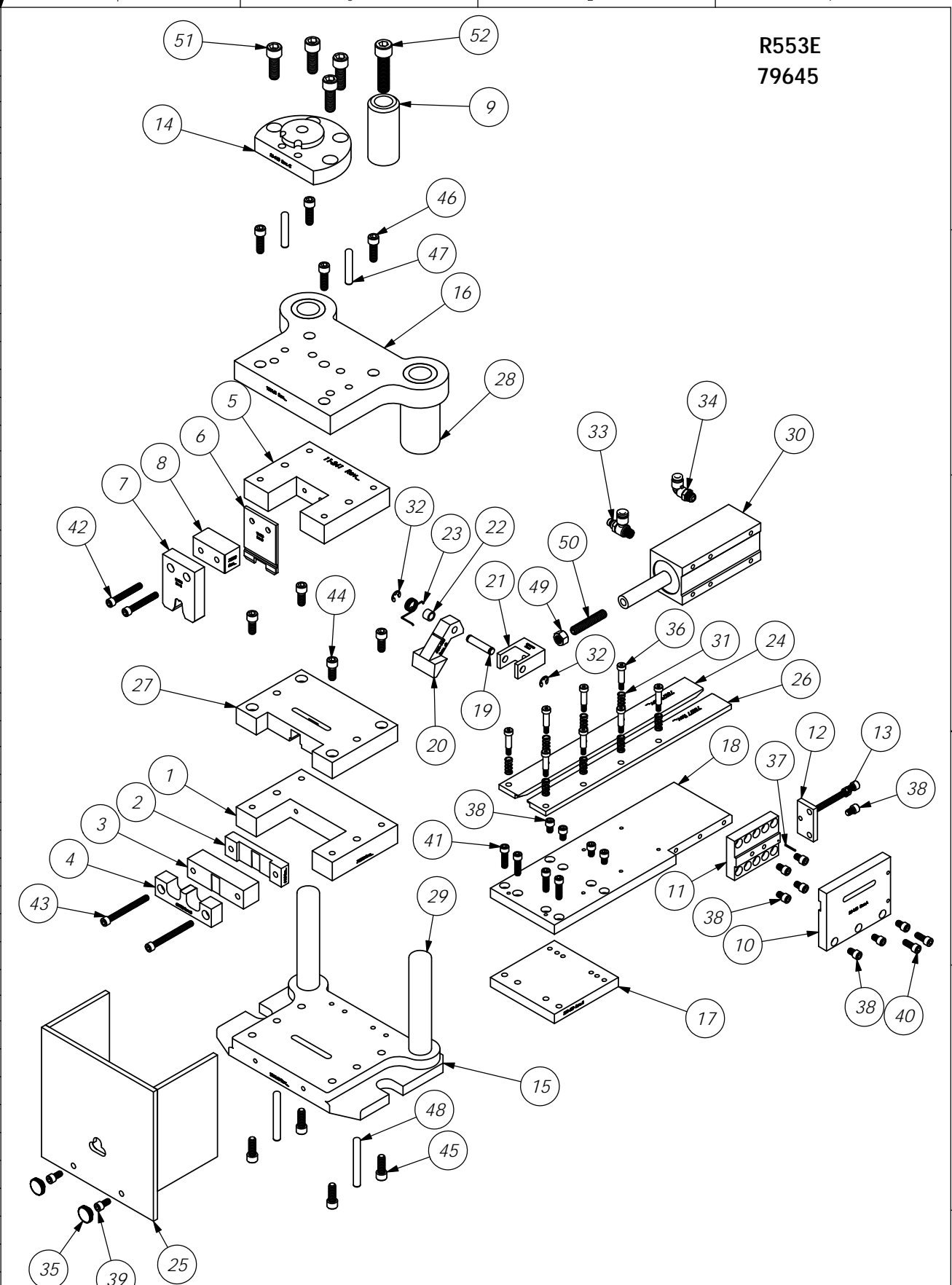


ITEM NO.	Part_Code	PART NUMBER	DESCRIPTION	QTY.
1	75216	8-348	Die Holder	1
2	75217	8-349	Rear Cut-Off Die	1
3	69981	8-350	Front Cut-off Die	1
4	69980	9-325	Conductor Anvil (4-6 AWG)	1
5	75221	11-241	Punch Holder	1
6	69979	12-273	Cut-off Punch	1
7	69978	13-306	Wire Rolling Tool	1
8	75223	16-092	Spacer	1
9	100162	26-R553E	Shank	1
10	75197	26-168	Air Cylinder Support	1
11	62007	26-169-1	Air Cylinder Adjustment Plate	1
12	75199	26-170	Feed Adjust Plate	1
13	69947	26-171	Feed Adjusting Screw	1
14	62346	26-648	Adapter	1
15	100163	30-R553E	Die Set Base	1
16	100161	31-R553E	Die Set Hat	1
17	75196	250-409	Feed Support	1
18	75225	250-410	Feed Plate	1
19	75210	301-10	Feed Pivot Pin	1
20	75206	303-133	Feed Finger	1
21	69968	303A-133	Feed Finger Clevis	1
22	75209	304-.310-1	Feed Finger Spacer	1
23	75211	307-80	Feed Finger Spring	1
24	75879	500-429	Guide Rail	1
25	75887	199-41	Safety Guard	1
26	75877	1000-295	Guide Rail	1
27	75220	1600-298	Stripper	1
28	100167	Dieco BSH-MB8	Dieco Shoulder Bushing or equiv.	2
29	100164	Dieco TN100XP	Dieco Guide Pin or equiv	2
30	62535	Fabco #SQ221 x 3.00 MR-K-C4 (Modified)	Feed Cylinder	1
31	77322	LC-045E-10-M	Spring	8
32	63484	Irving 3100-31	Retaining Ring	2
33	76268	Pisco JSC250-N1AU	Speed Controller	1
34	72352	Pisco PL250-N1U	Ø1/4" x 1/8-NPT Elbow Fitting	1
35	63916	SPI 98-703-B	1/4" Black Knurled Knob	2
36		10-24_1.00sh	#10-24 x 1" Socket Head Shoulder Screw	8
37	63486	1.16_.63rp	1/16" x 5/8" Roll Pin	1
38	71481	1.4-20_.38sh	1/4-20 x 3/8" Socket Hd Cap Screw	13
39	78328	1.4-20_.50sh	1/4-20 x 1/2" Socket Hd Cap Screw	2
40	63492	1.4-20_.63sh	1/4-20 x 5/8" Socket Hd Cap Screw	2
41		1.4-20_.88sh	1/4-20 x 7/8" Socket Hd Cap Screw	4
42		1.4-20_1.75 sh	1/4-20 x 1 3/4" Socket Hd Cap Screw	2
43	63496	1.4-20_2.50sh	1/4-20 x 2 1/2" Socket Hd Cap Screw	2
44		5.16-18_.75sh	5/16-18 x 3/4" Socket Hd Cap Screw	4
45		5.16-18_.88sh	5/16-18 x 7/8" Socket Hd Cap Screw	4
46	63495	5.16-18_1.00sh	5/16-18 x 1" Socket Hd Cap Screw	4
47	63493	5.16_1.75dp	5/16" x 1 3/4" Dowel Pin	2
48		5.16_2.50dp	5/16" x 2 1/2" Dowel Pin	2
49	63485	3.8-24hn	3/8-24 Hex Nut	1
50	63490	3.8-24_2.00ssf	3/8-24 x 2" Soc Set Screw	1
51		7.16-14_1.25sh	7/16-14 x 1 1/4" Socket Hd Cap Screw	4
52		1.2-20_2.00sh	1/2-20 x 2.00 Socket Hd Cap Screw	1



R553E
79645

ITEM NO.		PART No.		DESCRIPTION		MATERIAL SPECIFICATION		QTY. REQ'D	
PARTS LIST									
MATERIAL:				ETCO ENGINEERED PRODUCTS 25 BELLOWS STREET WARWICK RI 02888 (401)-467-2400					
See Parts List				R553E - DSA Rear Feed Applicator					
HEAT TREAT:									
FINISH:									
A		Updated Feed Cylinder and Die Set SCJ		7/11/16		1		R553E	
LVL		REVISION		BY/DATE		QTY		USED ON	
						APPLICATION			
DO NOT SCALE DRAWING									
UNLESS OTHERWISE SPECIFIED DIMENSIONS ARE IN INCHES. TOLERANCES ARE:									
FRACTIONS DECIMALS ANGLES									
±1/64 .XX ±.01 ±1/2°									
.XXX ±.001									
.XXXX ±.0002									
SURFACE FINISH: ✓ ALL OVER									
THE INFORMATION CONTAINED WITHIN THIS DRAWING IS THE SOLE PROPERTY OF ETCO. INCORPORATED. ANY REPRODUCTION IN PART OR WHOLE WITHOUT THE WRITTEN PERMISSION OF ETCO INCORPORATED IS PROHIBITED.									
SCALE: 1:4		CAD FILE:		CHECKED BY:		DATE:		DRAWN BY: SCJ	
								DATE: 7/05/16	
								SIZE: C	