



REFERENCE LIST:
LS3, LS5, LS7
ECC APPLICATOR
BILL OF MATERIAL NUMBER
79647

WARNING !
NEVER OPERATE
THIS OR ANY
APPLICATOR
WITHOUT SAFETY
GUARD IN POSITION.

PART CODE	PART NUMBER	QUANTITY	DESCRIPTION
77919	1102-FS-1	(1)	PLUNGER
77918	1102-FS	(1)	FLOATING SHANK
		N/A	CUT-OFF SCREW
		N/A	ADJUST SCREW
		N/A	INSULATION BLOCK
75710	1125	(1)	CAM ROLLER BRACKET
75719	1142	(1)	CAM ROLLER BEARING
74410	314L-2	(1)	CAM
74403	311	(1)	SPRING PIN
74404	312	(1)	CAM TAPER PIN
74402	310	(1)	CAM RETURN SPRING
76283	101-112	(1)	TOP CASTING
73934	201	(1)	BASE PLATE
76969	169	(2)	UNIVERSAL GIBS
74675	406	(1)	COTTER PIN
74676	407	(1)	BRAKE SPRING
74311	408-1210	(1)	BRAKE BUSHING
74674	405	(1)	TAPER PIN
74673	404	(1)	BRAKE CAM
74520	403-22	(1)	BRAKE BODY
74496	402	(1)	SPRING RETAINER
74495	401	(1)	BRAKE SHAFT
74396	306	(1)	FEED FINGER STOP
74393	305	(1)	FEED FINGER ARM
74400	308	(1)	FEED SHAFT
74392	304-750	(1)	REAR SPACER
76861	307-14	(1)	SPRING
76850	7A-LS3	(1)	FEED FINGER
		N/A	FRONT SPACER
76713	301-5	(1)	SHOULDER SCREW
73952	231	(2)	STRIPPER SPRING
76071	1689	(1)	WIRE STRIPPER / STOP
73975	250-18	(1)	DIE PLATE
75098	605	(1)	REAR / RIGHT GUIDE
75419	1026	(1)	FRONT / LEFT GUIDE
74310	235-3	(1)	GUIDE SPACER BLOCK

NOTE: ITEMS MARKED WITH AN *
ARE HIGH WEAR ITEMS



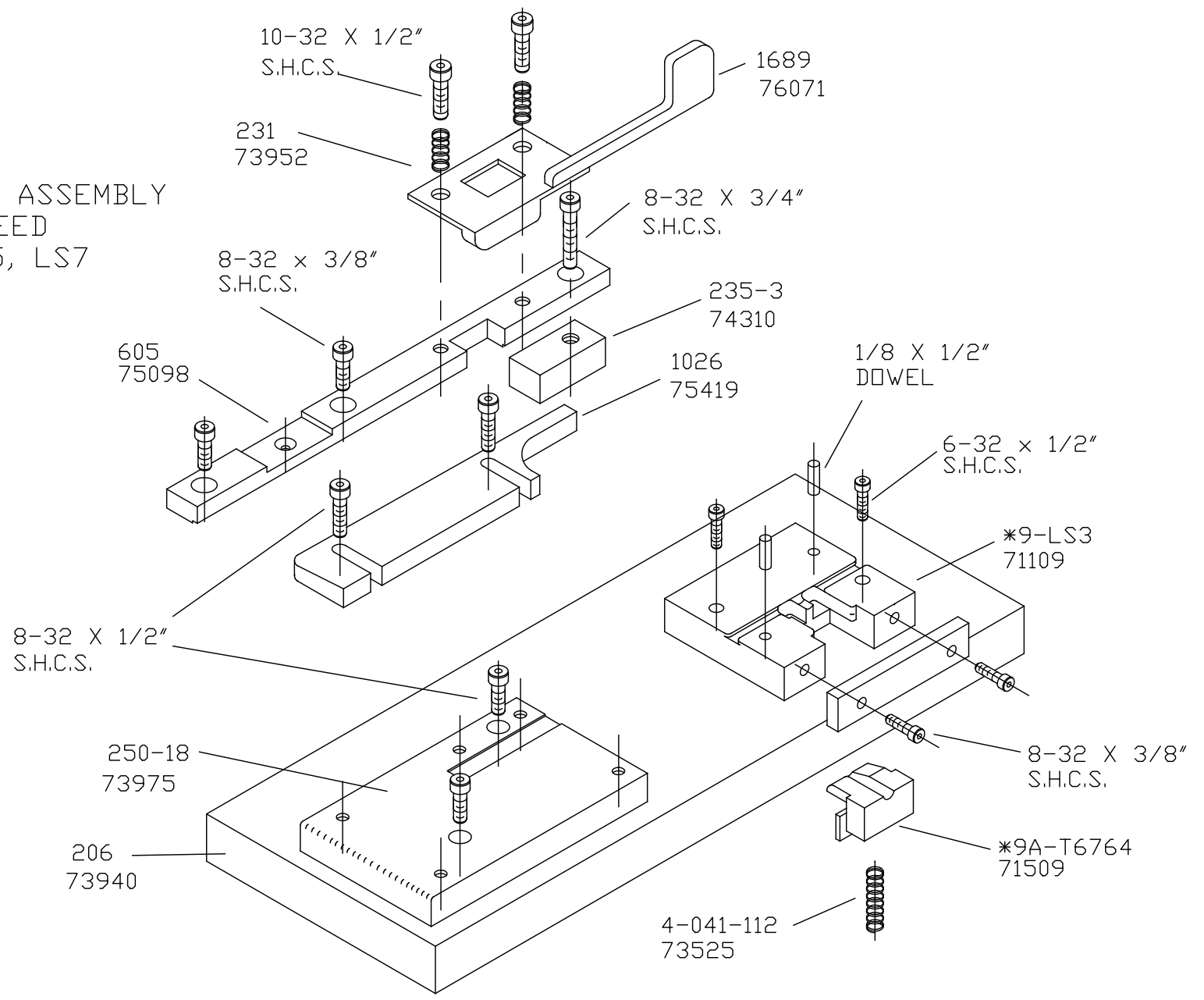
**REFERENCE LIST:
LS3, LS5, LS7
ECC APPLICATOR
BILL OF MATERIAL NUMBER
79647**

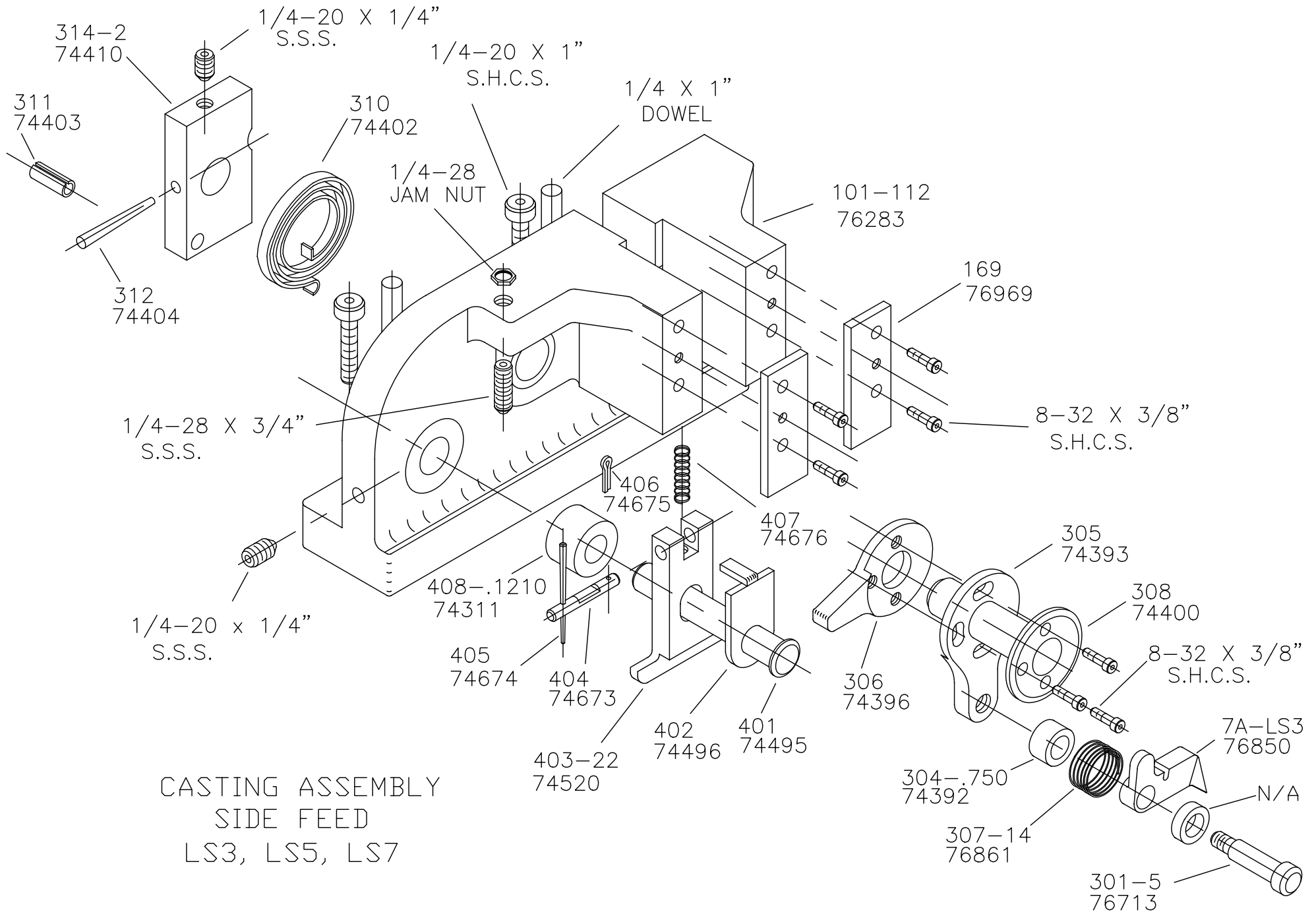
**WARNING !
NEVER OPERATE
THIS OR ANY
APPLICATOR
WITHOUT SAFETY
GUARD IN POSITION.**

PART CODE	PART NUMBER	QUANTITY	DESCRIPTION
71509	*9A-T6764	(1)	CUT-OFF PUNCH
74309	12D-PN109-093A	(1)	CUT-OFF DRIVER
73525	4-041-112	(1)	CUT-OFF SPRING
72552	*13-LS3-1	(1)	WIRE ROLLING TOOL
74308	13S-LS3	(1)	ROLLING TOOL SPACER
73940	206	(1)	DIE
71109	*9-LS3	(1)	ANVIL
76186	1800	(1)	STOCK CHUTE
74312	GS-600	(2)	GUARD SPACER
76282	176-47	(1)	GUARD
		(1)	6-32 X 3/8" S.H.C.S.
		(1)	6-32 X 1/2" S.H.C.S.
		(14)	8-32 X 3/8" S.H.C.S.
		(4)	8-32 X 1/2" S.H.C.S.
		(1)	8-32 X 3/4" S.H.C.S.
		(2)	10-32 X 1/2" S.H.C.S.
		(1)	10-32 X 5/8" F.H.C.S.
		(1)	10-32 X 3/4" S.S.S.
		(1)	10-32 X 1 1/4" S.H.C.S.
		(2)	1/4-20 X 1/4" S.S.S.
		(1)	1/4-28 X 1/2" S.H.C.S.
		(1)	1/4-28 X 3/4" S.S.S.
		(2)	1/4-20 X 1" S.H.C.S.
		(1)	1/4-28 JAM NUT
		(1)	5/16 X 3/4" SHOULDER SCREW
		(1)	1/8 X 1/2" DOWEL
		(2)	1/8 X 1" DOWEL
		(2)	1/4 X 1" DOWEL

**NOTE: ITEMS MARKED WITH AN *
ARE HIGH WEAR ITEMS**

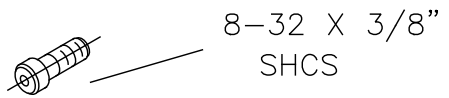
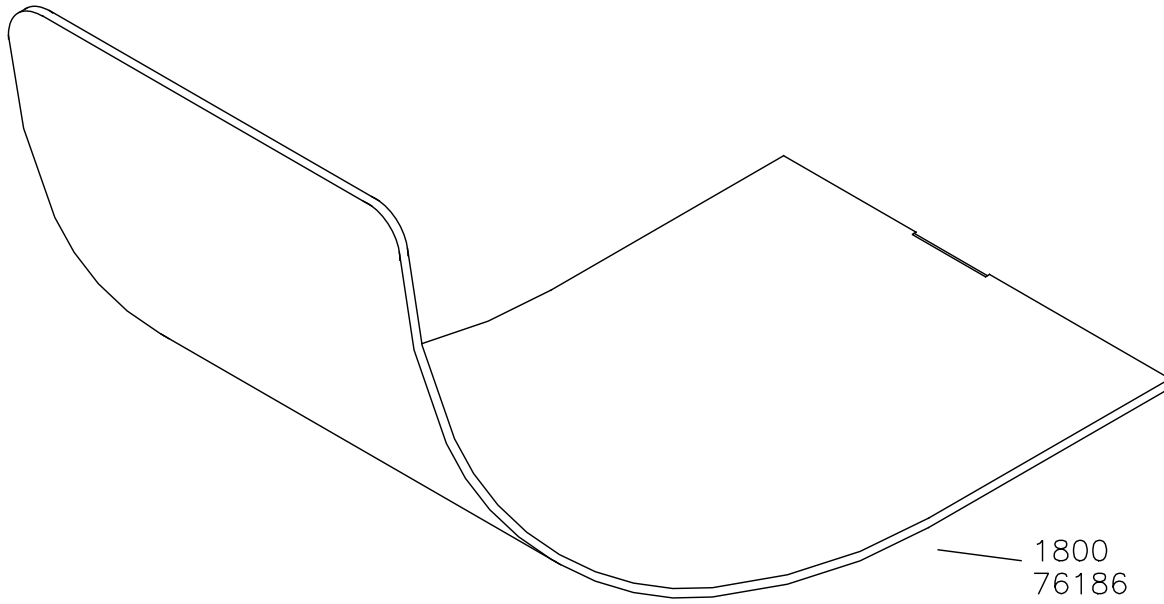
BASE PLATE ASSEMBLY
SIDE FEED
LS3, LS5, LS7



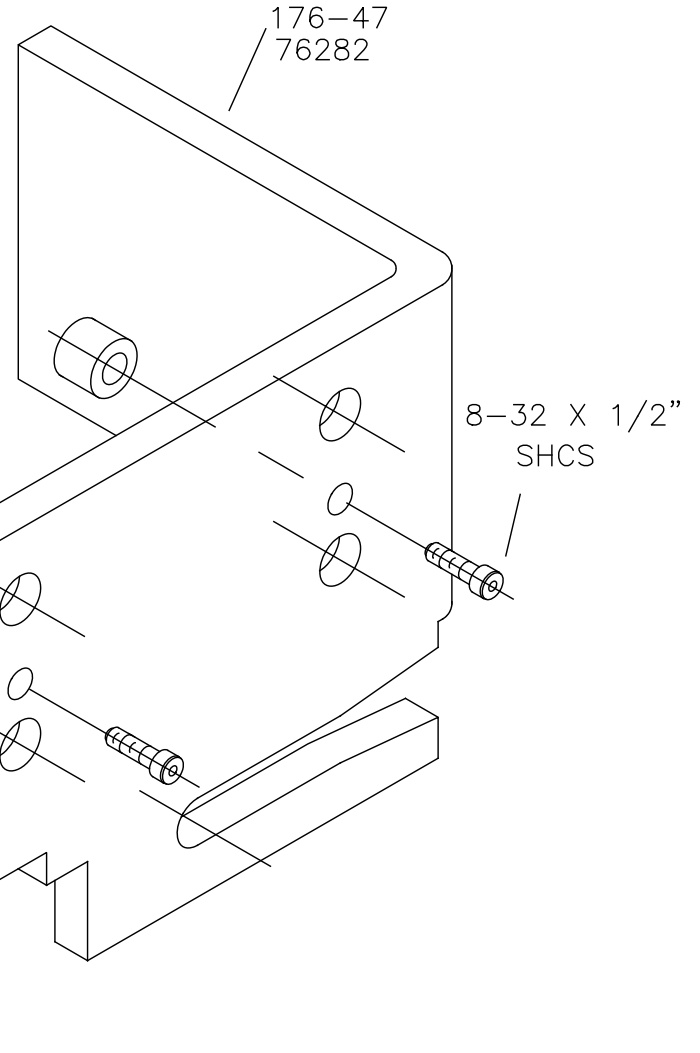
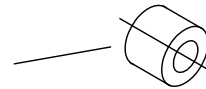


CASTING ASSEMBLY
 SIDE FEED
 LS3, LS5, LS7

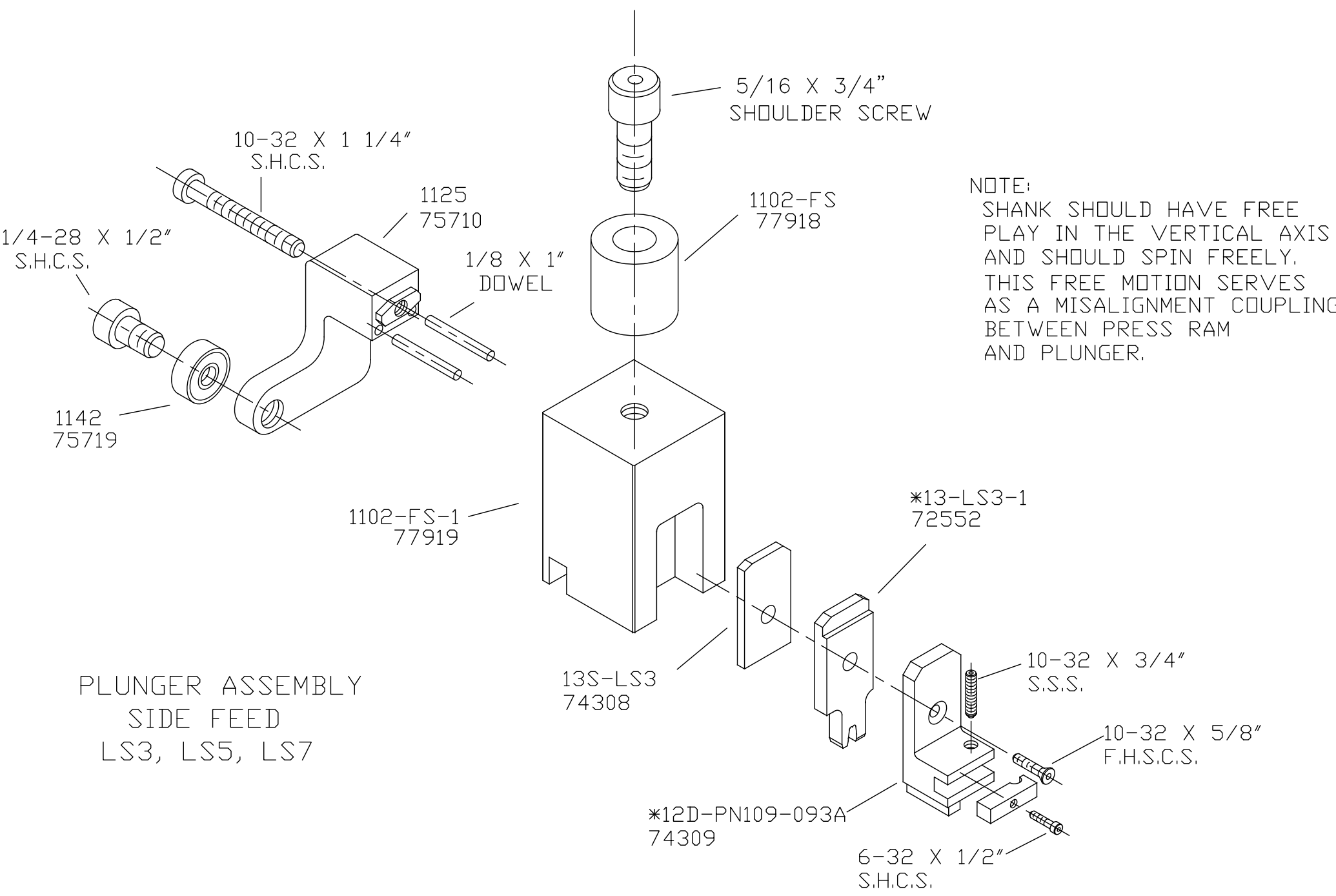
CHUTE AND GUARD LS3, LS5, LS7



GS-.600
74312



NEVER OPERATE APPLICATOR WITHOUT
SAFETY GUARD IN POSITION.



NOTE:
 SHANK SHOULD HAVE FREE
 PLAY IN THE VERTICAL AXIS
 AND SHOULD SPIN FREELY.
 THIS FREE MOTION SERVES
 AS A MISALIGNMENT COUPLING
 BETWEEN PRESS RAM
 AND PLUNGER.

PLUNGER ASSEMBLY
 SIDE FEED
 LS3, LS5, LS7