



REFERENCE LIST:
R178
ECC APPLICATOR
SIDE FEED
 BILL OF MATERIAL NUMBER
79650

WARNING !
NEVER OPERATE
THIS OR ANY
APPLICATOR
WITHOUT SAFETY
GUARD IN POSITION.

PART CODE	PART NUMBER	QUANTITY	DESCRIPTION
75496	1101	(1)	PLUNGER
77918	1102-FS	(1)	FLOATING SHANK
75729	1156	(1)	CUT-OFF SCREW
75728	1155	(1)	ADJUST SCREW
75724	1150	(1)	INSULATION BLOCK
75710	1125	(1)	CAM ROLLER BRACKET
75719	1142	(1)	CAM ROLLER BEARING
74410	314L-2	(1)	CAM
74403	311	(1)	SPRING PIN
74404	312	(1)	CAM TAPER PIN
74402	310	(1)	CAM RETURN SPRING
73899	101	(1)	TOP CASTING
73934	201	(1)	BASE PLATE
76969	169	(2)	UNIVERSAL GIBS
74675	406	(1)	COTTER PIN
74676	407	(1)	BRAKE SPRING
76032	408-735	(1)	BRAKE BUSHING
74674	405	(1)	TAPER PIN
74673	404	(1)	BRAKE CAM
74498	403-1	(1)	BRAKE BODY
74496	402	(1)	SPRING RETAINER
74495	401	(1)	BRAKE SHAFT
74396	306	(1)	FEED FINGER STOP
74393	305	(1)	FEED FINGER ARM
74400	308	(1)	FEED SHAFT
77285	304-438	(1)	REAR SPACER
76860	307-8	(1)	SPRING
70096	7A-R188	(1)	FEED FINGER
77284	302-062	(1)	FRONT SPACER
76873	301-4	(1)	SHOULDER SCREW
73952	231	(2)	STRIPPER SPRING
76003	1621	(1)	WIRE STRIPPER / STOP
74519	263	(1)	DIE PLATE
76034	520	(1)	REAR GUIDE
75392	1000	(1)	FRONT GUIDE
73955	235	(1)	GUIDE SPACER BLOCK

**NOTE: ITEMS MARKED WITH AN *
 ARE HIGH WEAR ITEMS**

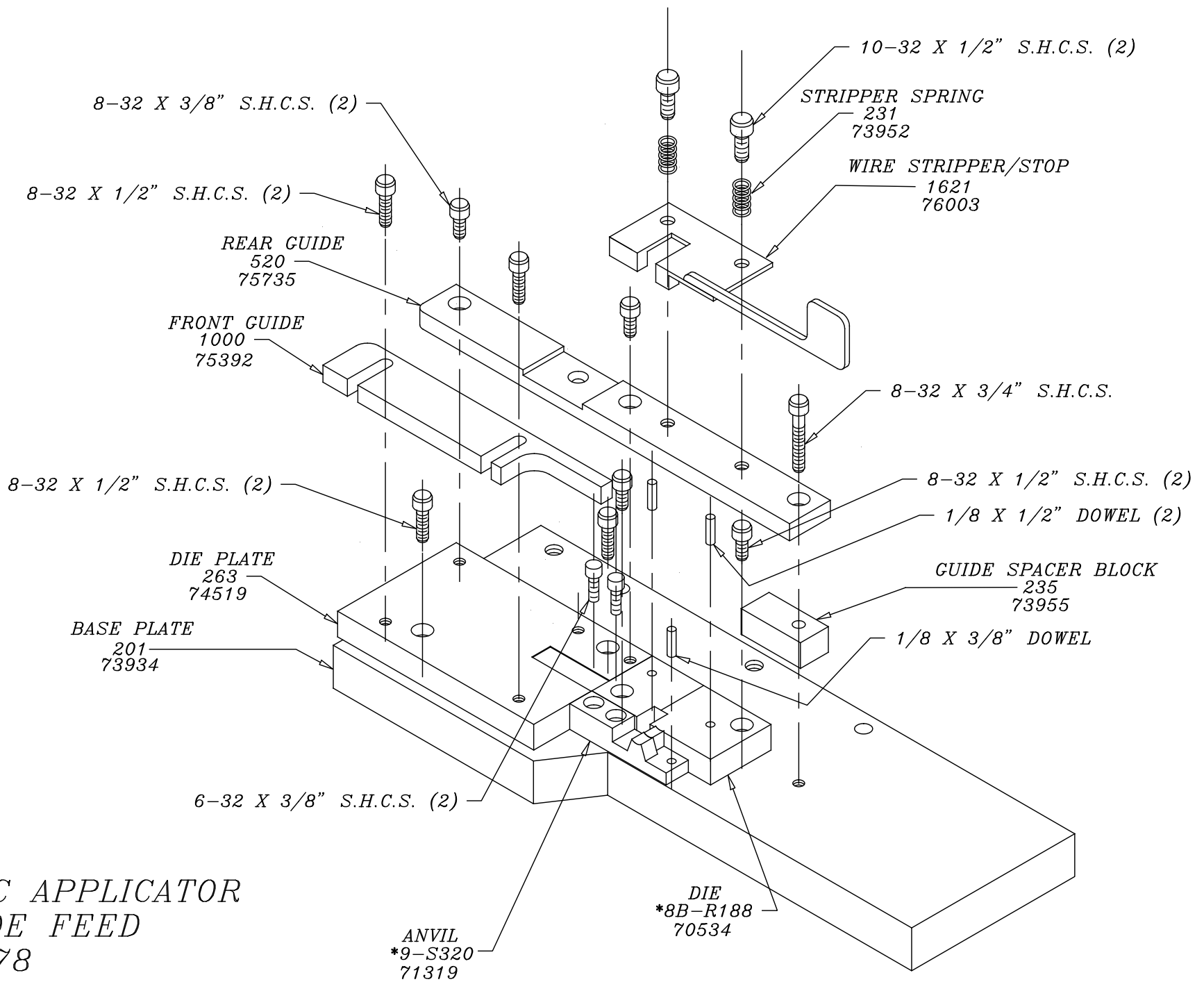


REFERENCE LIST:
R178
ECC APPLICATOR
SIDE FEED
BILL OF MATERIAL NUMBER
79650

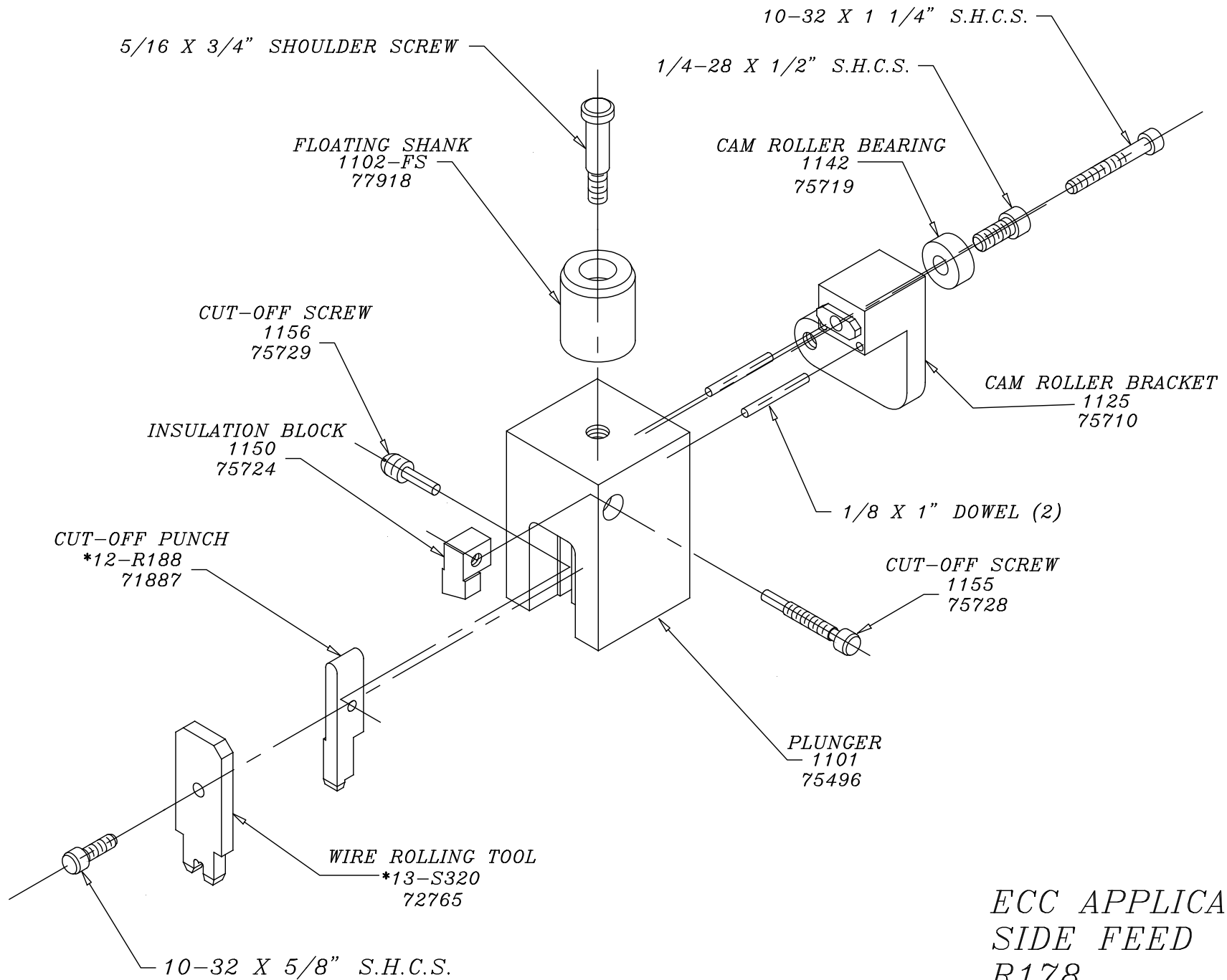
WARNING !
NEVER OPERATE
THIS OR ANY
APPLICATOR
WITHOUT SAFETY
GUARD IN POSITION.

PART CODE	PART NUMBER	QUANTITY	DESCRIPTION
71887	*12-R188	(1)	CUT-OFF PUNCH
72765	*13-S320	(1)	WIRE ROLLING TOOL
		N/A	INSULATION ROLLING TOOL
70534	*8B-R188	(1)	DIE
71319	*9-S320	(1)	ANVIL
73922	176	(1)	GUARD
76186	1800	(1)	STOCK CHUTE
		(2)	6-32 X 3/8" S.H.C.S.
		(16)	8-32 X 3/8" S.H.C.S.
		(2)	8-32 X 1/2" S.H.C.S.
		(1)	8-32 X 3/4" S.H.C.S.
		(1)	10-32 X 3/8" S.H.C.S.
		(2)	10-32 X 1/2" S.H.C.S.
		(1)	10-32 X 1 1/2 S.H.C.S.
		(2)	1/4-20 X 1/4" S.S.S.
		(1)	1/4-28 X 1/2" S.H.C.S.
		(1)	1/4-28 X 3/4" S.S.S.
		(2)	1/4-20 X 1" S.H.C.S.
		(1)	1/4-28 JAM NUT
		(2)	1/4 X 3/8" SHOULDER SCREW
		(1)	5/16 X 3/4" SHOULDER SCREW
		(2)	1/8 X 3/8" DOWEL
		(2)	1/8 X 1" DOWEL
		(2)	1/4 X 1" DOWEL

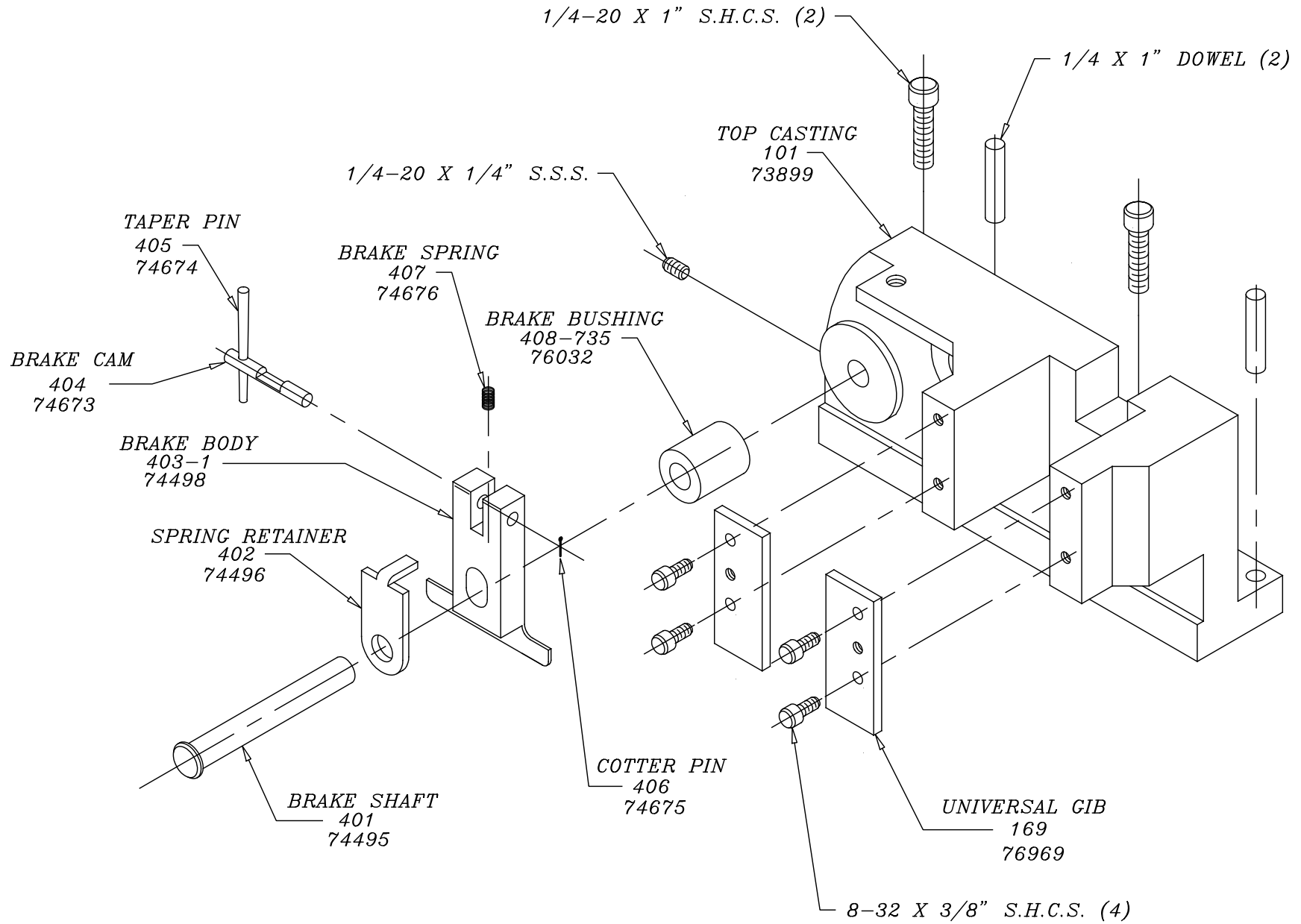
NOTE: ITEMS MARKED WITH AN *
ARE HIGH WEAR ITEMS



ECC APPLICATOR
 SIDE FEED
 R178

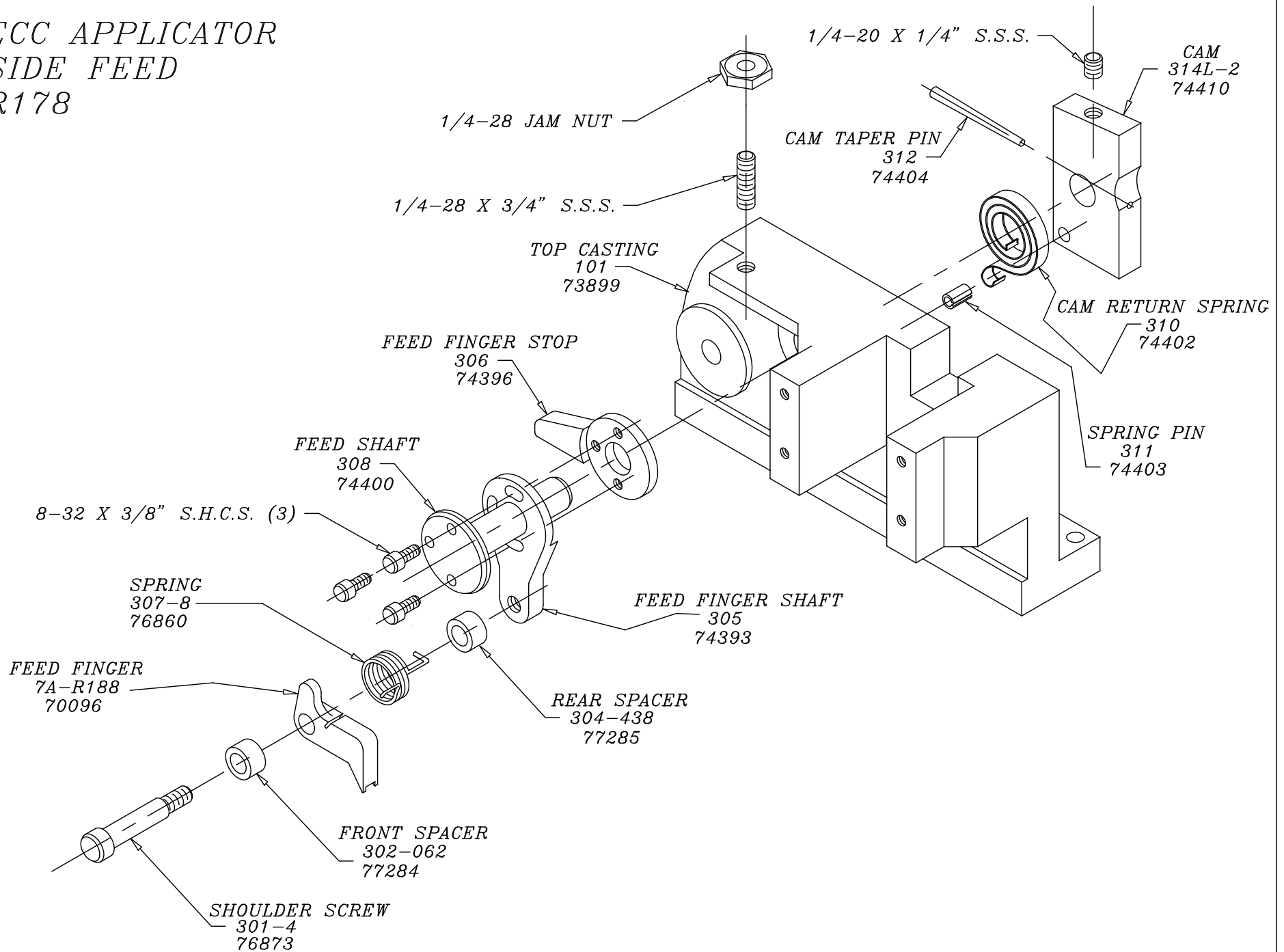


ECC APPLICATOR
SIDE FEED
R178



ECC APPLICATOR
SIDE FEED
R188

*ECC APPLICATOR
SIDE FEED
R178*



*ECC APPLICATOR
SIDE FEED
R178*

8-32 X 3/8" S.H.C.S.

STOCK CHUTE
1800
76186

GUARD
176
73922

8-32 X 3/8" S.H.C.S. (2)

