



**REFERENCE LIST:
LS2
ECC APPLICATOR
BILL OF MATERIAL NUMBER
79652**

**WARNING !
NEVER OPERATE
THIS OR ANY
APPLICATOR
WITHOUT SAFETY
GUARD IN POSITION.**

PART CODE	PART NUMBER	QUANTITY	DESCRIPTION
76001	11029	(1)	PLUNGER
77918	1102-FS	(1)	FLOATING SHANK
		N/A	CUT-OFF SCREW
		N/A	ADJUST SCREW
76004	LS1	(1)	STOCK RETAINER
75710	1125	(1)	CAM ROLLER BRACKET
75719	1142	(1)	CAM ROLLER BEARING
		N/A	SPRING
74410	314L-2	(1)	CAM
74403	311	(1)	SPRING PIN
74404	312	(1)	CAM TAPER PIN
74402	310	(1)	CAM RETURN SPRING
76008	101-80	(1)	TOP CASTING
76012	200-1	(1)	BASE PLATE
76005	LS2	(1)	GIB
74675	406	(1)	COTTER PIN
74676	407	(1)	BRAKE SPRING
74582	408-890	(1)	BRAKE BUSHING
74674	405	(1)	TAPER PIN
74673	404	(1)	BRAKE CAM
76013	403-27	(1)	BRAKE BODY
74496	402	(1)	SPRING RETAINER
74495	401	(1)	BRAKE SHAFT
74396	306	(1)	FEED FINGER STOP
74393	305	(1)	FEED FINGER ARM
74400	308	(1)	FEED SHAFT
76894	304-500	(1)	REAR SPACER
76860	307-8	(1)	SPRING
76014	7A-LS1	(1)	FEED FINGER
		N/A	FRONT SPACER
76874	301-4	(1)	SHOULDER SCREW
		N/A	STRIPPER SPRING
		N/A	WIRE STRIPPER / STOP
74303	250-302	(1)	DIE PLATE
76015	532	(1)	REAR GUIDE
74205	1000-172	(1)	FRONT GUIDE

**NOTE: ITEMS MARKED WITH AN *
ARE HIGH WEAR ITEMS**



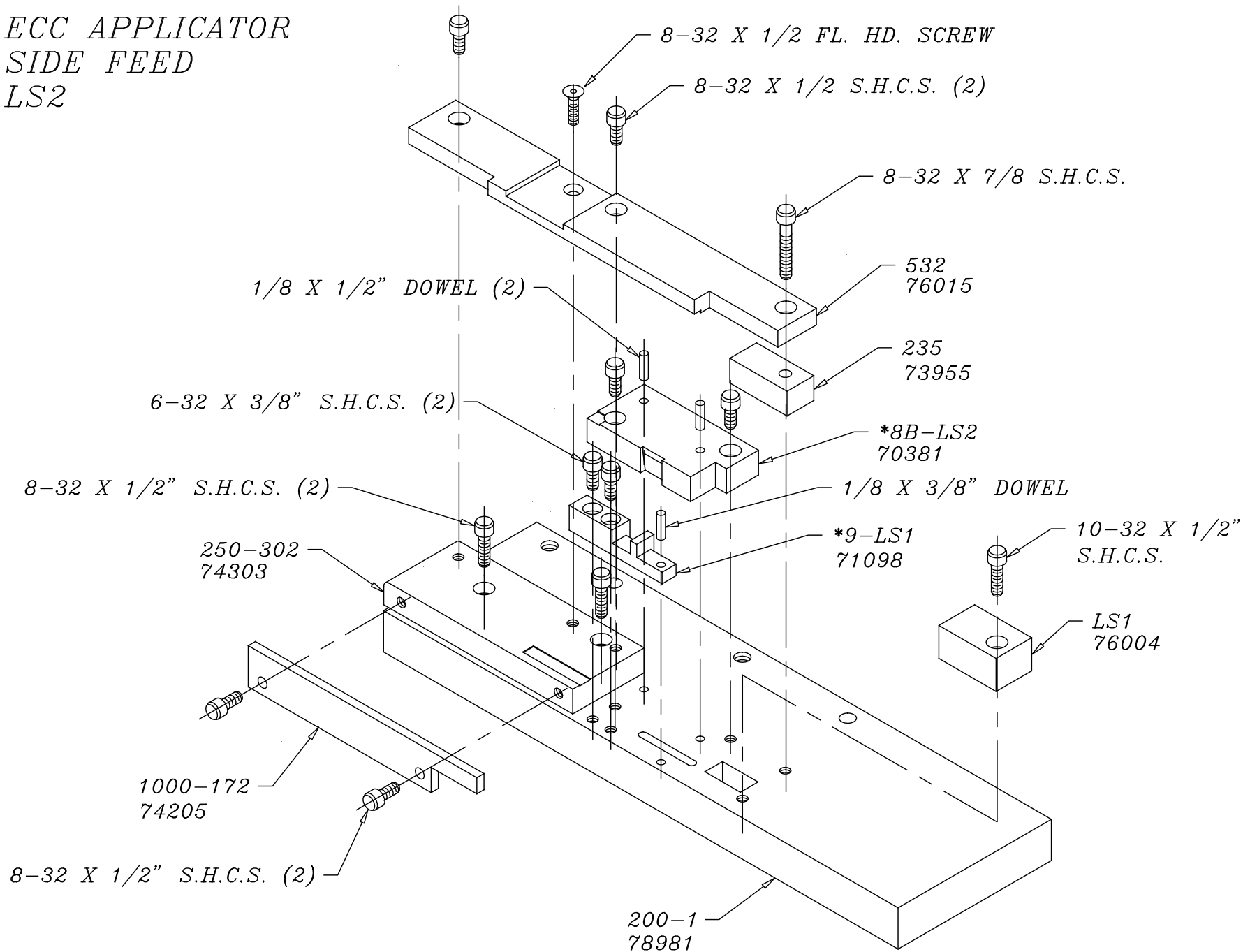
REFERENCE LIST:
LS2
ECC APPLICATOR
BILL OF MATERIAL NUMBER
79652

WARNING !
NEVER OPERATE
THIS OR ANY
APPLICATOR
WITHOUT SAFETY
GUARD IN POSITION.

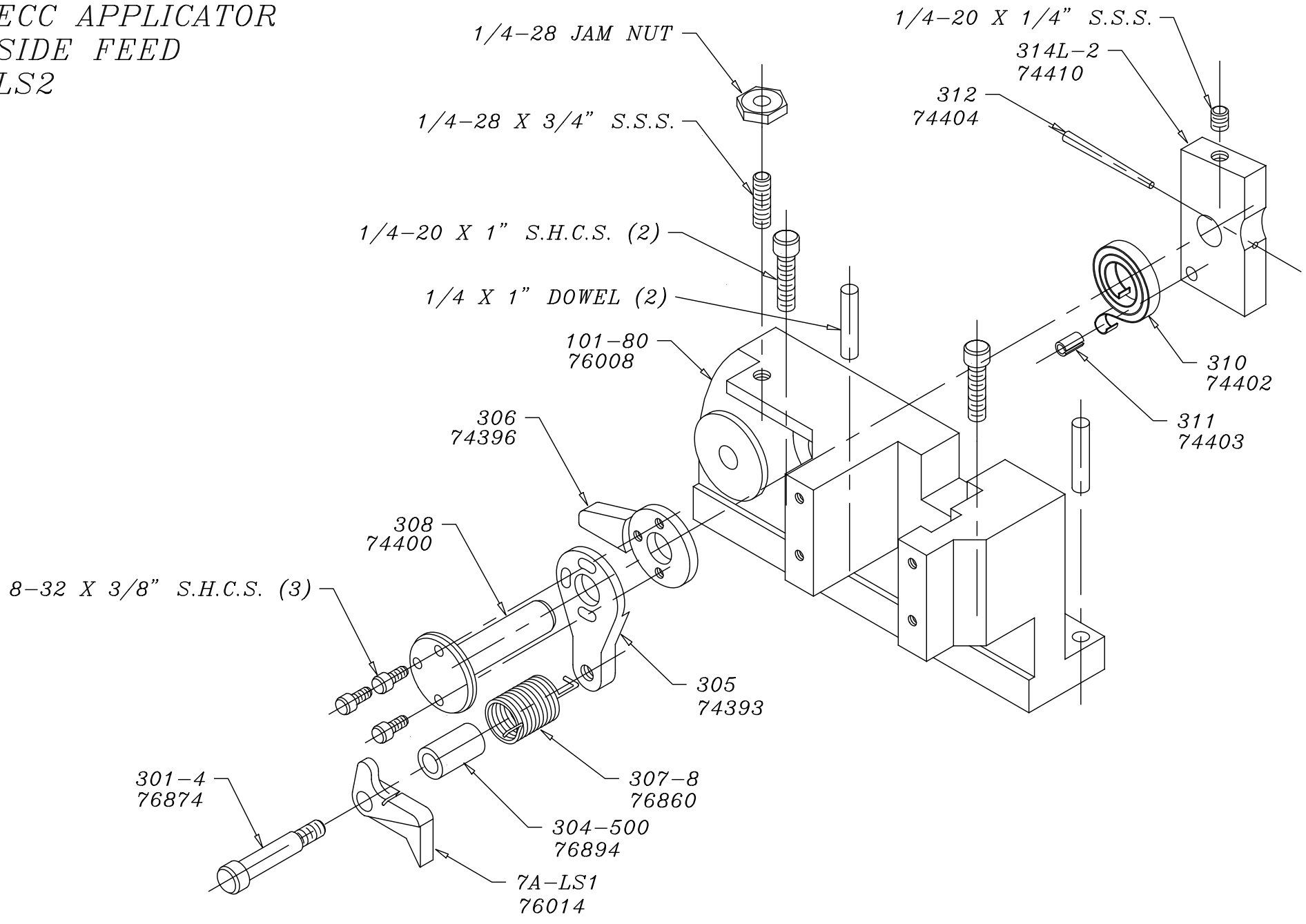
PART CODE	PART NUMBER	QUANTITY	DESCRIPTION
73955	235	(1)	GUIDE SPACER BLOCK
71750	*12-LS2-1	(1)	CUT-OFF PUNCH (FRONT)
72323	*12S-LS1	(1)	CUT-OFF PUNCH (SIDE)
72546	*13-LS2	(1)	WIRE ROLLING TOOL
73033	*14-LS2	(1)	INSULATION ROLLING TOOL
70381	*8B-LS2	(1)	DIE
71098	*9-LS1	(1)	ANVIL
76186	1800	(1)	STOCK CHUTE
		N/A	GUARD SPACER
76016	176-19	(1)	GUARD
		(2)	6-32 X 3/8" FL. HD. SCREW
		(2)	6-32 X 3/8" S.H.C.S.
		(10)	8-32 X 3/8" S.H.C.S.
		(6)	8-32 X 1/2" S.H.C.S.
		(1)	8-32 X 1/2" FL. HD. SCREW
		(1)	8-32 X 7/8" S.H.C.S.
		(2)	10-32 X 1/2" S.H.C.S.
		(1)	10-32 X 1 1/4 S.H.C.S.
		(2)	1/4-20 X 1/4" S.S.S.
		(1)	1/4-28 X 1/2" S.H.C.S.
		(1)	1/4-28 X 3/4" S.S.S.
		(2)	1/4-20 X 1" S.H.C.S.
		(1)	1/4-28 JAM NUT
		(1)	5/16 X 3/4" SHOULDER SCREW
		(2)	1/8 X 1/2" DOWEL
		(2)	1/8 X 3/8" DOWEL
		(2)	1/8 X 1" DOWEL
		(2)	1/4 X 1" DOWEL

NOTE: ITEMS MARKED WITH AN *
ARE HIGH WEAR ITEMS

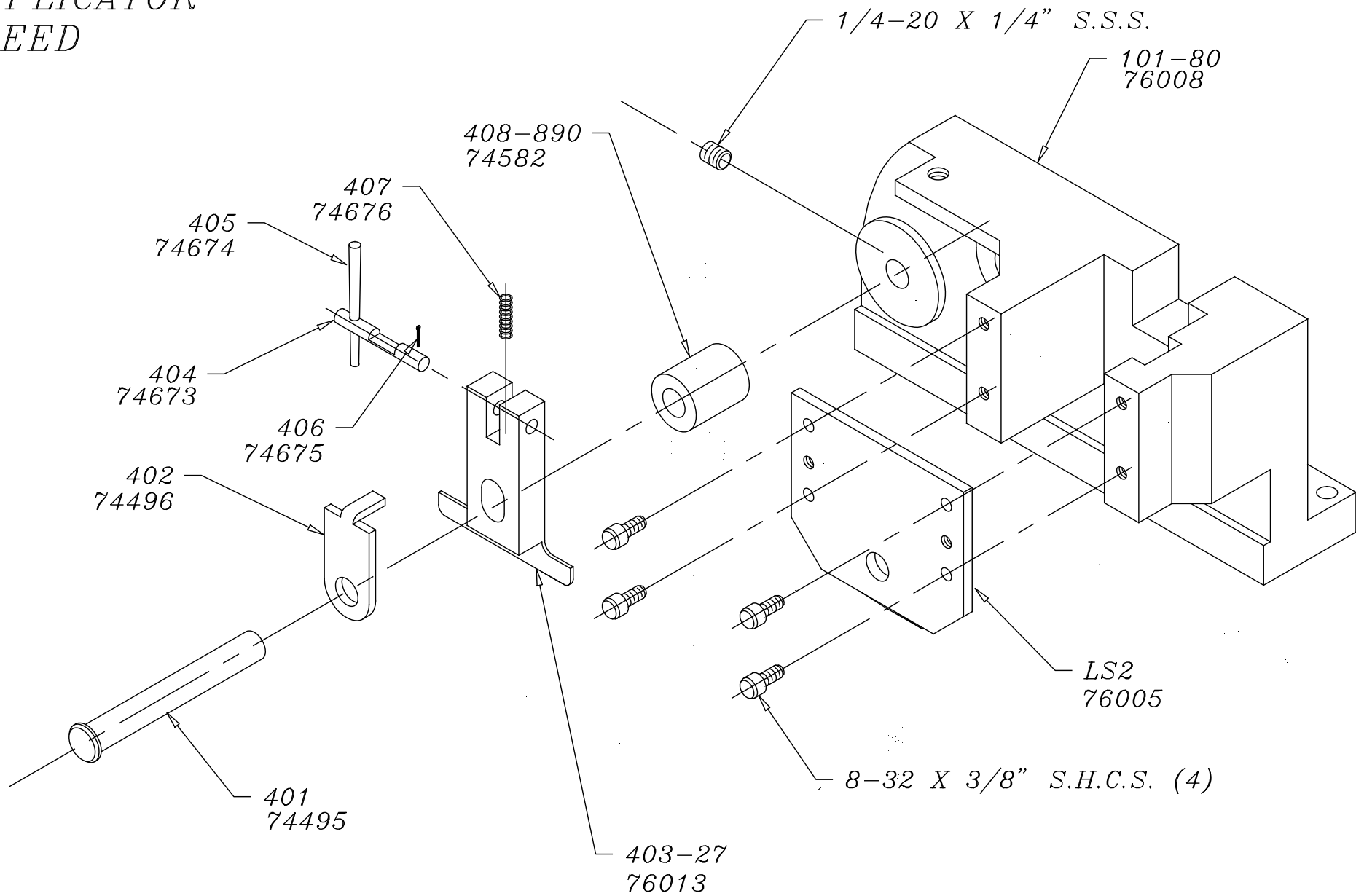
*ECC APPLICATOR
SIDE FEED
LS2*



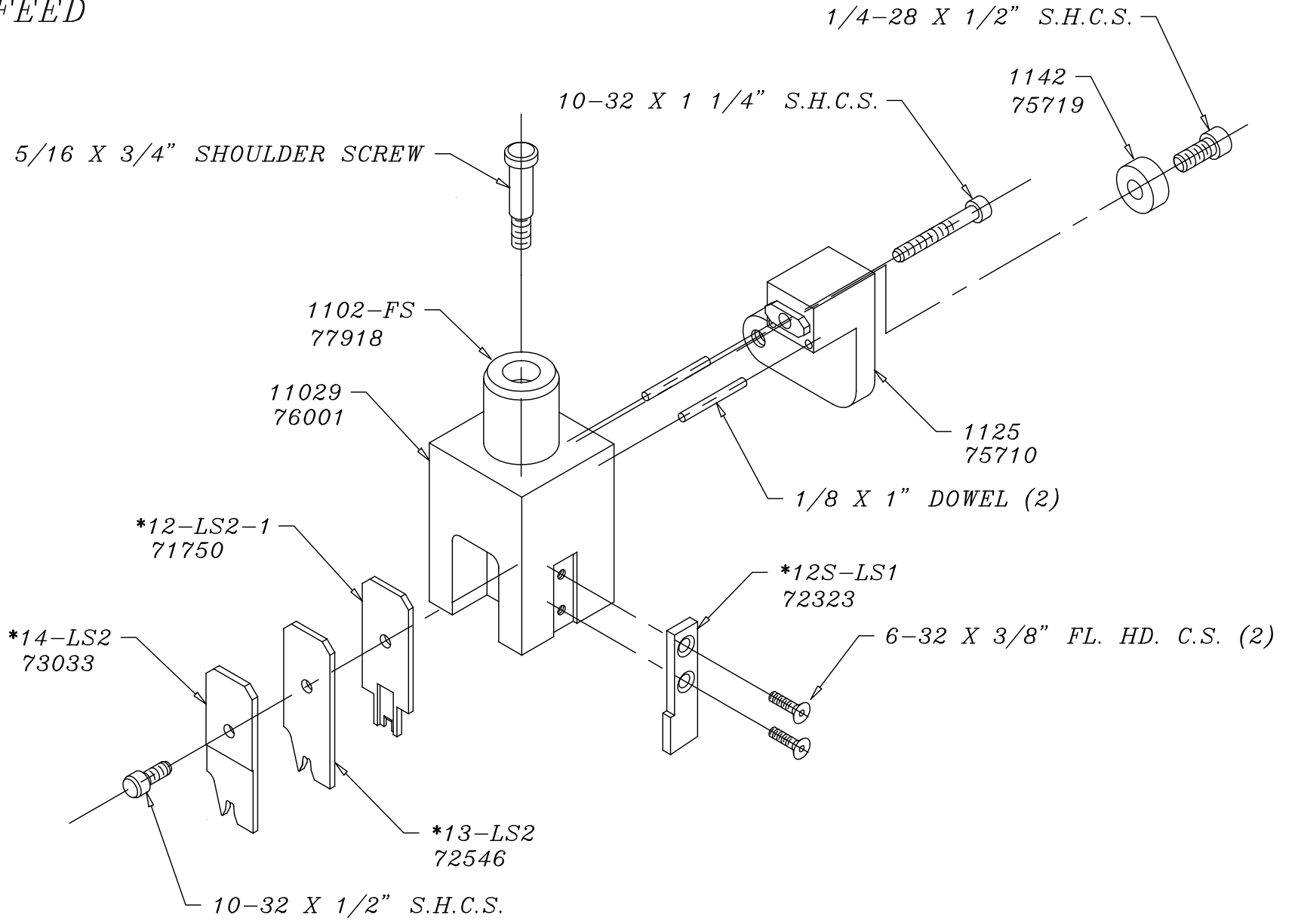
*ECC APPLICATOR
SIDE FEED
LS2*



*ECC APPLICATOR
SIDE FEED
LS2*



*ECC APPLICATOR
SIDE FEED
LS2*



*ECC APPLICATOR
SIDE FEED
LS2*

8-32 X 3/8" S.H.C.S.

1800
76186

176-19
76016

8-32 X 3/8" S.H.C.S. (2)

