



**REFERENCE LIST:
R210, S210
ECC APPLICATOR
SIDE FEED
BILL OF MATERIAL NUMBER
79688**

**WARNING !
NEVER OPERATE
THIS OR ANY
APPLICATOR
WITHOUT SAFETY
GUARD IN POSITION.**

PART CODE	PART NUMBER	QUANTITY	DESCRIPTION
75496	1101-FS	(1)	PLUNGER
77918	1102-FS	(1)	FLOATING SHANK
75729	1156	(1)	CUT-OFF SCREW
75728	1155	(1)	ADJUST SCREW
75724	1150	(1)	INSULATION BLOCK
75710	1125	(1)	CAM ROLLER BRACKET
75719	1142	(1)	CAM ROLLER BEARING
71695	*12-140	(1)	CUT-OFF PUNCH
72749	*13D-240/260	(1)	WIRE ROLLING TOOL
		N/A	INSULATION ROLLING TOOL
74410	314L-2	(1)	CAM
74403	311	(1)	SPRING PIN
74404	312	(1)	CAM TAPER PIN
74402	310	(1)	CAM RETURN SPRING
73899	101	(1)	TOP CASTING
76969	169	(2)	UNIVERSAL GIBS
74675	406	(1)	COTTER PIN
74676	407	(1)	BRAKE SPRING
77286	408-.687	(1)	BRAKE BUSHING
74674	405	(1)	TAPER PIN
74673	404	(1)	BRAKE CAM
74498	403-1	(1)	BRAKE BODY
74496	402	(1)	SPRING RETAINER
74495	401	(1)	BRAKE SHAFT
74396	306	(1)	FEED FINGER STOP
74393	305	(1)	FEED FINGER ARM
74400	308	(1)	FEED SHAFT
77285	304-.438	(1)	REAR SPACER
76721	307-7	(1)	BRAKE SPRING
75601	7A-R220-A	(1)	FEED FINGER
77284	302-062	(1)	FRONT SPACER
76873	301-4	(1)	SHOULDER SCREW
73952	231	(2)	STRIPPER SPRING
76007	1625	(1)	WIRE STRIPPER / STOP
73955	235	(1)	GUIDE SPACER BLOCK
75010	512	(1)	REAR / RIGHT GUIDE
75392	1000	(1)	FRONT / LEFT GUIDE
74279	254	(1)	DIE PLATE

**NOTE: ITEMS MARKED WITH AN *
ARE HIGH WEAR ITEMS**

9/13/2017



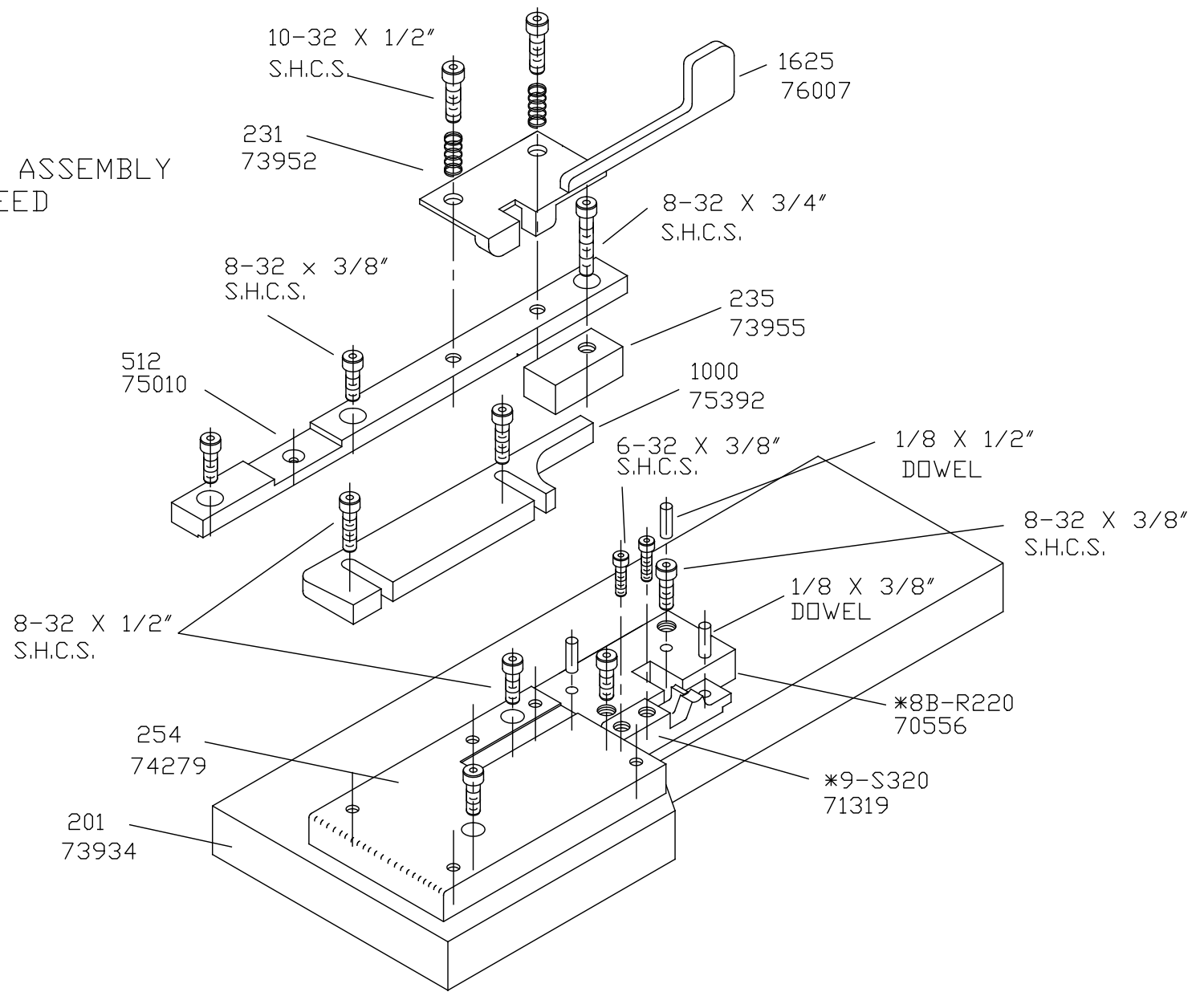
REFERENCE LIST:
R210, S210
ECC APPLICATOR
SIDE FEED
BILL OF MATERIAL NUMBER
79688

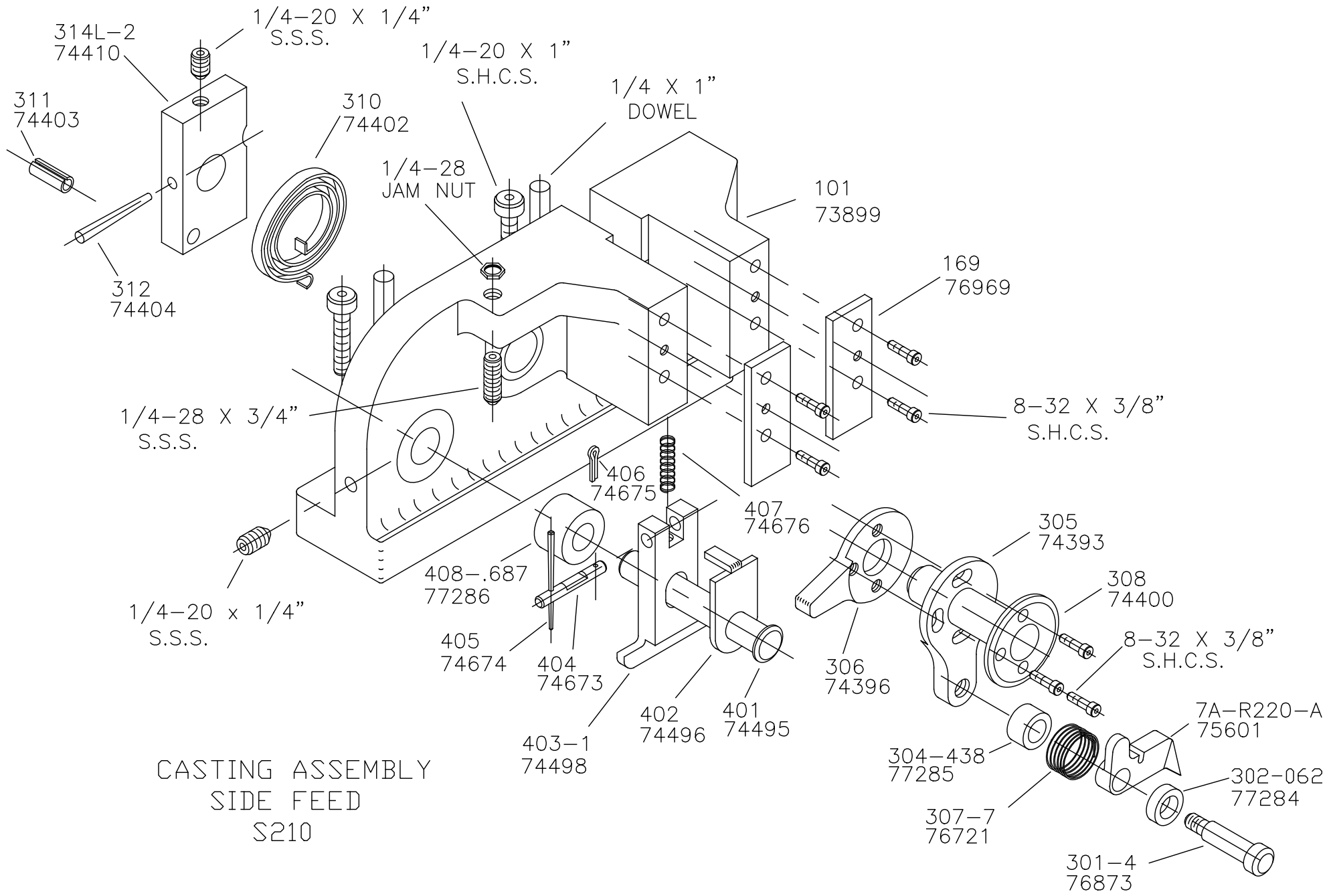
WARNING !
NEVER OPERATE
THIS OR ANY
APPLICATOR
WITHOUT SAFETY
GUARD IN POSITION.

PART CODE	PART NUMBER	QUANTITY	DESCRIPTION
73934	201	(1)	BASE PLATE
70556	*8B-R220	(1)	DIE
71319	*9-S320	(1)	ANVIL
76186	1800	(1)	STOCK CHUTE
		N/A	GUARD SPACER
73922	176	(1)	GUARD
		(1)	10-32 X 1 1/4" S.H.C.S.
		(1)	1/4-28 X 1/2" S.H.C.S.
		(2)	1/8 X 1" DOWEL
		(1)	5/16 X 3/4" SHOULDER SCREW
		(1)	1/4-28 X 3/4" S.S.S.
		(2)	1/4-20 X 1" S.H.C.S.
		(2)	1/4 X 1" DOWEL
		(1)	1/4-28 JAM NUT
		(2)	1/4-20 X 1/4" S.S.S.
		(14)	8-32 X 3/8" S.H.C.S.
		(1)	10-32 X 1/2" S.H.C.S.
		(1)	8-32 X 3/4" S.H.C.S.
		(2)	6-32 X 3/8" S.H.C.S.
		(4)	8-32 X 1/2" S.H.C.S.
		(2)	1/8 X 1/2" DOWEL
		(1)	1/8 X 3/8" DOWEL
		(2)	10-32 X 3/8" S.H.C.S.

NOTE: ITEMS MARKED WITH AN *
ARE HIGH WEAR ITEMS

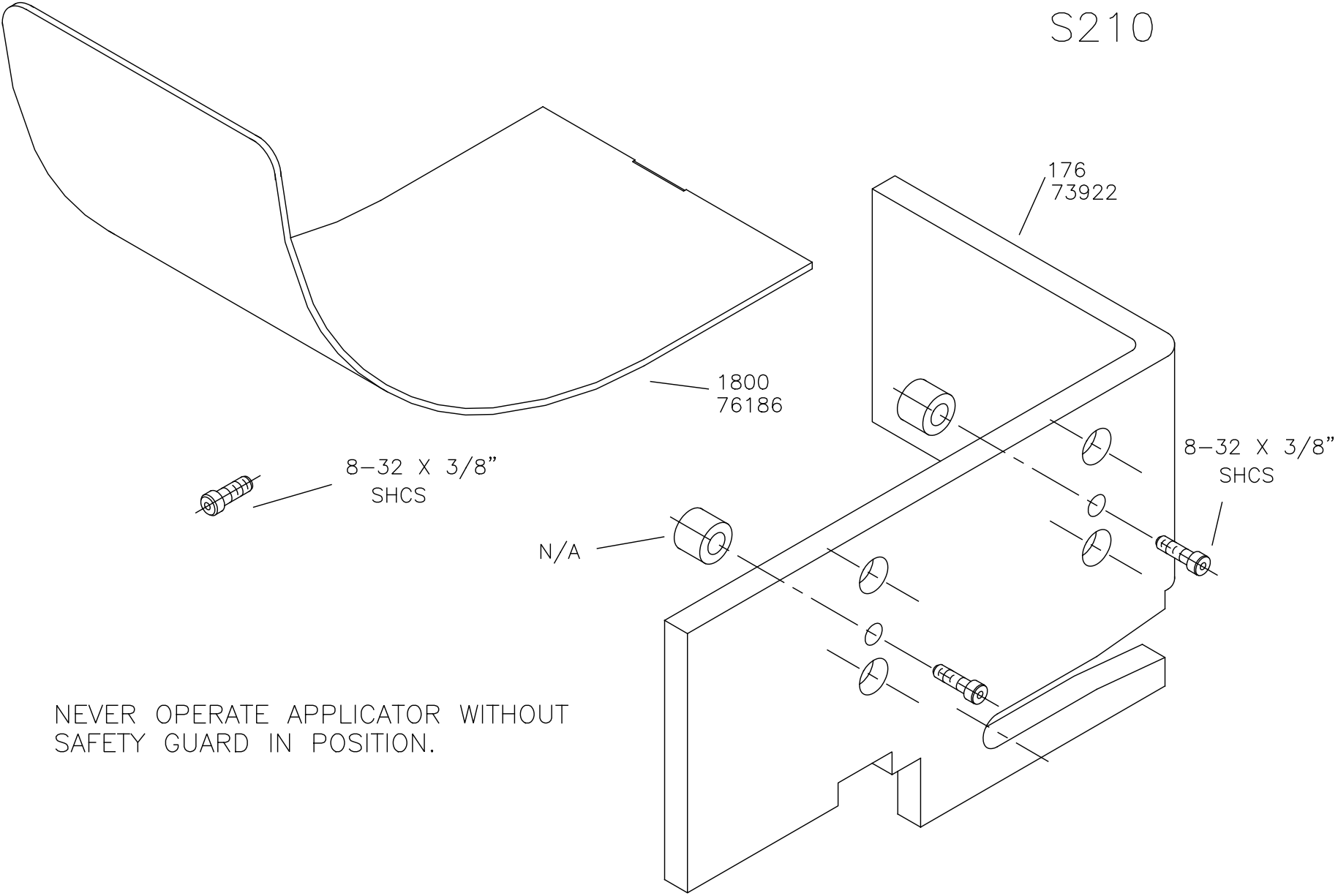
BASE PLATE ASSEMBLY
SIDE FEED
S210



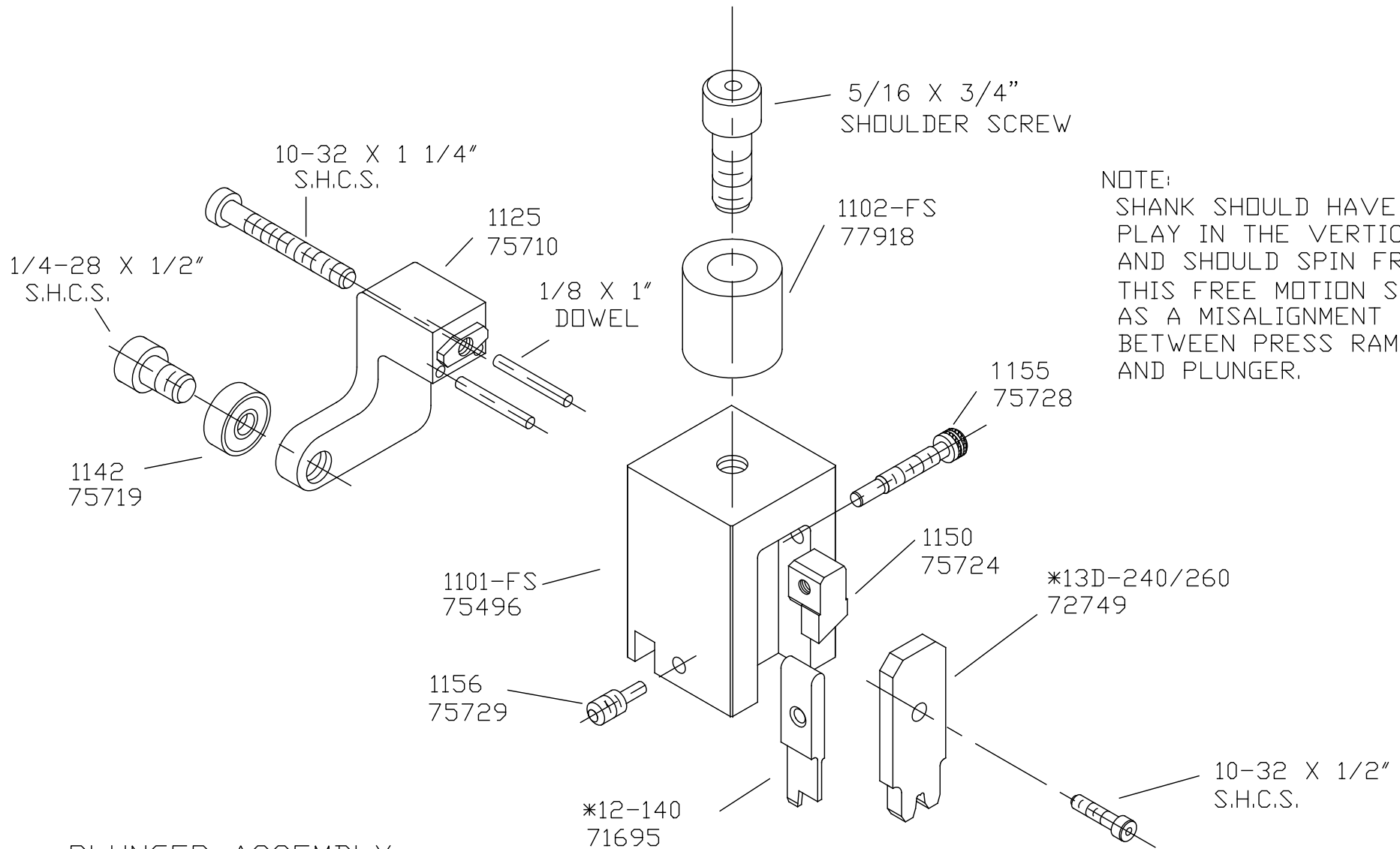


CASTING ASSEMBLY
 SIDE FEED
 S210

CHUTE AND GUARD S210



NEVER OPERATE APPLICATOR WITHOUT
SAFETY GUARD IN POSITION.



NOTE:
 SHANK SHOULD HAVE FREE
 PLAY IN THE VERTICAL AXIS
 AND SHOULD SPIN FREELY.
 THIS FREE MOTION SERVES
 AS A MISALIGNMENT COUPLING
 BETWEEN PRESS RAM
 AND PLUNGER.

PLUNGER ASSEMBLY
 SIDE FEED
 S210