

ITEM NO.	QTY.	Part_Code	PART NUMBER	DESCRIPTION	ITEM NO.	QTY.	Part_Code	PART NUMBER	DESCRIPTION
1	1	75326	8-3013	Rear Cut-off Die	70	2	63164	8-32_.50sh	#8-32 x 1/2" Socket Hd Cap Screw
2	1	75327	8A-3013	Front Cut-off Die	71	2		8-32_.50bh	#8-32 x 1/2" Button Hd Cap Screw
3	1	75554	9-3016	Wire Anvil	72	4	63949	8-32_.88sh	#8-32 x 7/8" Socket Hd Cap Screw
4	1	75555	9A-3016	Insulation Anvil	73	2	63213	8-32_1.00sh	#8-32 x 1" Socket Hd Cap Screw
5	1	75329	12-3013	Cut-off Punch	74	4	63158	3.16_.50dp	Ø3/16" x 1/2" Dowel Pin
6	1	75557	13-3016	Wire Rolling Tool	75	1	63194	3.16_10-32_.50 shs	3/16" x 1/2" x 10-32 Shoulder Screw
7	1	75556	14-3016	Insulation Rolling Tool	76	4	63470	3.16_.75dp	Ø3/16" x 3/4" Dowel Pin
8	1	100124	14-3016-1	Insulation Overlap Rolling Tool	77	1	63473	10-32_.25sh	#10-32 x 1/4" Socket Hd Cap Screw
9	1	78855	26-3016-1	Hold Down	78	3	63054	10-32_.25ss	#10-32 x 1/4" Socket Hd Set Screw
10	1	71465	34-3016-1	Wire Crimp Dial	79	2	78993	10-32_.38bh	#10-32 x 3/8" Button Hd Cap Screw
11	1	75505	152S-3001	IRT Spacer	80	4	71626	10-32_.38ss	#10-32 x 3/8" Socket Hd Set Screw
12	1	75285	199-3001	Guard	81	8	76501	10-32_.50bh	#10-32 x 1/2" Button Hd Cap Screw
13	1	75507	200-3013	Baseplate	82	1	70293	10-32_.63sh	#10-32 x 5/8" Socket Hd Cap Screw
14	1	75550	303-3016	Feed Finger	83	2	70925	10-32_.88sh	#10-32 x 7/8" Socket Hd Cap Screw
15	1	75553	403-3016	Brake Shoe	84	2	63155	10-32_1.00sh	#10-32 x 1" Socket Hd Cap Screw
16	1	75287	1600-3011	Stripper	85	2	63826	10-32_1.50sh	#10-32 x 1 1/2" Socket Hd Cap Screw
17	2	74491	GS-375	Guard Spacer	86	3	63632	1.4-20_.50bh	1/4-20 x 1/2" Button Hd Cap Screw
18	1	74343	MX3	Ram	87	2	64215	1.4_.75dp	1/4" x 3/4" Dowel Pin
19	1	74346	MX6	Gear Arm	88	1	63055	5.16-18_1.00bh	5/16-18 x 1" Button Hd Cap Screw
20	1	74347	MX7	Cam Pin					
21	1	74350	MX8	Cam Roller					
22	2	74352	MX11	Gib					
23	1	74356	MX12	Feed Finger Pivot Pin					
24	1	74360	MX13	Adjusting Bar					
25	1	74364	MX16	Retainer					
26	1	74376	MX25	Stroke Adjustment Screw					
27	1	74407	MX33	Mounting Post					
28	1	74409	MX35	Insulation Dial					
29	1	74411	MX36	Dial Spacer					
30	1	74412	MX44	Locating Dowel					
31	1	74418	MX49	Tool Retainer					
32	3	74419	MX50	Safety Pivot Pin					
33	2	74420	MX52	Pivot Pin					
34	1	74908	MX54-R	Slide Support					
35	1	74816	MX55-R	Feed Plate					
36	1	74817	MX56-R	Left Guide Rail					
37	1	74818	MX57-R	Right Guide Rail					
38	1	74909	MX58-R	Frame					
39	1	74912	MX69-R	Upper Rack Pad					
40	1	74913	MX70-R	Lower Rack Pad					
41	1	74914	MX71-R	Cam Rack					
42	1	72285	MX72-R-1	Swing Arm					
43	1	72287	MX73-R-1	Feed Arm					
44	1	74915	MX75-R	Cam, 1 5/8" Downstroke					
45	1	72596	MX80-1-R	Feed Finger Spring					
46	1	74521	MX89-R	Cam, 1 1/8" Upstroke					
47	1	74820	MX91-R	Lifter Plate					
48	2	74821	MX92-R	Brake Support					
49	2	74822	MX93-R	Lifter					
50	1	74823	MX94-R	Brake Shaft					
51	1	74825	MX96-R	Brake Handle					
52	2	74827	MX97-R	Retaining Ring					
53	1	72286	MX99-R-1	Spacer					
54	1	74917	MX100-R	Spring Bracket					
55	1	76682	MX101-R	Cam, 1 5/8" Upstroke					
56	1	72204	MX102-R	Cam (K Press Down Stroke)					
57	1	72310	MX104	Wave Disc Spring					
58	2	75083	Irving 3100-18	External Retaining Ring					
59	2	75342	LC-045E-6-M	Brake Spring					
60	1	74611	LE-037CD-6	Extension Spring					
61	2	70739	McMaster-Carr #3126A53	Spring Plunger					
62	2	73785	SPI 99-602-5	#10 Black Knurled Knob					
63	1	62294	1.16_.75rp	1/16" x 3/4" Roll Pin					
64	1	62040	1.8_1.00rp	1/8" x 1" Roll Pin					
65	2	63207	6-32_.25sh	#6-32 x 1/4" Socket Hd Cap Screw					
66	1	63212	8-32_.25bh	#8-32 x 1/4" Button Hd Cap Screw					
67	2	61472	8-32_.38bh	#8-32 x 3/8" Button Hd Cap Screw					
68	2	63508	8-32_.38fh	#8-32 x 3/8" Flat Hd Cap Screw					
69	2	63161	8-32_.38sh	#8-32 x 3/8" Socket Hd Cap Screw					

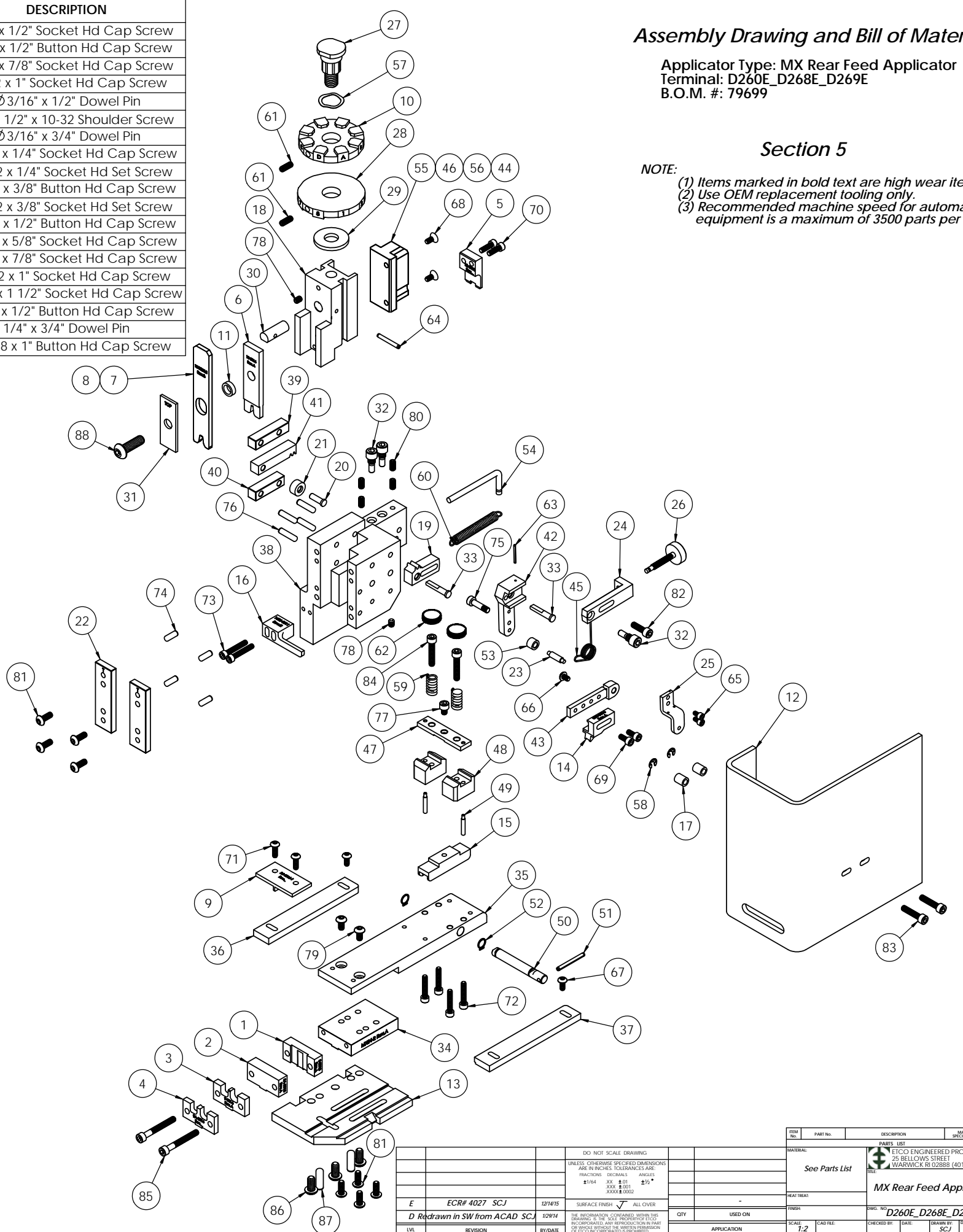
NOTE: ITEMS MARKED IN BOLD TEXT ARE HIGH WEAR ITEMS

Assembly Drawing and Bill of Materials

Applicator Type: MX Rear Feed Applicator
Terminal: D260E_D268E_D269E
B.O.M. #: 79699

Section 5

- NOTE:**
- (1) Items marked in bold text are high wear items.
 - (2) Use OEM replacement tooling only.
 - (3) Recommended machine speed for automatic equipment is a maximum of 3500 parts per hour.



REV	DESCRIPTION	DATE	BY	CHKD	APP
E	ECR# 4027 SCJ	12/14/15	SCJ		
D	Redrawn in SW from ACAD SCJ	12/14/15	SCJ		
C					
B					
A					

DO NOT SCALE DRAWING		UNLESS OTHERWISE SPECIFIED DIMENSIONS ARE IN INCHES. TOLERANCES ARE:	
FRACTIONS	DECIMALS	ANGLES	
±.004	±.01	±.5°	
	±.001	±.01°	
	±.0005	±.005°	
SURFACE FINISH: ALL OVER			
REVISIONS: THIS DRAWING IS THE "AS BUILT" DRAWING. ALL REVISIONS MUST BE INCORPORATED. ANY SPECIFICATIONS IN PARENTHESIS OR IN SMALL LETTERS TAKE PRECEDENCE OVER THE DIMENSIONS.			
DATE	SCALE	APP	REV
1/28/14	1:2		E

PARTS LIST		ETICO ENGINEERED PRODUCTS 25 BELLOWS STREET WARWICK, RI 02888 (401)-467-2400	
See Parts List		MX Rear Feed Applicator	
DATE	SCALE	APP	REV
1/28/14	1:2		E