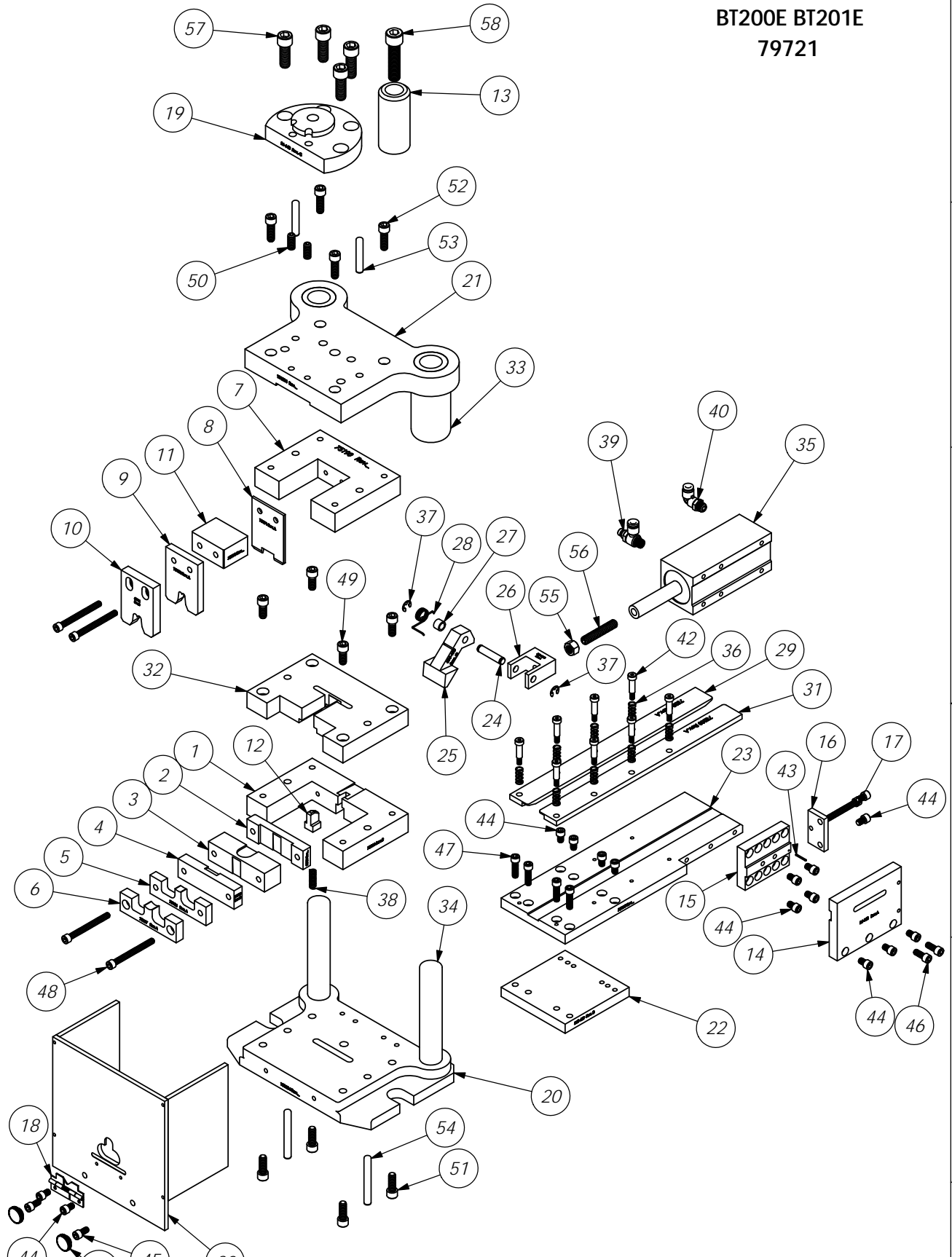


ITEM NO.	Part_Code	PART NUMBER	DESCRIPTION	QTY.
1	75183	8-345	Die Holder	1
2	75184	8-346	Rear Cut-Off Die	1
3	75185	8-347	Front Cut-off Die	1
4	75520	8-347-1	Cut-off Die Spacer	1
5	75186	9-323	Conductor Anvil	1
6	75187	9-324	Insulation Anvil	1
7	75190	11-239	Punch Holder	1
8	75191	12-272	Cut-off Punch	1
9	75193	13-305	Wire Rolling Tool	1
10	69944	14-083	Insulation Rolling Tool	1
11	75192	16-091	Spacer	1
12	75517	25-002	Lifter	1
13	100162	26-R553E	Shank	1
14	75197	26-168	Air Cylinder Support	1
15	62007	26-169-1	Air Cylinder Adjustment Plate	1
16	75199	26-170	Feed Adjust Plate	1
17	69947	26-171	Feed Adjusting Screw	1
18	75933	26-201	Wire Guide	1
19	62346	26-648	Adapter	1
20	100204	30-BT200E	Die Set Base	1
21	100203	31-BT200E	Die Set Hat	1
22	75196	250-409	Feed Support	1
23	75195	250-408	Feed Plate	1
24	75210	301-10	Feed Pivot Pin	1
25	75206	303-133	Feed Finger	1
26	69968	303A-133	Feed Finger Clevis	1
27	75209	304-310-1	Feed Finger Spacer	1
28	75211	307-80	Feed Finger Spring	1
29	75204	500-412	Guide Rail	1
30	75523	199-39	Guard	1
31	75203	1000-282	Guide Rail	1
32	75188	1600-297	Stripper	1
33	100167	Dieco BSH-MB8	Dieco Shoulder Bushing or equiv.	2
34	100164	Dieco TN100XP	Dieco Guide Pin or equiv	2
35	100205	35-BT200E	Feed Cylinder	1
36	77322	LC-045E-10-M	Spring	8
37	63484	Irving 3100-31	Retaining Ring	2
38	75518	LC-045D-10M	Spring	1
39	76268	Pisco JSC250-N1AU	Speed Controller	1
40	72352	Pisco PL250-N1U	Ø1/4" x 1/8-NPT Elbow Fitting	1
41	63916	SPI 98-703-B	1/4" Black Knurled Knob	2
42		10-24_1.00sh	#10-24 x 1" Socket Head Shoulder Screw	8
43	63486	1.16_.63rp	1/16" x 5/8" Roll Pin	1
44	71481	1.4-20_.38sh	1/4-20 x 3/8" Socket Hd Cap Screw	15
45	78328	1.4-20_.50sh	1/4-20 x 1/2" Socket Hd Cap Screw	2
46	63492	1.4-20_.63sh	1/4-20 x 5/8" Socket Hd Cap Screw	2
47		1.4-20_.88sh	1/4-20 x 7/8" Socket Hd Cap Screw	4
48	63496	1.4-20_2.50sh	1/4-20 x 2 1/2" Socket Hd Cap Screw	4
49		5.16-18_.75sh	5/16-18 x 3/4" Socket Hd Cap Screw	4
50	100206	5.16-18_.75ssf	5/16-18 x 3/4" Socket Hd Set Screw	2
51		5.16-18_.88sh	5/16-18 x 7/8" Socket Hd Cap Screw	4
52	63495	5.16-18_1.00sh	5/16-18 x 1" Socket Hd Cap Screw	4
53	63493	5.16_1.75dp	5/16" x 1 3/4" Dowel Pin	2
54		5.16_2.50dp	5/16" x 2 1/2" Dowel Pin	2
55	63485	3.8-24hn	3/8-24 Hex Nut	1
56	63490	3.8-24_2.00ssf	3/8-24 x 2" Soc Set Screw	1
57		7.16-14_1.25sh	7/16-14 x 1 1/4" Socket Hd Cap Screw	4
58		1.2-20_2.00sh	1/2-20 x 2.00 Socket Hd Cap Screw	1



**BT200E BT201E
79721**

ITEM NO.	PART No.	DESCRIPTION	MATERIAL SPECIFICATION	QTY	RECD
PARTS LIST					
MATERIAL: See Parts List					
ETCO ENGINEERED PRODUCTS 25 BELLOWS STREET WARWICK RI 02888 (401)-467-2400					
TITLE: BT200E, BT201E - DSA Rear Feed Applicator					
HEAT TREAT:					
FINISH:					
DWG. NO: BT200E BT201E					
SCALE: 1:4					
CAD FILE: CHECKED BY: DATE: DRAWN BY: SCJ DATE: 7/12/16					
LVL: REVISION BY/DATE APPLICATION					

DO NOT SCALE DRAWING
UNLESS OTHERWISE SPECIFIED DIMENSIONS ARE IN INCHES. TOLERANCES ARE:
FRACTIONS: DECIMALS: ANGLES:
±1/64 .XX ±.01 ±1/2°
XXX ±.001
XXXX ±.0002

SURFACE FINISH: ALL OVER

1 BT200E BT201E

QTY USED ON

THE INFORMATION CONTAINED WITHIN THIS DRAWING IS THE SOLE PROPERTY OF ETCO. INCORPORATED. ANY REPRODUCTION IN PART OR WHOLE WITHOUT THE WRITTEN PERMISSION OF ETCO INCORPORATED IS PROHIBITED.